

Parameters

Electrical Parameters	
Working Voltage	DC12-30V (From MPPI.48)
Buspro power consumption	45mA/DC24V
Card type	MIFARE ONE S50 13.56MHz
Environmental Conditions	
Working temperature	-5°C~45°C
Working relative humidity	Up to 90%
Storage temperature	-20°C~+60°C
Storage relative humidity	UP to 93%
Approved	
CE	
RoHS	
Product Information	
Dimensions	86×86×10.5 (mm)
Net weight	118.6g
Housing material	Glass
Installation	86*86 wall box
Protection rating	IP20

HDL Buspro Cable Guide

CAT5/CAT5E	HDL Buspro	HDL Buspro/KNX
Brown/ Orange	DC24V	Red
Brown white/ Orange white	COM	Black
Blue white/ Green white	DATA-	White
Blue/ Green	DATA+	Yellow

Safety Precautions



- The tightening torque should not exceed 0.2Nm.
- It must work in conjunction with HDL-MPPI.48.
- Installation position: The door.
- Do not make wrong connection on Buspro interface, it will damage the Buspro interface of this module.
- Do not get AC power into Bus wire , it will damage all devices in the system.
- Ensure good ventilation.
- Avoid contact with liquids and aggressive gas.

Overview



The **HDL-MPTB01RF.48** is the touch door bell, which is accompanying with the HDL control system. It is installed in the hotel room gate. It has door bell and unlock the door by RF card functions.

Functions

- Backlight RGB can be optional.
- Door bell for visitors.
- Cleaning service.
- Multi key mode: Combine on, Combine off, Combine on/off (they can control 1-99 targets); Separated combined mode, Dblclick/Combine switch, Mechanical switch (they can control 1~49 targets).
- The touch sensitivity can be adjusted.
- Supports to upgrade from HDL-Bus.

Important Notes

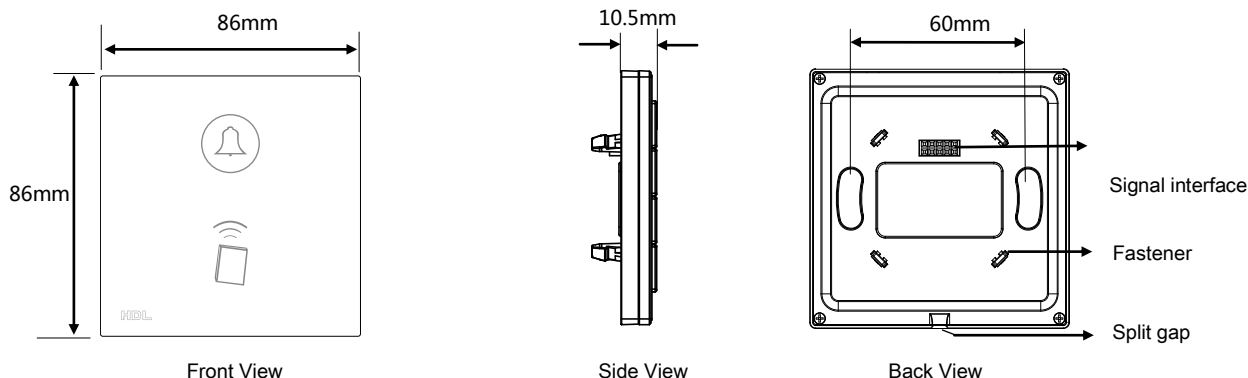
- Bus cable – CAT5E or HDL Bus/KNX cable.
- Bus connection - Series connection (hand-in-hand).
- **Real production may be different from pictures.**
- Touch performance - Touch panel sensitivity needs to be readjusted when it is finishing the installation.

Installation Steps

- 86*86 wall box.
- Connect Buspro cables. Make sure the color of wire complies with the definition.
- Make sure the Buspro cable type is correct and has no short circuit.
- Mount the HDL-MPPI.48 in the wall-box.
- Put this device into HDL-MPPI.48.
- Check the HDL-Bus connection, avoid any mistake.



Dimensions



Notes:

Door bell button: It can be used in door bell for visitors, and be also used in DND or cleaning. Different functions are distinguished from different colors.

The functions can be realized by other panels or other devices which can send the universal button.

DND: Universal button is number 1. When it is DND status, the doorbell cannot be controlled.

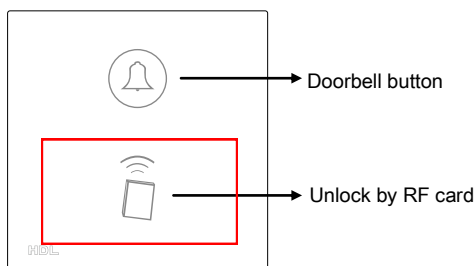
Cleaning: Universal button is number 2. When it is cleaning status, the doorbell can be controlled.

Doorbell: Universal button is number 5. When the status is on, the doorbell can be controlled.

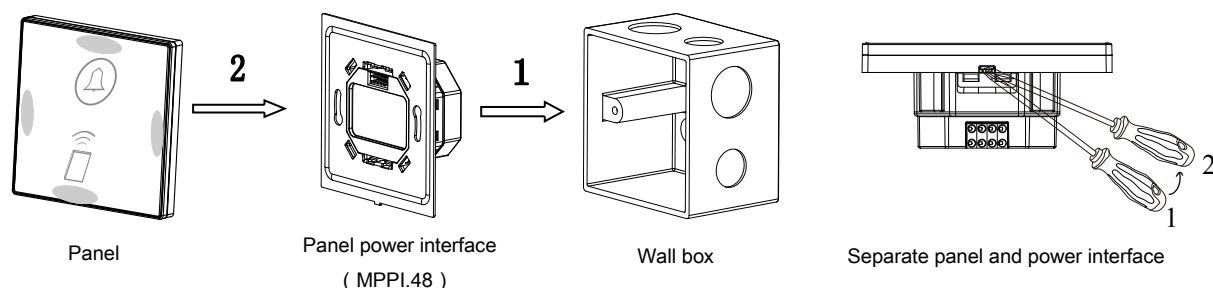
Unlock by RF card: Universal button is number 6. When the status is on, you can unlock by RF card.

Notes: DND/Cleaning/Doorbell uses the same button.

RF card: The new card must be assigned by the hotel guest room management software. There are 5 types of cards: guest card, service card, cleaner card, maintenance staff card and manager card. When you use different cards, you can control different targets.



Installation



Installation: Hold the edge of panel (shown as above), insert the power interface module vertically. Do not push the panel too hard.

Split: Insert 2.5mm-screwdriver to the split gap, pry up from position 1 to 2, and then the wiring hole will open. Then separate the panel and MPPI.48.

Glass plate replacement: Insert a small slotted screwdriver into the gap in the left side or right side of the glass cover (as above shows), to pick up the glass cover, then put the new cover in right place, then press the grey area to lock the cover.

Package Contents

Datasheet*1/Device*1