

## Parameters

### Electrical Parameters:

Power supply	DC24V
Communication interface	HDL Buspro

### Environmental Conditions:

Working temperature	-5°C~45°C
Working relative humidity	Up to 90%
Storage temperature	-20°C~+60°C
Storage relative humidity	Up to 93%

### Approved

CE

RoHS

### Product Information:

Dimensions	86×86×30.5 (mm)
Weight	96(g)
Housing material	Steel, ABS
Installation	EU wall box
Protection degree	IP20

## Installation Step

- Connect Buspro cables. Make sure the color of wire complies with the definition
- Make sure the Buspro cable type is correct and has no short circuit
- Mount the HDL-MPPI.48 in the wall-box
- Put other device into HDL-MPPI.48

## HDL Buspro Definition for Cable

CAT5/CAT5E	HDL Buspro	HDLBuspro/KNX
Brown/ Orange	DC24V	Red
Brown white/ Orange white	COM	Black
Blue white/Green white	DATA-	White
Blue/ Green	DATA+	Yellow

## Overview



**HDL-MPPI.48** Panel switch power docking base provides the DC power and communicates with the panel switch signal, it supports different new generation on wall mount switches and wall mount new sensors.

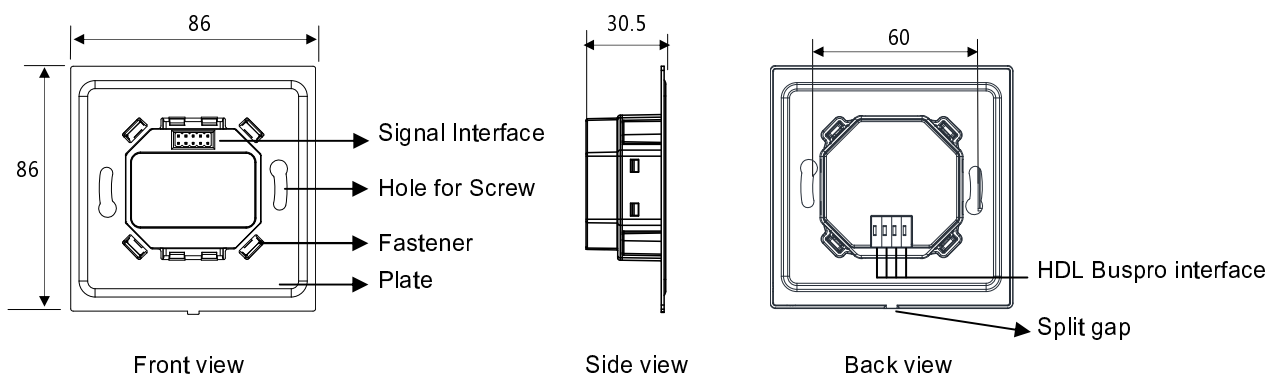
## Functions

- This docking base is the universal base for different switches.
- It has the HDL Buspro interface. It must work in conjunction with panel or sensor

## Important Notes

- Buspro cable — HDL Buspro/KNX cable, 0.8mm single core copper cable.
- Buspro Connection — Series connection (hand-in-hand).
- It must work in conjunction with panel and sensor.

## Dimensions and Wiring

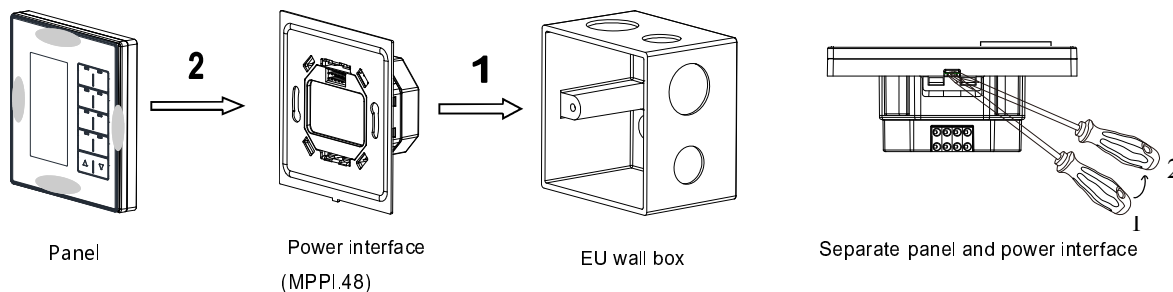


**Signal Interface and fastener:** To be connected with the panel switch or sensor.

**Hole for Screw:** Fix the docking base into the back box.

**Split gap:** Insert a slotted screwdriver to the split gap, separate the panel and power interface module (MPPI.48).

## Installation



**Installation:** Hold the edge of panel (shown as above), insert the power interface module (MPPI.48) vertically. Do not push the panel too hard.

**Split:** Insert a 2.5mm-screwdriver to the split gap, pry up from position 1 to 2, then the wiring hole will open. Then separate the panel and power interface module (MPPI.48).

## Safety precaution



- The screw down strength should not exceed 0.1Nm
- Do not make wrong connection on Buspro interface, it will damage the Buspro interface of this module
- Never let liquids get into the module, it will damage this device
- Do not get AC power into Bus wire, it will damage all devices in the system

## Packing List

- Datasheet\*1 / HDL - MPPI.48 \*1