



HDL-MWM65B.20

User Manual

Version: V1.0.0

Release Date: 2020/07/23

Content

1 Overview.....	1
1.1 Description	1
1.2 Functionalities.....	1
1.3 Device Description.....	2
2 Software Configurations	4
2.1 Device Information.....	4
2.2 Curtain Setting	4
3 Panel Control Curtain	7
4 Firmware Upgrade.....	8

Copyright Notice

Our company has all intellectual property rights to this document and its contents. Without the written authorization of the company, it is forbidden to copy or distribute to a third party. In case of infringement of intellectual property rights such as the company's copyright, the company will investigate its legal liability according to law.

Due to product version upgrade or other reasons, the contents of this document will be updated from time to time. Unless otherwise agreed, this document is only used as a guide, and all statements, information and suggestions in this document do not constitute any express or implied warranty.

GZ HDL Technology Co., L

Modification Record

This record accumulates instructions for each document update. The latest version of the document contains updates from all previous document versions。

Num	Version	Modification Content	Date
1	V1.0.0	First official release	2020/07/23

1 Overview

1.1 Description

HDL-MWM65B.20, it is the new curtain motor, it supports to be controlled open/close/stop and percentage.

It has two types:



220V AC version

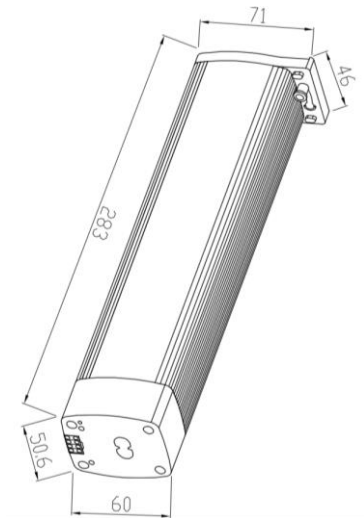


Adapter version

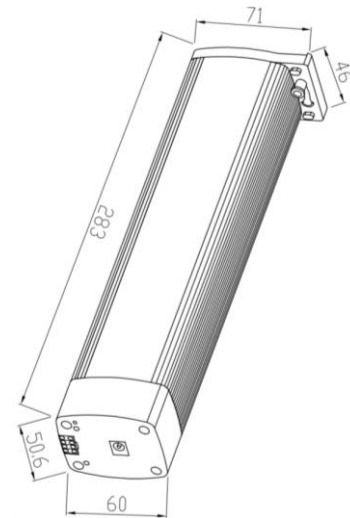
1.2 Functionalities

- Open (full or to certain extent), close or stop the curtain.
- Supports pulling the curtain to start the motor.
- Automatic ranging and switch limiting position configuration supported.
- Maximum curtain extension range display.
- HDL Buspro communication.
- Online upgrade supported.
- Power supply via DC motor, Adapter version.
- Applicable for all kinds of medium-size linear or arched curtain.

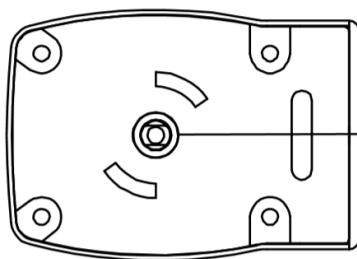
1.3 Device Description



220V AC version

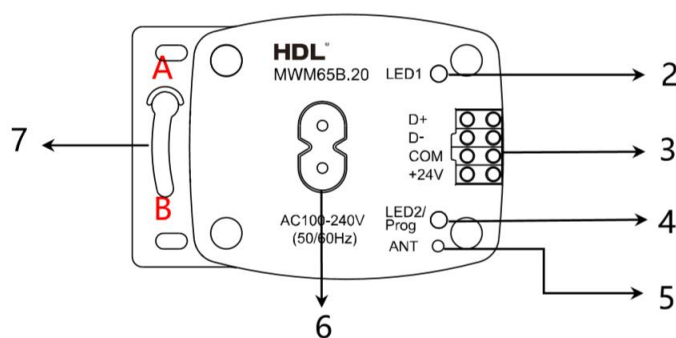


Adapter version



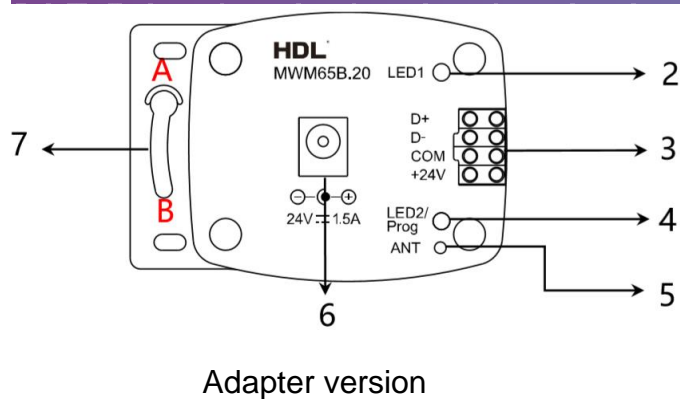
Bottom view

1: Motor shaft



220V AC version

- 2: LED1 indicator/Code Learning Button (Pls read the manual of remote controller about code learning).
- 3: Buspro interface.
- 4: LED2 indicator/PROG button.
- 5: Antenna (Reserved).
- 6: Power interface.
- 7: Clipping lock.



- 2: LED1 indicator/Code Learning Button (Pls read the manual of remote controller about code learning).
- 3: Buspro interface.
- 4: LED2 indicator/PROG button.
- 5: Antenna (Reserved).
- 6: Power interface.
- 7: Clipping lock.

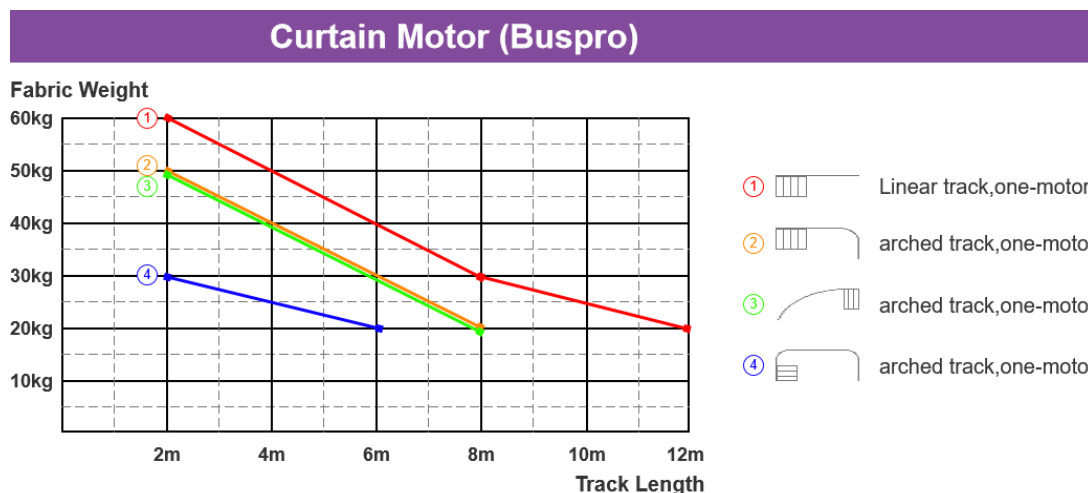
Installation:

- 1: Pull and turn the clipping lock (7) from A to B.
- 2: Put the motor shaft into the rail and turn the clipping lock from B to A to lock the motor.
- 3: Buspro interface need hand in hand to connect to Buspro Bus.
- 4: Ensure correct connection to HDL Buspro terminal.
- 5: Ensure tight connection between the motor and the rail.

Status Description of LED indicator:

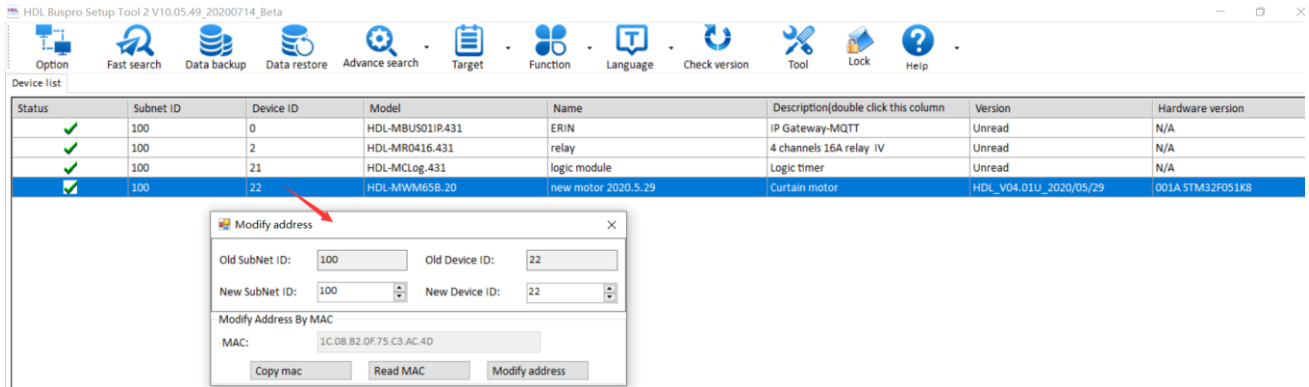
Function	Status	LED status	Way to enter the status	Way to exit the status
Working properly		LED Indicator 2 flashes once at the interval of 2s	/	/
Modify motor address		LED Indicator 2 keeps on in red	Press PROG Button for 3s	Press PROG Button for 3s / no operation for 9s

Fabric weight and Track length:



2 Software Configurations

2.1 Device Information



Double click Address: Read MAC and modify address. Subnet ID must same with gateway's subnet ID. Device ID must be unique.

Double click Model/Description: Enter to setup page.

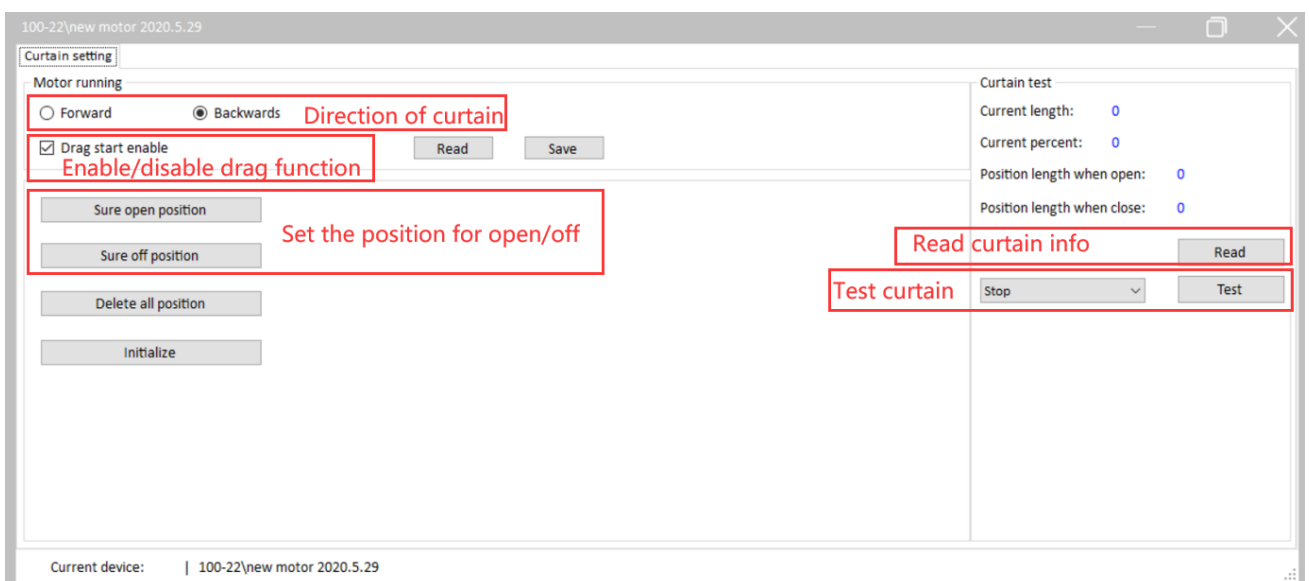
Double click Name: Modify remark of module.

Double click Version: Read firmware version of module.

Double click Hardware Version: Read hardware version of module.

2.2 Curtain Setting

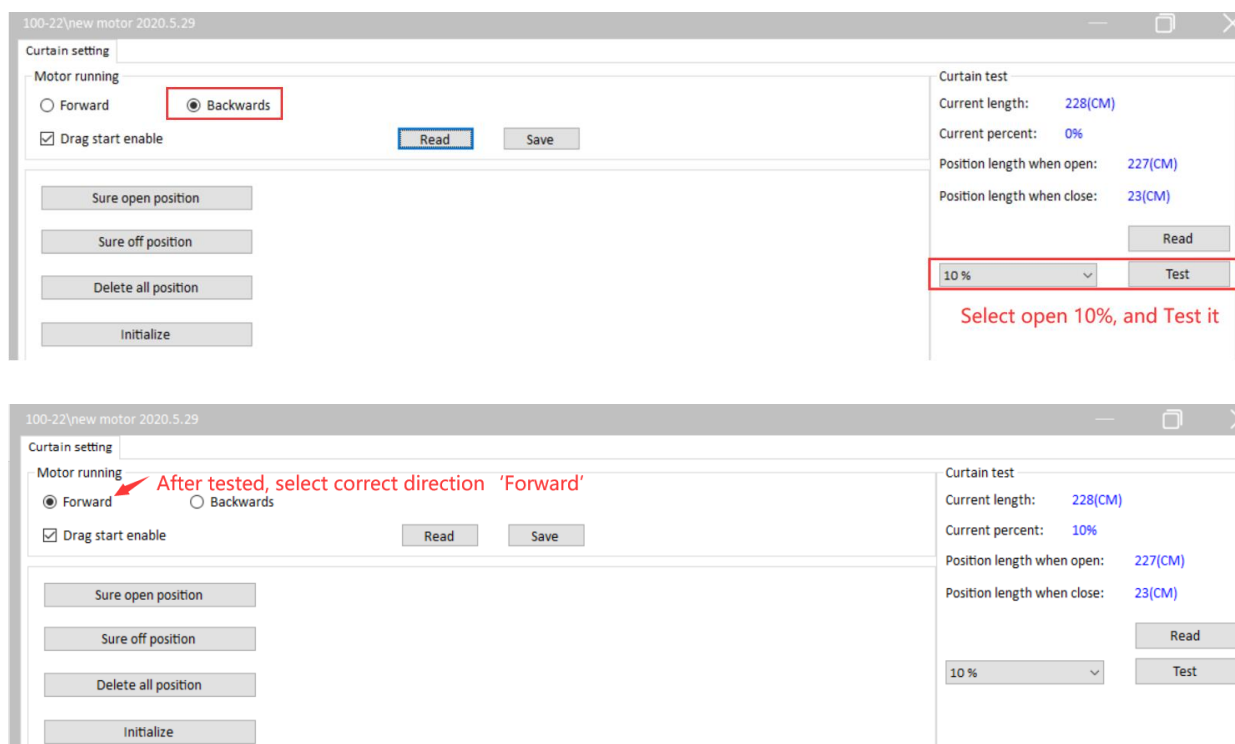
Double Model/Description, enter to setup page of curtain motor.



How to setup the curtain motor?

- 1) Check the direction of the curtain motor. If the direction is wrong, you can change other type in 'Motor running'.

For example, test open 10% in Backward, but the direction of curtain is wrong, so we can select 'Forward'.



- 2) Initialize curtain motor.

Two ways:

A) We can click 'Initialize' it in Curtain Setting page in Buspro2 Tool.

B) Long pressing LED1 for 3s, it will be red color and then release LED1. And long pressing LED1 again until the LED1 indicator turns off.

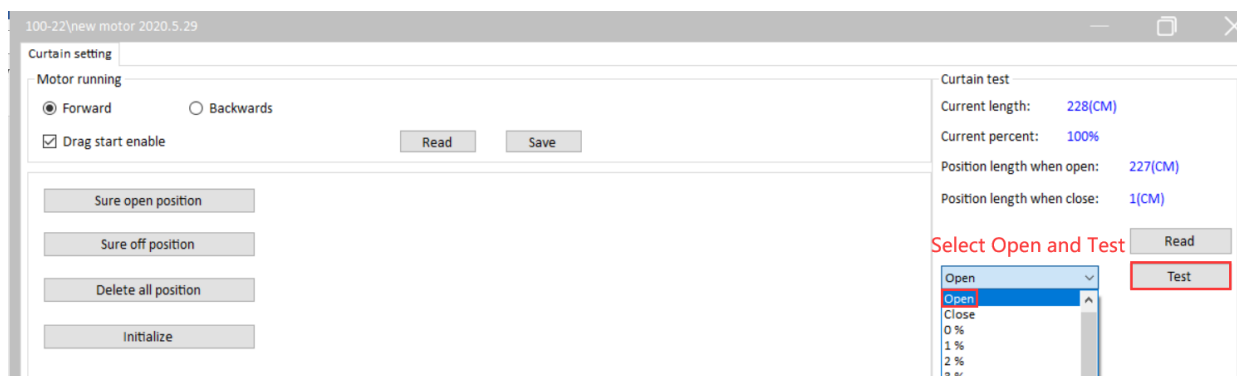
- 3) Set the distance for curtain.

Notice: Make sure install the curtain fabric before you set the curtain distance.

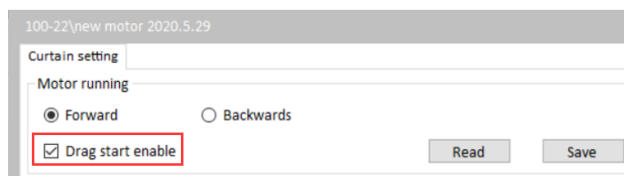
Two ways:

A) Set any one percentage or open or close and then Test the curtain motor in Buspro2 Tool.

For examples, select 'Open' and then click 'Test', the curtain will fully close and then fully open. Done.



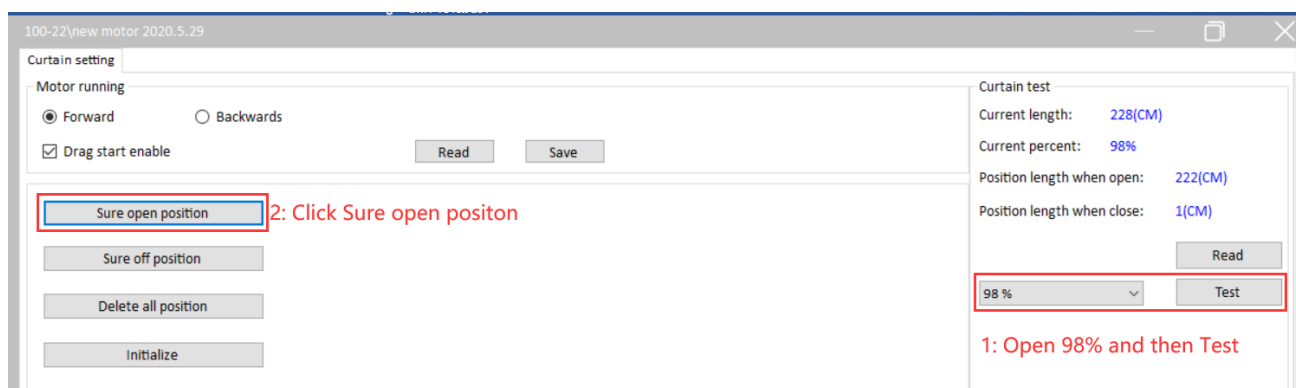
B) Drag the curtain fabric directly, the curtain will fully close and then fully open. Done.
But pls make sure you enable the Drag function in Buspro2 Tool first.



4) Set the Open Position.

Because the curtain fabric takes up some distance, when control curtain fully open after Step3, if the curtain fabric bounces a little after the curtain has fully opened, we need to set the Open position.

For example, control open 98% and set it as Option Position. To avoid curtain fabric bounces.



3 Panel Control Curtain

We can use panel to control the curtain motor. For normal, one button just can control Open/Stop and Close/Stop, can not control Open/Stop.

Examples:

1- One button in MPTL14.46 control curtain Open/Stop.

✓	100	21	HDL-MCLog.431	logic module	Logic timer	Unread
✓	100	22	HDL-MWM65B.20	new motor 2020.5.29	Curtain motor	Unread
✓	100	50	HDL-MPTL14.46-A		DLP panel with AC music clock floor he...	Unread

2- One button in MPTL14.46 control curtain Close/Stop.

✓	100	21	HDL-MCLog.431	logic module	Logic timer	Unread
✓	100	22	HDL-MWM65B.20	new motor 2020.5.29	Curtain motor	Unread
✓	100	50	HDL-MPTL14.46-A		DLP panel with AC music clock floor he...	Unread

3- One button in MPTL14.46 control curtain Open 60%.

✓	100	21	HDL-MCLog.431	logic module	Logic timer	Unread
✓	100	22	HDL-MWM65B.20	new motor 2020.5.29	Curtain motor	Unread
✓	100	50	HDL-MPTL14.46-A		DLP panel with AC music clock floor he...	Unread

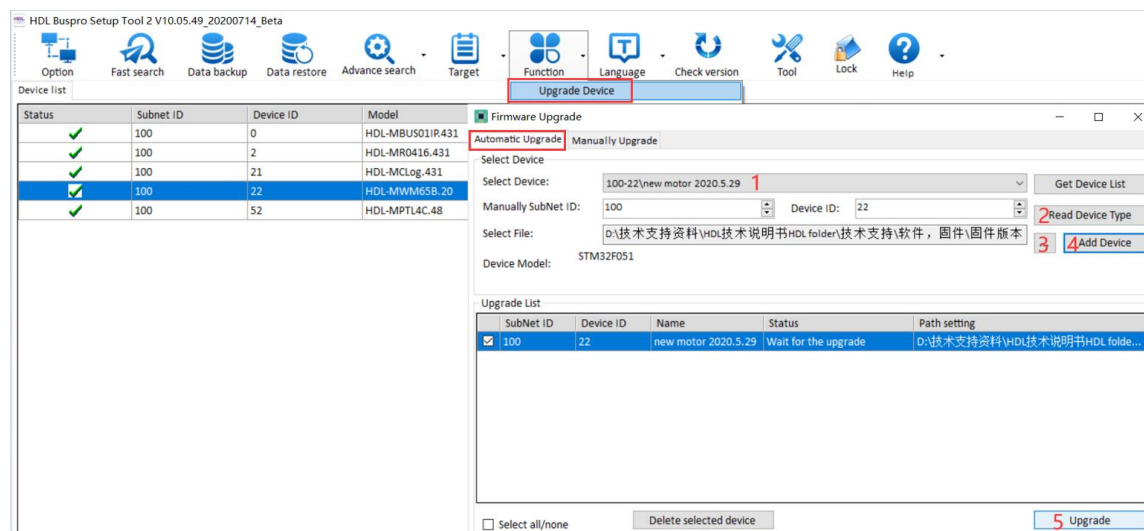
4- Granite panel curtain page control curtain motor.

✓	100	21	HDL-MCLog.431	logic module	Logic timer	Unread
✓	100	22	HDL-MWM65B.20	new motor 2020.5.29	Curtain motor	Unread
✓	100	52	HDL-MPTL4C.48	granite panel	Granite Display	Unread

4 Firmware Upgrade

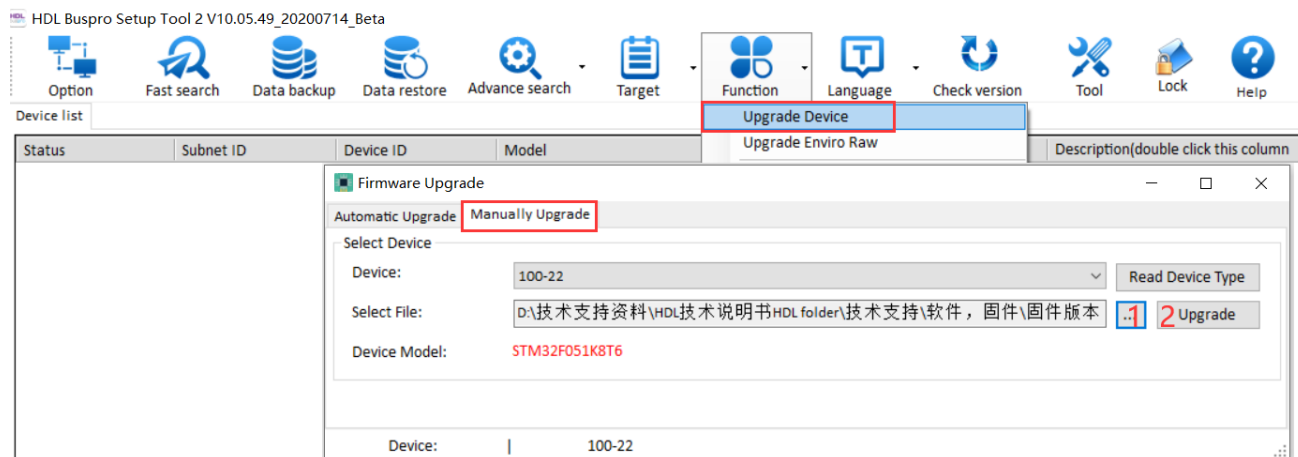
Curtain motor supports Automatic Upgrade and Manually Upgrade.

Automatic Upgrade: suitable for searched device.



- 1- Select device which need upgrade firmware.
- 2- Read Device Type.
- 3- Select upgrade firmware file for current device.
- 4- Add it to upgrade list
- 5- Upgrade.

Manually Upgrade: You can switch to Manually Upgrade page when upgrade failed, if shows device's address, then select the upgrade file again and upgrade it.



How to make device enter to manual upgrade mode?

- 1- Go to Manually Upgrade page in software.
- 2- Power off the curtain motor (Just power off the power, not need power off Buspro interface).
- 3- Long pressing the LED2 and then power on the curtain motor, when the LED2 flicker in red, release the LED2 button.
- 4- Go to manually upgrade page, Software will show its address in Manually Upgrade page, select upgrade file and upgrade it.



- 5- Done