

## Parameters

### Electrical Parameters:

Buspro power supply	DC18-30V
Buspro power consumption	30mA/DC24V
IR transmit frequency	38kHz
Detection diameter	Φ8m (Installation height:3m)
IR emission distance	4m
Illumination detection range	0~500Lux

### Environmental Conditions:

Working temperature	-5°C~+45°C
Working relative humidity	Up to 90%
Storage temperature	-20°C~+60°C
Storage relative humidity	Up to 93%

### Approved:

CE

RoHS

### Product Information:

Dimensions	84mm ( diameter ) ×37.5mm
Net weight	55.4g
Housing material	ABS
Installation	Ceiling mount
Protection rating	IP20

## HDL Buspro Cable Guide

CAT5/CAT5E	HDL Buspro	HDL Buspro/KNX
Brown/Orange	DC24V	Red
Brown white/Orange white	COM	Black
Blue white/Green white	DATA-	White
Blue/Green	DATA+	Yellow

## Important Notes

- **Installation** – Indoor, keep it away from AC outlet and heat source
- **Buspro cable** - HDL Buspro/KNX cable
- **Buspro connection** - Series connection (hand-in-hand)
- **Installation** – Ceiling mount

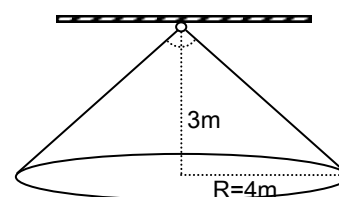
## Overview



HDL-MSP08M.4C 8 in 1 sensor includes PIR motion sensor, LUX sensor, dry contact, etc. It can satisfy different requirements according to different logics. It supports HDL security mode. It can load IR code from HDL Buspro Setup Tool and send the IR code to control the target

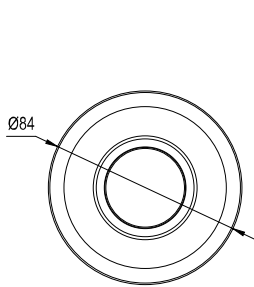
## Functions

- Built-in PIR sensor, LUX sensor, dry contact.
- Logic inputs include LUX sensor, PIR sensor, two dry contact inputs, external conditions.
- Two logic relations: OR, AND.
- Adjustable infrared motion sensitivity, range is 1-10.
- It has 20 logic blocks. The range of universal switch number in logic is 201-240, each logic has 2 universal switch numbers. The universal switch has Auto-Off function, delay time is 1-3600s.
- Both true logic and false logic can trigger the targets respectively. Up to 10 logic blocks to trigger the control target.
- Up to 240 IR sending control targets, the universal switch number is 1-240.It can upload multiple IR codes.
- Support online upgrade from HDL Buspro.
- Constant LUX function.

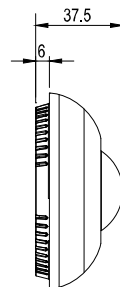


Motion detect range

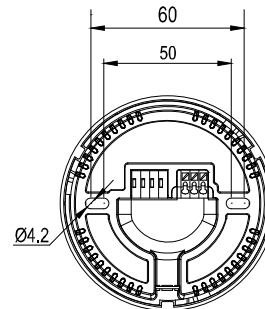
## Dimensions and Wiring



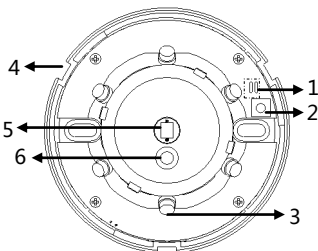
Front View



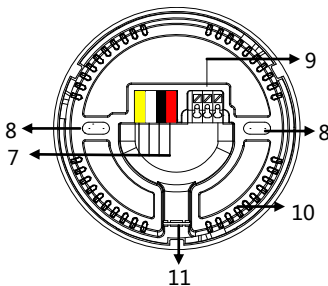
Side View



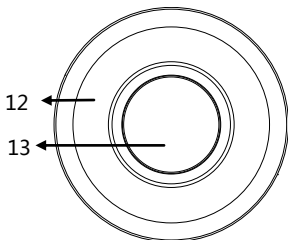
Back View



Inside View



11



Cover

1. LED indicator and IR indicator

when the module is working properly, it will turn blue. And it will turn red when it detects the motion

Notes: Indicators can be set from HDL Buspro Setup tool

2. Module address setting

Keep pressing it for 3s, it will turn blue, go to "Address management"-"Address modification" of HDL Buspro Setup tool to change the address.

3. IR emitter

4. Slot

5. PIR sensor

6. LUX sensor

7. HDL Buspro, from right to left: DC24V, COM, DATA -, DATA+

8. Screw holes

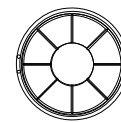
9. Dry contact 1, dry contact 2

10. Ventilation holes

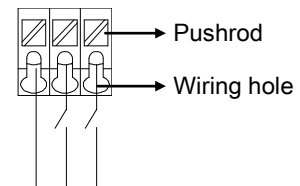
11. Remove it for wires

12. Emitter window

13. Fresnel lens



Parts: Angle cover, you can remove some of them according to the installation, to enlarge or narrow down detection zone.



Dry contact 1,2

**Dry contact cable requirement:**

Wire: 0.5~0.75mm<sup>2</sup>

Length : 8.5~10mm

Suggests to use the shield cable, the length should not exceed 20m

**Dry contact connection:**

Use the screwdriver or others to press the pushrod, the wiring hole will open

The wires are put in the wiring hole, and then loosen the pushrod, the wires will be locked.

You need to open the cover, and then fix by screws. Finally, put on the cover.



## Safe Precautions

- The screw down strength should not exceed 0.1Nm.
- Do not make wrong connection on Buspro interface, it will damage the Buspro interface of this module.
- Do not get AC power into Buspro wire , it will damage all devices in the system.
- Avoid contact with liquids and corrosive gases.

## Package Contents

- Datasheet \*1 / HDL-MSP08M.4C \*1/ Bus terminal \*1 / Warranty card\*1

