

HDL-MS06.432 User Manual

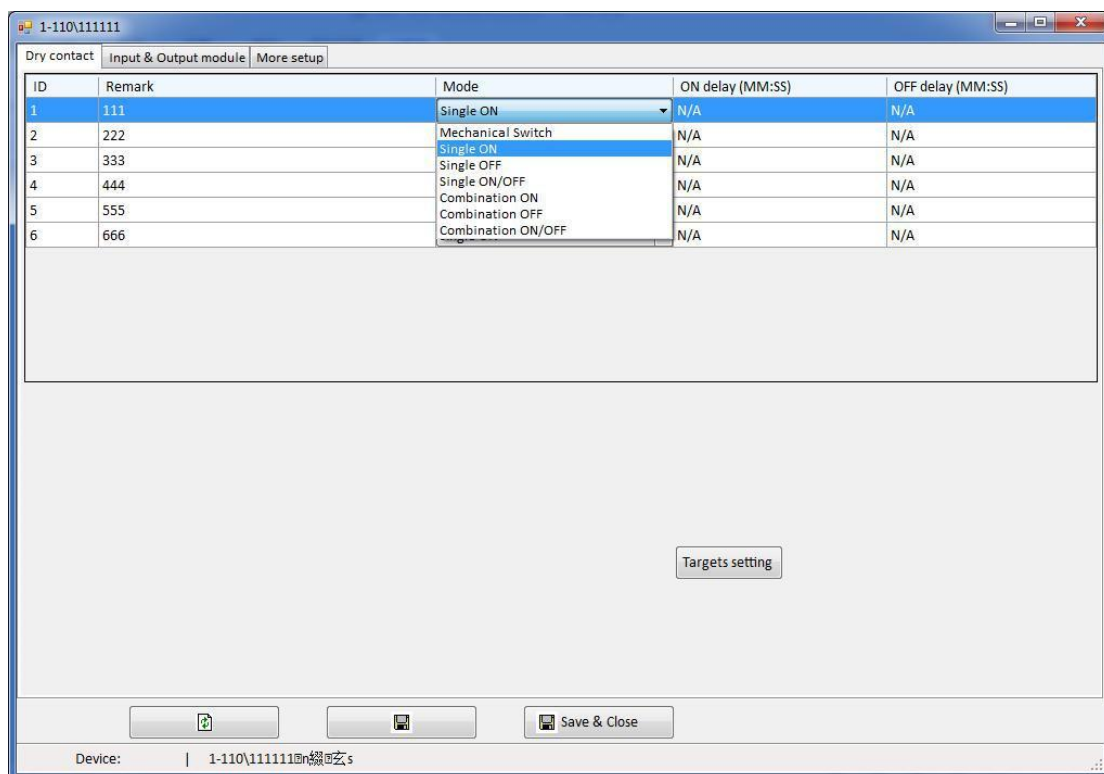
05-2018

Content by HDL Automation China,
Format by HDL Automation CZ

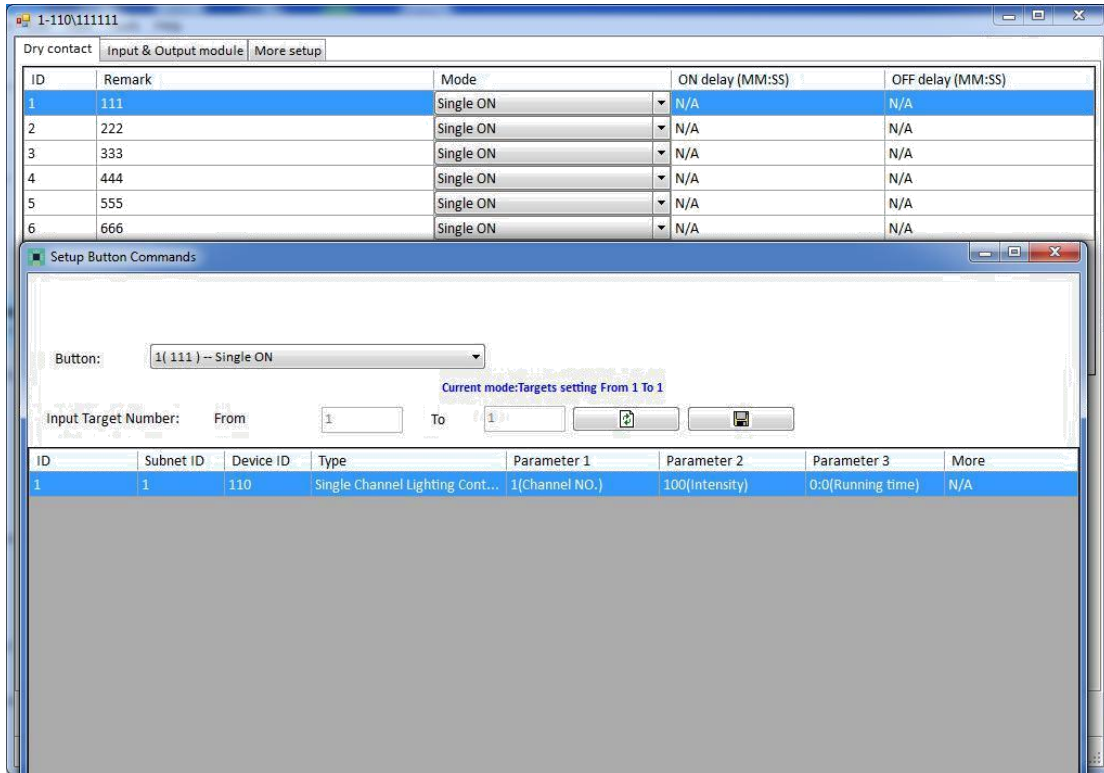
6 channel input and output module could choose the input type as dry contact, Voltage (0~10000mV), Analogy Voltage (0~10000mV), Electricity (4000~20000 μ A), Analogy Electricity(4000~20000 μ A).

1. Dry contact

When you choose the type as dry contact type, you could match the mode as mechanical Switch, single on, single off ect. For the other types the mode you do not need to match.



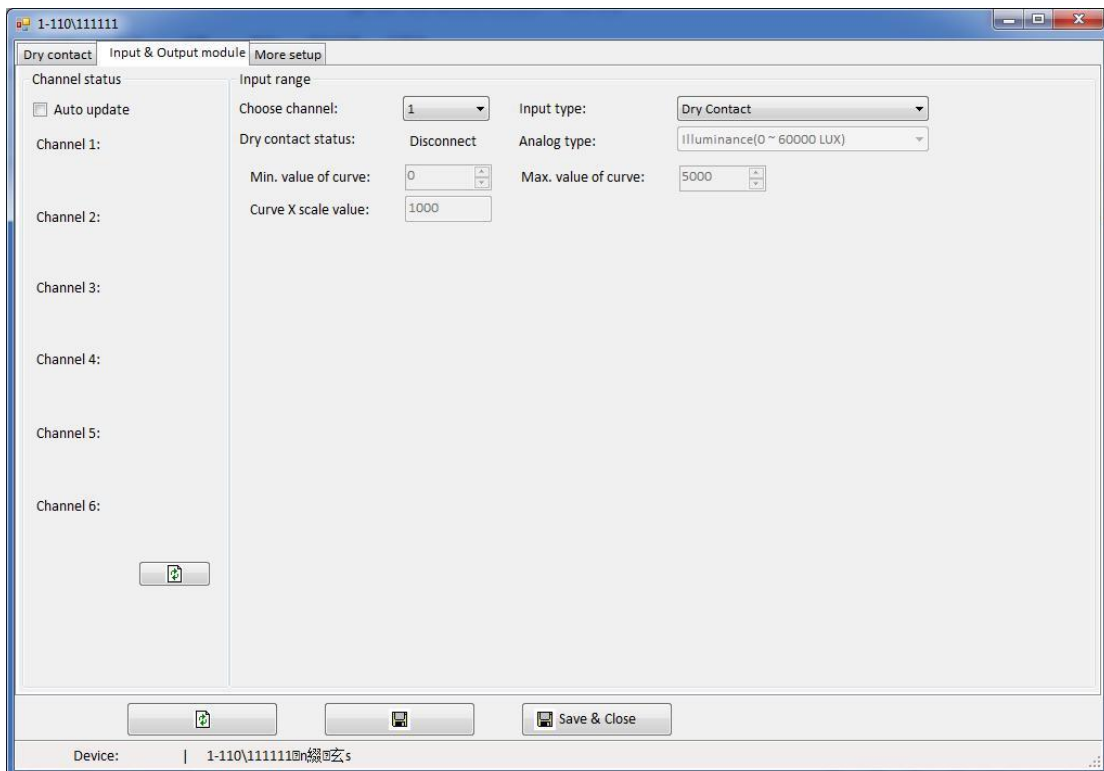
Click the **Targets setting** you could set the channel output targets in here. This **targets setting** is used for all types (dry contact, Voltage(0~10000mV), Analogy Voltage(0~10000mV), Electricity(4000~20000 μ A), Analogy Electricity(4000~20000 μ A)).



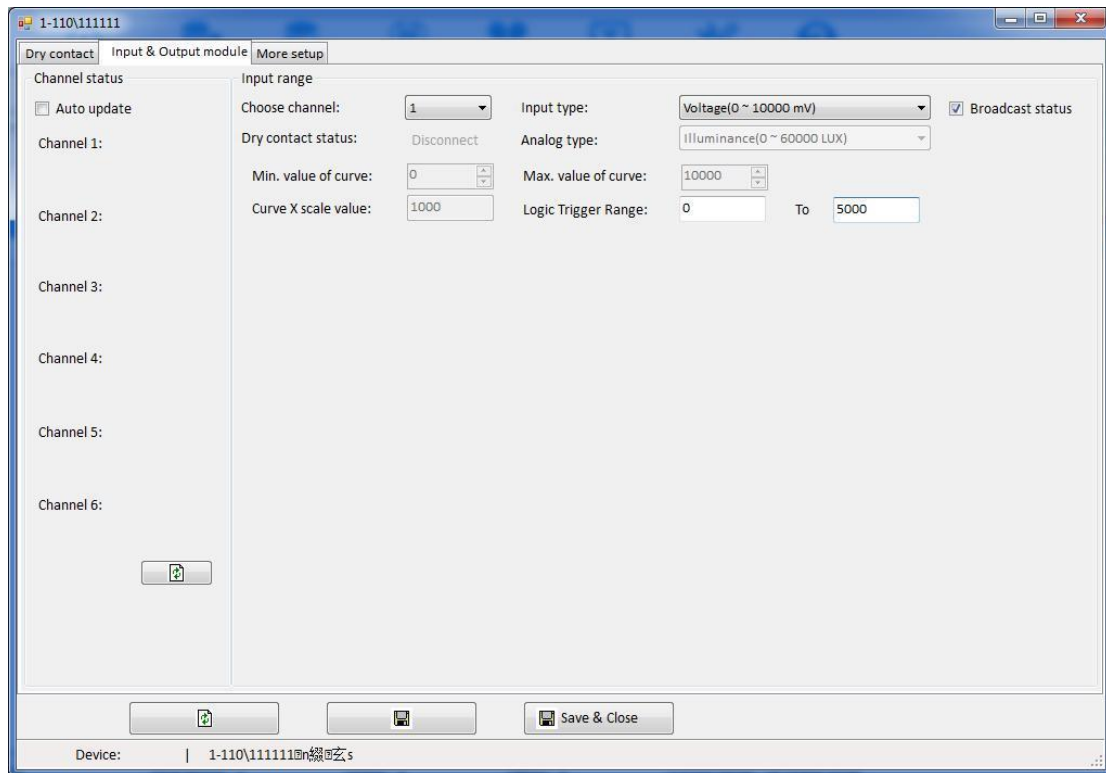
2. Input and output module

In this interface you could choose 6 channel input type as dry contact, Voltage(0~10000mV), Analogy Voltage(0~10000mV), Electricity(4000~20000μA), Analogy Electricity(4000~20000μA).

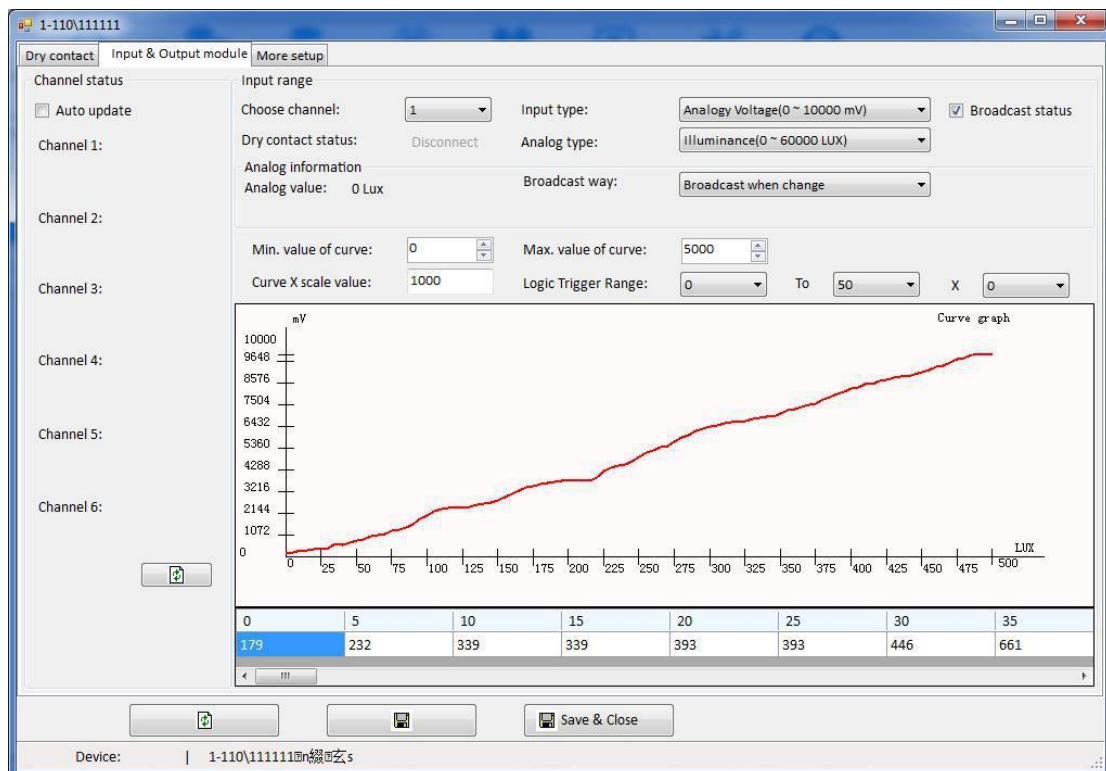
When choose as dry contact you do not need do the other configuration in this interface.



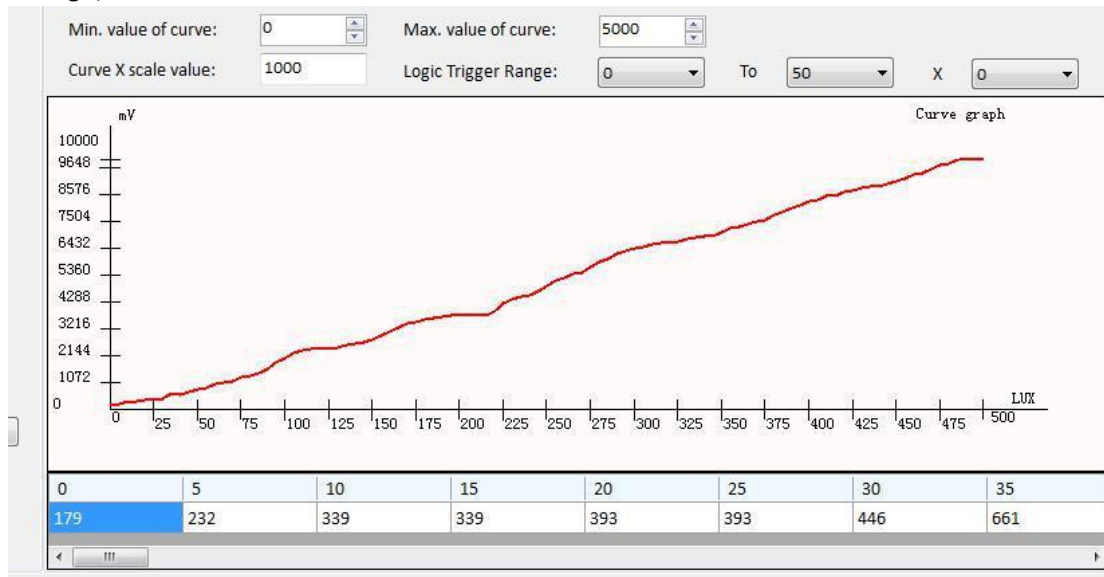
When choose as Voltage, Eg: channel1, input type as Voltage and the logic trigger range 0-5000mV. This means when device voltage is in the range 0-5000mV channel1's output targets will be triggered.



Analogy Voltage is analog the voltage as Temperature, Lux, humidity and pressure. All of these parameters need be positively related. (One parameter increases the other needs increase too)



Eg: Channel 1, Analogy type is illuminance and input type is Analogy Voltage. Please choose an illuminance sensor and output as voltage connect to the system. In below chart Y is Voltage, X is illuminance.



Minimum curve: The minimum illuminance

Maximum curve: The maximum illuminance

Curve X scale value: The number sets (voltage and illuminance)of values in below chart. Like 1000 means you could fill in 1000 sets of number.

Logic trigger range: The above chart shows that zero percent to fifty percent of the maximum of the curve can trigger the target.

X: When the X is too big needs segment display. You could choose the corresponding segment.

When choose electricity and analogy electricity are the similar as the Voltage and the analogy Voltage.

3. more setup

1-6 channels are relay output and 7-8 channels are current and voltage output. You could use single lighting channel control to control the 1-8 output channels.

Output voltage range is 0-10V corresponding to 0-100 value of single lighting channel control. Like control 5V voltage output use 50 value of single lighting channel control.

Output current range is 4000-20000 μ A corresponding to 0-100 value of single lighting channel control. Like control 12000 μ A current output use 50 value of single lighting channel control.

