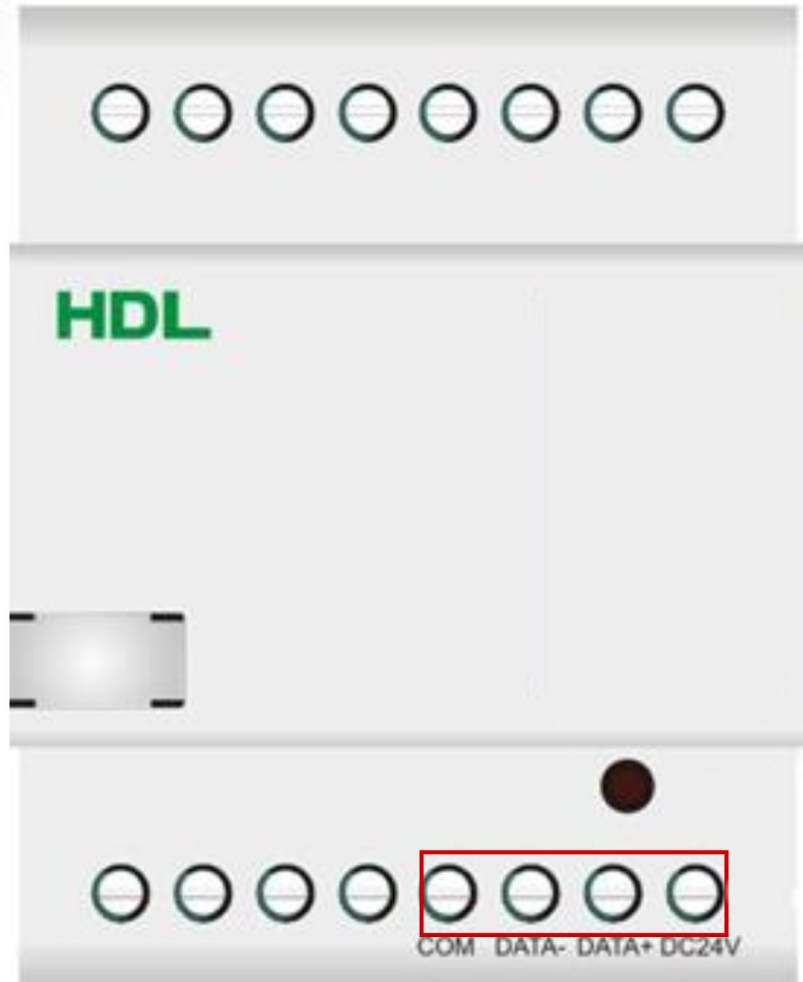


HDL-BUS/RS232 Converter

Manual describes the snapshots taken in the previous version of the module and using older HBST program. In HBST2, the graphic appearance is slightly different but the functions remain the same



专业舞台灯光
Professional stage lighting



智能照明
Intelligent Lighting



智能酒店
Smart Hotel



智能家居
Smart Home



智能演出控制
ShowControl

HDL-BUS/RS232 Converter

The screenshot shows the 'RS232<->HDL-BUS data transfer' window. It is divided into several sections:

- Select device:** A dropdown menu showing '1-16-HDL-MRS232.231'.
- Configuration:** Includes 'Model' (HDL-MRS232.231), 'Subnet ID' (1), and 'Device ID' (16). A red box highlights these two fields with an arrow pointing to the text 'subnet ID and Device ID'.
- Remark:** A text field containing 'K 232<->485', circled in red, with an arrow pointing to the text 'Device remark'.
- RS232 serial port configuration:** A button labeled 'Config serial port...'
- RS232<->HDL BUS mode:** A dropdown menu with 'ASCII control and feedback' selected. A red box highlights this dropdown with an arrow pointing to the text 'HDL is adding more and more protocols in it, so it is possible that customers don't need to spend much time to configure it but just select the built-in protocol.'
- MAC address:** A text field containing 'DF.00.00.00.00.FF.01.AB'.
- Modify subnet ID and device ID according to MAC:** Fields for 'Subnet ID' and 'Device ID' with a 'Save' button.
- Upload picture:** Buttons for 'Upload...', 'Delete', and 'Exit'.



专业舞台灯光
Professional stage lighting



智能照明
Intelligent Lighting



智能酒店
Smart Hotel



智能家居
Smart Home



智能演出控制
ShowControl

HDL-BUS/RS232 Converter

The screenshot displays the HDL software interface for configuring an RS232 to HDL-BUS data transfer. The main window has a tabbed interface with 'Basic information' selected. The configuration fields include:

- Select device:** Device dropdown set to '1-16-HDL-MRS232.231'.
- Configuration:** Model 'HDL-MRS232.231', Subnet ID '1', Device ID '16'.
- Remark:** Remark field 'K 232<->485' with a 'Save' button.
- RS232 serial port configuration:** A 'Config serial port...' button is highlighted with a red box.
- RS232<->HDL BUS mode:** Mode dropdown set to 'ASCII control and feedback' with a 'Save' button.
- MAC address:** MAC field '0F.00.00.00.00.FF.01.AB'.
- Modify subnet ID and device ID according to MAC:** Subnet ID and Device ID input fields with a 'Save' button.

An inset dialog box titled 'Config serial port' is shown, with the following settings:

- Baud rate:** 9600 (highlighted with a red box).
- Stop bit and parity bit:** Stop bit:1, Parity bit:None (highlighted with a red box).
- Buttons: 'Save' and 'Exit'.

A red arrow points from the text 'Need to match with 3rd party system.' to the '9600' baud rate setting in the dialog box.

Need to match with 3rd party system.



专业舞台灯光
Professional stage lighting



智能照明
Intelligent Lighting



智能酒店
Smart Hotel



智能家居
Smart Home



智能演出控制
ShowControl

HDL-BUS/RS232 Converter

RS232→HDL-BUS

can set up to 200 strings and 20 targets for each string.

Basic information: **RS232->BUS** | BUS->RS232

Select device: Device: 1-16-HDL-MRS232.231

Current command number: 2 | Control mode: ASCII

Command information: 1 To 5 [Confirm]

Commar	Remark	The first	Input form	Character string
1		Valid	ASCII	on
2		Valid	ASCII	off
3		Invalid	ASCII	
4		Invalid	ASCII	
5		Invalid	ASCII	

Target information of current command: Target no. from(1-20): 1 To 1 [Confirm]

Object no	Subnet I	Device I	Type	Parameter 1	Parameter 2	Parameter 3
1	1	114	Scene switch	1(Area no.)	0(Scene no.)	N/A

Annotations: "Setup strings" points to the 'off' character string in the command table. "Setup control targets in HDL system." points to the 'Scene switch' target in the target table.



专业舞台灯光
Professional stage lighting



智能照明
Intelligent Lighting



智能酒店
Smart Hotel



智能家居
Smart Home



智能演出控制
ShowControl

HDL-BUS → RS232

When received universal switch command from HDL system, RS232 module can send out the preset strings to RS232 port.

RS232<->HDL-BUS data transfer

Basic information | RS232->BUS | BUS->RS232

Current command number 1 Current target number 1

Command information: 1 To 5 [Confirm]

Comman	Remark	Type	Parameter1	Parameter2
1		Universal switch	1(Switch no.)	On(Switch State)
2		Universal switch	1(Switch no.)	Off(Switch State)
3		Invalid switch	255	255
4		Invalid switch	255	255
5		Invalid switch	255	255

Target information of current command: Target no. from(1-20): 1 To 20 [Confirm]

Command r	Time	Input form	Character string
1	100ms	ASCII	abcde
2	100ms	ASCII	1
3	100ms	ASCII	2
4	100ms	ASCII	3
5	100ms	ASCII	4
6	100ms	ASCII	5
7	100ms	ASCII	6
8	100ms	ASCII	7
9	100ms	ASCII	8
10	100ms	ASCII	9
11	100ms	ASCII	10
12	100ms	ASCII	12
13	100ms	ASCII	13
14	100ms	ASCII	

Setup inputs from HDL system

Setup output strings to be transfer to RS232 port



专业舞台灯光
Professional stage lighting



智能照明
Intelligent Lighting



智能酒店
Smart Hotel

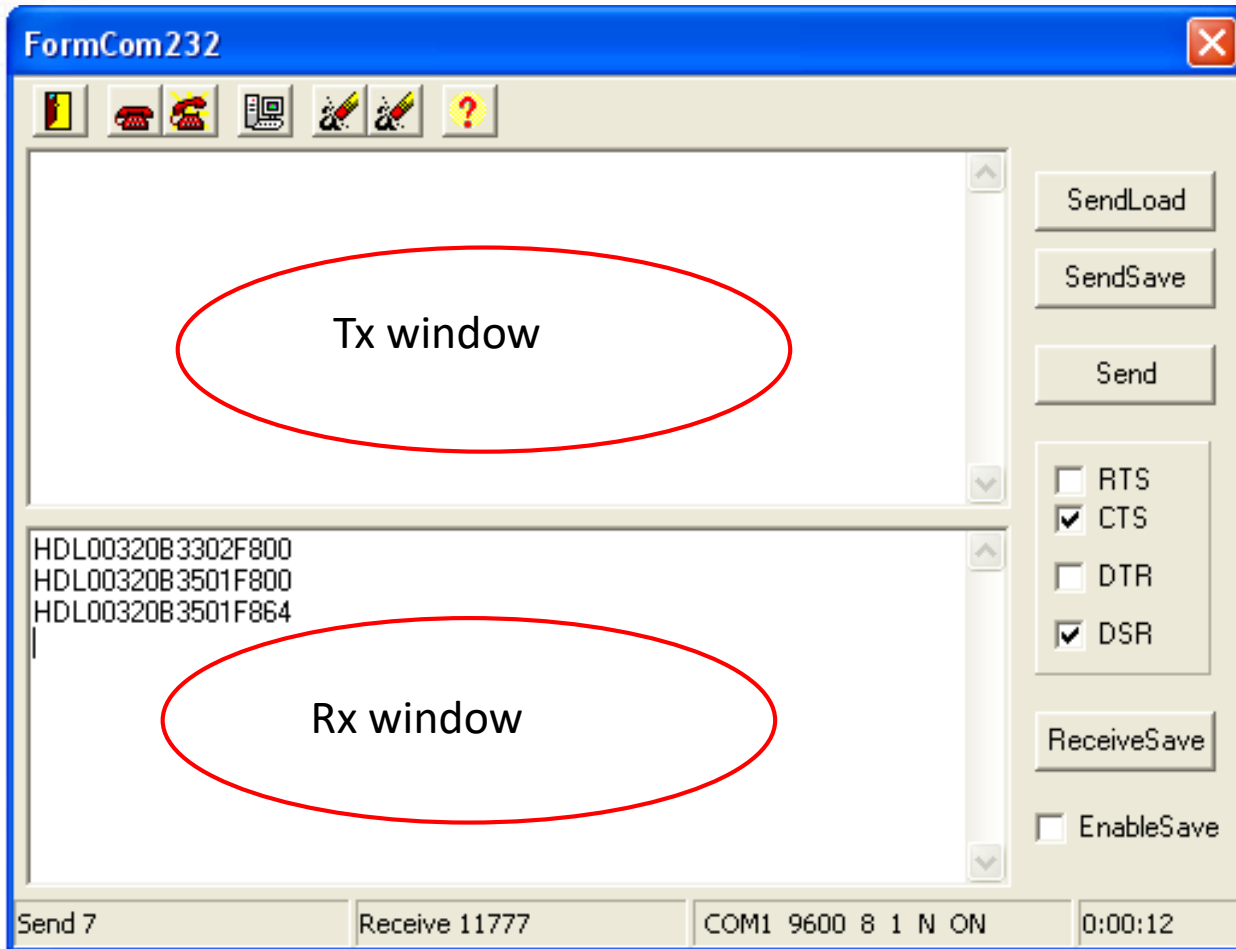


智能家居
Smart Home



智能演出控制
ShowControl

Using a tool to test the function (e.g., FormCom232.exe)



专业舞台灯光
Professional stage lighting



智能照明
Intelligent Lighting



智能酒店
Smart Hotel

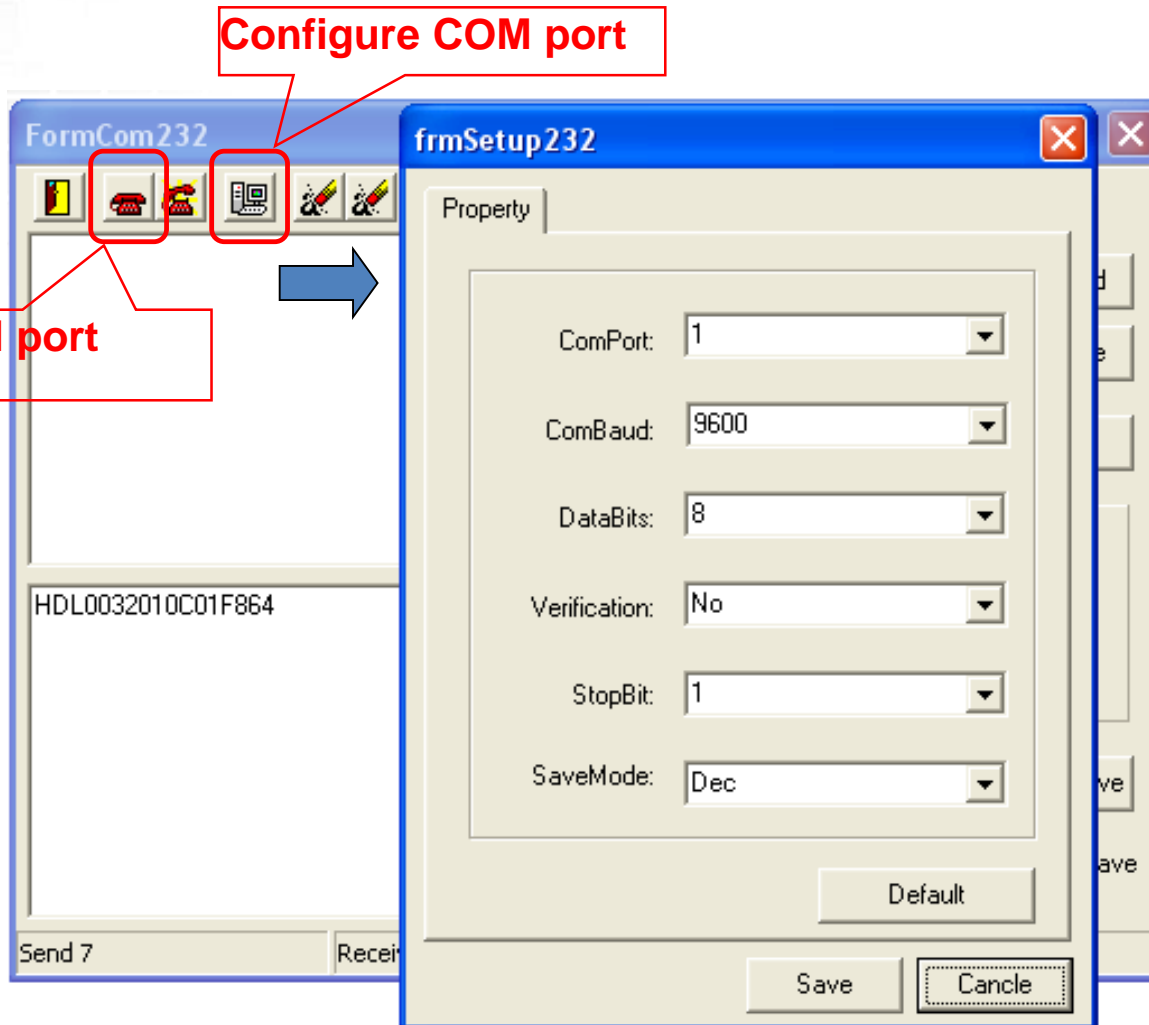


智能家居
Smart Home



智能演出控制
ShowControl

HDL-BUS/RS232 Converter



专业舞台灯光
Professional stage lighting



智能照明
Intelligent Lighting



智能酒店
Smart Hotel

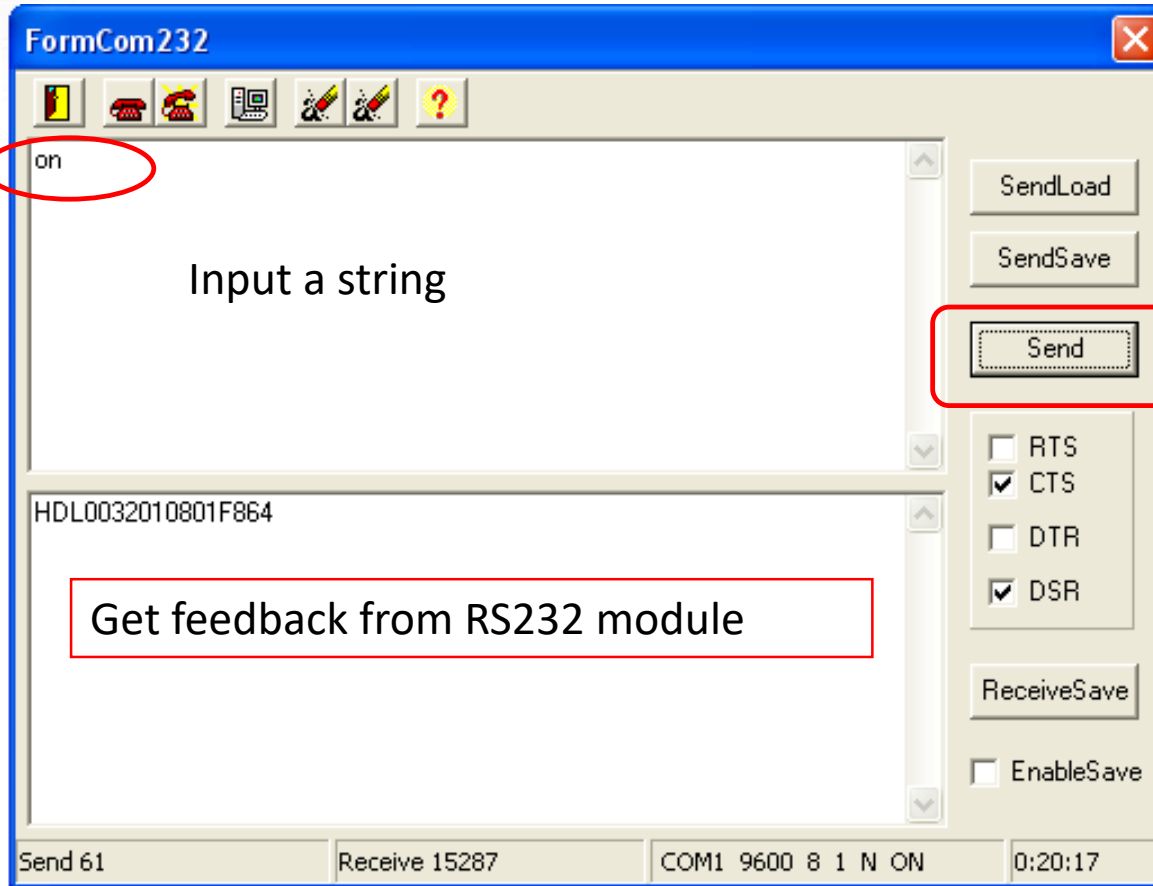


智能家居
Smart Home



智能演出控制
ShowControl

HDL-BUS/RS232 Converter



Send out the string

Get feedback from RS232 module



专业舞台灯光
Professional stage lighting



智能照明
Intelligent Lighting



智能酒店
Smart Hotel



智能家居
Smart Home



智能演出控制
ShowControl