

File Creation Date: Feb 20th, 2014

File Type: Programmer Manual

File Name: PM_Control AC and Floor Heating on DLP AC page.pdf

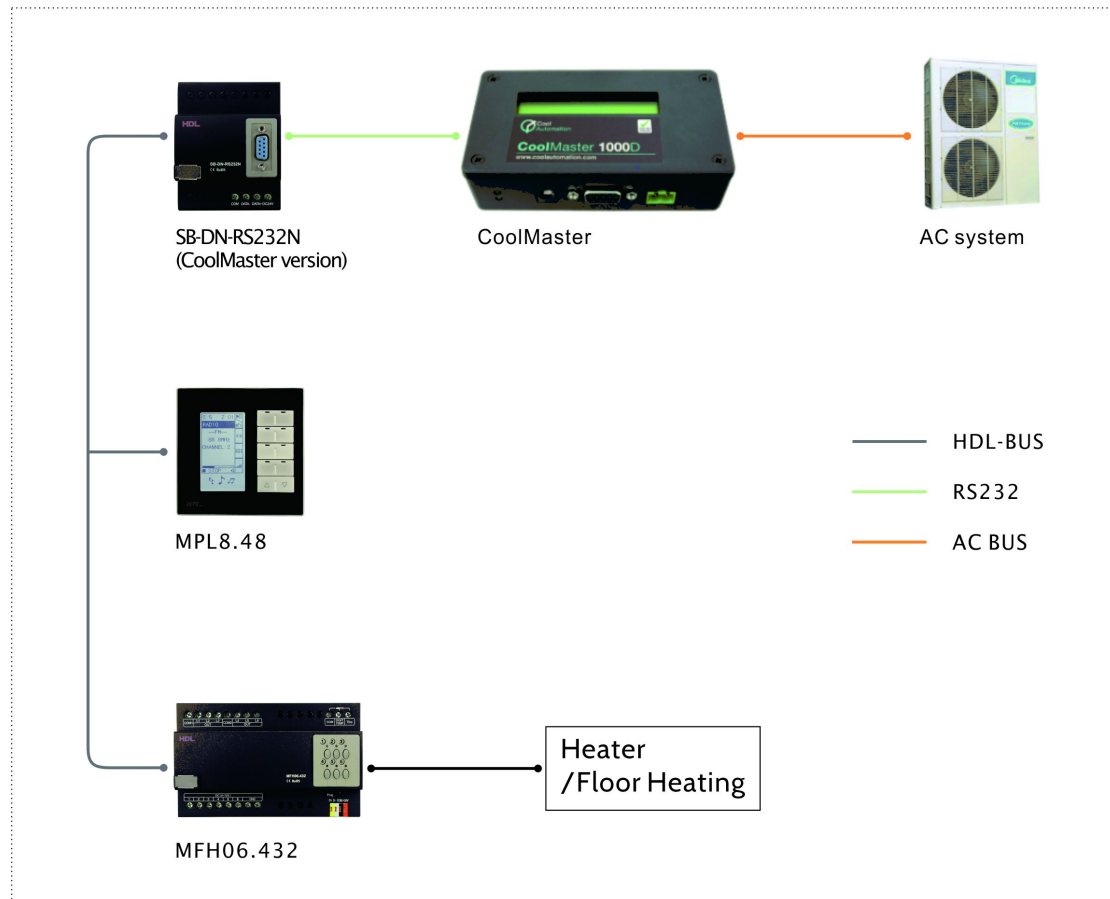
Goal

Use DLP AC page to control both AC unit and Floor Heating.

Description

There are AC and Floor Heating installed in the same room, the AC system is integrated with HDL-BUS system via a CoolMaster module (<http://coolautomation.com>) and a SB-DN-RS232N (CoolMaster version), the Floor Heating is controlled by SB-DN-FH06, the user interface is HDL-MPL8.48.

Diagram



Special requirement

The AC system can do heating and cooling, but the AC is disabled in Winter since generally it cannot work under minus 5°C. There shall be a season selection page for end-user to select the season.

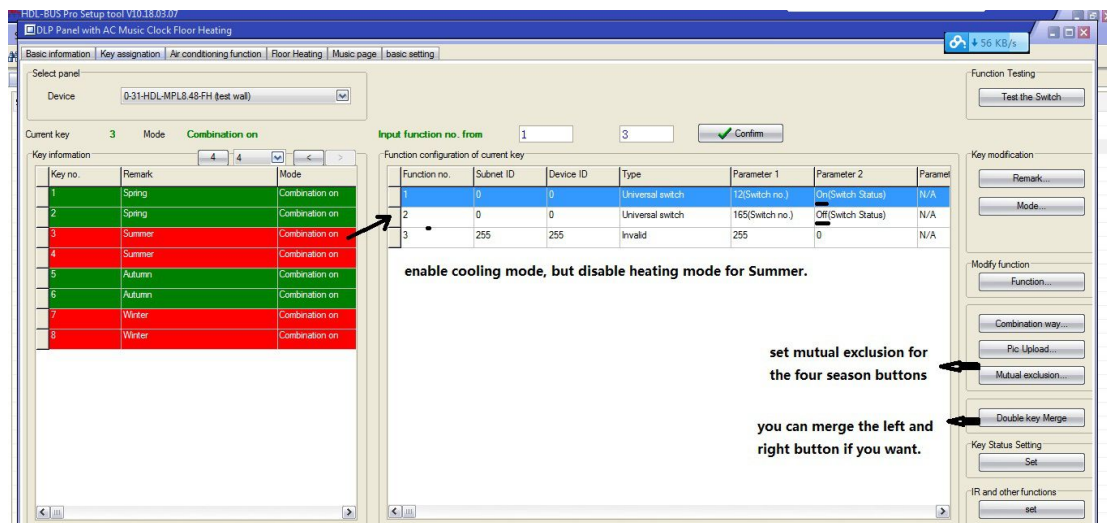
	AC cooling	AC heating
Spring	Yes	Yes
Summer	Yes	No
Autumn	Yes	Yes
Winter	No	No

Configuration

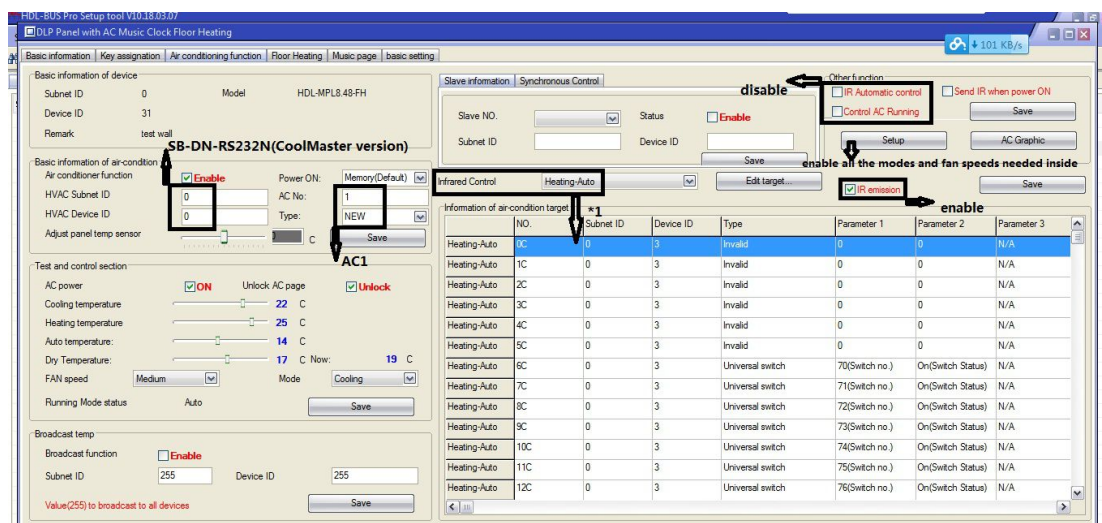
HDL-MPL8.48

Season selection page (recommend to use page 4)

According to the Universal switch list below, to enable or disable the cooling and heating mode of AC1 we can use universal switch 12 and 165, respectively.



AC page



*1

1) Set all tables - “Heating-Auto” table, “Heating-High” table, “Heating-Middle” table, “Heating-Low” table as exactly the same. The universal switches for SB-DN-FH06 can be looked up in “UV switch list for Floor Heating module.pdf”, this .pdf can be downloaded from here,

<ftp://59.41.255.150/HDL-BUS/HDL-BUS%20Products/SB-DN-FH06/>

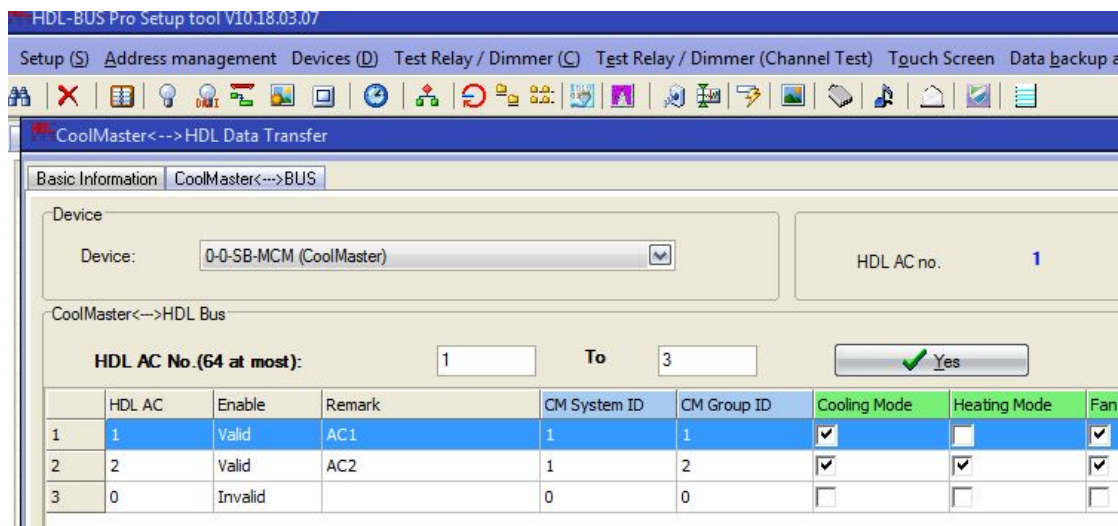
2) Set “Defined OFF” table and “Defined OFF” table using the corresponding Universal switch. (The universal switch can be found in the .pdf file also. E.g., the universal switch 11 is for Floor Heating channel 1.)

SB-DN-RS232N (CoolMaster version)

Firmware version

FW_SB-MCM_V04.01U(2014-02-19) or above

Fill in the indoor unit ID (the “CM System ID” and the “CM Group ID”, turn to CoolMaster tech support if help is needed, different AC system have different ID ranges), enable modes and fan speeds needed. (The heating and cooling modes will be enabled or disabled by pressing season buttons by user later.)



Universal Switch list for SB-DN-RS232N(CoolMaster) to enable/disable AC mode

(FW_SB-MCM_V04.01U(2014-02-19) or above)

	cooling mode	heating mode
AC1	12	165
AC2	13	166
AC3	14	167
AC4	15	168
AC5	16	169
AC6	17	170
AC7	18	171
AC8	19	172
AC9	20	173
AC10	21	174
AC11	22	175
AC12	23	176
AC13	24	177
AC14	25	178
AC15	26	179
AC16	27	180
AC17	28	181
AC18	29	182
AC19	30	183
AC20	31	184
AC21	32	185
AC22	33	186
AC23	34	187
AC24	35	188
AC25	36	189
AC26	37	190
AC27	38	191

AC28	39	192
AC29	40	193
AC30	41	194
AC31	42	195
AC32	43	196
AC33	44	197
AC34	45	198
AC35	46	199
AC36	47	200
AC37	48	201
AC38	49	202
AC39	50	203
AC40	51	204
AC41	52	205
AC42	53	206
AC43	54	207
AC44	55	208
AC45	56	209
AC46	57	210
AC47	58	211
AC48	59	212
AC49	60	213
AC50	61	214
AC51	62	215
AC52	63	216
AC53	64	217
AC54	65	218
AC55	66	219
AC56	67	220
AC57	68	221
AC58	69	222
AC59	70	223
AC60	71	224
AC61	72	225
AC62	73	226
AC63	74	227
AC64	75	228

SB-DN-FH06

Firmware version

FW_HDL-MFH06.332_V04.09U(2013-12-25) or above

Set Floor Heating module works in “Fully control” mode, the programmer manual – “PM_SB-DN-FH06_V04.05U(2013-01-09)V1.1.pdf” can be downloaded from here,

<ftp://59.41.255.150/HDL-BUS/HDL-BUS%20Products/SB-DN-FH06/>