

Partial Manual Dry Contact Sensors

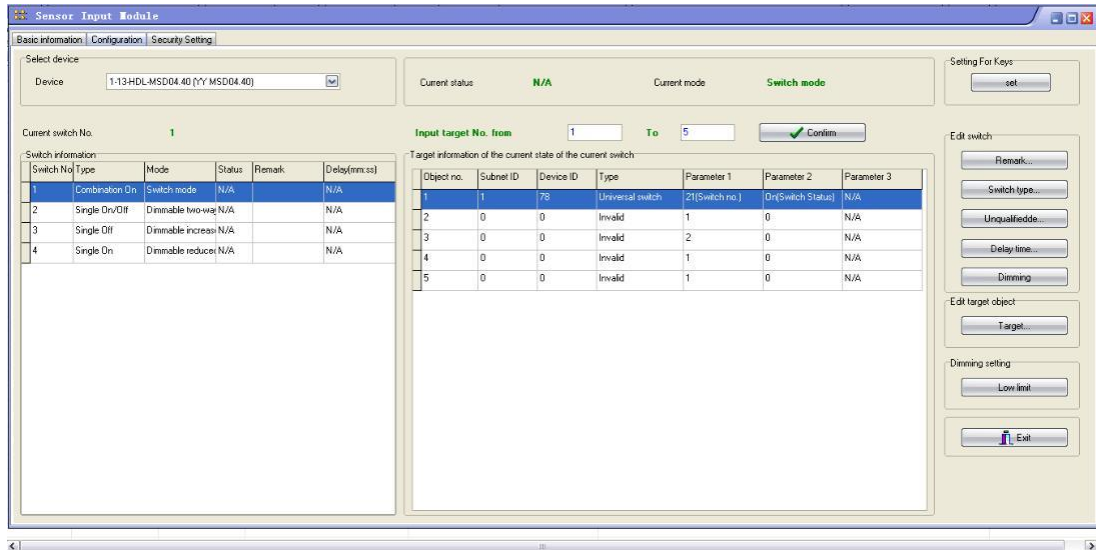
Configuration of dry contact inputs

(excerpt of User Manual HDL-MSD08.40/MSD04.40)

INDEX

4.2	Configuration
4.2.1	Remark
4.2.2	Switch type
4.2.3	Dimming options
4.2.4	Delay time
4.2.5	Dimming

4.2 Configuration



The setting interface is shown above, setting it is same as setting a HDL-BUS panel - select mode for each key, and set targets/objects to each key. Some modes are unique and you cannot find them in HDL-BUS panel, though.

4.2.1 Remark

Remarks of dry contacts, you may make remarks according to the installation places.

4.2.2 Switch type

Two different Switch types - Momentary and Toggle You can find two different types of switch from the market. **Toggle Switch** - When pressed, it is on, when released, it is off.



If “Mechanic switch” is selected for this kind of switch, a momentary effect can be produced.

Momentary Switch – It is bi-stable switch, you can set it on or off.



Generally select “Mechanic switch” mode for this kind of switch.

Available modes



Mechanic Switch

Send out a command (generally the on command, e.g., light on.) when Switch is connected, send out another (generally the off command) when the Switch is disconnected.

Single on

Assign the Switch can turn on one object only (one channel, or one scene, or one sequence, etc.)

Single off

Assign the Switch can turn off one object only (one channel, or one scene, or one sequence, etc.)

Single on/off

Assign the Switch can turn on/off one object only (one channel, or one scene, or one sequence, etc.)

Combination on

Assign the Switch can turn on multiple objects (channels, scenes, sequence, etc.).

Combination off

Assign the Switch can turn off multiple objects (channels, scenes, sequence, etc.)

Combination on/off

Assign the Switch can turn on/off multiple objects (channels, scenes, sequence, etc.)

Multi-function

Long press – combination off (or dim, if dimming is enabled in the Dry Contact module.

Dim the first object only, though.)

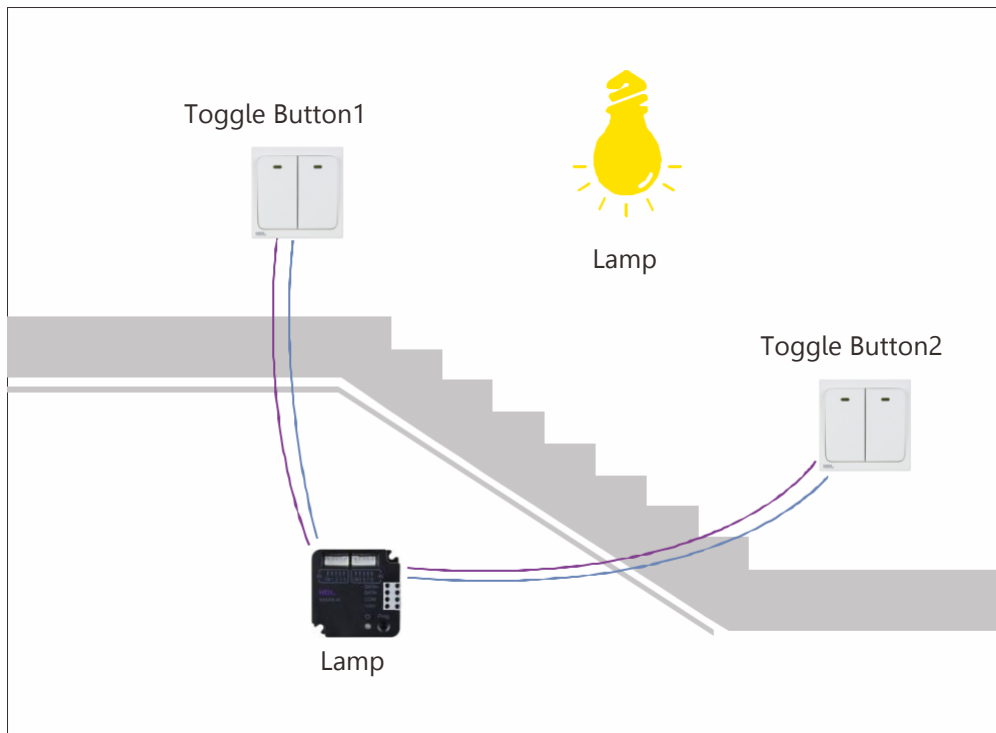
Short press – single on/off

Double click – Combination on

This mode can be used in, maybe, meeting, by double-click all the lighting can be on, by long-press, all lighting can be off, this can avoid mishandling and so it is **more secure.**

Parallel Switch

This key mode is originally designed for retrofit project where the end-users want to implement smart system – HDL-BUS, but they want to reserve the existing toggle buttons, the toggle buttons are to control one public area lighting (e.g., stair lighting) from multiple places



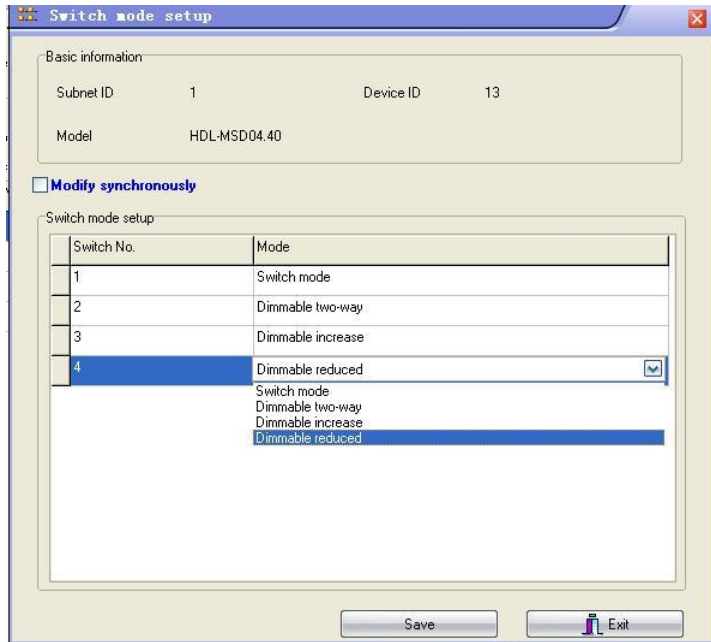
Wiring

Connect the two toggle buttons to two different dry contact channels

Setting

Select "Parallel switch" for both dry contact channels

4.2.3 Dimming options



Each channel can set the mode

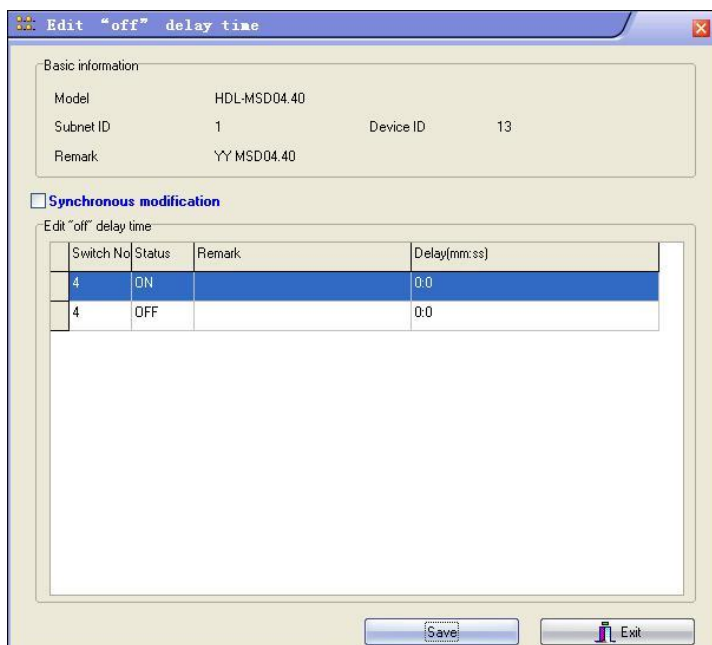
Switch mode: on/off control

Dimmable increase: long press to dim up

Dimmable reduced: long press to dim down

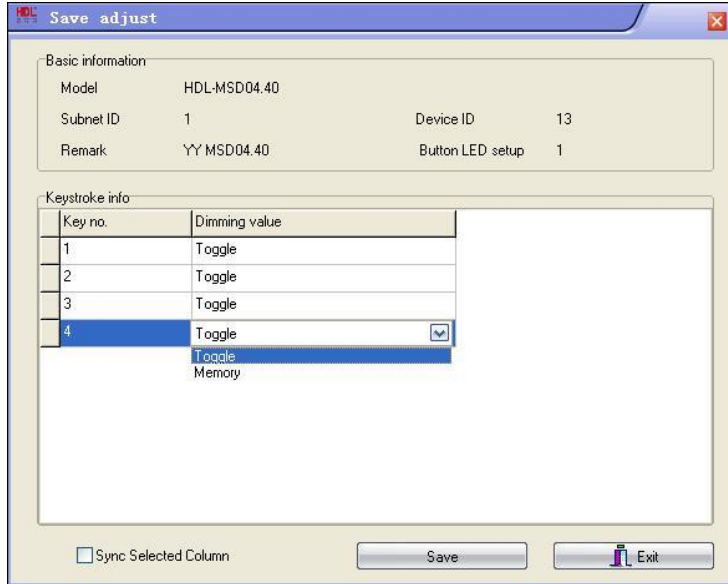
Dimmable two-way: long press to dim up, long press again can dim down

4.2.4 Delay time



Just the "Mechanic switch" switch type has the delay time.

4.2.5 Dimming



Key no. : channel no./ switch no.

Dimming value:

Toggle- when turn on light, the brightness will go to 100% **Memory-** save the brightness, when turn on light, the brightness will go to last brightness before turn off