



## **HDL Buspro Setup Tool2**

**HDL0.001.639**

**Guangzhou Hedong Technology Co., Ltd.**



# HDL Buspro Setup Tool2 User Manual

Version: V1.0.0

Release Date: 2020/05/23

---

## Content

1 Overview .....	1
2 Connection .....	2
3 Search Online Device .....	2
3.1 Select the Right IP .....	2
3.2 Fast Search .....	4
3.2 Advance Search .....	4
3.3 Modify Address and Name .....	5
3.4 Read Device Version .....	6
3.5 Other Settings in Device list .....	6
4 Data Backup and Restore .....	7
5 Device Online Upgrade .....	8
5.1 Automatic Upgrade .....	8
5.2 Manually Upgrade .....	9
6 Upgrade Library of Colorized DLP .....	10
7 Change Image for DLP .....	11
8 Learn IR Codes via IR Learner .....	12
9 Change Image for Hand Remote Controller .....	13
10 Serial Port Learner .....	13
11 HDL ON/Xiaobai/5.7 .....	14
12 Data Sharing .....	15
13 Relay/Dimming Channel Test .....	15
14 Wireless Device Signal Strength Test .....	16
15 Check IP MAC .....	16
16 Check MAC .....	17
17 Check DALI MAC .....	17
18 Allot address .....	17
19 Initialization .....	18
20 MFTCL .....	18
21 Target .....	19
21.1 Targets Template .....	19
21.2 Global scenes .....	21
22 Language .....	22
22 Check Version .....	22
23 Tool .....	22
24 Lock .....	23
25 Remote Access .....	23
26 Hotel mode .....	25
26.1 Search hotel host module .....	25
26.2 Search devices under host module .....	25
26.3 Other settings in Hotel mode .....	26

## Copyright Notice

Our company has all intellectual property rights to this document and its contents. Without the written authorization of the company, it is forbidden to copy or distribute to a third party. In case of infringement of intellectual property rights such as the company's copyright, the company will investigate its legal liability according to law.

Due to product version upgrade or other reasons, the contents of this document will be updated from time to time. Unless otherwise agreed, this document is only used as a guide, and all statements, information and suggestions in this document do not constitute any express or implied warranty.

GZ HDL Technology Co.,

## Modification Record

This record accumulates instructions for each document update. The latest version of the document contains updates from all previous document versions。

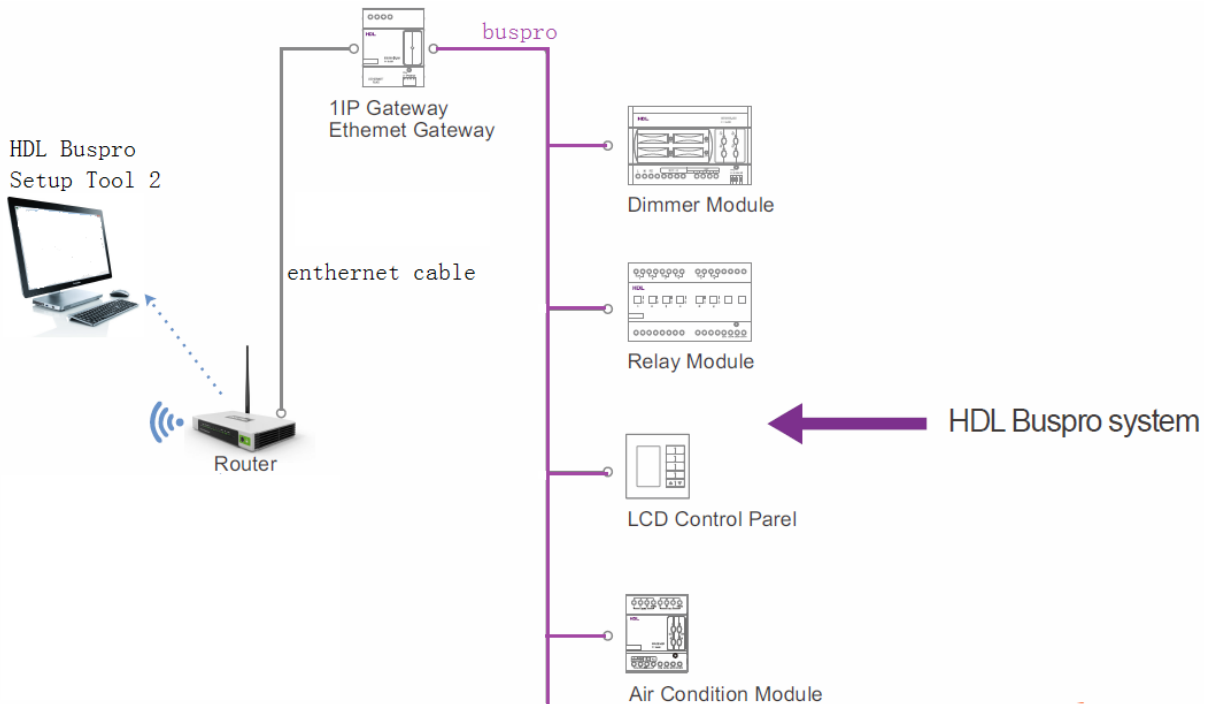
<b>Num</b>	<b>Version</b>	<b>Modification Content</b>	<b>Date</b>
1	V1.0.0	First official release	2020/05/23

# 1 Overview

HDL Buspro Setup Tool 2 is the new program software which designed by HDL, it is used to program HDL buspro devices.

- Online program buspro devices.
- Remote access.
- Device data backup/restore.
- Save the targets as template, and modify/import template.
- Upgrade device.
- Change image for DLP panels and hand remote controller.
- Test wireless device signal strength.
- Program Xiao bai and HDL ON project.
- Program GVP project.
- Learn IR codes via IR learner.
- Language change, can select as English and Chinese.
- Command text.

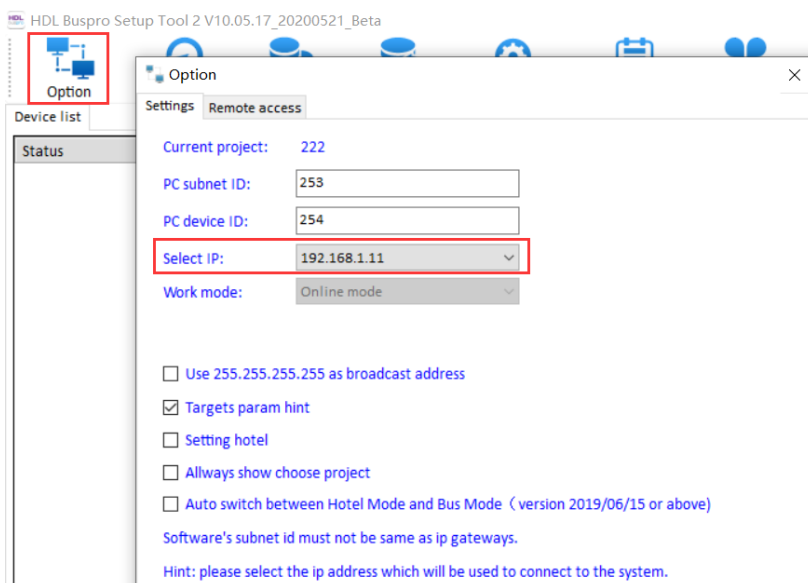
## 2 Connection



**Notice:** HDL IP gateway must be same IP segment with the PC.

## 3 Search Online Device

### 3.1 Select the Right IP



- PC subnet ID and PC device ID: The HDL address of current software. Make sure this PC subnet ID must be different with HDL gateway device.
- Select IP: Select the IP which IP segment is same with gateway.
- Work mode: Online mode, which can search online device.
- Use 255.255.255.255 as broadcast address: Entire network broadcasting, used for search hotel host module.
- Targets param hint: After enable it, it will popup the hint in target setting page. Suggest enable it.
- Setting hotel:
 

After enable it, this software can search hotel host module, but can't search buspro gateway module.

After disable it, this software can search buspro gateway module, but can't search hotel host module.
- All ways show choose project: After enable it, this software can show the Project select page when you run software.
- Auto switch between Hotel Mode and Bus Mode: Auto switch hotel mode and buspro mode. Not suggest enable it.

### Notice:

1: After finished the setup, click OK, and then click Cancel or exit this page.

2: After exit this page, you can see the current IP/device number/Mode at the bottom of the main page.

The screenshot shows the HDL Buspro Setup Tool 2 V10.05.17\_20200521\_Beta interface. The top menu bar includes: Option, Fast search, Data backup, Data restore, Advance search, Target, Function, Language, and Check version. Below the menu is a 'Device list' table with the following data:

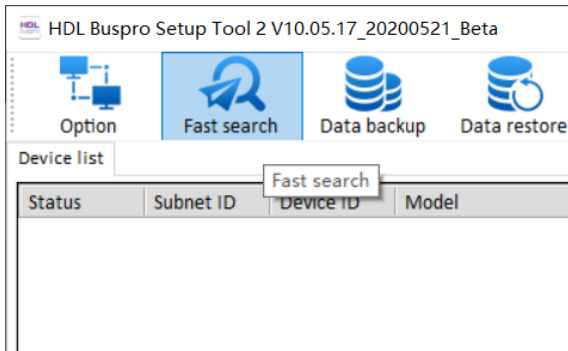
Status	Subnet ID	Device ID	Model	Name	Description(double	Version	Hardware version
✓	5	0	HDL-MBUS01IP.431		1 port switchboard	Unread	N/A
✓	5	3	HDL-MCLog.431	logic	Logic timer	Unread	N/A
✓	5	4	HDL-MR0416.431	Relay	4 channels 16A relay IV	Unread	N/A
✓	5	7	HDL-MW02.431		2ch window curtain c...	Unread	N/A
✓	5	12	HDL-MSP07M.4C	Sensor	PIR,temp & lux sensor	Unread	N/A
✓	5	22	HDL-MD0403.432	Dimmer	4ch 3A leading edge ...	Unread	N/A
✓	5	30	HDL-MSD04T.40	Dry Contact	4 zone drv contact m...	Unread	N/A

At the bottom of the interface, a status bar displays: Current select ip: 192.168.1.11, Total device: 13, Online: 13, Offline: 0, Current mode: Online mode, and Current setting: [dropdown menu].



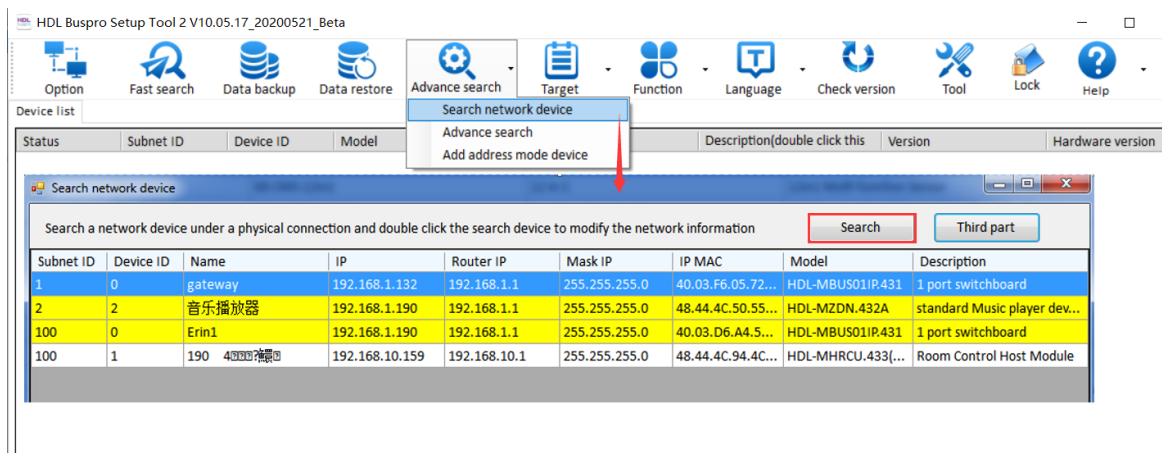
### 3.2 Fast Search

It will fast search all online devices. Make sure you select correct IP in Option page.

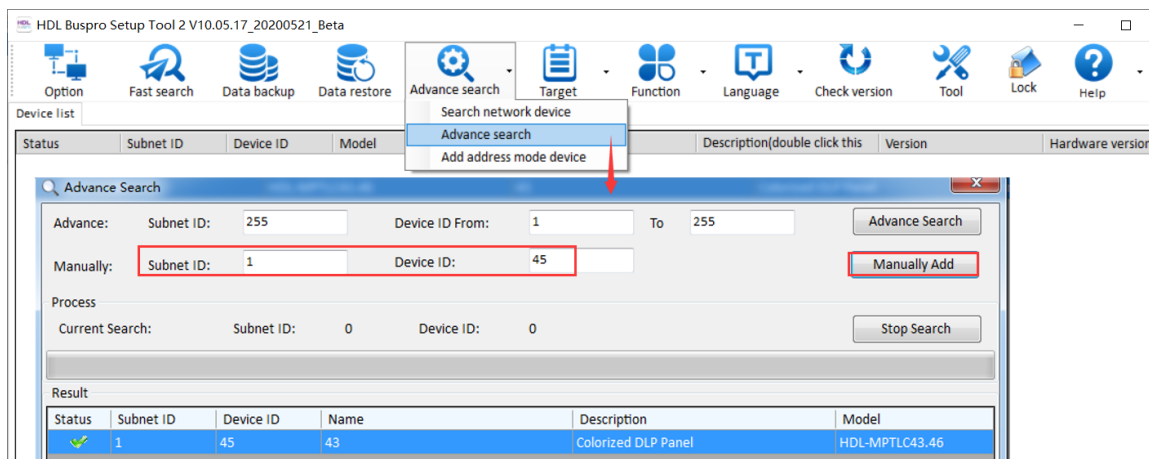


### 3.2 Advance Search

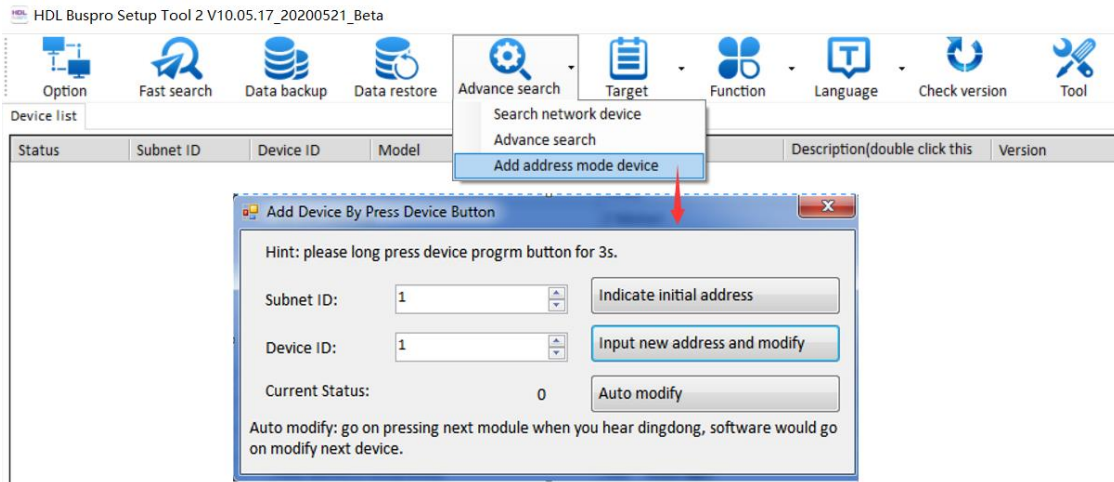
1. Search the network device: You could search all the IP port device which in the same router.



2. Search the specified address: Fill in the address, and then Manually add.



3. Add address mode device: You can use this way to read current device’s address and you can modify the address.



Take Din rail device like relay as example:

1. Press the device prog button for 3s, make the device go to address mode.
2. Go to Add Device By Press Device Button page, it will show current device’s address.
3. Input the subnet and device ID, click ‘Input new address and modify’ button to modify new address.

In new project, we can use auto modify mode to modify devices’ address.

1. Click Auto Modify.
2. Press the device prog button for 3s, make the device go to address mode.
3. When hear ‘ding dong..’ voice in software, means auto modify success. You can press next device prog button for 3s, modify next device’s address.

### 3.3 Modify Address and Name

After searched the online device using Fast Search. Software will show the devices list.

Status	Subnet ID	Device ID	Model	Name	Description(double click this)	Version
✓	5	0	HDL-MBUS01P.431	gateway	1 port switchboard	Unread
✓	5	3	HDL-MCLog.431	logic	Logic timer	Unread
✓	5	4	HDL-MR0416.431	Relay	4 channels 16A relay IV	Unread
✓	5	7	HDL-MW02.431		2ch window curtain controller	Unread
✓	5	12	HDL-MSP07M.4C	Sensor	PIR,temp & lux sensor	Unread

Double click Subnet ID and Device ID can modify the address.

Double click Name area can modify the name.

Double click the Model name, can enter to the device.

### 3.4 Read Device Version

Double click the Version area can read the device's version.

Double click the Hardware version area can read the device's hardware version, some devices not support to read hardware version.

Status	Subnet ID	Device ID	Model	Name	Description(double click this column	Version	Hardware version
✓	5	0	HDL-MBUS01IP.431	gateway	1 port switchboard	HDL_V05.18U_2019/11/07	01198 STM32F107RCT6_NETIP
✓	5	3	HDL-MCLog.431	logic	Logic timer	HDL_V04.11U_2019/12/16	N/A
✓	5	4	HDL-MR0416.431	Relay	4 channels 16A relay IV	Unread	N/A
✓	5	7	HDL-MW02.431		2ch window curtain controller	Unread	N/A

### 3.5 Other Settings in Device list

Right click in Device list, there are some functions inside.

Status	Subnet ID	Device ID	Model	Name	Description(double click this column	Version	Hardware version
✓	5	0	HDL-MBUS01IP.431	gateway	1 port switchboard	HDL_V05.18U_2019/11/07	01198 STM32F107RCT6_NETIP
✓	5	3	HDL-MCLog.431	logic	Logic timer	HDL_V04.11U_2019/12/16	N/A
✓	5	4	HDL-MR0416.431	Relay	4 channels 16A relay IV	Unread	N/A
✓	5	7	HDL-MW02.431		2ch window curtain controller	Unread	N/A
✓	5	12	HDL-MSP07M.4C	Sensc			N/A
✓	5	22	HDL-MD0403.432	Dimm			N/A
✓	5	30	HDL-MSD04T.40	Dry C			N/A
✓	5	33	HDL-MC-48IPDMX.431	DMX			N/A
✓	5	37	HDL-MIRC01T.40	contr			N/A
✓	5	40	HDL-MDLED0605.432	LED			N/A
✓	5	59	HDL-MC64-DALI.431	DALI			N/A
✓	5	203	HDL-MPTL14.46-A	14			N/A
✓	120	1	HDL-MZBOX.A50B.30	HDL-			N/A

- Find it: After clicked it, will help you find it fast. Some old firmware not support this.
- Modify address: Modify current device's address.
- Rename: Rename current device.
- Delete selected device: Delete selected device in Device list.

- Delete all device: Delete all device in Device list.
- Read version: Read selected device's firmware version.
- Auto read version: Auto read all devices' firmware version.
- Read hardware version: Read selected device's hardware version.
- Auto read hardware version: Auto read all devices' hardware version.
- Export device list: Export current device list as excel file.
- Import backup device: Import backup file, check the settings in backup file.
- Export Config for AD gateway: Export the configuration of AD gateway.

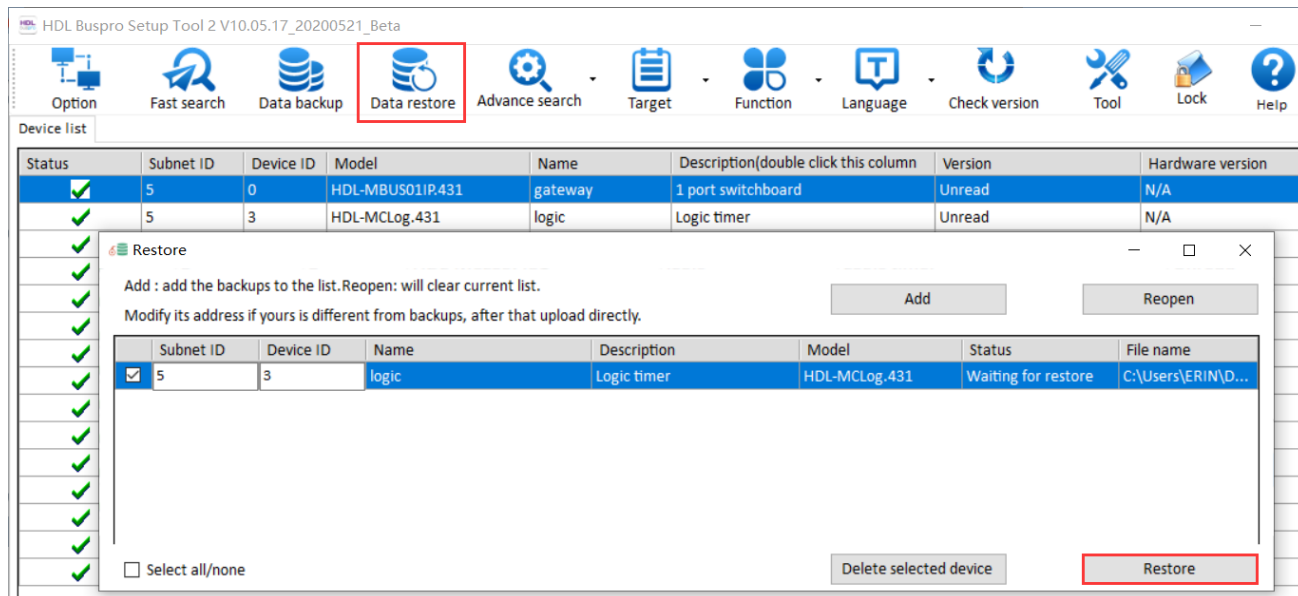
## 4 Data Backup and Restore

Backup: Searched the device first, and select the device to backup in Data Backup page.

The screenshot shows the HDL Buspro Setup Tool 2 V10.05.17\_20200521\_Beta interface. The 'Data backup' menu item is highlighted in the top toolbar. A 'Data Backups' dialog box is open, displaying a table of devices with columns for SubNet ID, Device ID, Model, Name, Description, Backup status, Backup icons, and Only backup icons. The device with SubNet ID 5 and Device ID 3 is selected. A 'Backup' button is highlighted in the bottom right of the dialog box.

Status	Subnet ID	Device ID	Model	Name	Description(double click this column	Version	Hardware version
✓	5	0	HDL-MBUS01IP.431	gateway	1 port switchboard	Unread	N/A
✓	5	3	HDL-MCLog.431	logic	Logic timer	Waiting for bac...	
✓	5	4	HDL-MR0416.431	Relay	4 channels 16A relay IV	Waiting for bac...	
✓	5	5	HDL-MAC01.431	MAC01	Air-conditioning controller	Waiting for bac...	
✓	5	7	HDL-MW02.431		2ch window curtain contro...	Waiting for bac...	
✓	5	12	HDL-MSP07M.4C	Sensor	PIR,temp & lux sensor	Waiting for bac...	
✓	5	16	SB-DN-SEC250K	security	Advanced security controller	Waiting for bac...	
✓	5	22	HDL-MD0403.432	Dimmer	4ch 3A leading edge dimm...	Waiting for bac...	
✓	5	30	HDL-MSD04T.40	Dry Contact	4 zone dry contact module ...	Waiting for bac...	
✓	5	33	HDL-MC-48IPDMX.431	DMX48	48 channels scene control...	Waiting for bac...	
✓	5	37	HDL-MIRC01T.40	control	Infrared signal emission,r...	Waiting for bac...	
✓	5	40	HDL-MDLED0605.432	LED	6ch 5A Intelligent LED dim...	Waiting for bac...	
✓	5	59	HDL-MC64-DALI.431	DALI	64 channels DALI controller	Waiting for bac...	

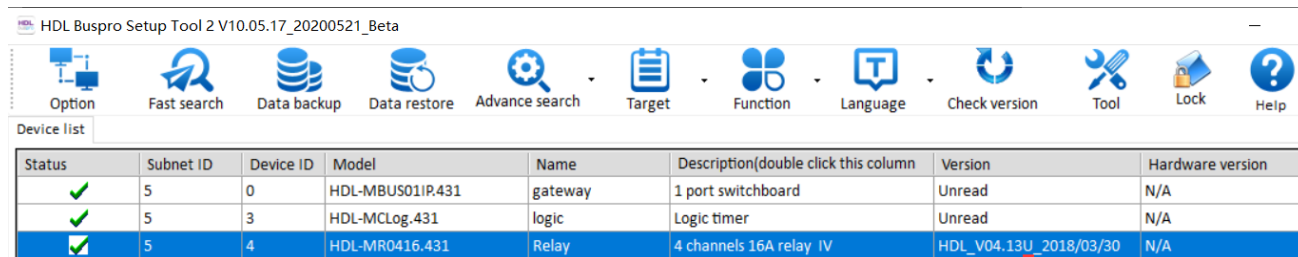
Restore: Click the 'Data restore' button, select the backup file, and fill in the device's address which needs to restore.



## 5 Device Online Upgrade

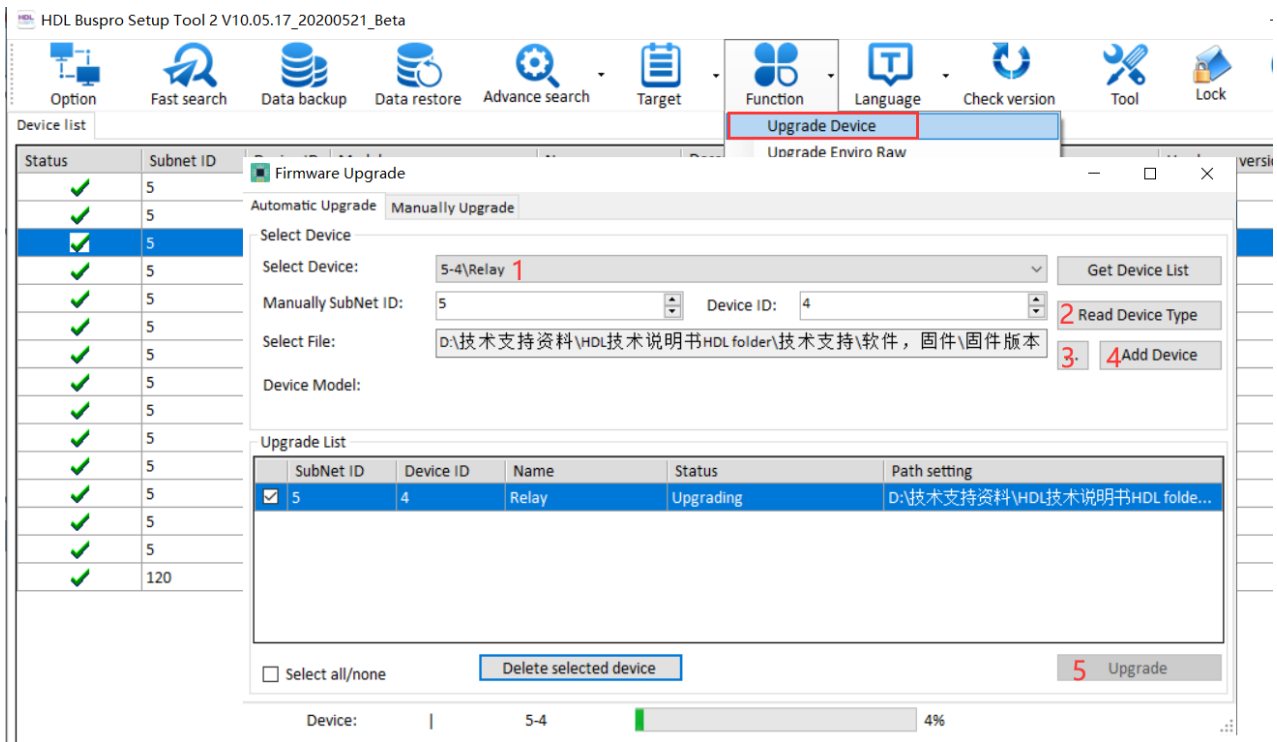
It is used for the normal panel series, HDL-MPL8.48, DIN rail series and sensor series, and they should support online upgrade function (if there is an “U” in the firmware version info, e.g. HDL\_V04.10U\_2016/05/23, it will support online upgrade).

Different device use different firmware, pls check Device Type before upgrade.



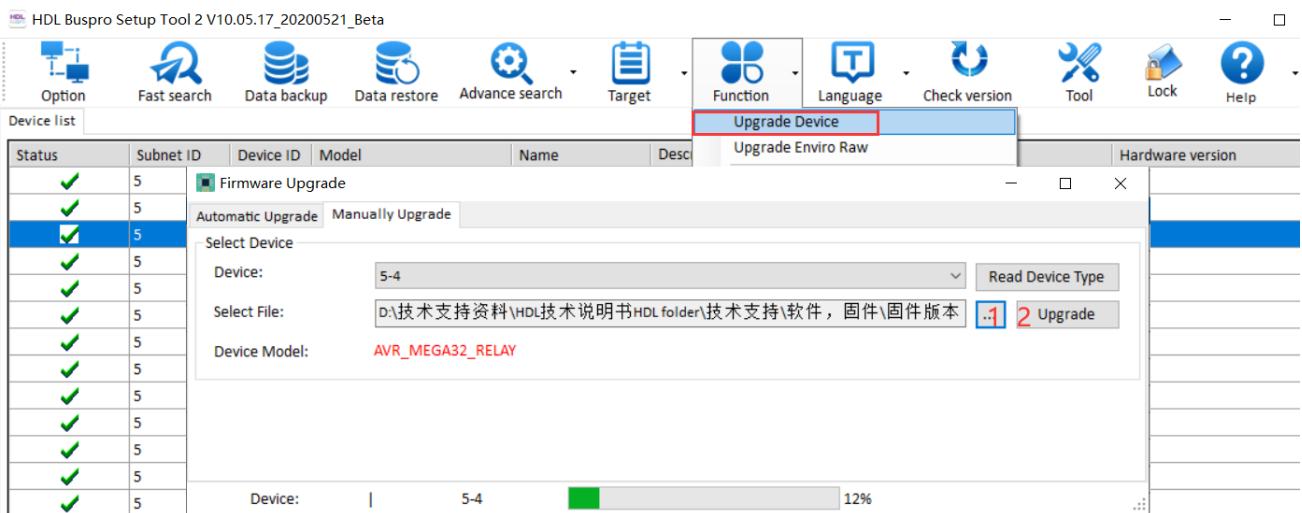
### 5.1 Automatic Upgrade

- 1- Search the online devices, and go to Automatic Upgrade page, select the online device which needs upgrade.
- 2- Read device's type.
- 3- Select the upgrade file (\*.bin).
- 4- Add the device to upgrade list.
- 5- Start upgrade.



## 5.2 Manually Upgrade

When automatic upgrade failed, can use manual upgrade to continue the upgrade.



1- Go to Manually Upgrade page, power off the device, keep pressing the **PROGRAMING** button when power on it.

*How to press the PROGRAMING button?*

*For button panel, press the first and the last button together.*

*For HDL-MPL8.48, press the two bottom buttons together.*

*For DIN rail series, press the 'Prog' button.*

*For sensor series, press the address modify button.*

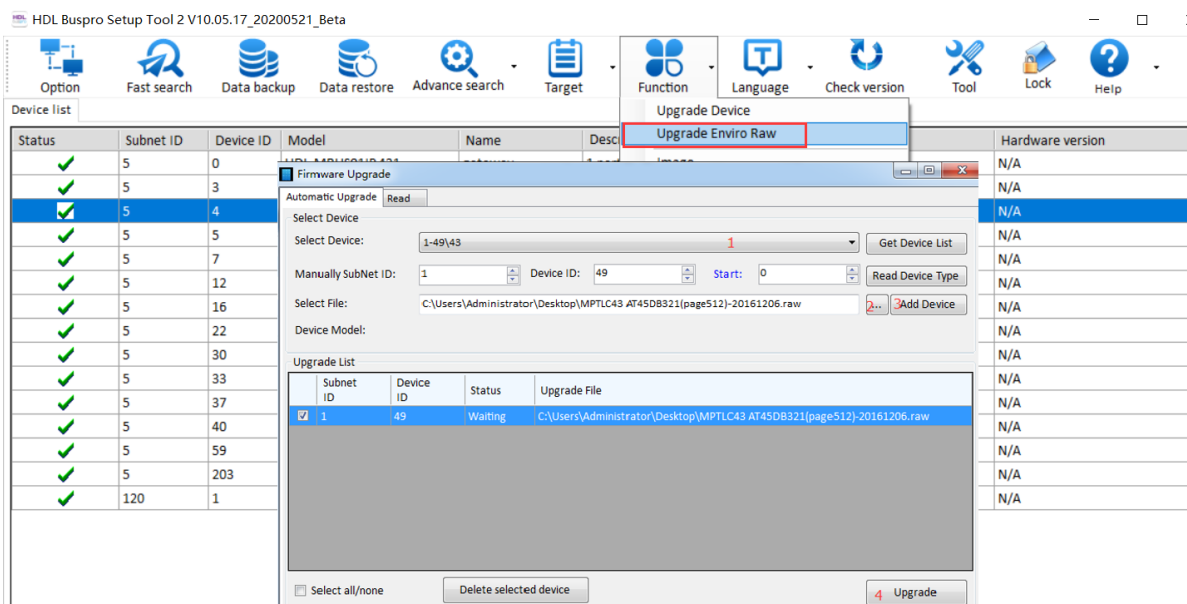




- 2- Read device type.
- 3- Select the upgrade file(\*.bin).
- 4- Upgrade.
- 5- Done.

## 6 Upgrade Library of Colorized DLP

It can upgrade the library of enviro panel. If the interface of enviro's is disordered, you can try to upgrade its library.

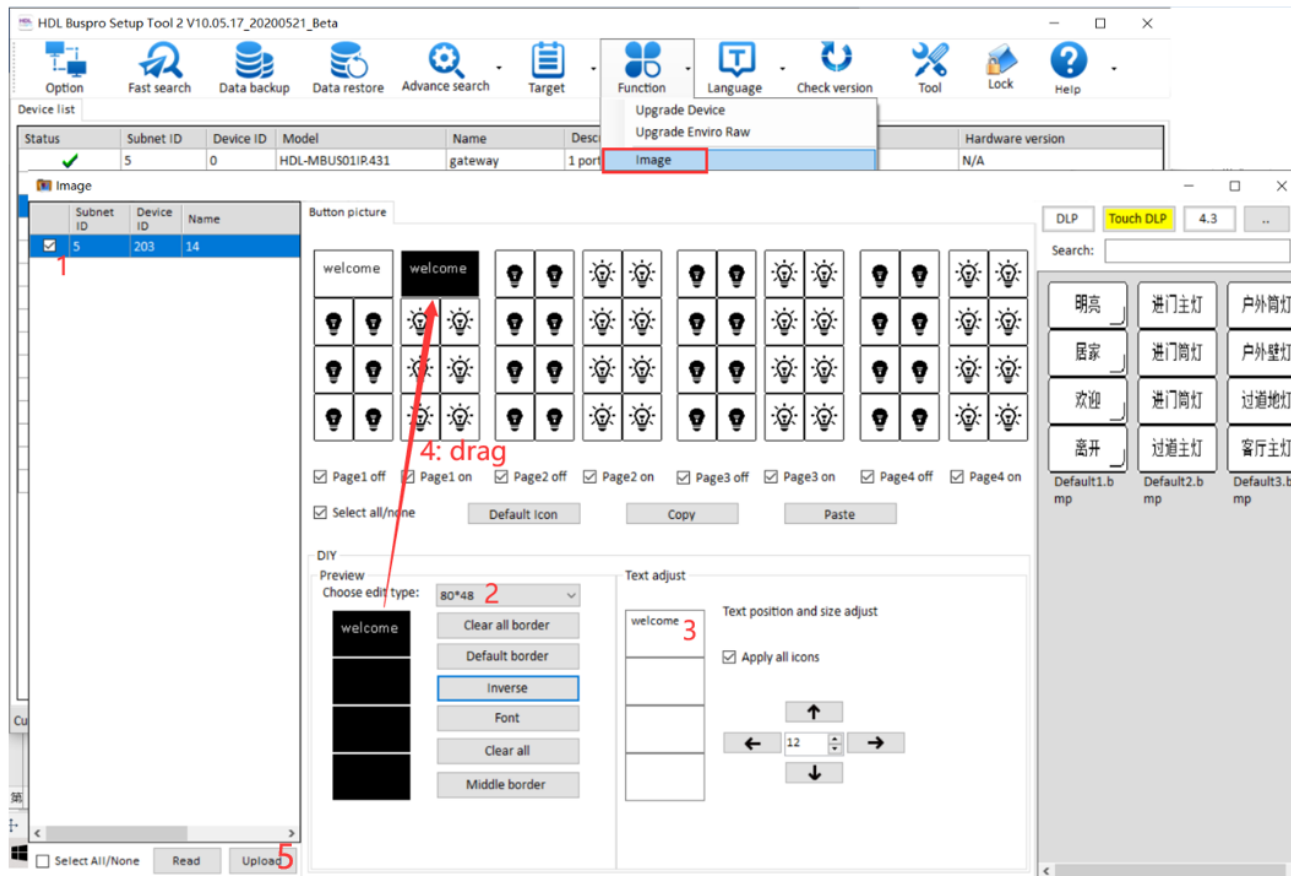


- 1- Search the enviro panel, and go to 'Upgrade Colorized DLP' page, select the panel which needs upgrade.
- 2- Select the upgrade file (\*.raw).
- 4- Add the device to upgrade list.
- 5- Start upgrade. After upgrade, need to repower the gateway.

**Notice:** Need to use MBUS01IP.431 (firmware newer than 2018) work as gateway to upgrade library.

## 7 Change Image for DLP

Each DLP has button icon, it can be modified by software.



- 1- Search the DLP, and go to 'Image' page, select the DLP which needs to change icons.
- 2- Choose the edit type, the size must need to match the DLP button.
- 3- Edit the name.
- 4- Drag to the right position. Or you can doubt click the right position to add new icon.
- 5- Click 'Upload'.

Size for DLP:

HDL-MPL8.48: 40\*32

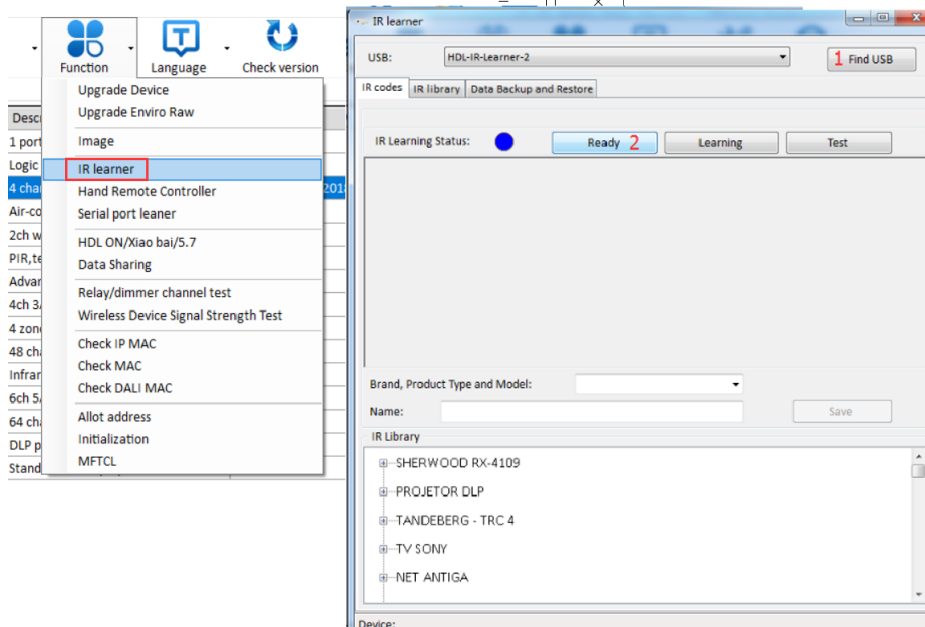
HDL-MPTL14.46: 40\*48

HDL-MPTLC43.46: button: 46\*46, background: 272\*480

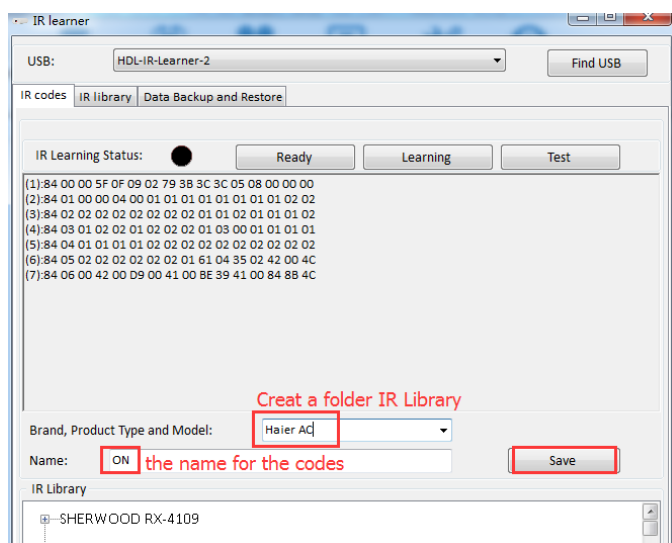


## 8 Learn IR Codes via IR Learner

Use HDL IR Learner (SB-IR-Learn.01) to learn the IR codes from 3rd part remoter.

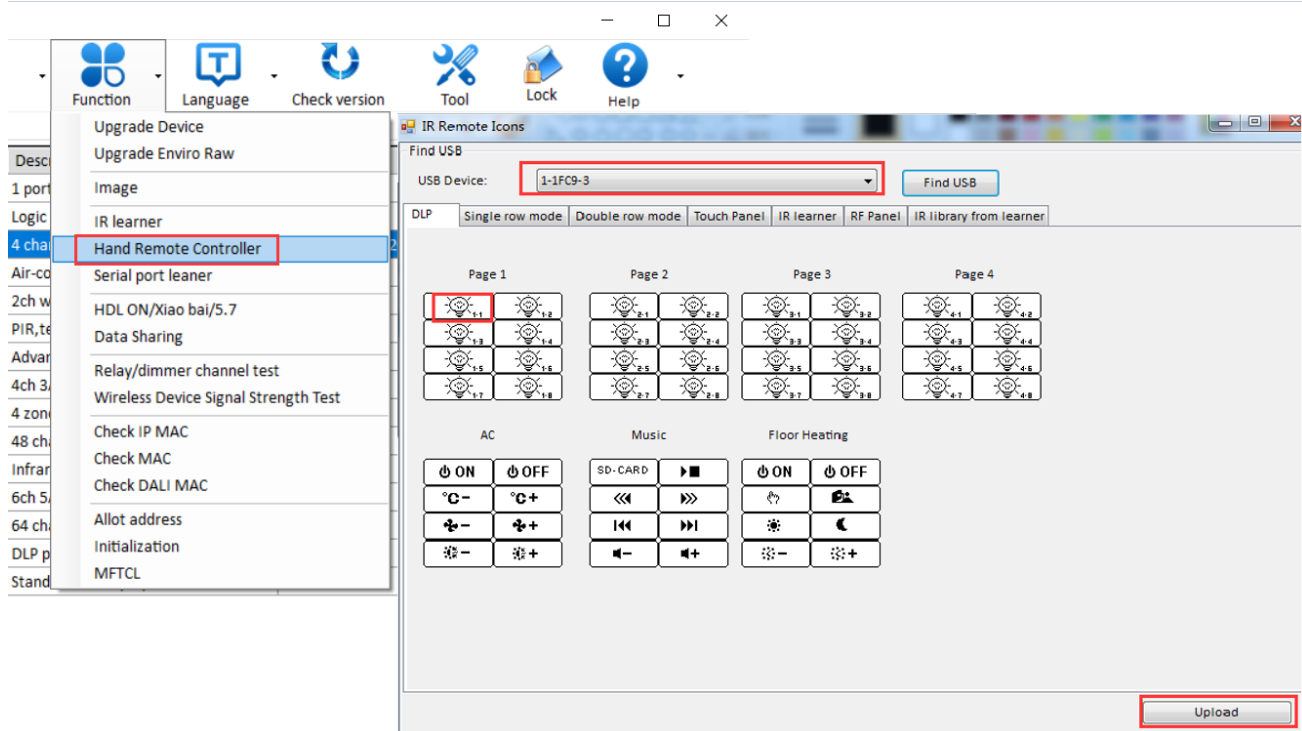


- 1- Connect the learner to PC via USB cable, and select the USB device.
- 2- Click 'Ready' button, the Red and Blue indicators of learner will turn on.
- 3- Put the 3rd party remote close to the IR learner and press the key you want the IR learner to learn.
- 4- Click 'Learning' button, will show the codes you have learnt. Click 'Test' button can test the codes which you learnt.
- 5- After tested, you can save the codes to IR Library.



## 9 Change Image for Hand Remote Controller

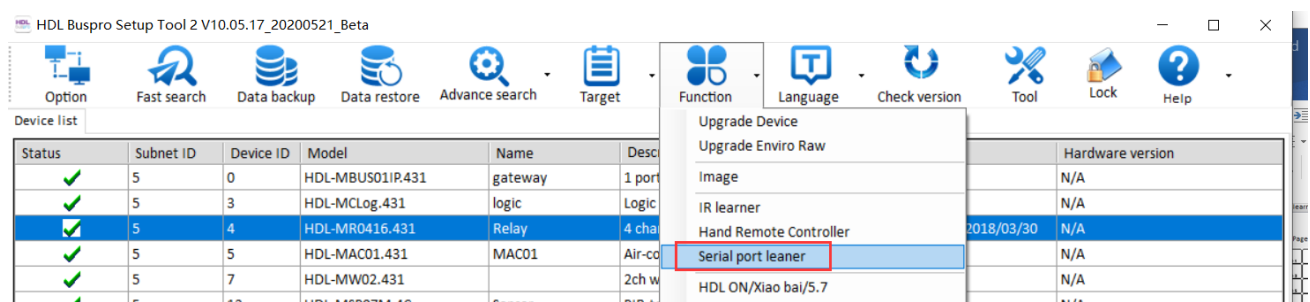
HDL-MTIRW hand remote controller can be changed the image by HDL Buspro Setup Tool2.



- 1- Connect the MTIRW module to PC via USB cable.
- 2- Go IR Remote Icons page, and select the USB device.
- 3- Double click the icon which you want to change, and select the new one.
- 4- Click 'Upload' button.

## 10 Serial Port Learner

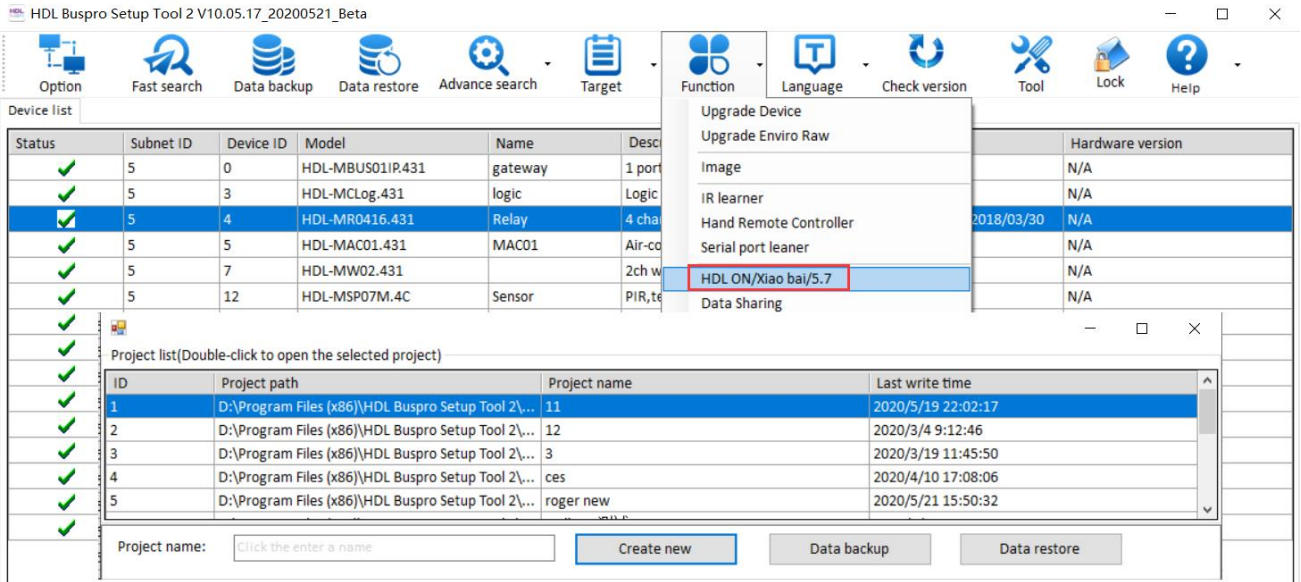
Learn IR Codes via Serial Port Learner, this is for special project.



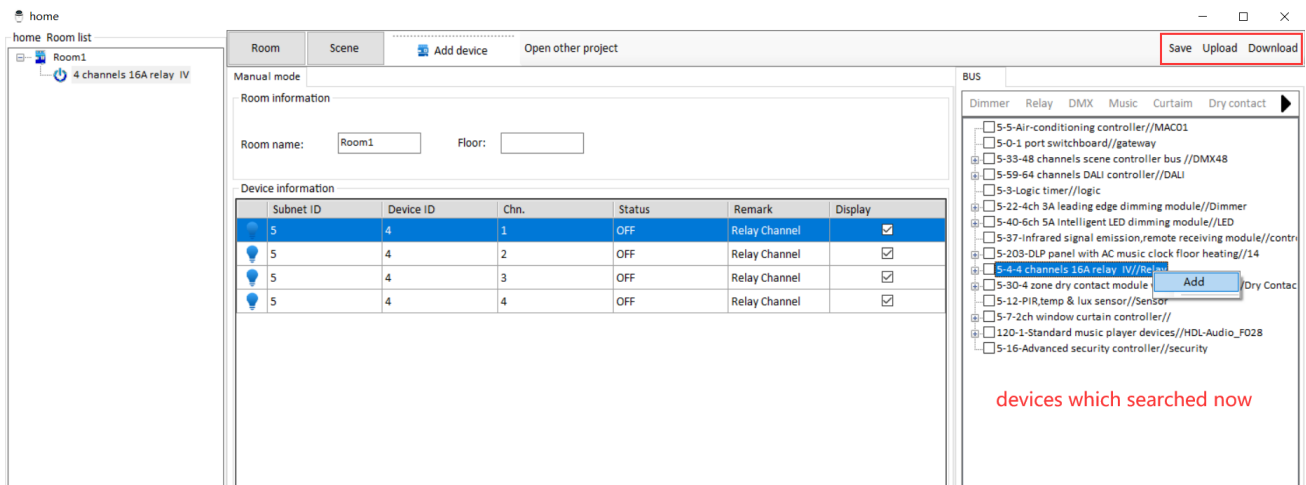
# 11 HDL ON/Xiaobai/5.7

Buspro software can program data, and then upload to HDL ON app/Xiaobai/Wall app.

For more details, pls refer to different app’s user manual.

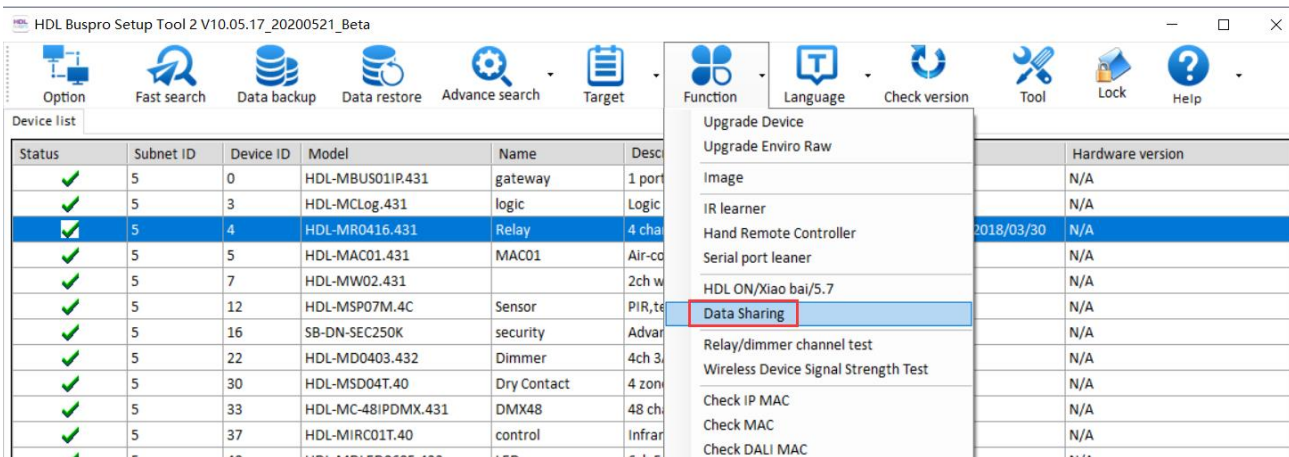


- 1- Create new project.
- 2- Add Room
- 3- In “Add device” -- “OneIP”—add “OnePortBus”, set your gateway data.
- 4- Add device, or right click the device which in right side, add the online device.
- 5- Upload data from buspro software to app.



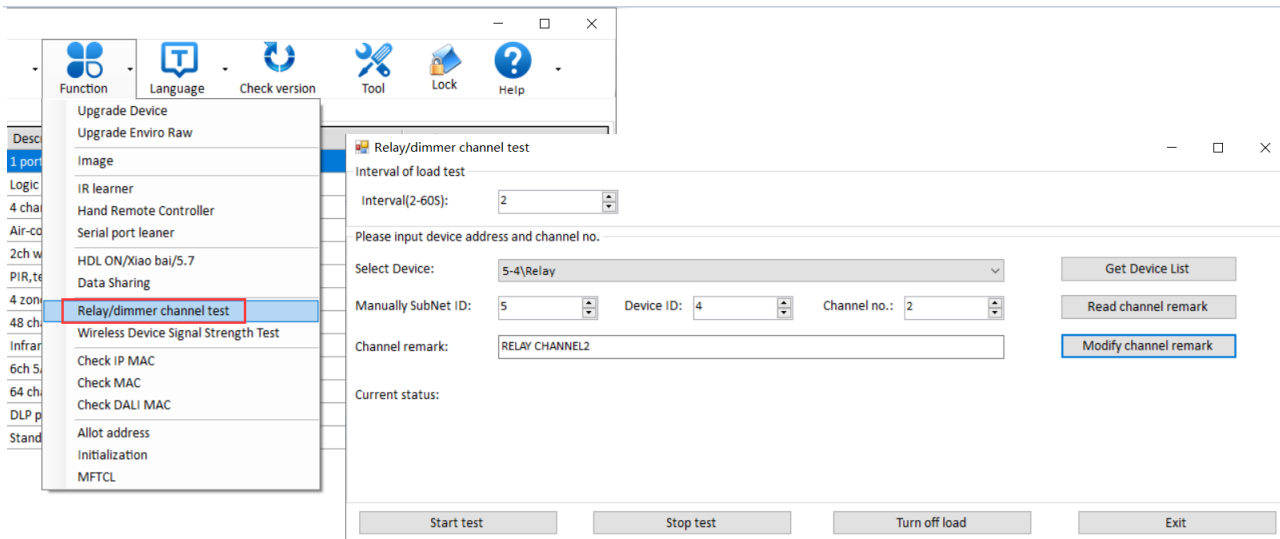
## 12 Data Sharing

Share the data from buspro software to GVP software, for more details, pls refer to GVP software's user manual.



## 13 Relay/Dimming Channel Test

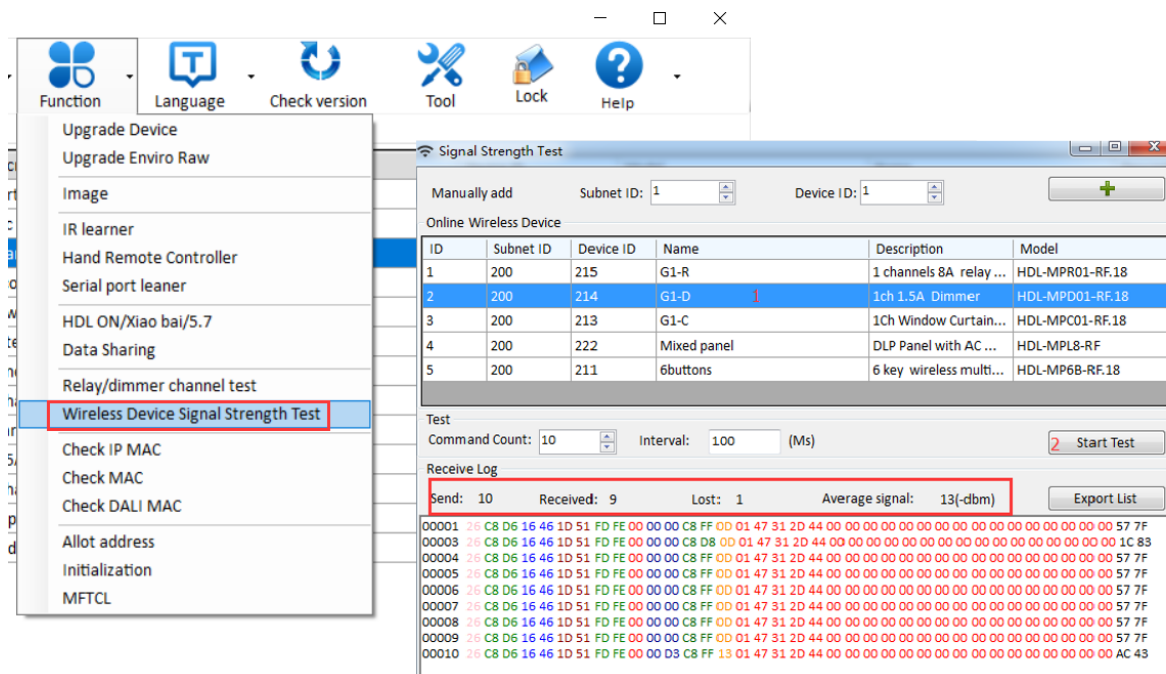
Fast test the relay/dimming channel, and modify its remark.



- 1- Fill in the address and channel of module.
- 2- Start test.
- 3- Modify remark for channel.
- 4- Stop test or turn off load.

## 14 Wireless Device Signal Strength Test

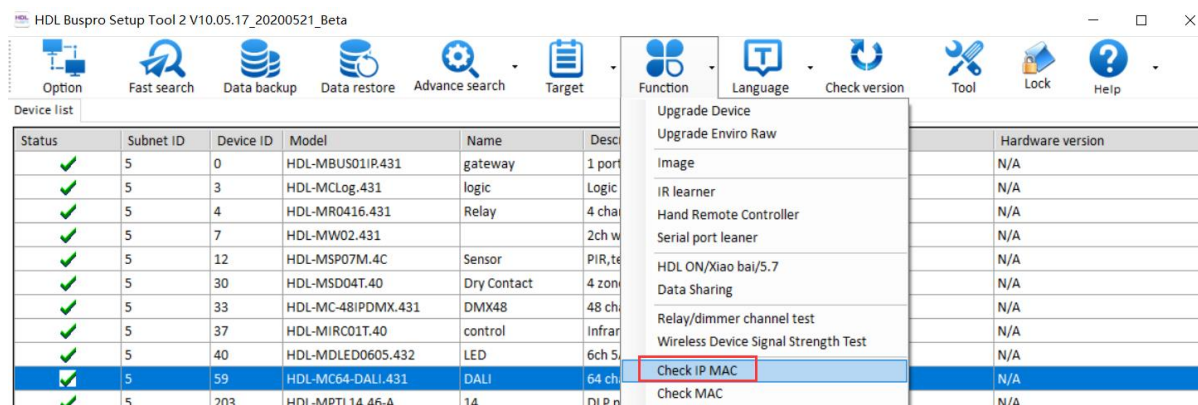
This tool can test the wireless device's signal strength. Search the online wireless devices first, and then go to 'Wireless Device Signal Strength Test' page to test.



- 1- Search all wireless devices.
- 2- Start Test, then it will show how many signal it received or lost.

## 15 Check IP MAC

Check the IP information for all gateways which in local network.

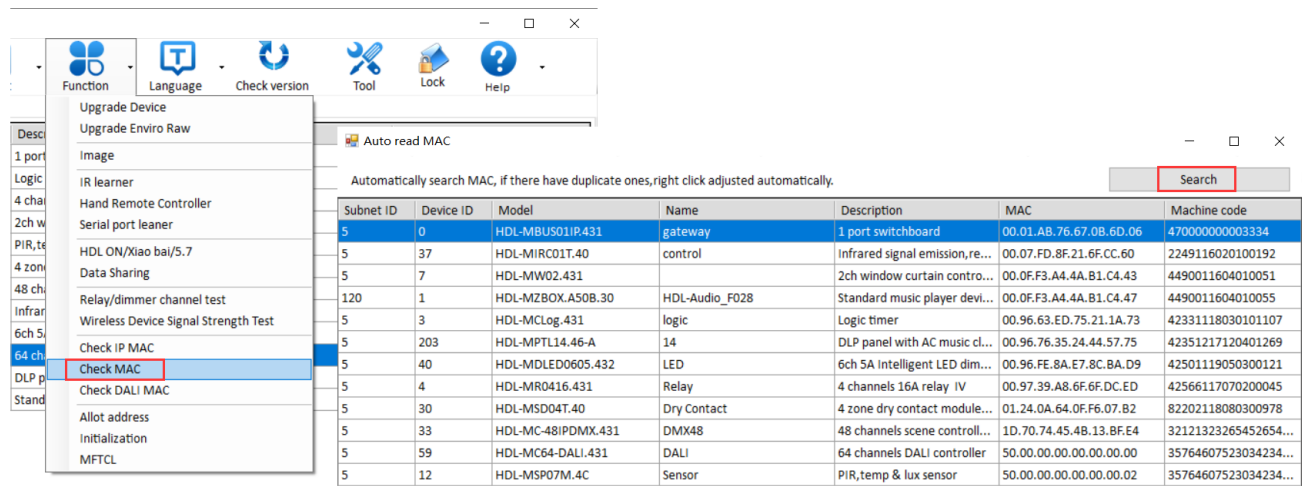


## 16 Check MAC

Check all devices' MAC which in Device list.

If same devices in same MAC, you can right click it and select Auto modify MAC.

Device's MAC must be unique in project.



## 17 Check DALI MAC

Function -- Check DALI MAC.

Check DALI MAC is for special project.

## 18 Allot address

Function – Allot address.

All HDL devices' default address is Subnet ID 1 Device ID5, we need to modify address before you use it.

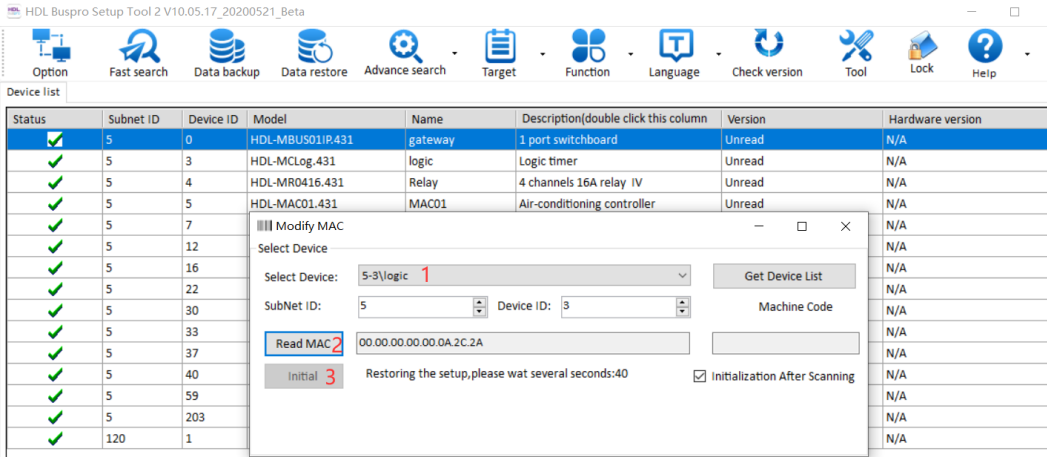
In new project, we can use Allot Address function to modify all devices' address. But in project which you program before, pls do not use this Allot Address function.



## 19 Initialization

Function – Initialization.

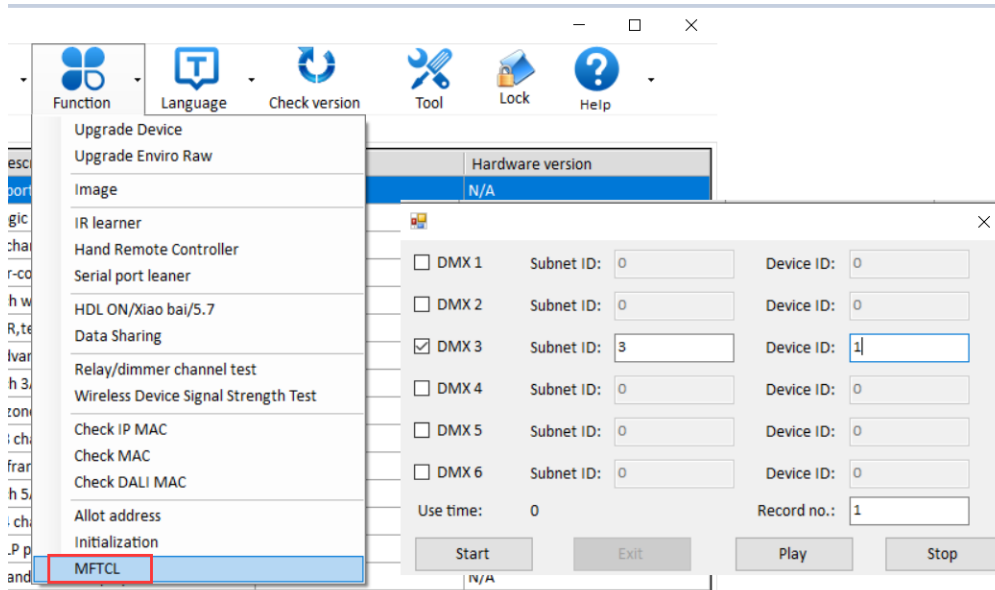
Initialization the device, means clean all setting data inside module.



- 1- Search the devices first, and then select the device which need initialize.
- 2- Read its MAC.
- 3- Click Initial.

## 20 MFTCL

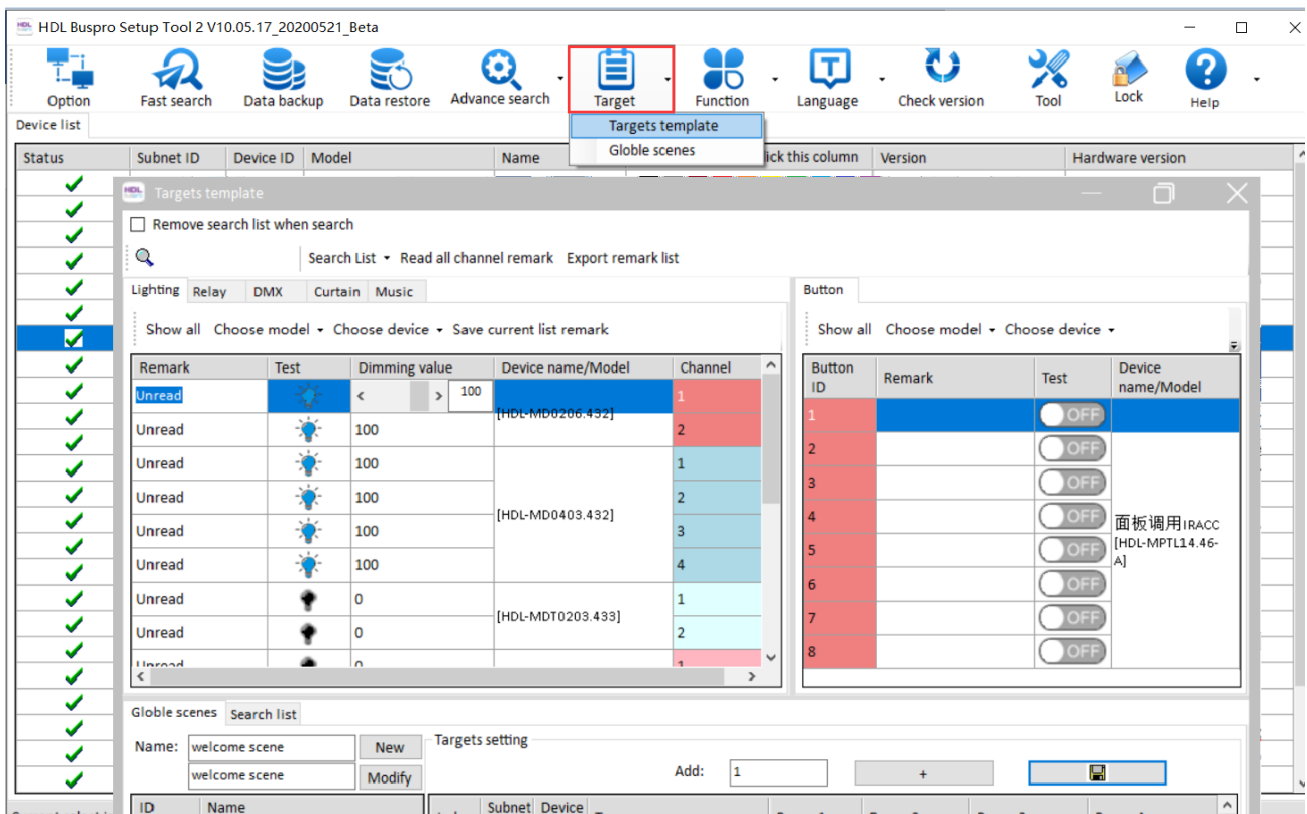
This is for DMX recorder module to record the DMX signal and then save as file.



- 1- Fill in the address of DMX recorder.
- 2- Click Start to select the path for save file.
- 3- Click 'Play' to start, and click 'Stop' to stop record.

## 21 Target

We can program devices target after enter to module, or we can program all devices target in current page. Drag the lighting target to panel directly.

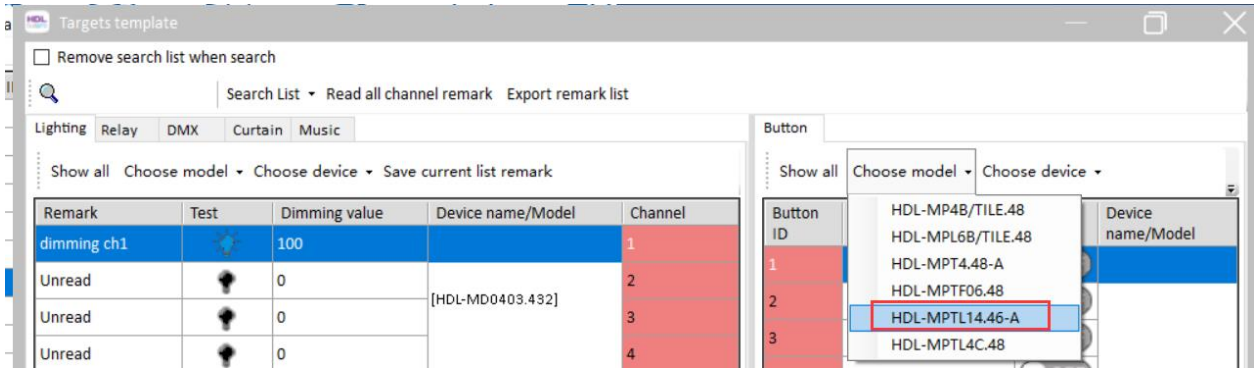


### 21.1 Targets Template

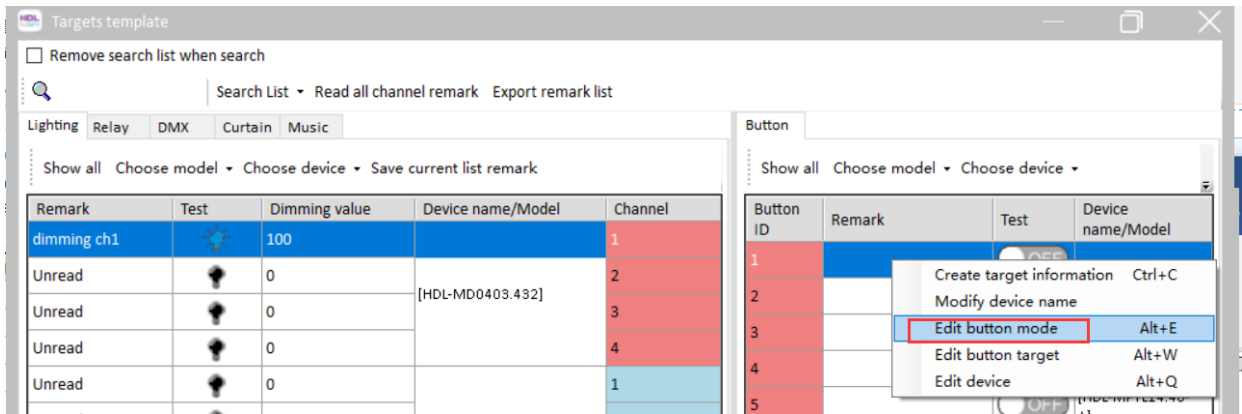
Take DLP control dimmer channel as example:

- 1- Fast Search all devices first;
- 2- In Targets Template page, in 'Button' area, select the panel which you want to control dimming channel.

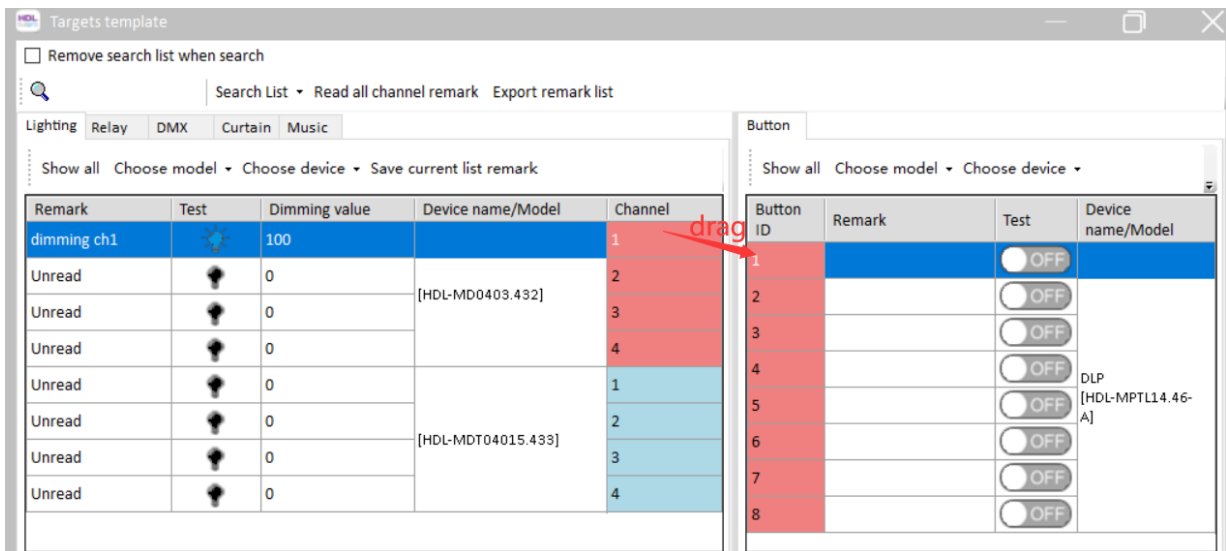




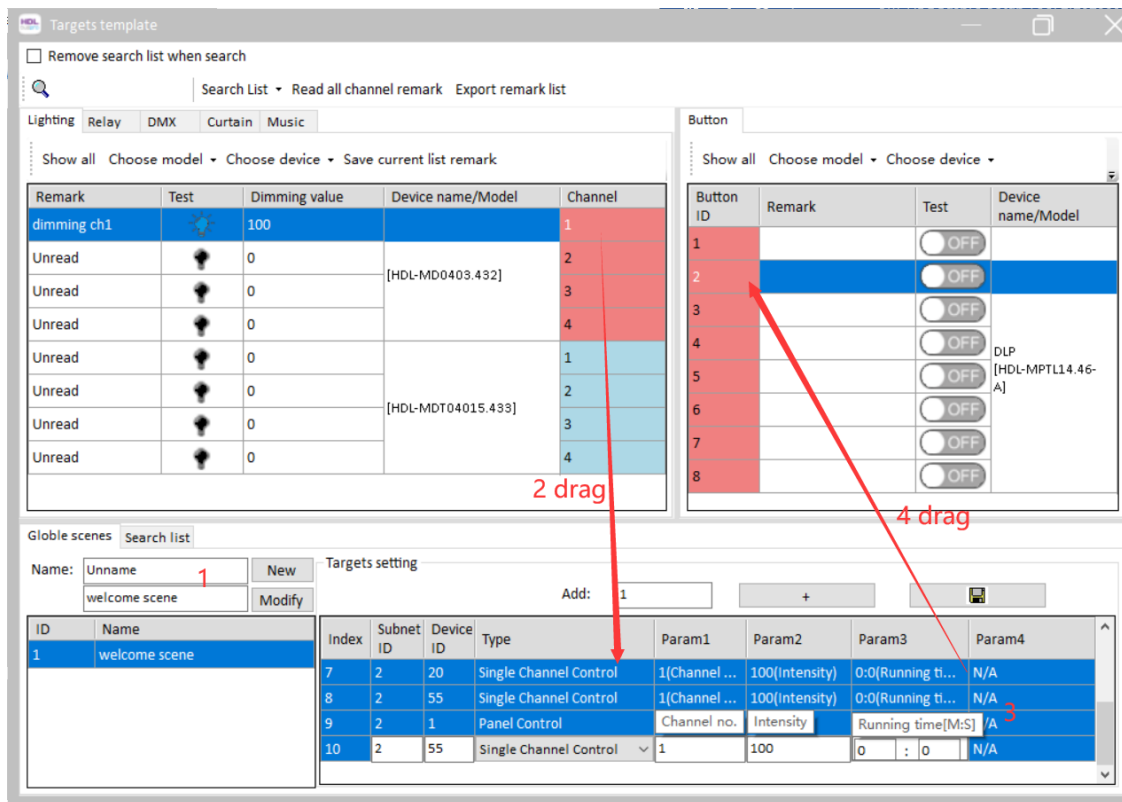
3- Right click the button, modify the button mode first.



4- Drag the dimming channel to button1. Means button1 control this dimmer channel1.



If one button controls more targets, we can set the Global scenes.



- 1- Create the name for Global scenes, like 'welcome scene'.
- 2- Drag the lighting to this scene.
- 3- Select all targets in current scene.
- 4- Drag the targets to button2.

## 21.2 Global scenes

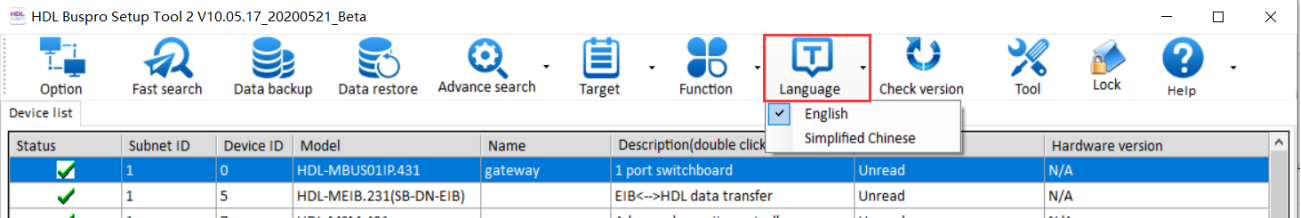
Target – Global scene.

You can check the devices' target in this Global Scenes page. Or modify the targets again.

Global scenes		DLP panel with AC music clock floor heating								Channel count:4		Read current level		Save	
ID	Remark	Mode	Index	Subnet ID	Device ID	Type	Param1	Param2	Param3	Param4	Device	Chn	Channel remark	Level	Output on site
1		Single ON/OFF	1	16	0	Music Control	Play Control	Stop	N/A	N/A	2-55\	1		< >	100
2		Combination ON	2	2	20	Single Channel Control	1(Channel no.)	100(Intensity)	0:0(Running...	Enable	2-55\	2		< >	100
3		Invalid	3	2	20	Single Channel Control	2(Channel no.)	100(Intensity)	0:0(Running...	Enable	2-55\	3		< >	100
4		Invalid	4	2	55	Single Channel Control	1(Channel no.)	100(Intensity)	0:0(Running...	Enable	2-55\	4		< >	100
5		Invalid	5	2	55	Single Channel Control	2(Channel no.)	100(Intensity)	0:0(Running...	Enable					
6		Invalid	6	2	55	Single Channel Control	3(Channel no.)	100(Intensity)	0:0(Running...	Enable					
7		Invalid	7	2	55	Single Channel Control	4(Channel no.)	100(Intensity)	0:0(Running...	Enable					
8		Invalid	8	2	20	Single Channel Control	1(Channel no.)	100(Intensity)	0:0(Running...	Enable					
9		Invalid	9	2	55	Single Channel Control	1(Channel no.)	100(Intensity)	0:0(Running...	Enable					
10		Invalid	10	2	1	Panel Control	Control button	Button1	Valid	N/A					

## 22 Language

This buspro software supports English and Chinese language.



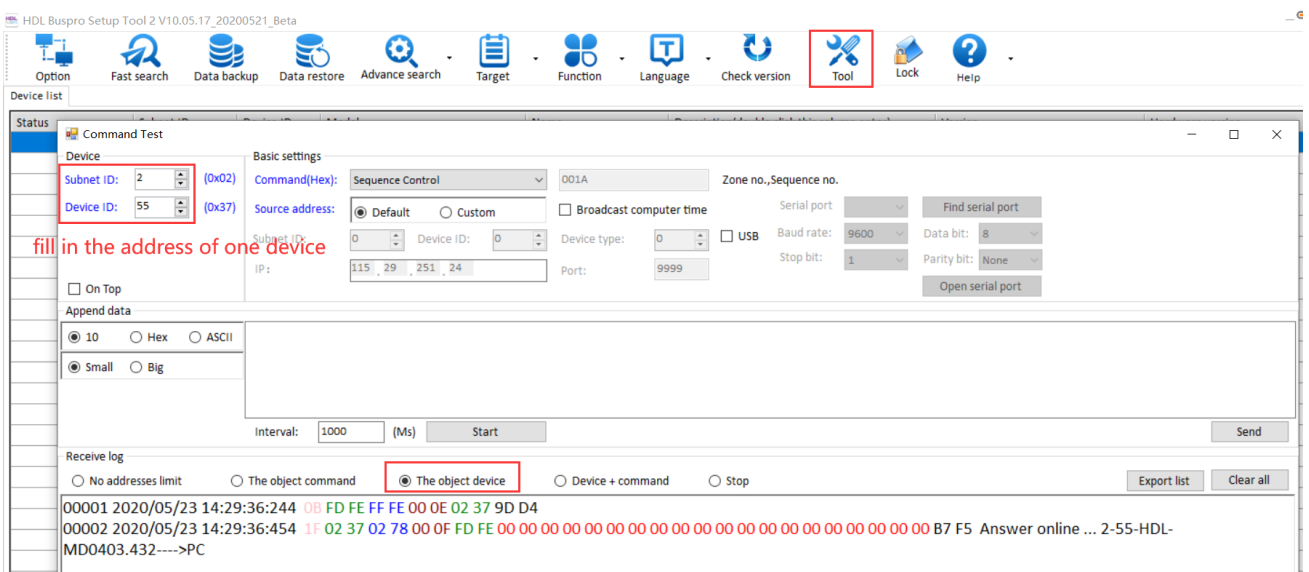
## 22 Check Version

Check the new version online.

## 23 Tool

This Tool page is use to monitor the command, used for check problem.

If just want to monitor the command about one device, you can fill in this device's address, and then select 'The Object Device'.



## 24 Lock

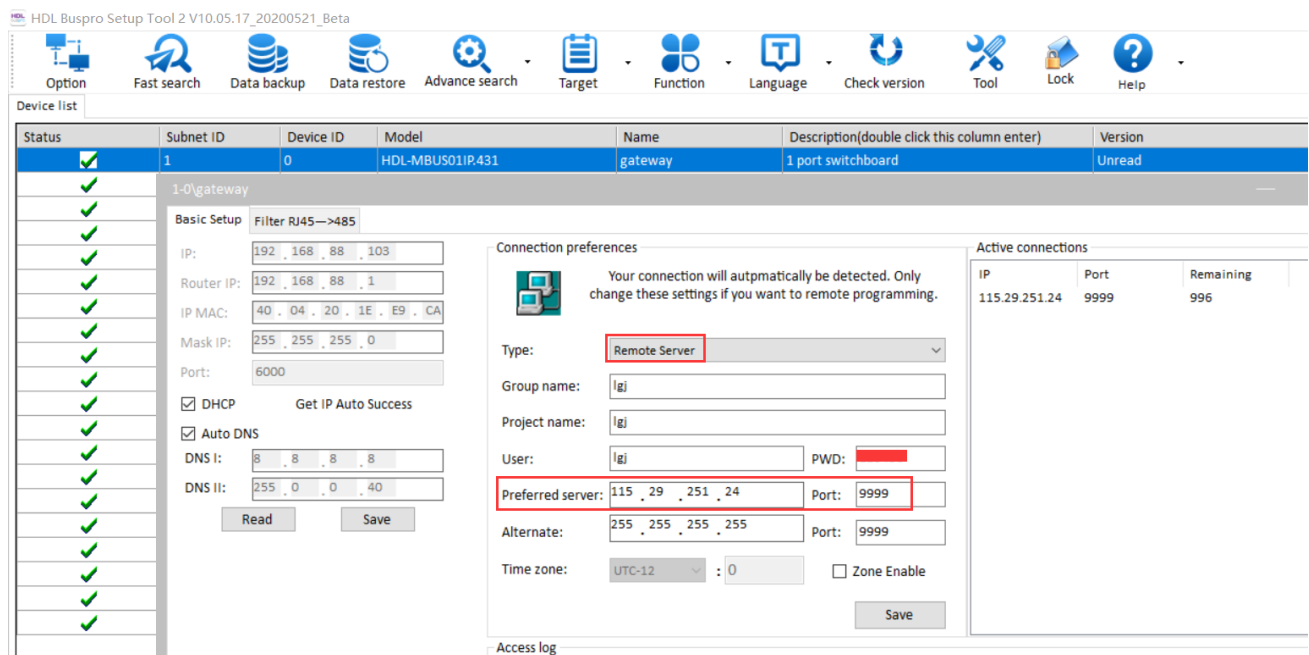
This lock is for gateway’s local encryption. When lock the gateway, you need to type in gateway password before access the gateway.

**Notice:** The gateway must be upgraded the new firmware which have MQTT function.

## 25 Remote Access

If the gateway was enable the Remote Server function, then we can use buspro software to remote access that project.

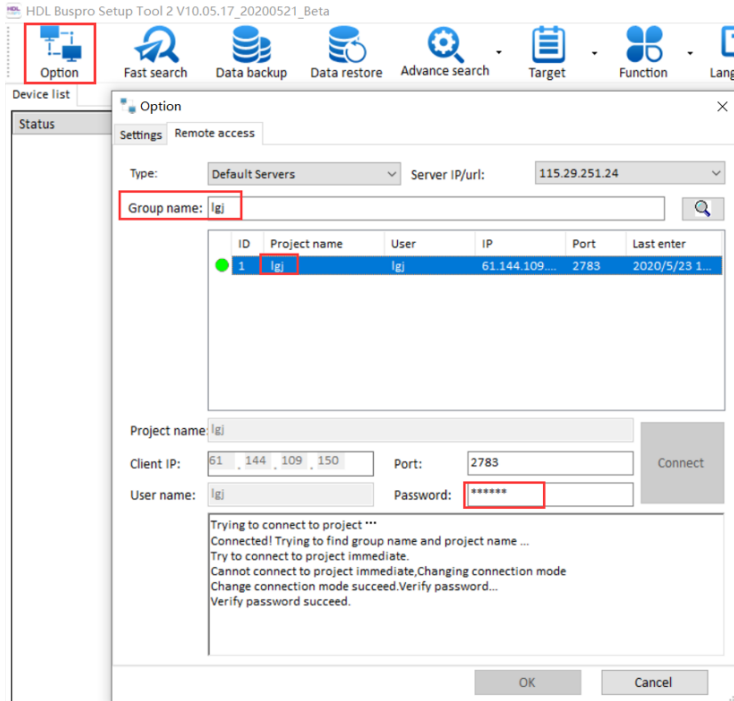
Enable Remote Access function in gateway: (take HDL-MBUS01IP.431 as an example)



- 1- HDL-MBUS01IP.431 must be connected to internet.
- 2- In HDL-MBUS01IP.431, select Remote Server and fill in project/group/user name and password.
- 3- Fill in HDL server IP (115.29.251.24) and port (9999).

## HOW TO REMOTE ACCESS THE PROJECT?

- 1- Go to Remote Access page, and fill in your group name, find your project, fill in password.



- 2- Click 'Connect' button, connect to that project.
- 3- Exit 'Option' page, Click Fast search, search the device in that project.

### Notice:

- 1: If the project show black icon, means the project not online, you need to check the network or gateway settings in local.
- 2: Before you go to 'Remote Access' page, you need to check the IP of buspro software in 'Settings' page, must select one IP which has internet.

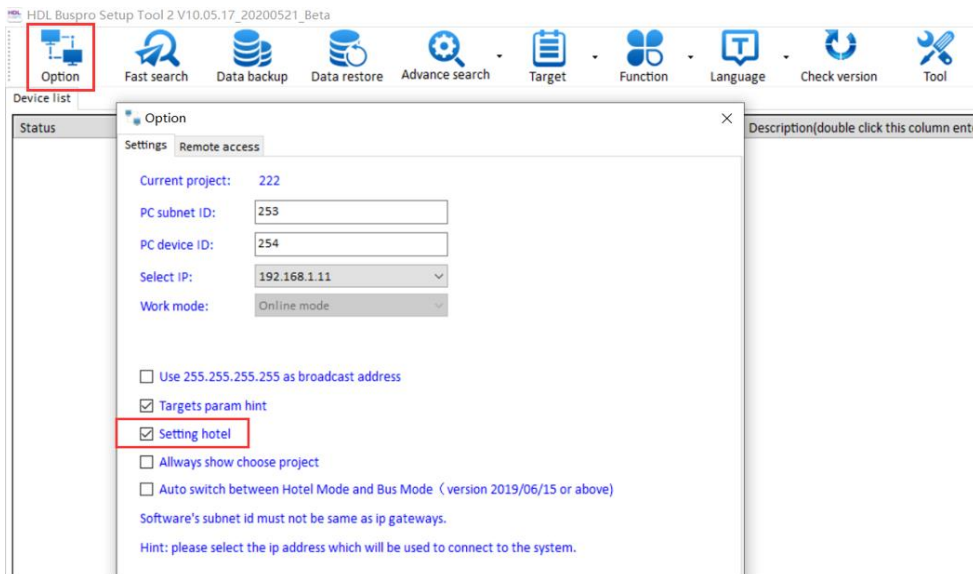
## 26 Hotel mode

Buspro software can use to search/program hotel host module, like RCU.

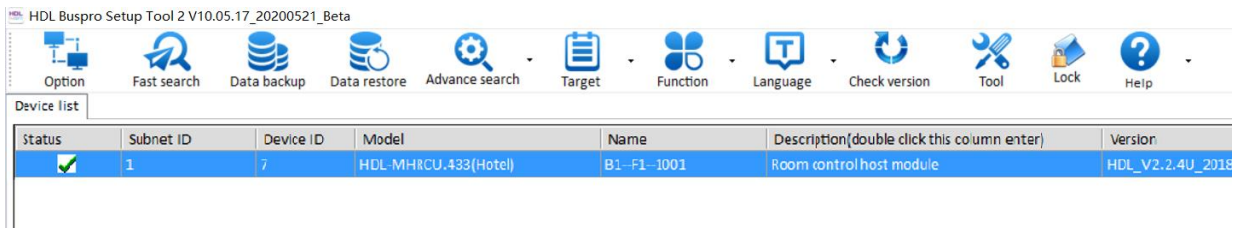
For more detail settings, pls refer to hotel module’s user manual.

### 26.1 Search hotel host module

1- Enable hotel mode in buspro software.



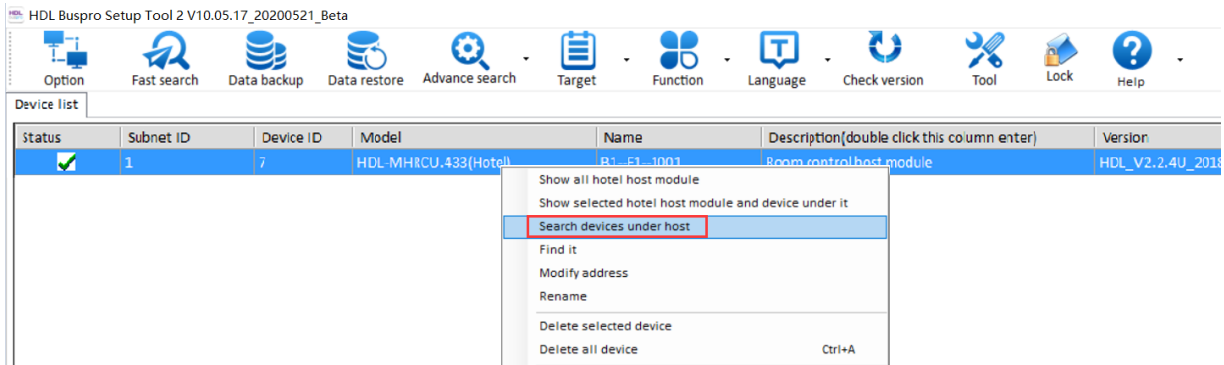
2- Fast search hotel host module



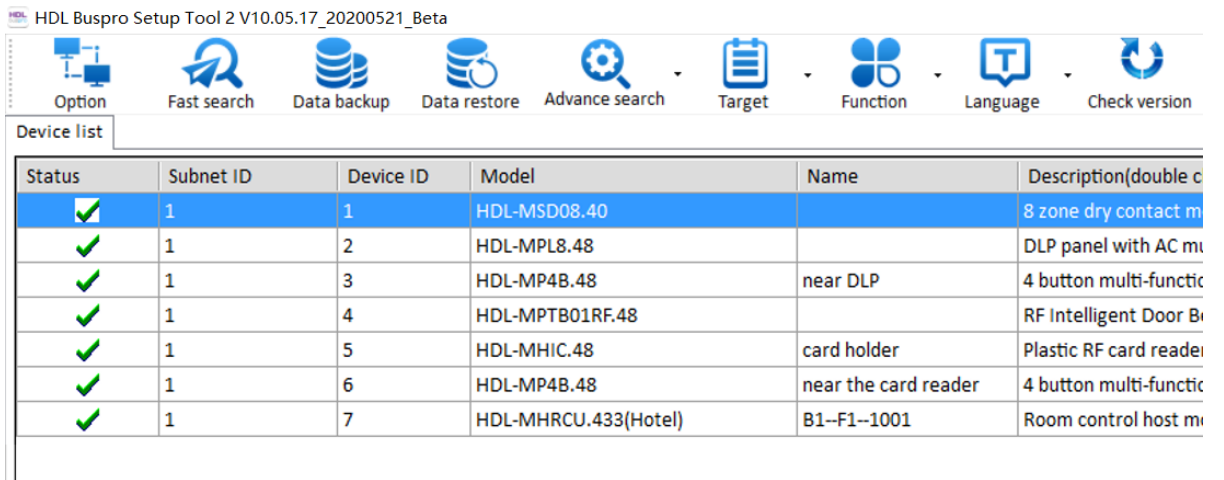
### 26.2 Search devices under host module

Buspro software can program the normal devices which under host module, means the hotel host module is one gateway, we can program the doorbell panel/card reader panel/button panel via host module.

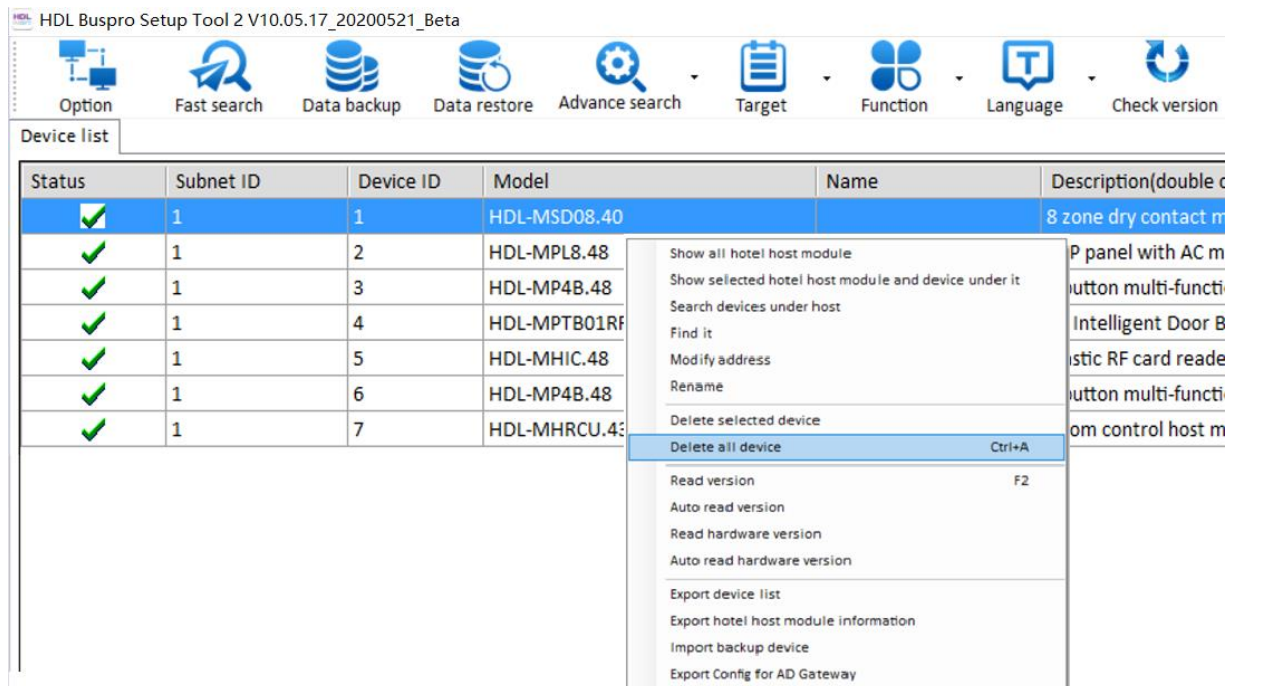
1- After search the host module, right click it, select ‘Search devices under host.’



2- Like this.



### 26.3 Other settings in Hotel mode



- Show all hotel host module: Show all hotel host module, hide the devices under host module.
- Show selected hotel host module and device under it: Show selected hotel host module and device under it.
- Search devices under host: Search devices which under selected host module.
- Find it: After clicked it, will help you find it fast. Some old firmware not support this.
- Modify address: Modify current device's address.
- Rename: Rename current device.
- Delete selected device: Delete selected device in Device list.
- Delete all device: Delete all device in Device list.
- Read version: Read selected device's firmware version.
- Auto read version: Auto read all devices' firmware version.
- Read hardware version: Read selected device's hardware version.
- Auto read hardware version: Auto read all devices' hardware version.
- Export device list: Export current device list as excel file.
- Export hotel host module information: Export current hotel host module's information.
- Import backup device: Import backup file, check the settings in backup file.
- Export Config for AD gateway: Export the configuration of AD gateway.