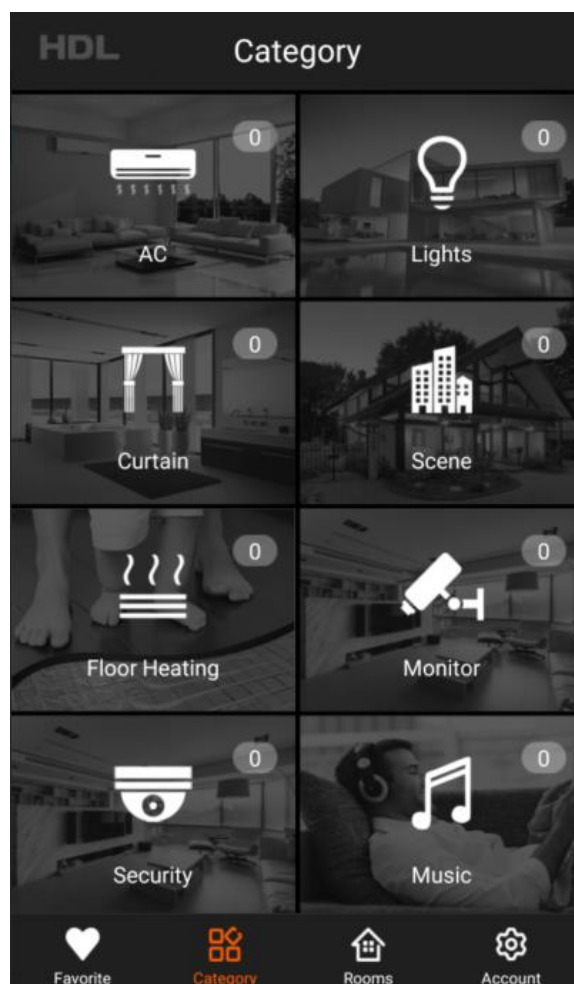




User Manual

HDL ON



buspro

www.hdlautomation.com

INDEX

1 Overview	3
1.1 General Information	3
1.2 System Connection.....	3
2 System Configuration	3
2.1 Register Account.....	4
2.2 Add Area and Binding MAC	7
2.3 Search Gateway	9
2.4 Program Device	12
2.4.1 Relay.....	13
2.4.2 Dimmer.....	15
2.4.3 48 Channel DMX Controller.....	15
2.4.4 DALI Module	17
2.4.5 DLP Panel	18
2.4.6 Air Condition.....	21
2.4.7 Music Player.....	22
2.4.8 Curtain Module	24
2.4.9 IR Control	25
2.4.10 Floor Heating.....	34
2.4.11 Dry Contact.....	36
2.4.12 Fan.....	37

2.4.13 Camera	38
2.4.14 Air Quality Sensor.....	41
2.4.15 Security	43
2.4.16 Universal Device	46
2.5 Room Setup	48
3 Scenes	49
4 Remote Access	52
5 Delete All Project Data	54
6 Backup List.....	54
7 Alarm.....	56
8 Upload Data	60
9 NOTES.....	63
9.1 APP Download.....	63
9.2 Supported Device and Firmware Version	63

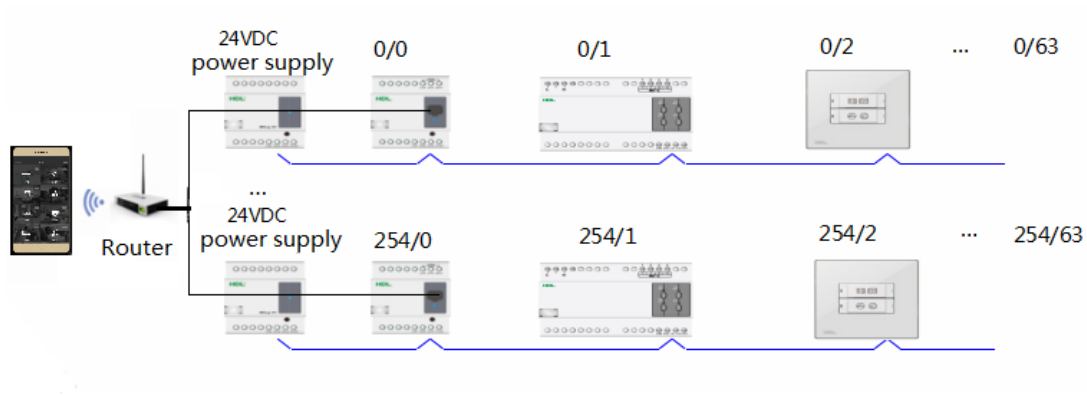
1 Overview

1.1 General Information

HDL ON is a user interface application developed by HDL for HDL Buspro devices. It's an advanced home automation and remote access app, which allows cell phones (IOS and Android) to be used as a user interface to control and program HDL devices.

1.2 System Connection

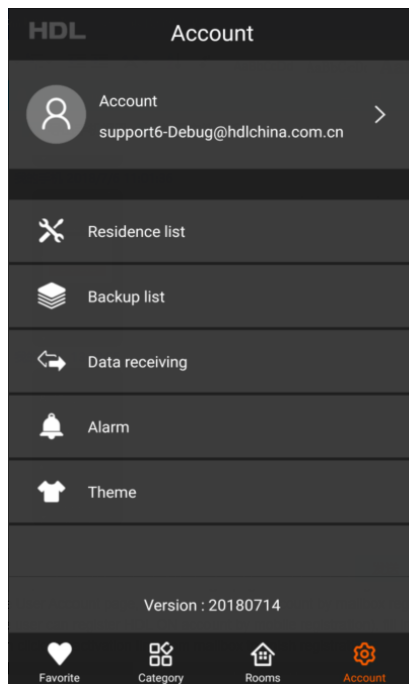
Please follow the wiring showed below strictly.



This is the basic method of controlling the HDL Buspro system by HDL ON, we can search and program the system devices by connecting the phone and the system in the same local area network (WIFI).

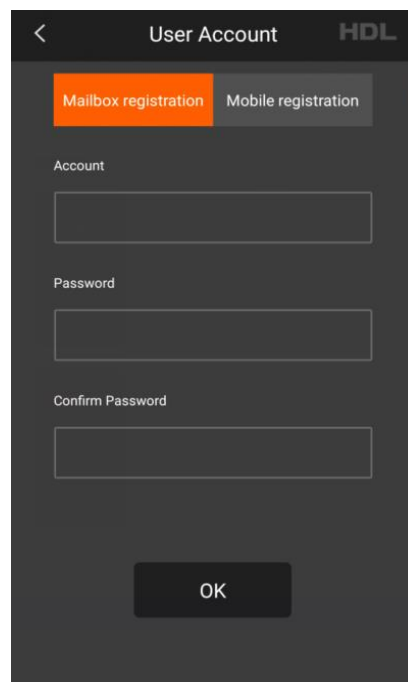
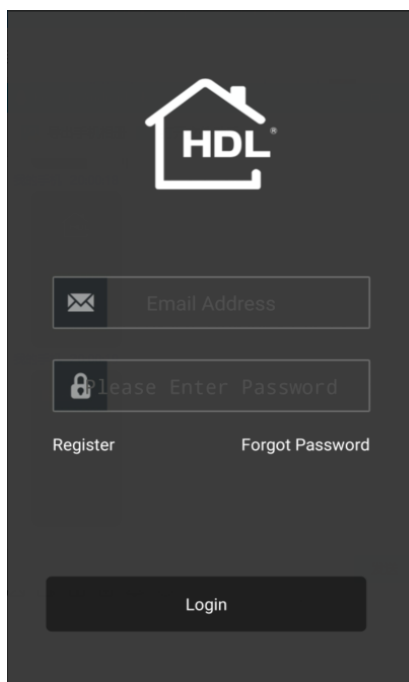
2 System Configuration

Before using HDL ON application, you need to create an account, enter the residence list page, bind the MAC of IP module with residence, search for the gateway device. And then search every device through the gateway device, at last, create the room and distribute the device to corresponding room.



2.1 Register Account

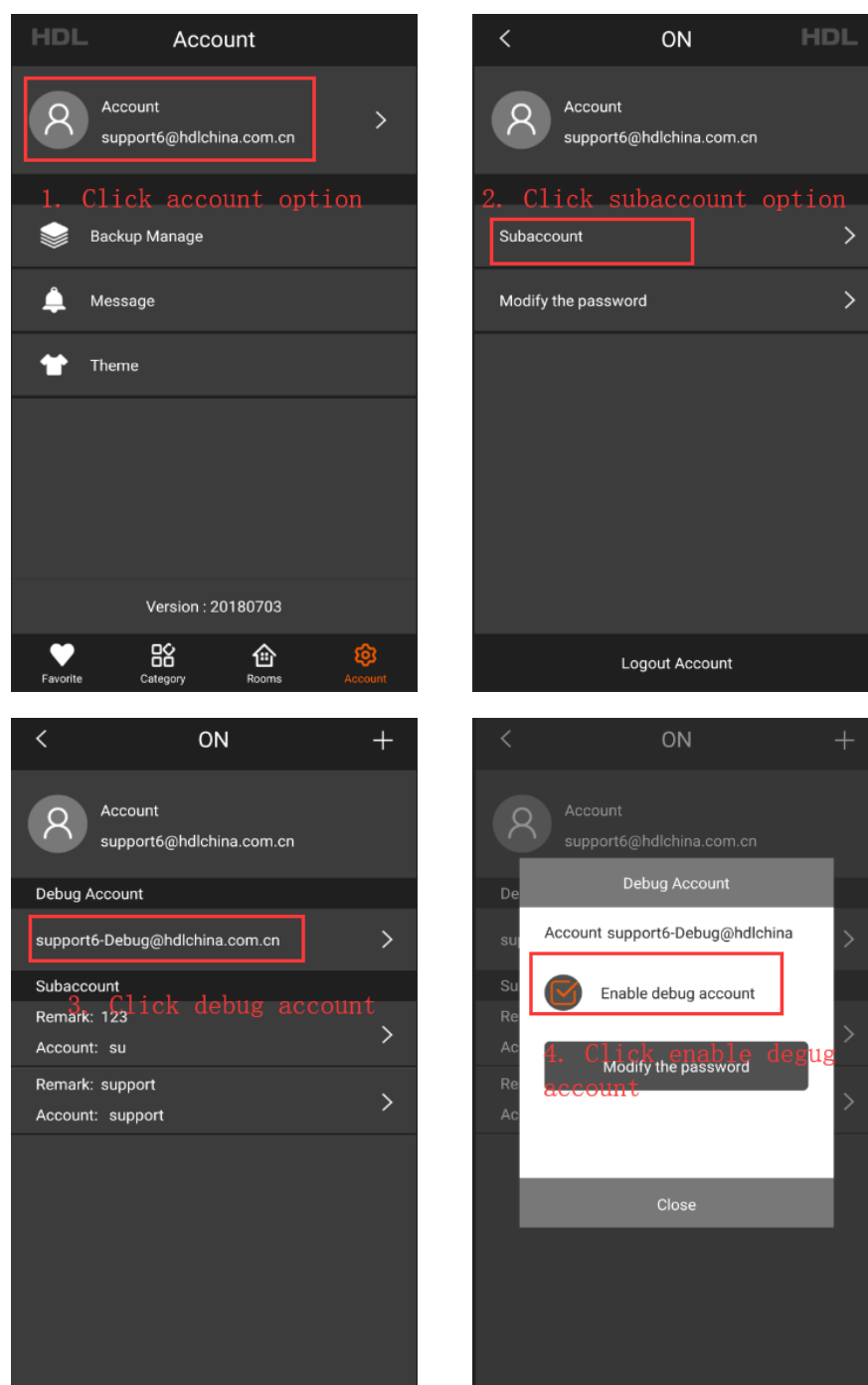
We need to register an HDL ON account when we use the HDL ON for the first time. When we open the APP, we will enter the account login page first. Touch “Register” button and then enter the User Account page, we can register an account by mailbox registration (only Chinese user can register HDL ON account by mobile registration), fill in the user message then click the activation link from mailbox to finish registration.



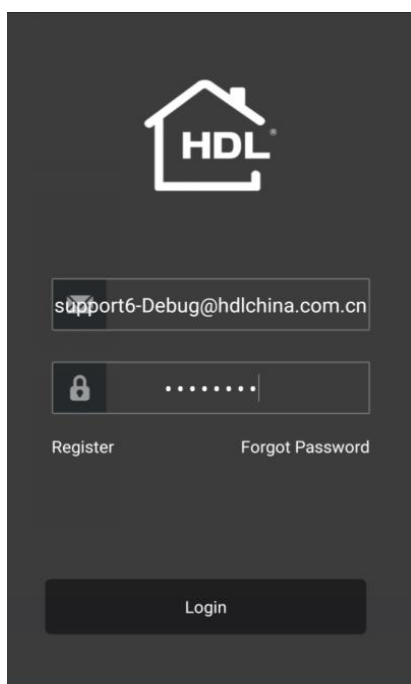
The account we register from mailbox is the main account, we also can create the debug account and subaccount.

Debug account: If we want to configure the device, need to login the debug account.

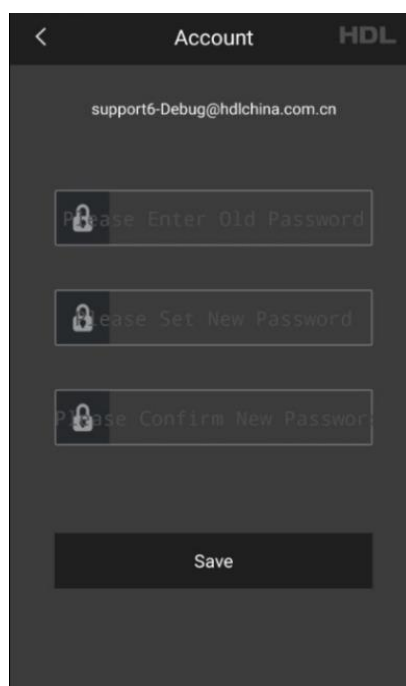
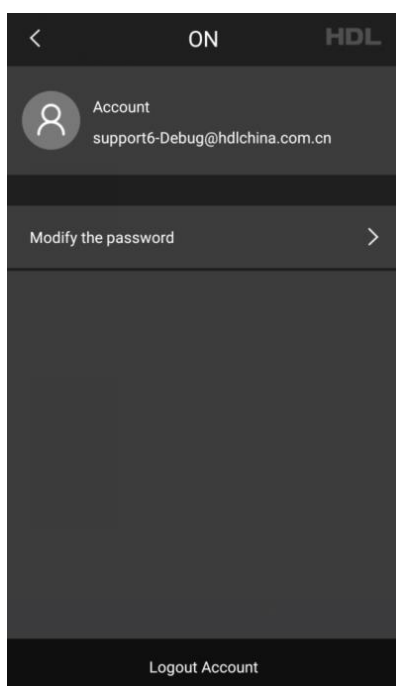
1. Enter the account page, Enable the debug account function.



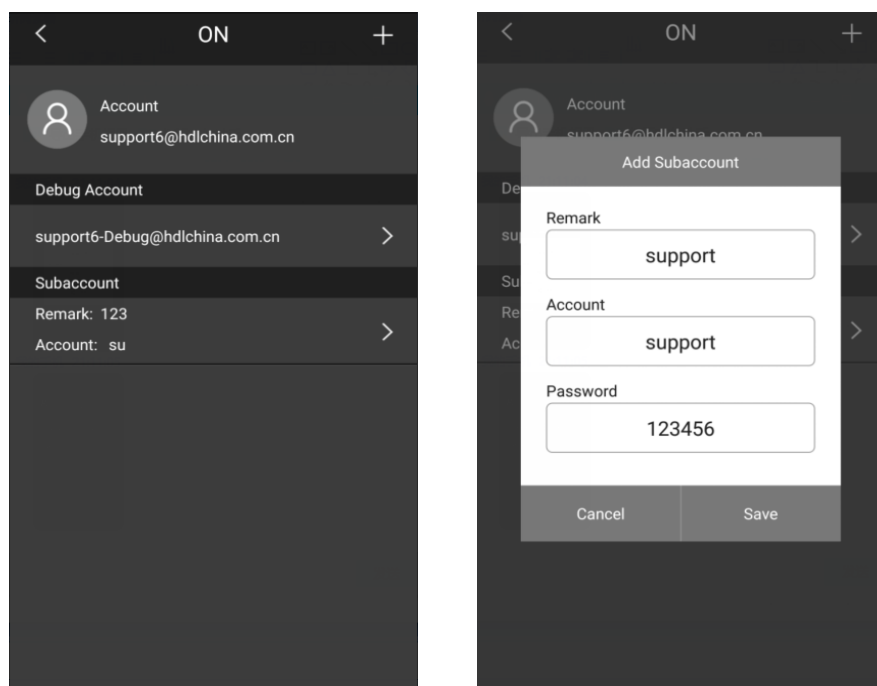
2. Login the debug account after logout the main account, if you login the debug account for the first time, should login the debug account with password "85521566".



3. After login the account, you can modify the debug account password from account page.

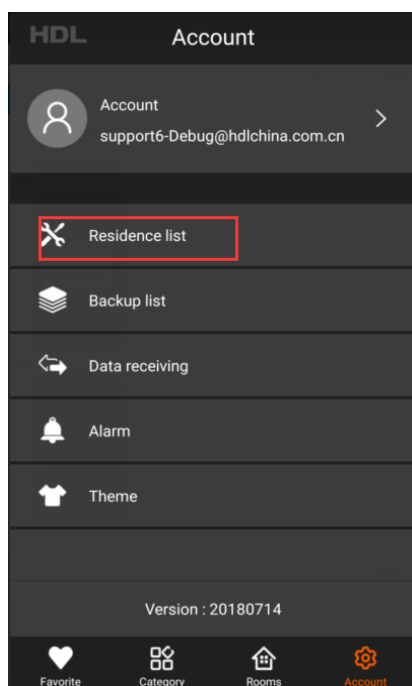


Subaccount: The main account can distribute the subaccount to the other people. After the debug account backup the data to HDL cloud, subaccount can restore the data to the phone. A main account can create many subaccount, there is no limitation for the numbers of subaccount.



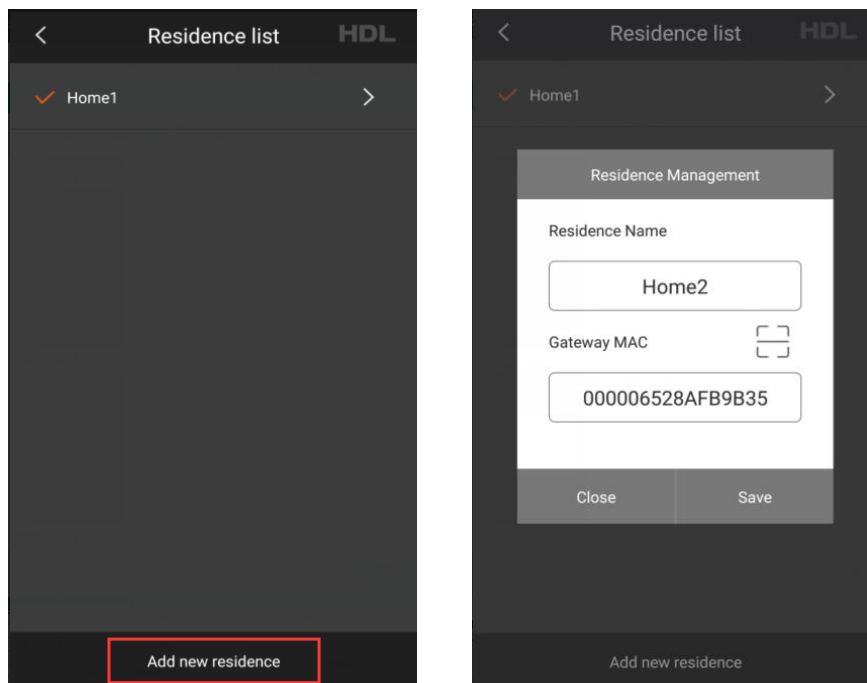
2.2 Add Area and Binding MAC

If we want to search the devices connected to the IP module, need to bind the MAC address of IP module to the residence first. We can touch residence list button in the account page, then go to the gateway page.



Touch the “Add new residence”, fill in the residence name and the MAC address of the IP

gateway and save. In this HDL ON version, we can manage several residences in one account. For example, if we want to control 3 residences, we need to create 3 residences and bind the corresponding MAC to the residence.



Attention: one MAC address only can be bound to one account.

We can get the MAC address by 2 kinds of ways.

1. We can double click the subnet ID and device ID area to get the MAC address

us	Subnet ID	Device ID	Model	Name	Description
✓	10	0	HDL-MZBOX.A50B.30	music	Standard m
✓	21	0	HDL-MCIP-RF02.10	Gateway	Mesh node
✓	21	1	HDL-MIR01R-RF.10	200-6	Infrared sig
✓	42	0	HDL-MBUS01IP.431	1 IP	1 port switc
✓	42	1	HDL-MC64-DALI.431	DALI	64 channels
✓	42	2	HDL-MSP01M.431	713-xxxx	temp &
✓	42	3	HDL-MDC		SA lead
✓	42	4	HDL-MDL		SA Inte
✓	42	5	HDL-MPT		panel v
✓	42	6	HDL-MAC		conditio
✓	42	7	HDL-MRC		annels :
✓	42	9	HDL-MC4		channels
✓	42	10	HDL-MSD		or input
✓	42	11	SB-DN-SE		anced si
✓	42	12	HDL-MW02.431	curtain	2ch Window

Double click the subnet ID and device ID, then the MAC will come out

Modify address

Old SubNet ID: 42 Old Device ID: 0

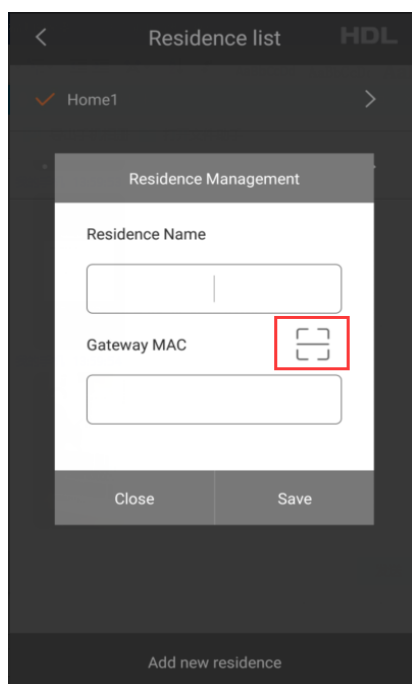
New SubNet ID: 42 New Device ID: 0

Modify Address By MAC

MAC: 00.00.5A.F3.0A.84.5F.00

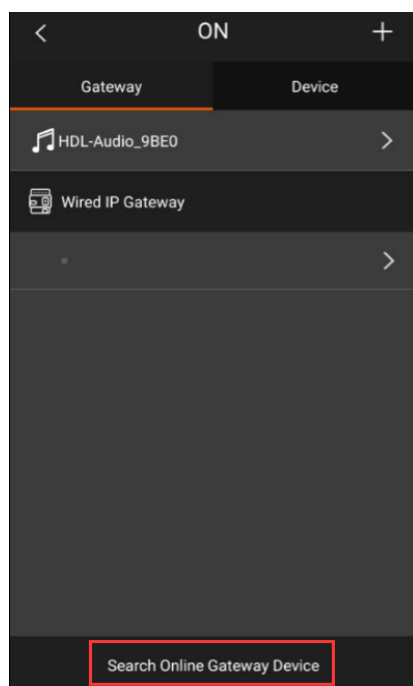
Read MAC Modify address

2. We can scan the fuselage code from the residence management page



2.3 Search Gateway

We can search all the gateway devices in the system (If you want to delete the gateway, you may slide from right to left on the item and click on the red “delete” button when it appears).



Configure gateway: IP module parameter (remarks, subnet ID, network parameter) can

be modified, just need to save it after modify the IP module parameter.

< ON +

Gateway Device

< IP module

Gateway ID: 1

Network Parameters

DHCP: ☒

IP Address: 192.168.10.110

Subnet Mask: 255.255.255.0

Router IP: 192.168.10.1

Remote Access ☒

Refresh

Remote access: Remote project can be created and modified, just save it after that.

< ON +

Gateway Device

Group Name: kevin123

Project Name: kevin123

User Name: kevin123

Password: 123456

Server IP: 115.29.251.24 9999

Alternative Server IP: 0.0.0.0 9999

Save

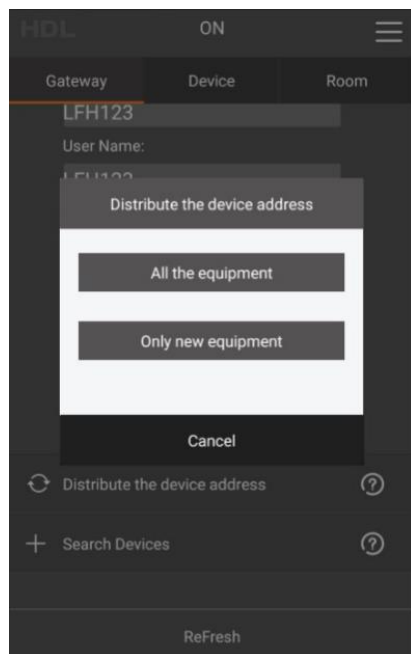
Assign Address for Device

Refresh

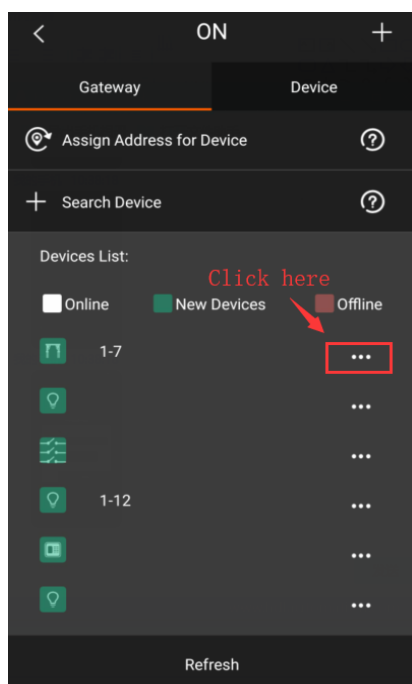
Assign address for device: Redistribute the device ID for each device.

Reassign ID for all devices: Redistribute the device ID for all devices one by one according to the serial number ,for example,1,2,3,4,5,6……

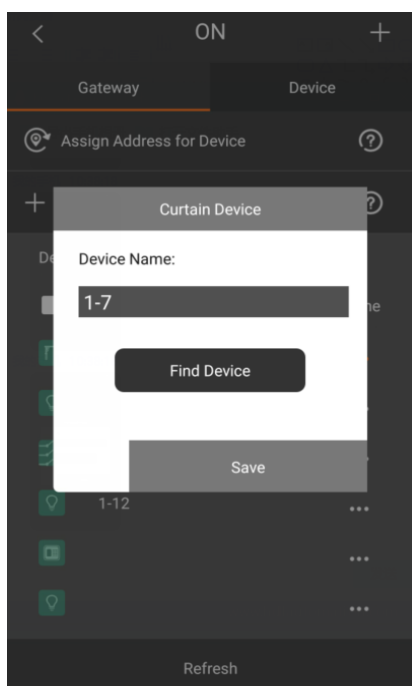
Assign ID for new devices: Distribute the device ID for new added device, if the ID address has vacant position, it will distribute the vacant ID for added device, otherwise, it will distribute the next ID for added device.



Search device: Search the device from the gateway, we can modify the device remarks and position it.

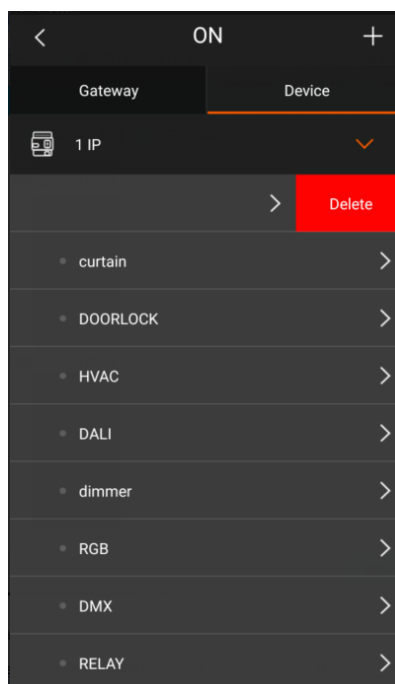
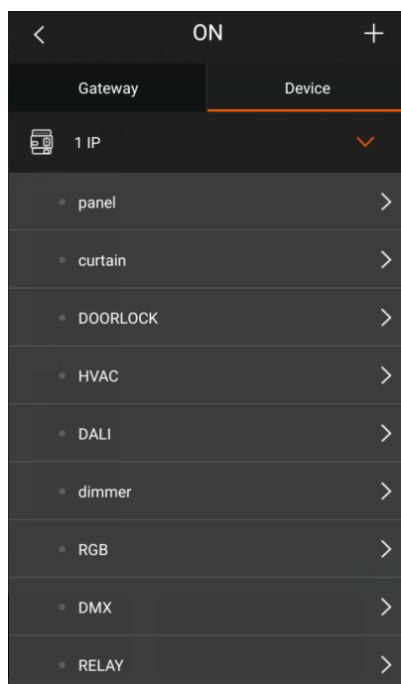


Position: It is used for finding out where the device is. The indicator or the channels of the device will blink for 3 times if we position it.



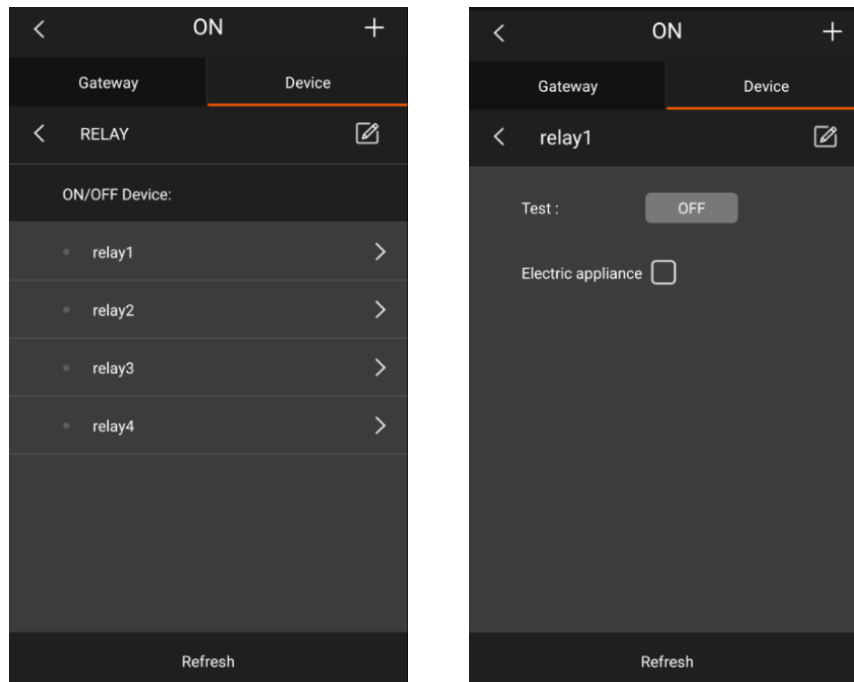
2.4 Program Device

The app shows all the device in the system here (If you want to delete the device, you may slide from right to left on the item, and delete the corresponding device)

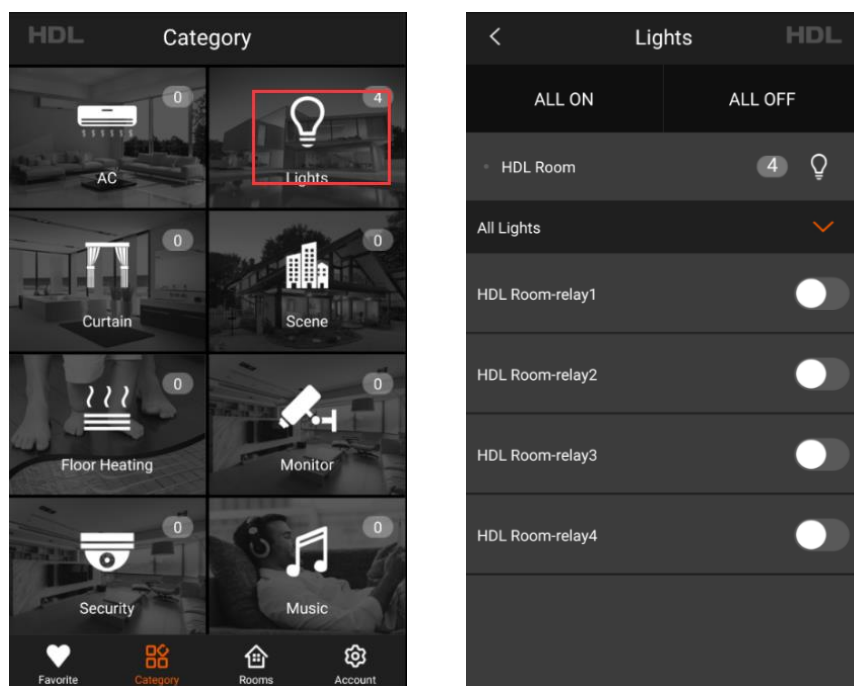


2.4.1 Relay

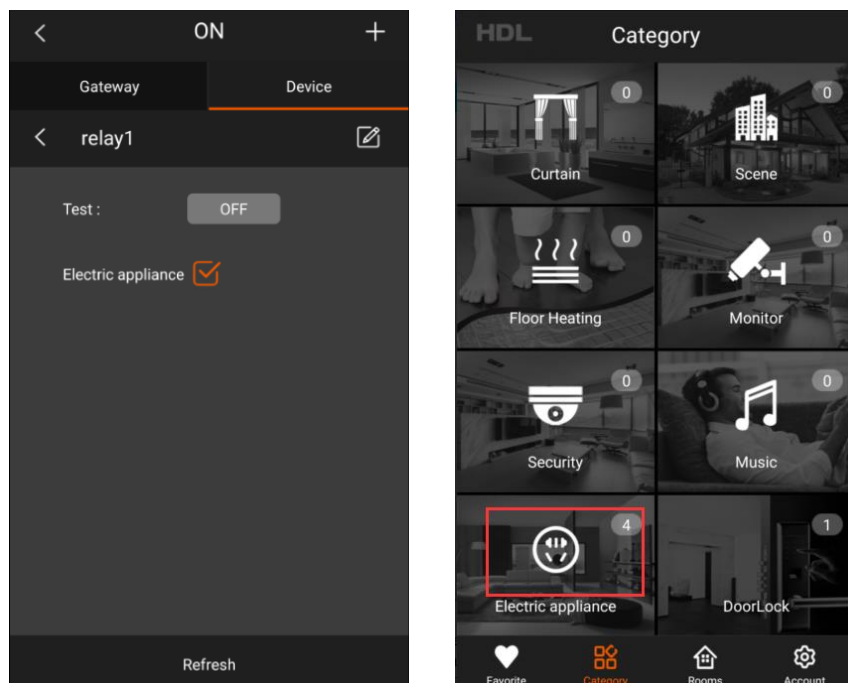
You can test each channel, modify the remark of each channel. If you use the relay to control the lighting, you should uncheck the “Electric appliance ” option, if you use the relay as an electrical switch, you should check the “Electric appliance ” option.



After adding the relay module into a room, you can see the relay module in the user page. Touch the “Lights” icon and enter the lights page, then you can control the relay module here.

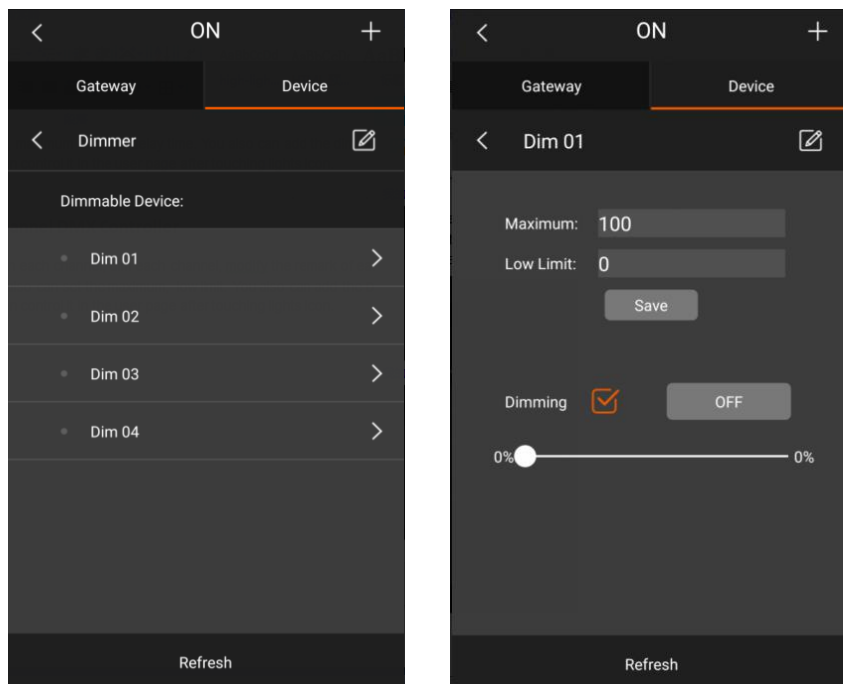


If you set the relay as “Electric appliance” in the device page, after adding the relay module into a room, you can see the electric appliance in the category page. Touch the “Electric appliance” icon and enter the appliance control page, then you can control the relay module as electrical switch here.



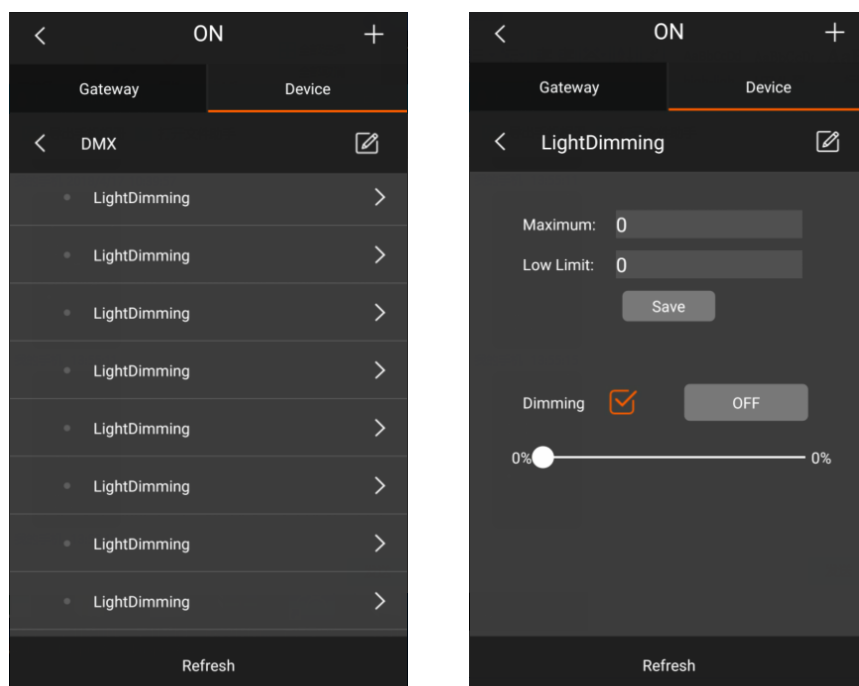
2.4.2 Dimmer

You can test each channel, modify the remark of each channel. Besides, you also can set the low limit and maximum. You also can add the dimmer module to a room, and then control it in the category page after touching lights icon.

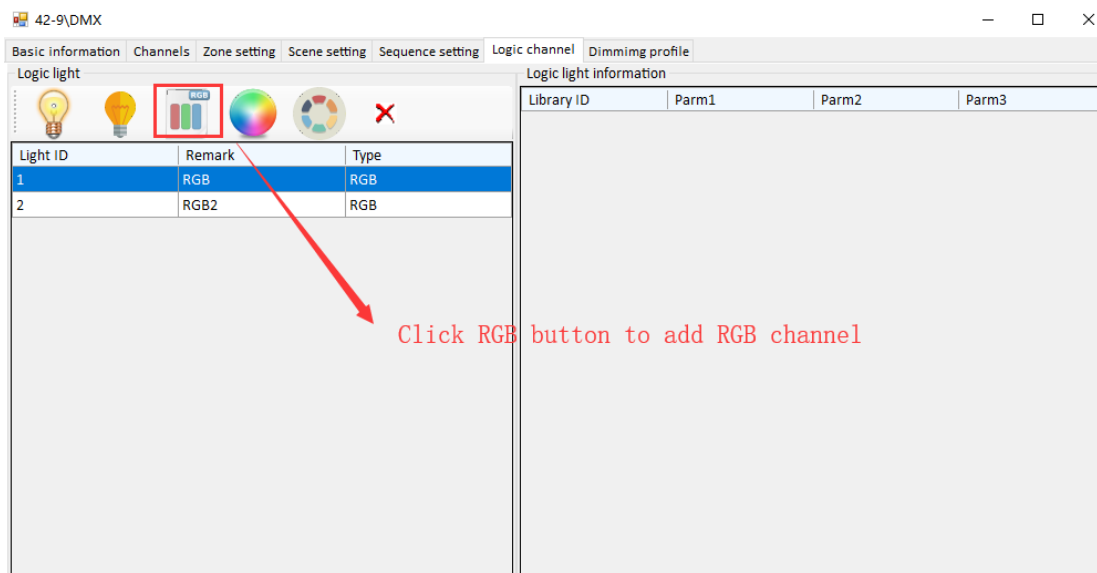


2.4.3 48 Channel DMX Controller

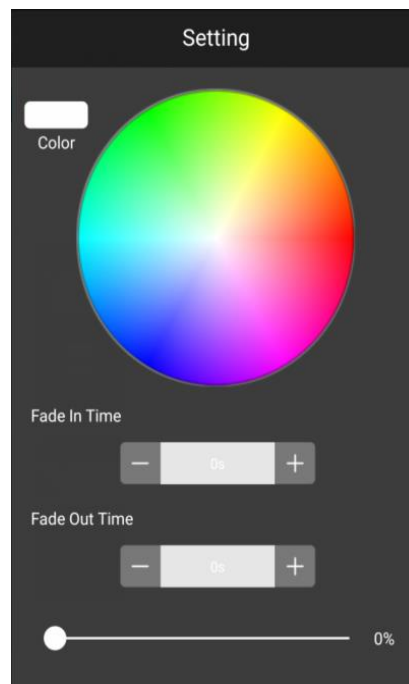
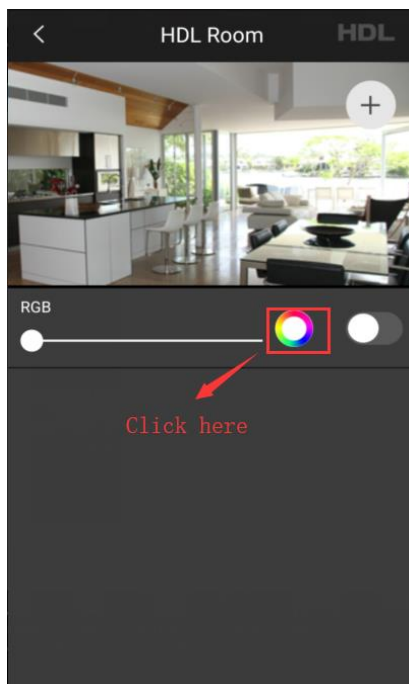
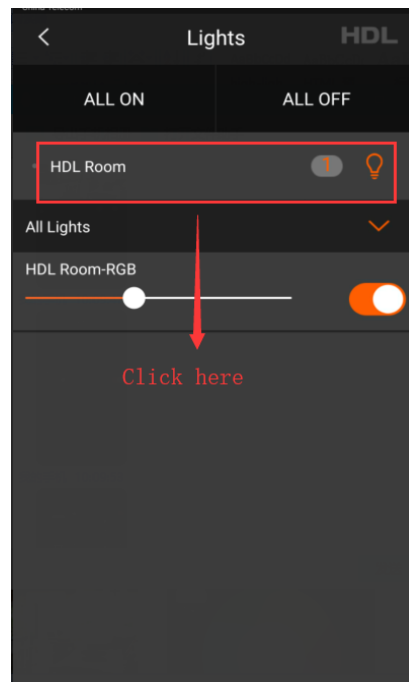
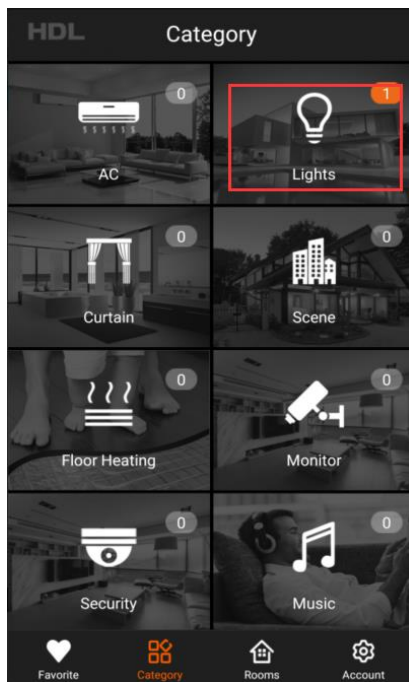
You can switch each channel, dim each channel, modify the remark of each channel. Besides, you also can set the maximum, low limit. You also can add the DMX module to a room, and then control it in the user page after touching lights icon.



For DMX module, we can add RGB channel by clicking RGB button. The RGB index number 1 means the RGB channel is corresponding to channel 1, channel 2 and channel 3 of DMX module, The RGB index number 2 means the RGB channel is corresponding to channel 4, channel 5 and channel 6 of DMX module.

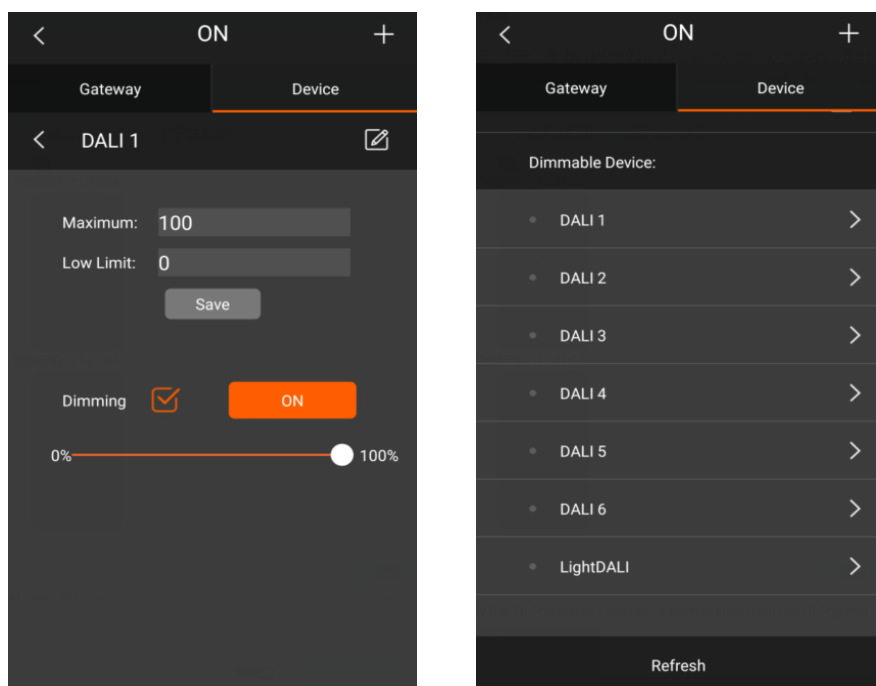


After adding a RGB channel from buspro software, we can search the RGB channel from HDL ON. We can add the RGB channel to a room, then select the color we want in RGB bar from category page.



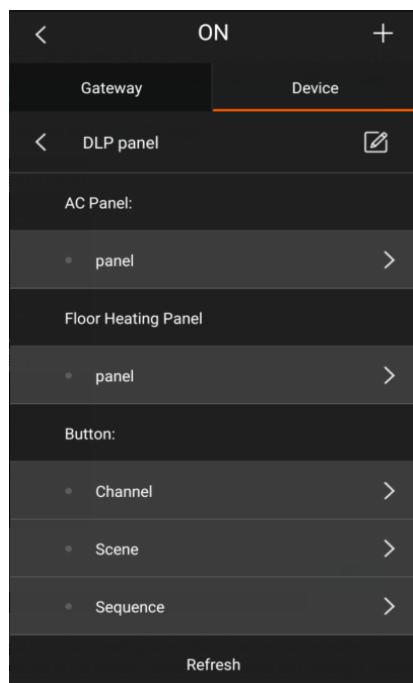
2.4.4 DALI Module

You can test each channel, modify the remark of each channel. Besides, you also can set the low limit and maximum. You also can add the DALI module to a room, and then control it in the category page after touching lights icon.

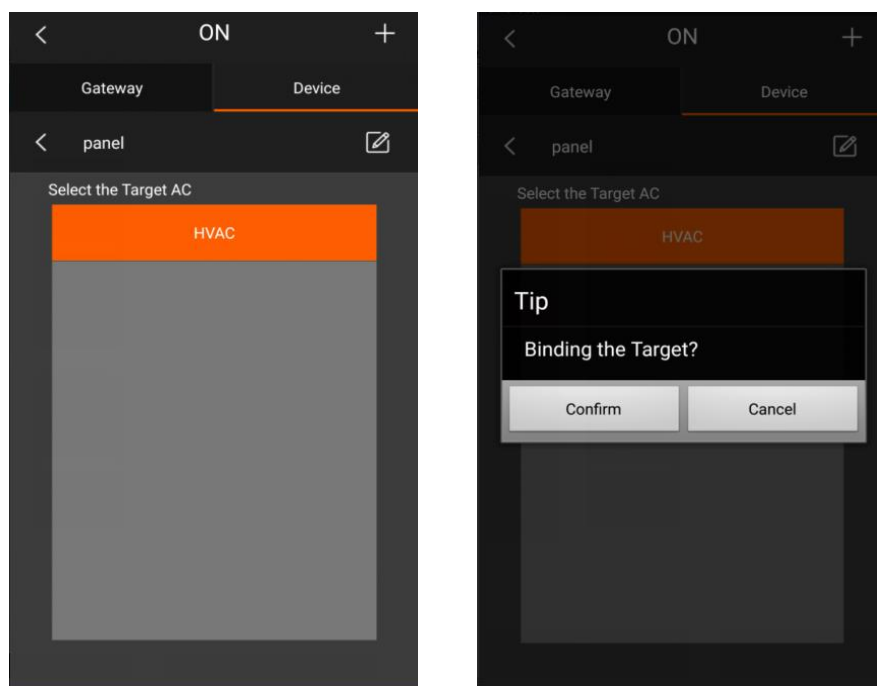


2.4.5 DLP Panel

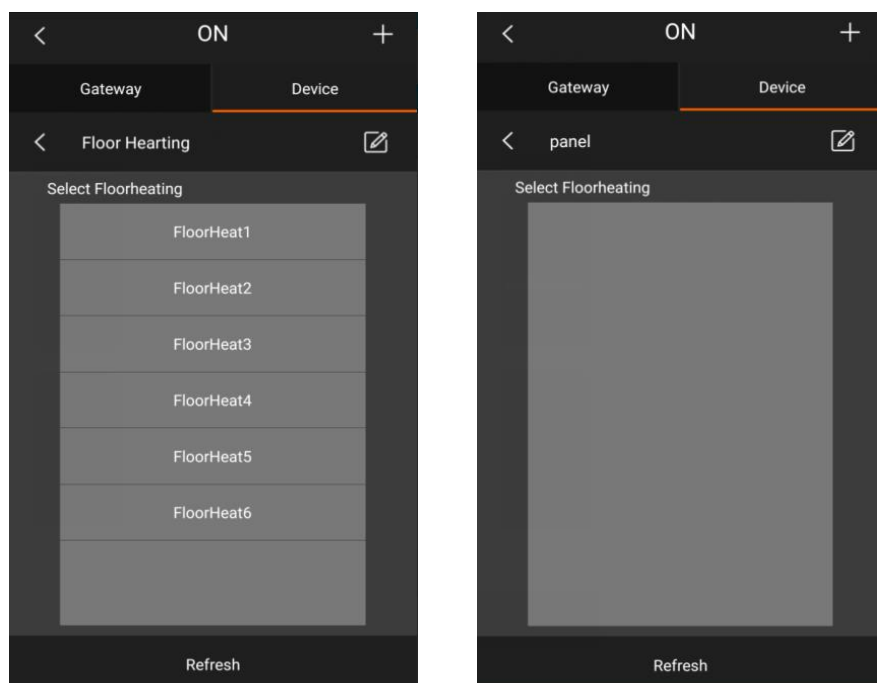
You can modify the DLP remarks, configure each button from the DLP panel.



AC page: Enter the AC page (the AC can be visited only if there are AC modules in the system), choose the device and binding it.

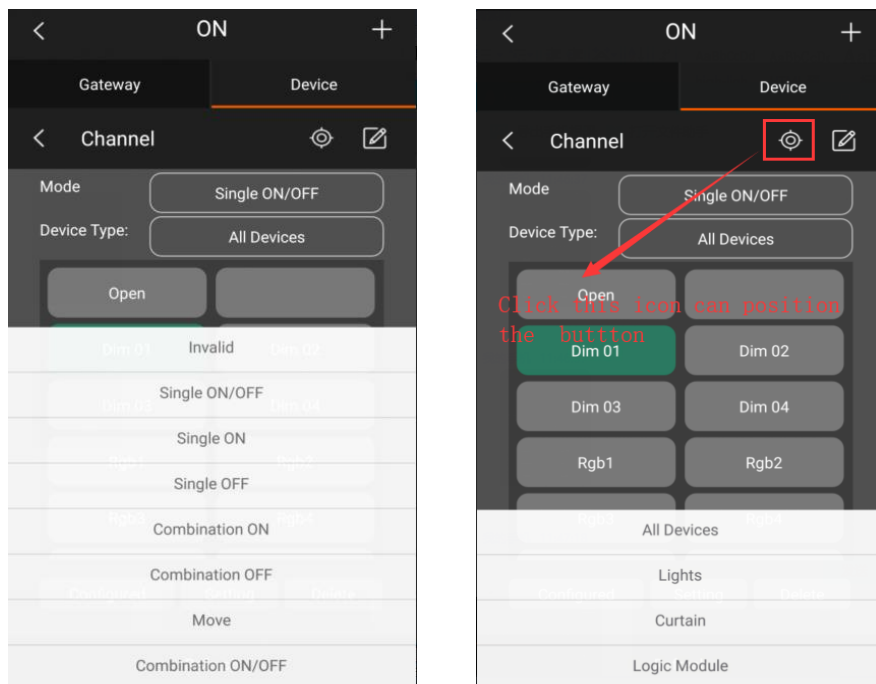


Floor heating page: Enter floor heating page, (Each channel can be visited only if there are floor heating modules in the system), choose the channel and binding it, otherwise ,it will display a blank page.

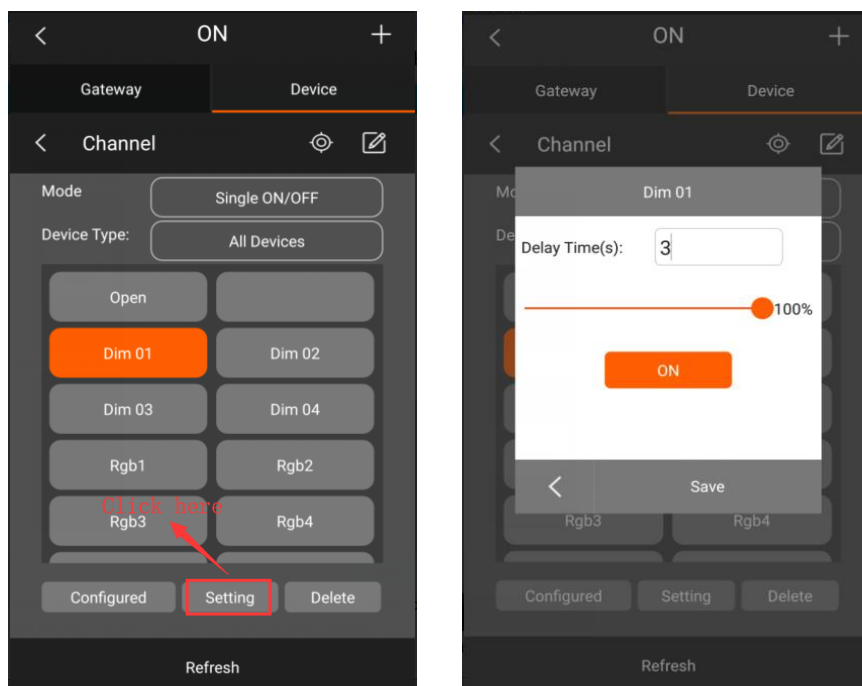


Button: You can change the current button remark and position it(the indicator flicker three times),choose the mode and device type of the current button(when choosing “All Devices”, the below area will display all the device that can be controlled by the button; when choosing “Lights”, it will only display the lights channels; when choosing “Curtain”, it

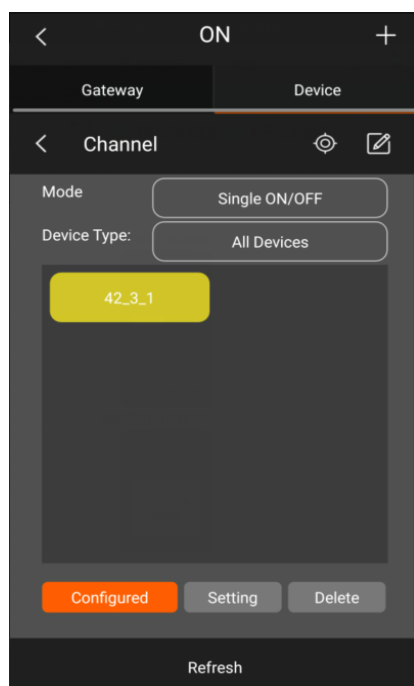
will only display the curtain channels).



Choose the channel you want to control, and then touch “setting”, configure the channel status and delay time.

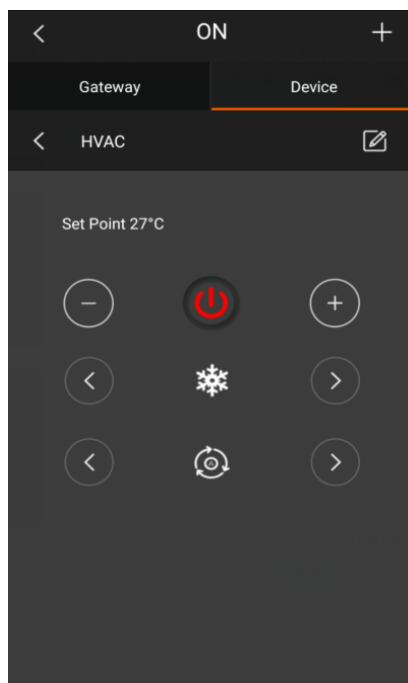
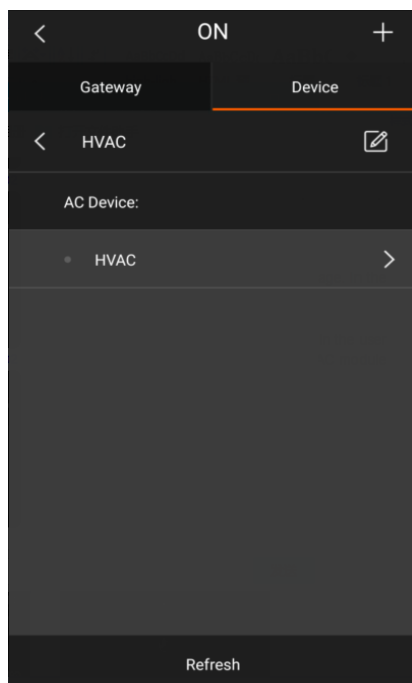


Configured page will display the devices that have been configured with button, single mode only display one target, combined mode can display several targets. If you want to delete the target, just select it and touch delete button.

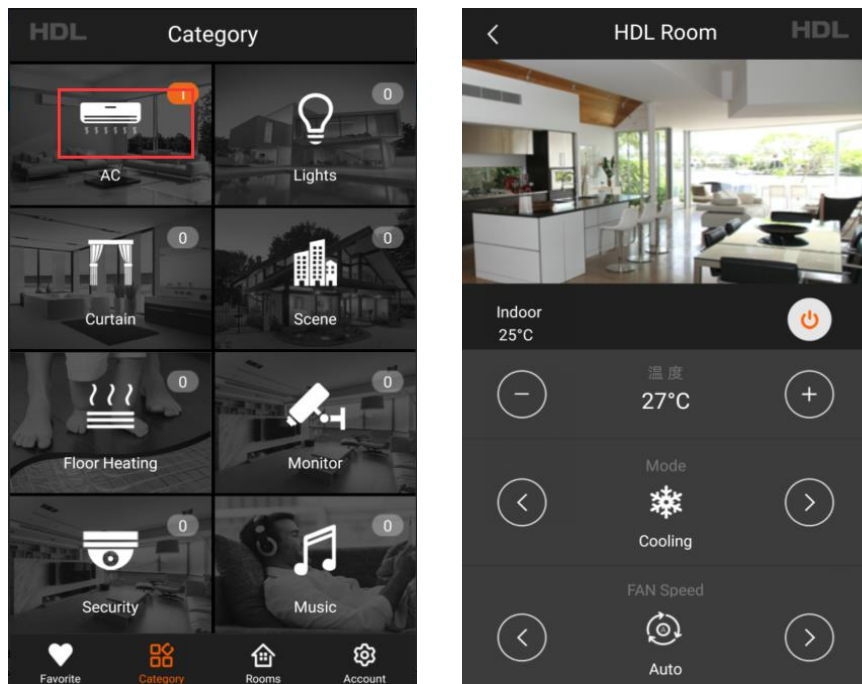


2.4.6 Air Condition

In the device page, you can touch the air condition module enter the testing page. In the testing page, you can test the main function of the air condition module.

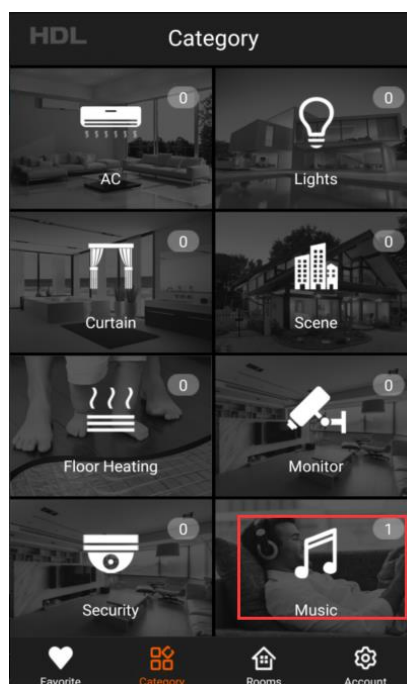
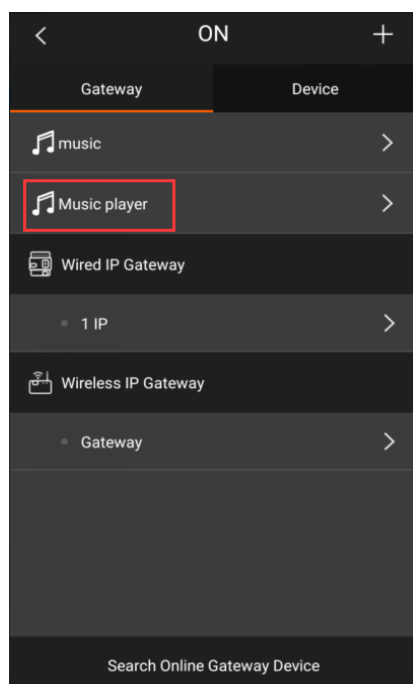


After adding the air condition module into a room, you can see the AC module in the category page. Touch the “AC” icon and enter the AC page, then you can control the AC module here.

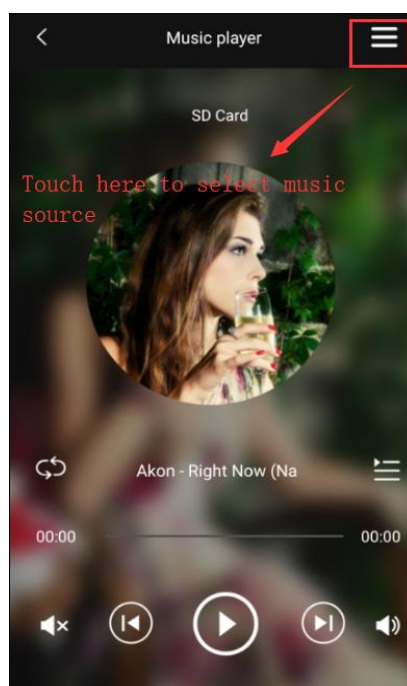
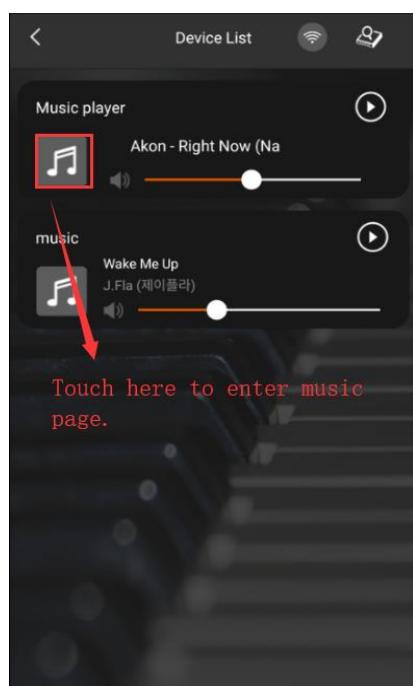


2.4.7 Music Player

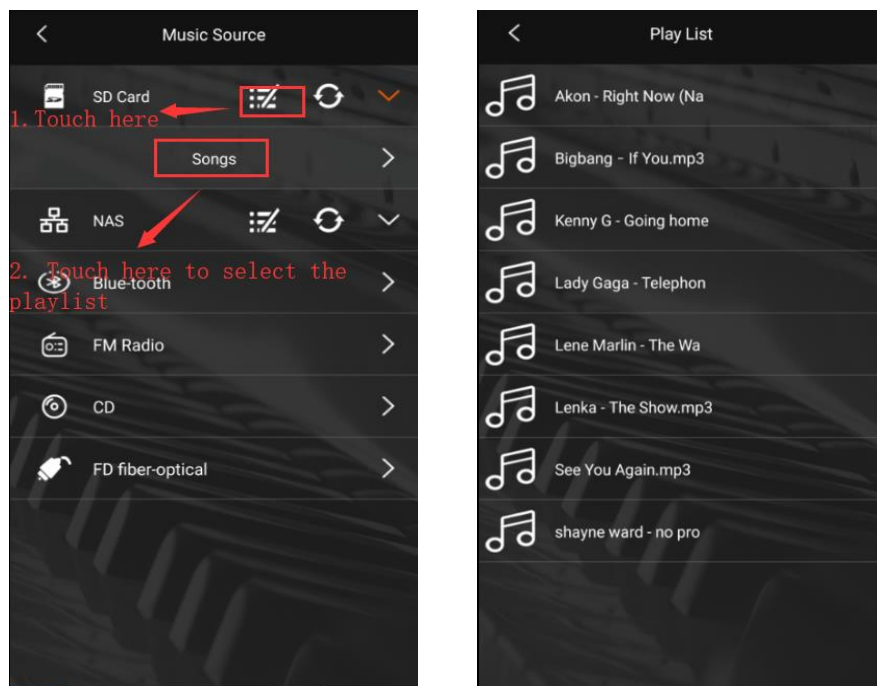
In the HDL buspro system, we have old music player and new music player, now I will introduce the old music player here (About the new music player, we have a special UM to introduce it). In the gateway page, touch “Search online gateway device” button, the music module will display in the gateway page. After adding the music module to a room, you can find the music player in the user page. Touch the “Music” icon, you can go into the music page.



In the music page, we can select the music source. Touch the button at the top right-hand corner, we can enter the music source page.

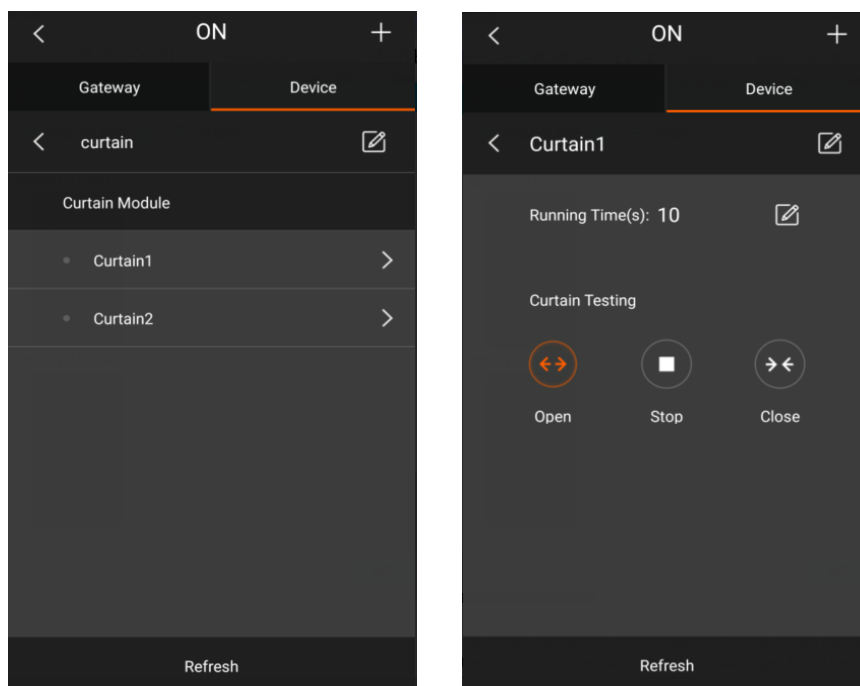


In the music source page, we can select the source. Such as SD Card, NAS, FM radio and so on. Only the HDL-MZBOX.20 support Bluetooth and FD Fiber function.



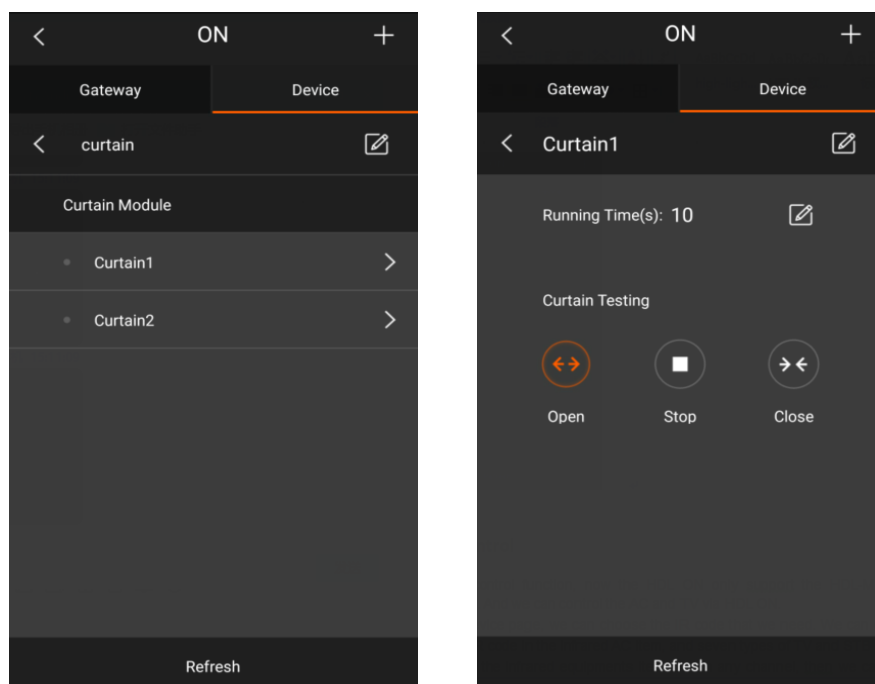
2.4.8 Curtain Module

In the device page, we can modify the device remark, set the running time and test the function of the curtain module.



After adding the curtain module into a room, we can find the curtain module in the category page. Touch the “Curtain” icon, we can go into the curtain page. And in the

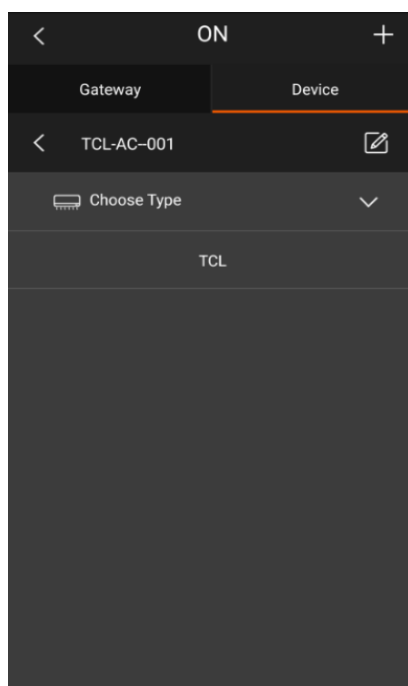
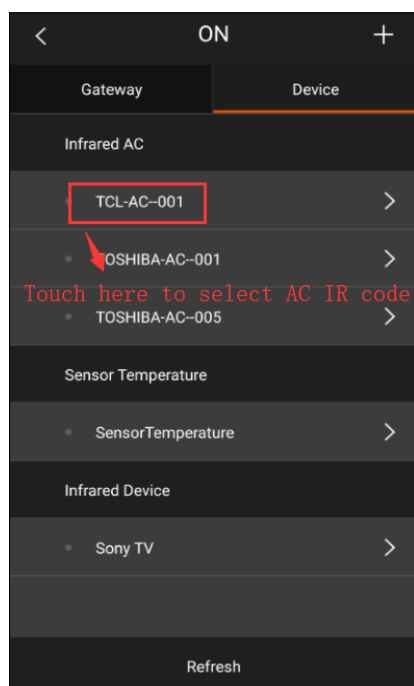
curtain device page, we can open, close and stop the curtain.



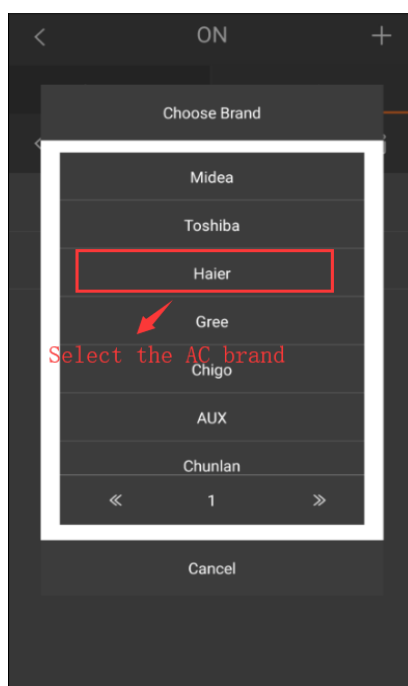
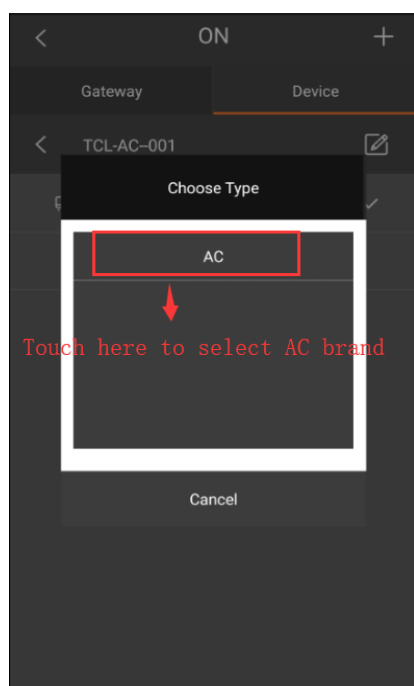
2.4.9 IR Control

For the IR control function, now the HDL ON only support the IR device that contain IR code library(do not support IR code learn from IR learner), such as HDL-MIR01R-RF.10 and HDL-MIRC04.40. And we can control the AC and TV via HDL ON. For the old IR module(SB-IR-EM), we can upload the universal device from the buspro software, then control the IR module with universal button. For more details, please refer to universal device section.

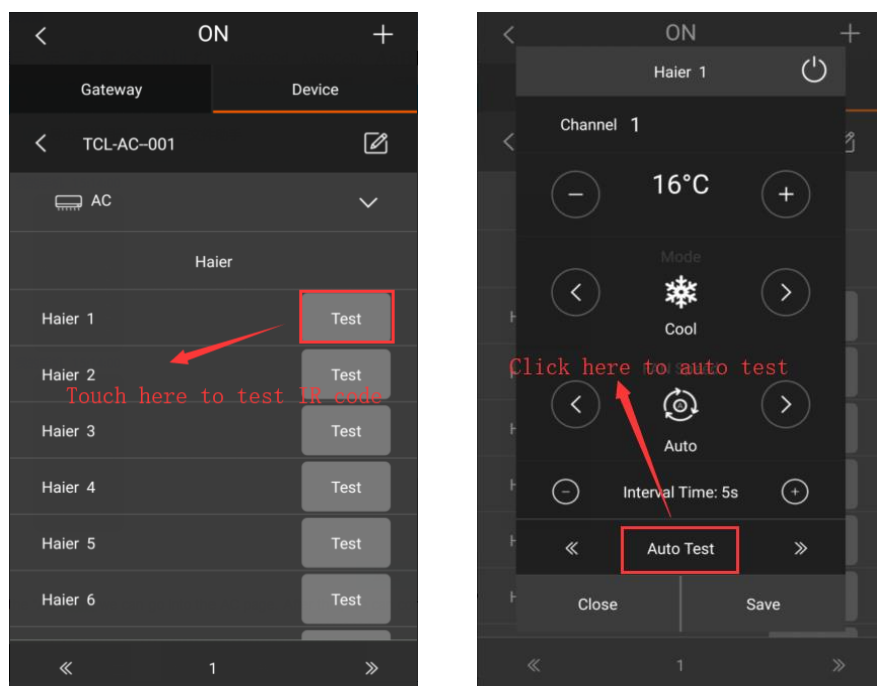
AC: In the device page, we can choose the IR code that we need. We can choose three types of AC IR code in the infrared AC item, and seven types of TV and STB IR codes can be chosen in the infrared equipments item. Touch any channel, then we can modify the remark in the new page.



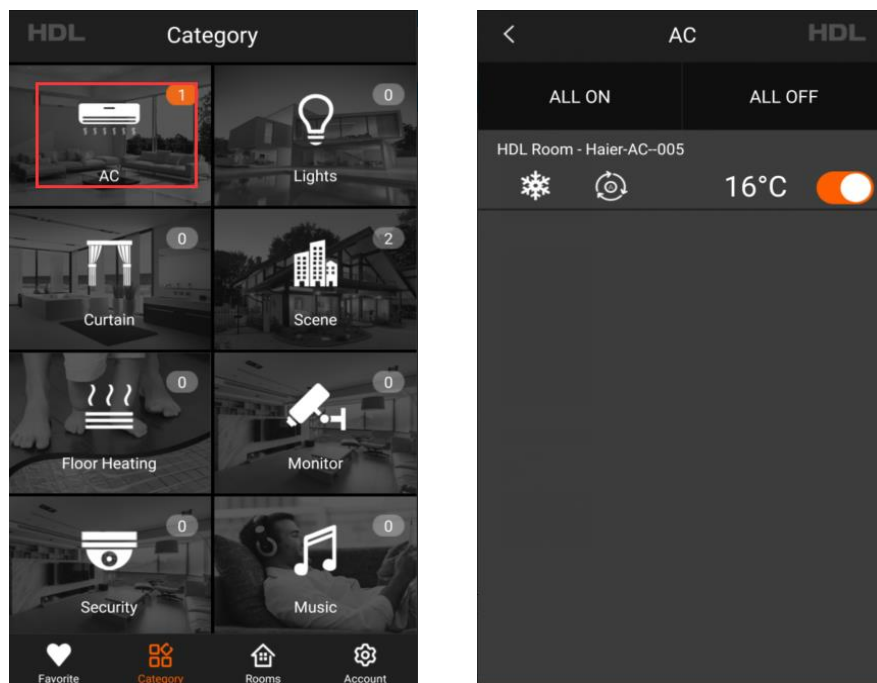
Next, choose the AC band.

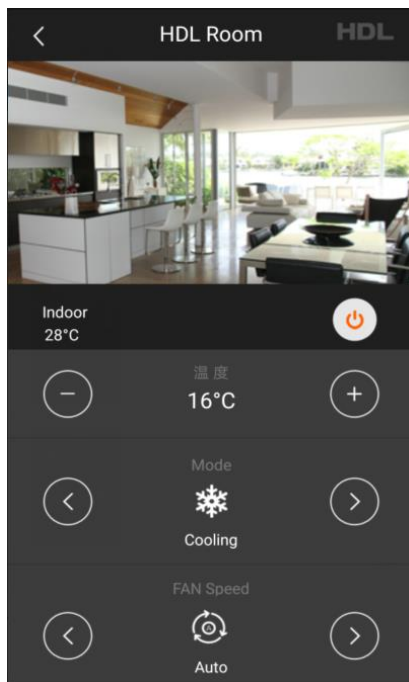


We can test the IR code and find out which IR code can control the AC that we want to control. Touch "Auto Test" button, HDL ON can test the code automatically. After testing, we can save the IR code which can control the AC.

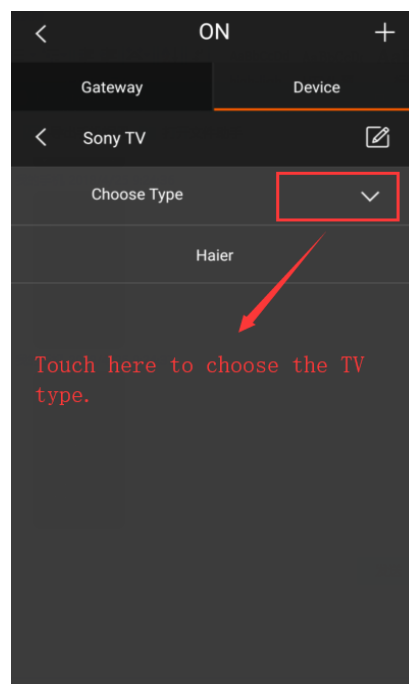
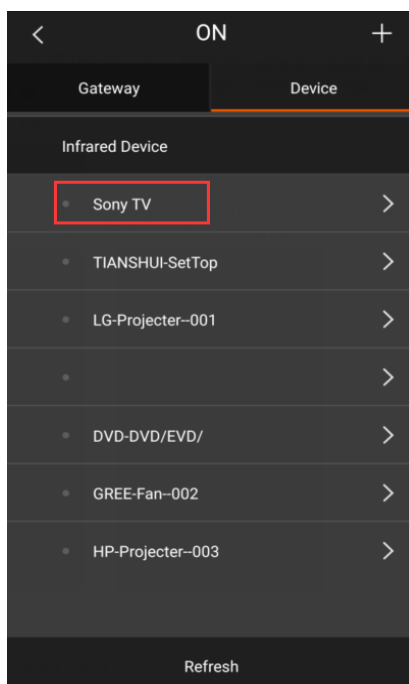


After adding the AC IR code into a room, we can find the corresponding AC in the category page. Touch the “AC” icon, we can go into the AC page. After that, we can control the AC via IR code.

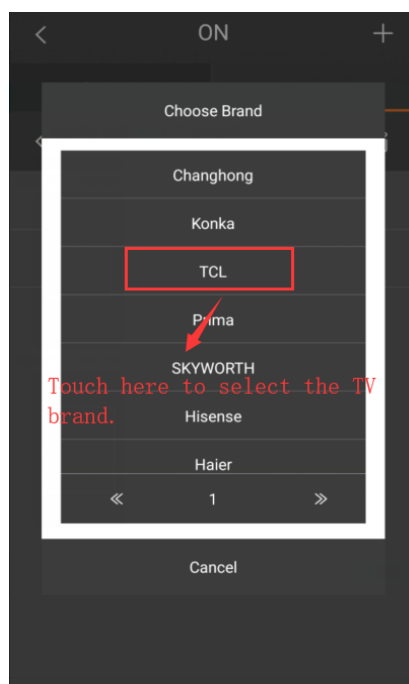
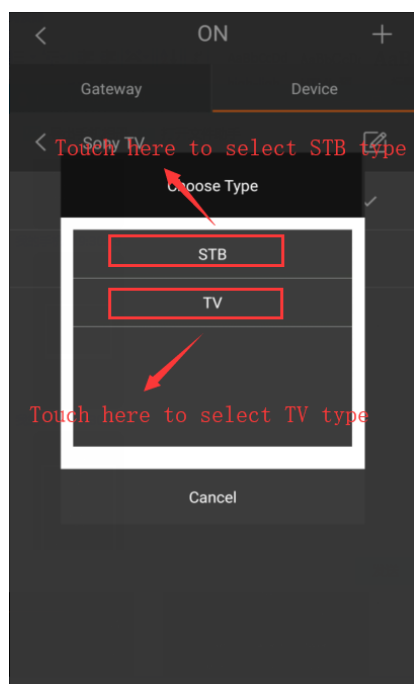




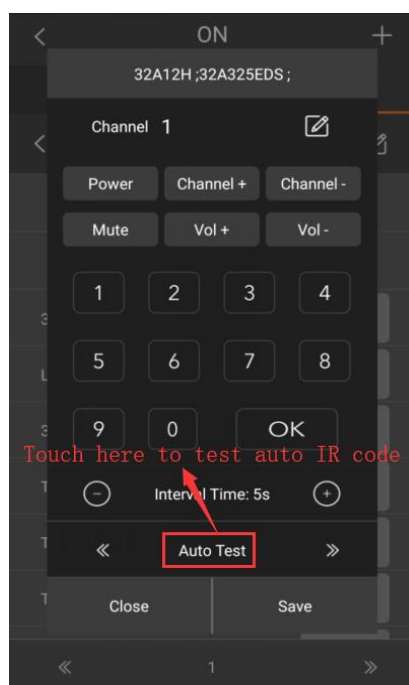
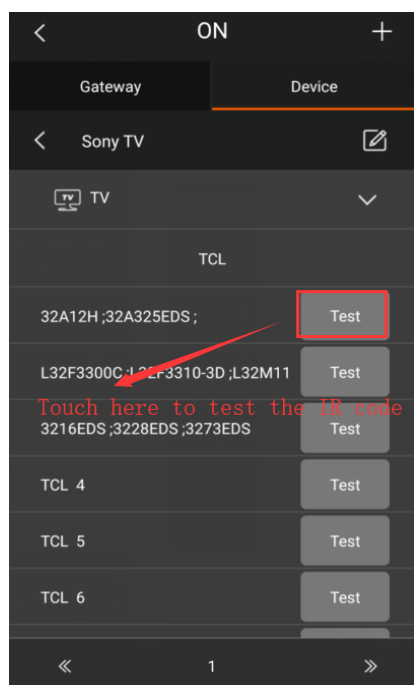
TV: Seven types of TV and STB IR codes can be chosen in the infrared equipments item. Touch any channel, then we can modify the remark in the new page



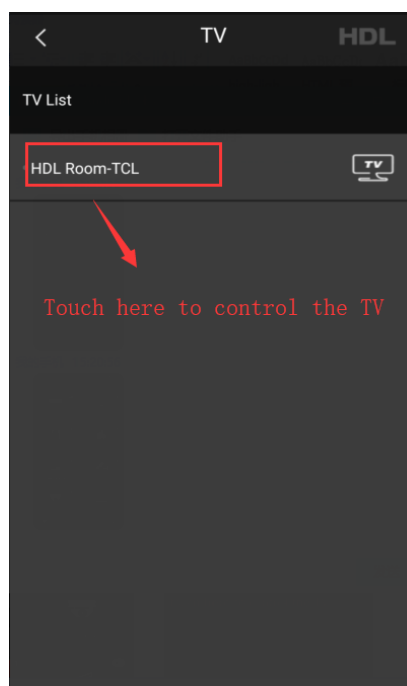
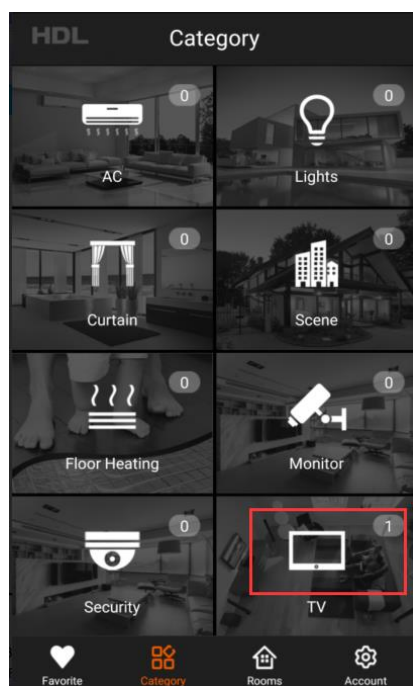
Next, choose the STB band TV band.



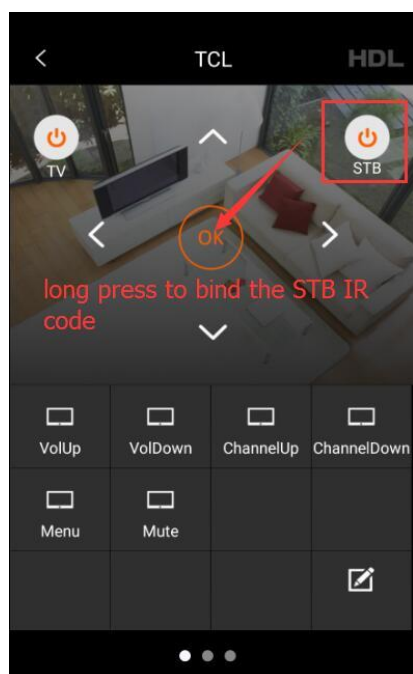
We can test the IR code and find out which IR code can control the TV that we want to control. Touch “Auto Test” button, HDL ON can test the code automatically. If the code can control TV, you can save the IR code to the IR module.

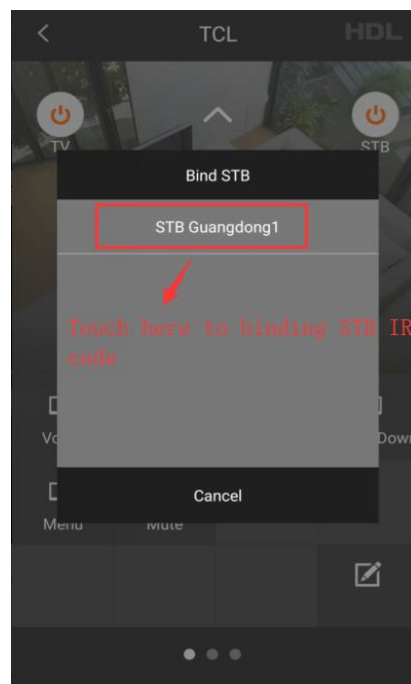


After adding the TV IR code into a room, we can find the corresponding TV in the category page. Touch the “TV” icon, we can go into the TV page. After that, we can control the TV via IR code.

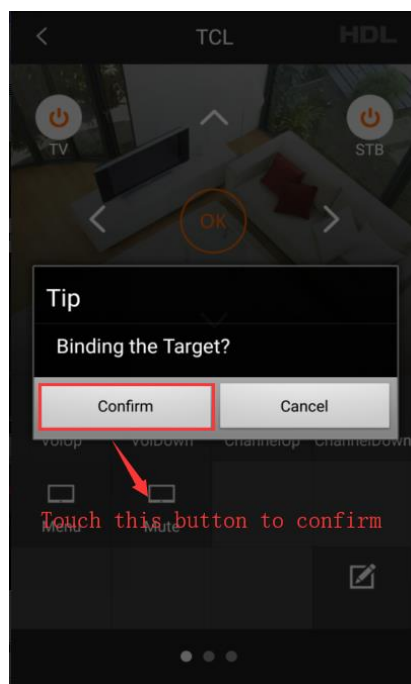


If we want to control the TV via STB, we need to bind the STB IR code. First we should save the STB IR code in the infrared equipments item. And in the TV page, we can long press the STB button to bind the target.

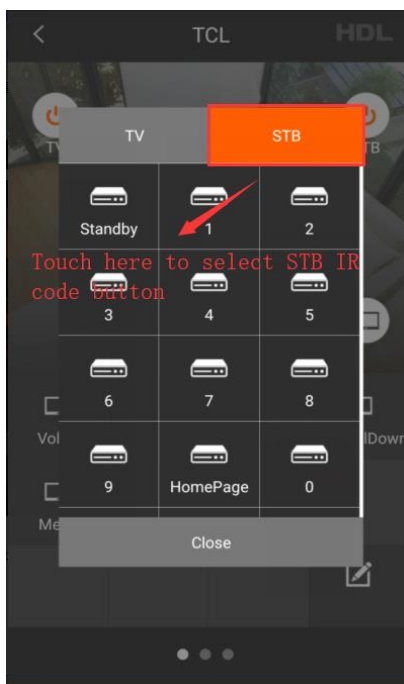
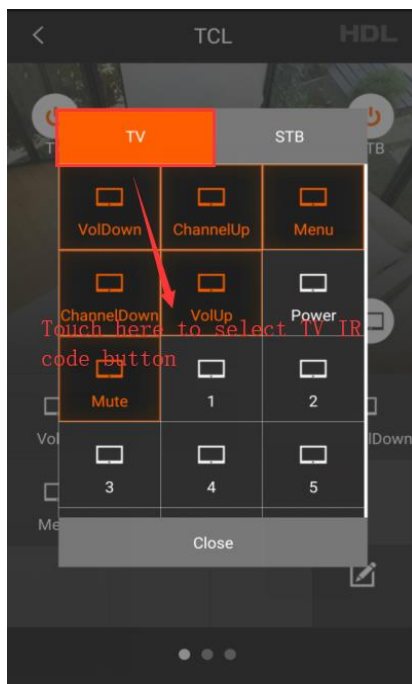
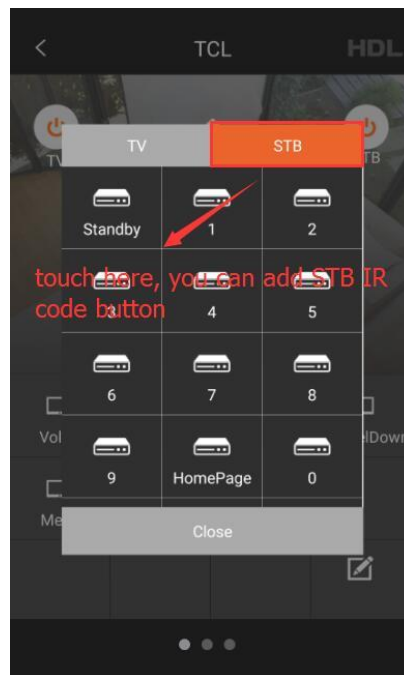




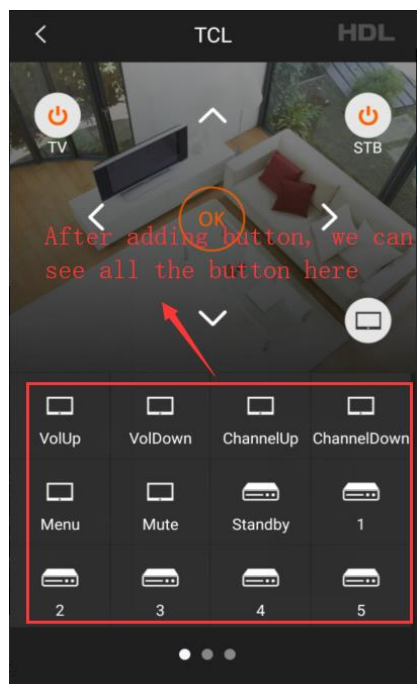
Touch "Confirm button" to bind the STB.



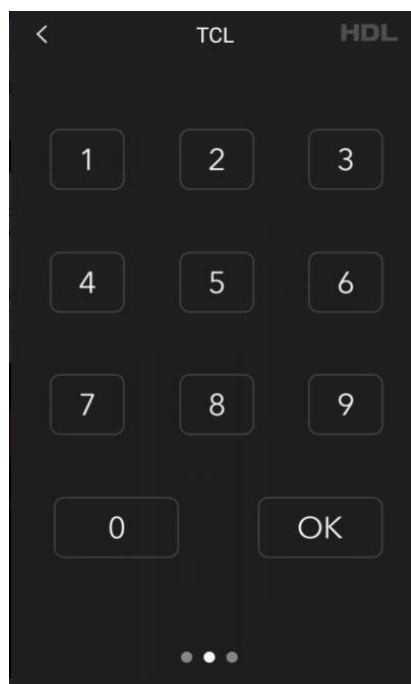
Touch the edit button in lower right corner, we can add TV button and STB button.



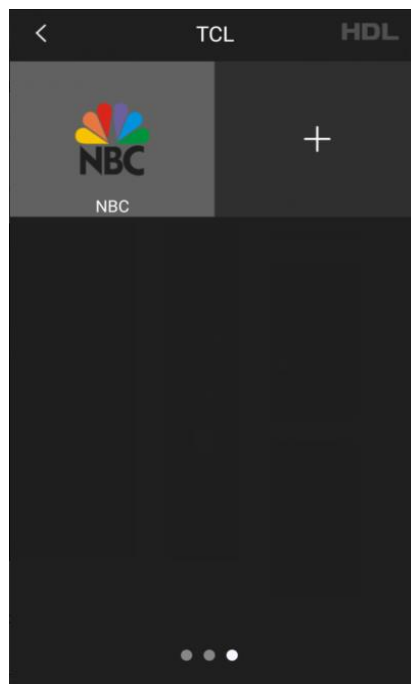
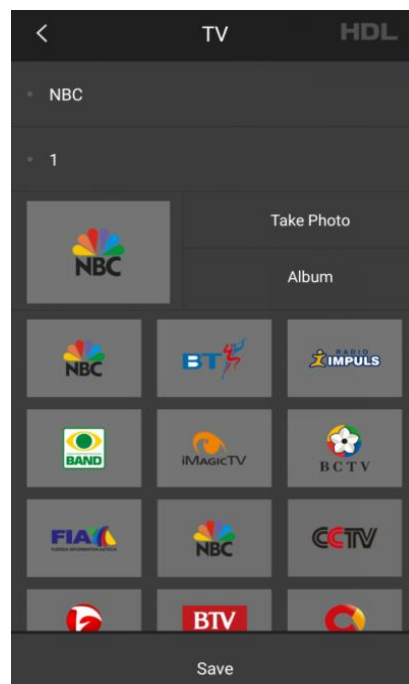
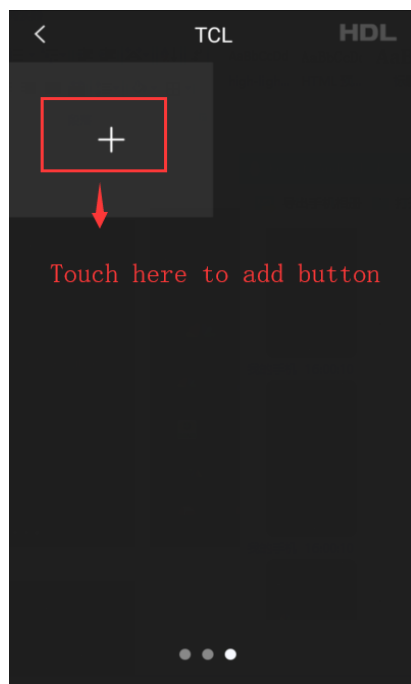
After adding button, we can see all the buttons that we add in the TV page.



Besides, we can slide from right to left in page 1, and then it will turn to page 2. Here we can control the TV with number buttons.

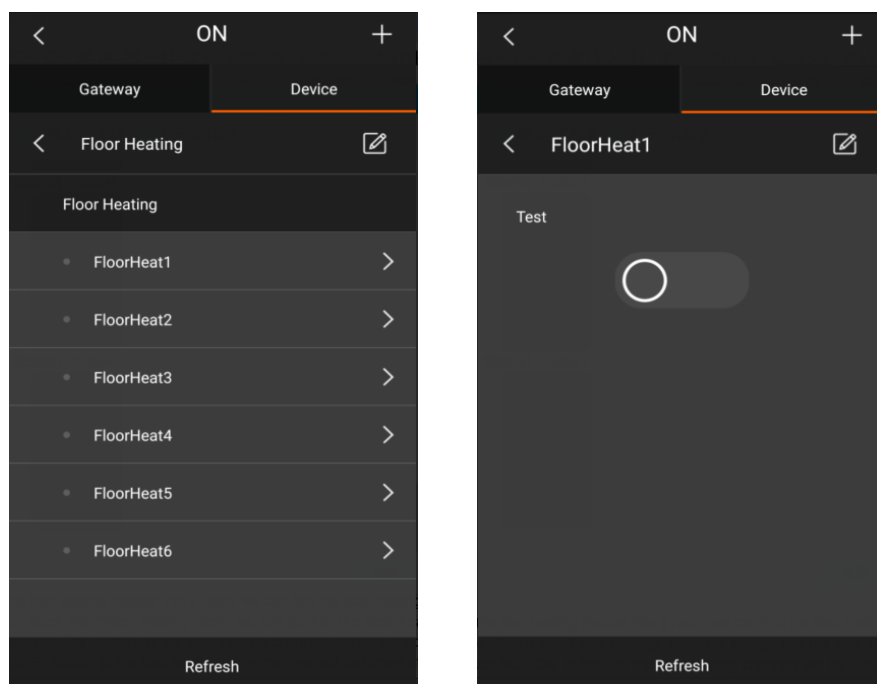


Slide from right to left in page 2, and then it will turn to page 3. And fill in the channel name "NBC" and channel number "1", select the album, save the data. After that, we can control channel 1 by the button.

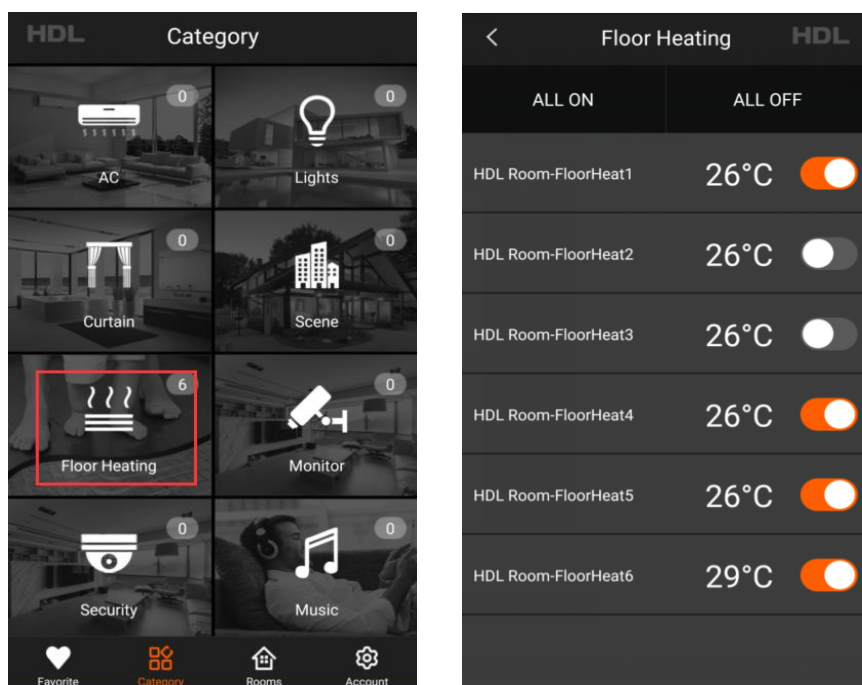


2.4.10 Floor Heating

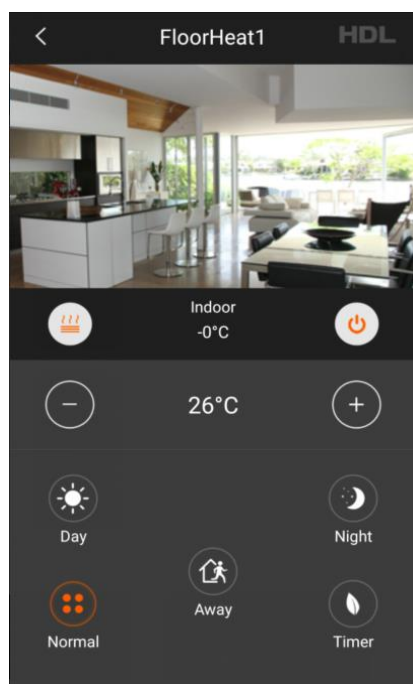
In the device page, we can modify the device remark and the channel remark. Besides, we can test the relay in each channel.



After adding the floor heating module into a room, we can find the floor heating module in the category page. Touch the “Floor Heating” icon, we can go into the floor heating page. When we touch “ALL ON” button, all the floor heating channels will be turned on. When touching “ALL OFF” button, all the floor heating page channels will be turned off.

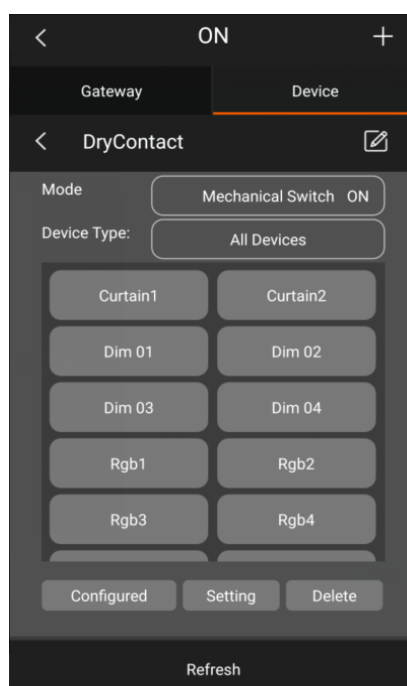
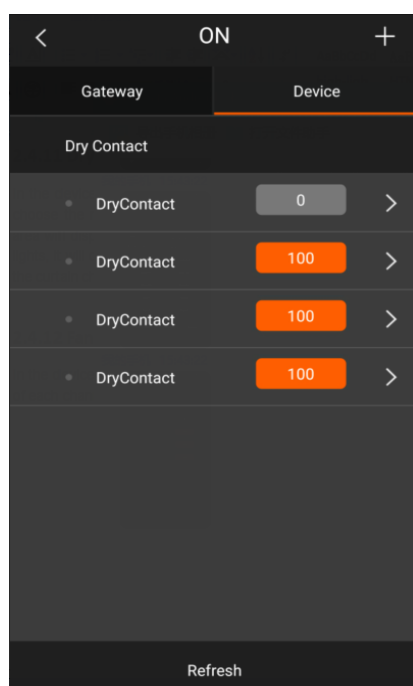


After touching the floor heating channel, we can switch the channel, set working status(e.g. floor heating, floor cooling), set working mode(e.g. day, night, normal, away and automatic), and set the temperature.



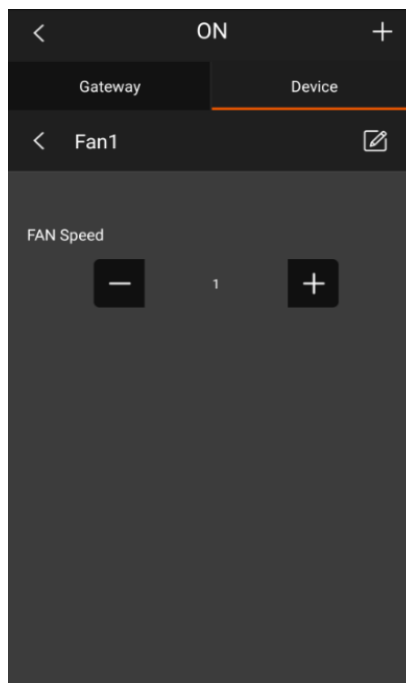
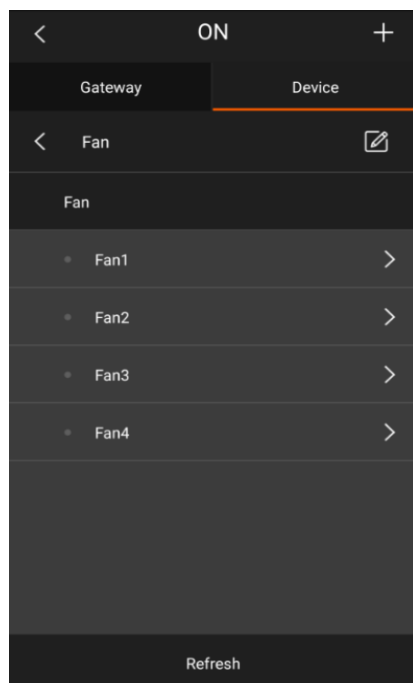
2.4.11 Dry Contact

In the device page, we can modify the device remark and the channel remark. We can choose the mode and device type of each channel(when choosing all device, the below area will display all the device than can be controlled by the button; when choosing the lights, it will only display the lights channels; when choosing the curtain, it will only display the curtain channels). And we can configure each channel just like the button of DLP.

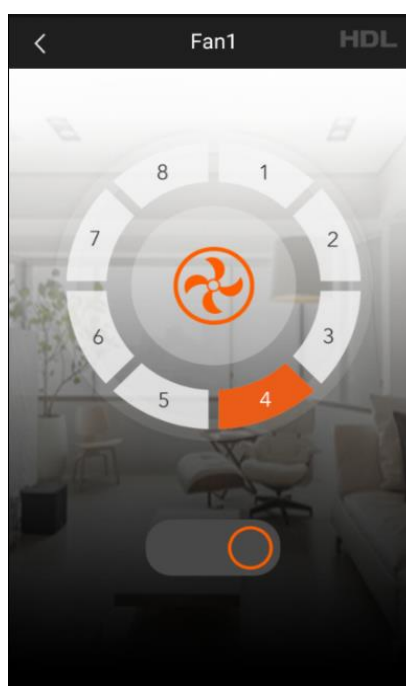
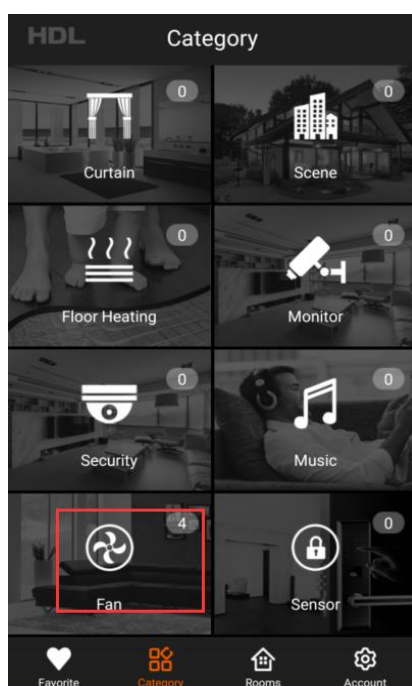


2.4.12 Fan

In the device page, you can test the wind speed of each fan channel , modify the remark of each channel.



After adding the fan module into a room, you can see the fan module in the category page. Touch the “Fan” icon and enter the fan page, then you can control the fan module here.



2.4.13 Camera

Now HDL ON support two kinds of cameras, URL camera and EZVIZ camera.

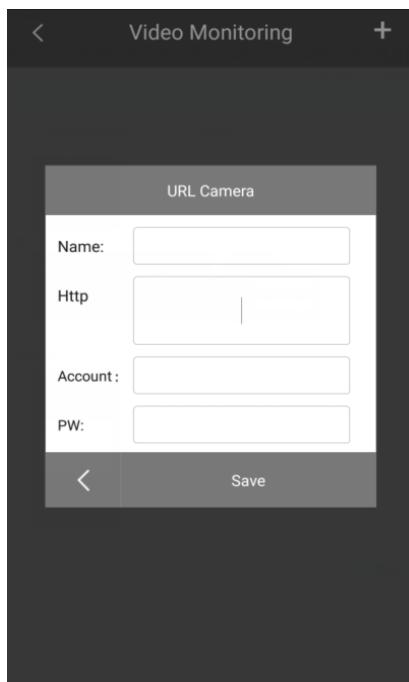
For URL camera, if the IP address of camera is the following format: `http://ip:port/1/jpg`, then it is URL camera, for URL camera, just fill the name, IP address, account and password.

Name: you can fill in any name you want.

Http: fill in the IP address of camera.

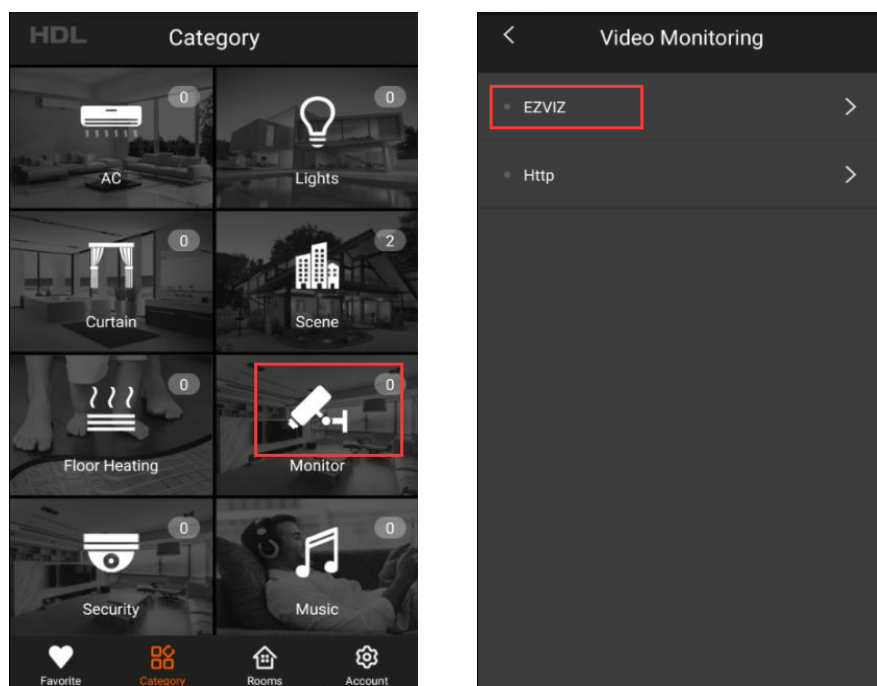
Account: fill in the account of the camera.

PW: fill in the password of the account.

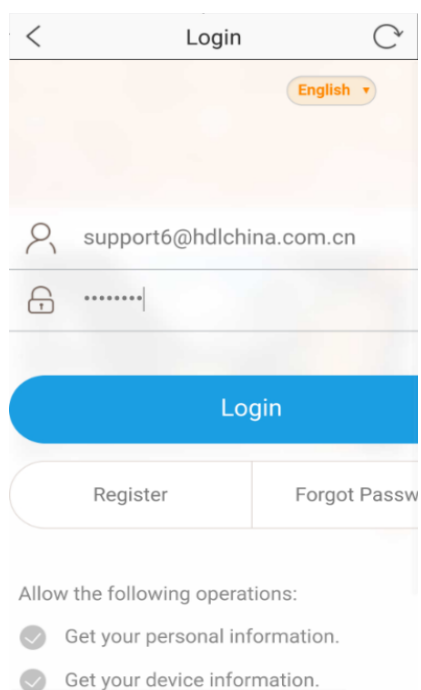


Next I will introduce EZVIZ carefully.

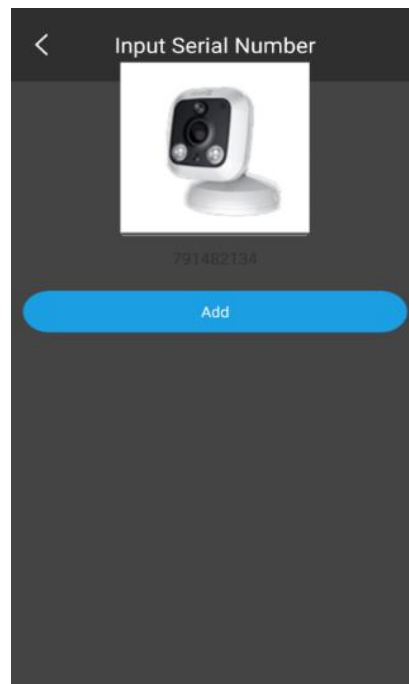
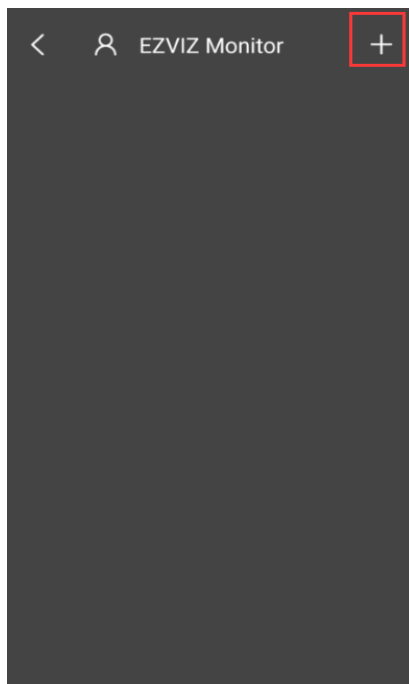
1. We can click Monitor icon to enter monitoring page.



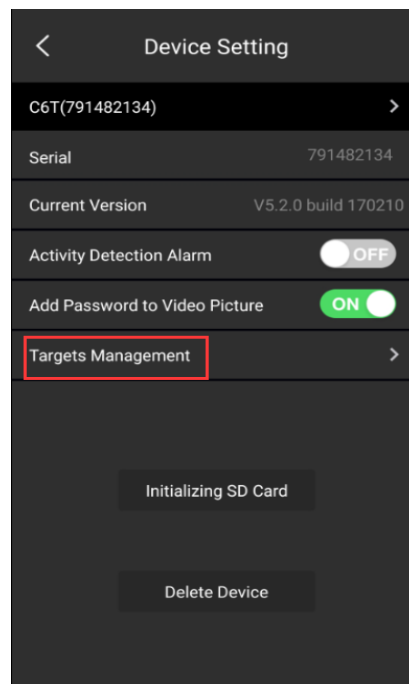
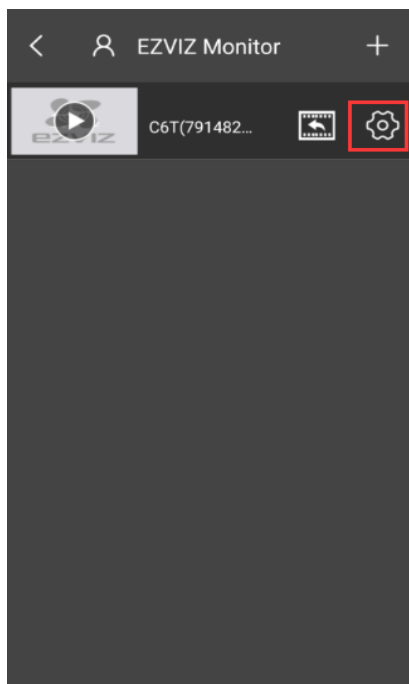
2. After clicking the EZVIZ button, it will come out a page to fill your EZVIZ account. If you have an account, just fill in your account and password directly. Otherwise, need to register an account first.



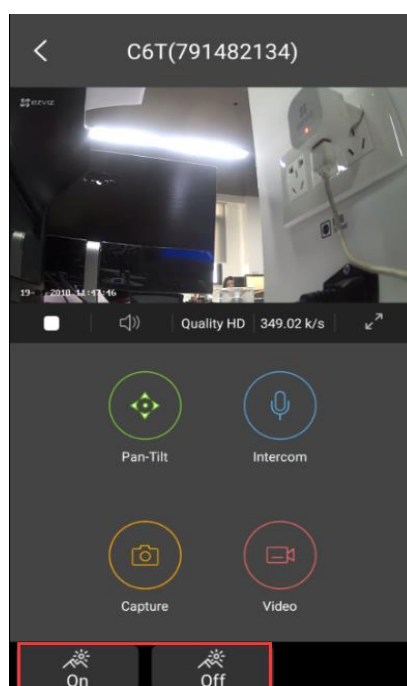
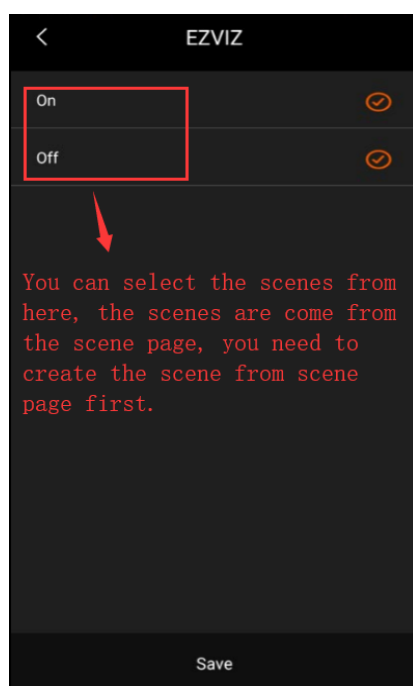
3. When we login the account, we will enter the EZVIZ monitor page, then press “+” button to scan the QR code of the camera, and click add button to add the camera.



4. After add a camera to HDL ON, click configuration button to enter device setting page. If we want to trigger some scenes in the camera monitoring page, we can click targets management button.



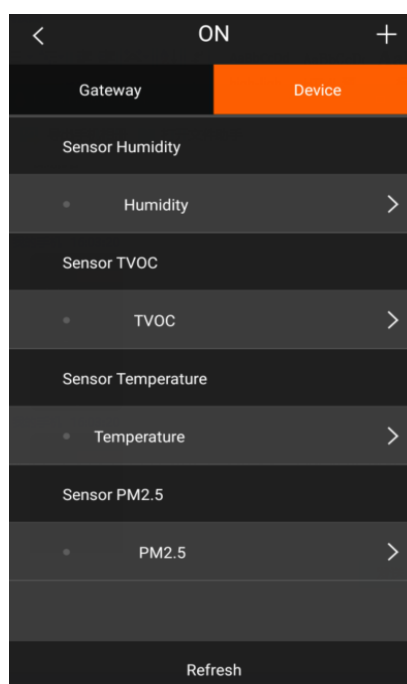
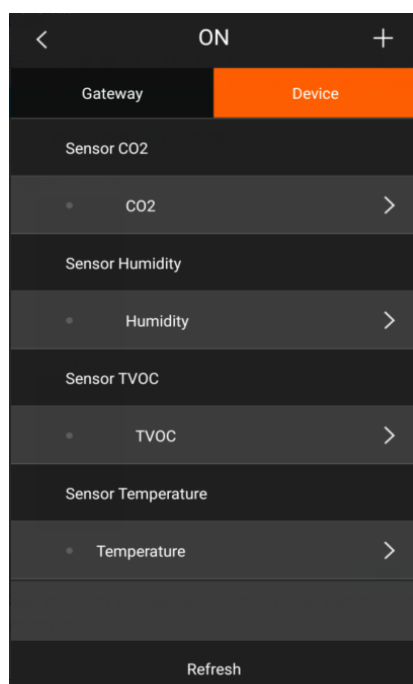
5. Select the scenes in the scene selecting page, the scenes are come from scene page, you need to create the scene from scene page first, then you can control the scene in camera page. For example, you can create a scene to open the door or turn on the lighting.



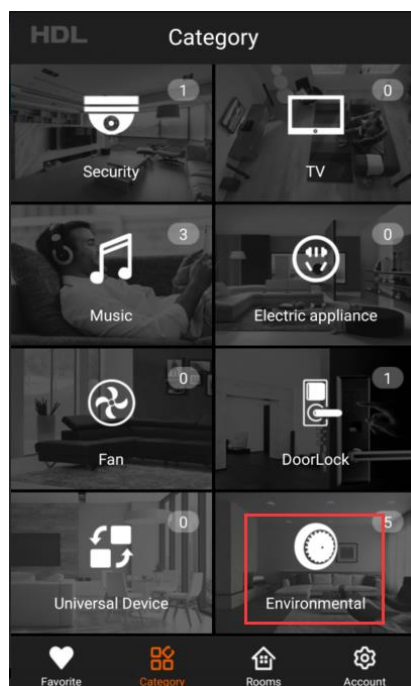
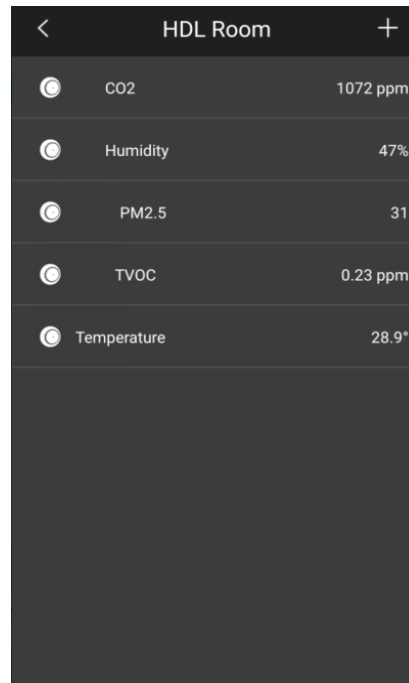
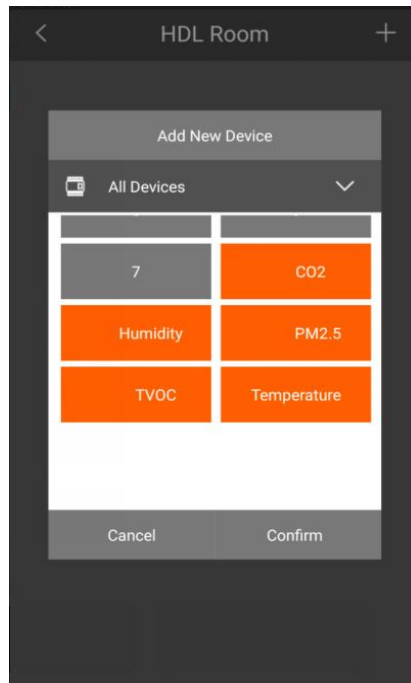
2.4.14 Air Quality Sensor

Now we have develop an HAIKE sensor which can detect the air quality. Now it is not ready to sell. //2018/5/30.

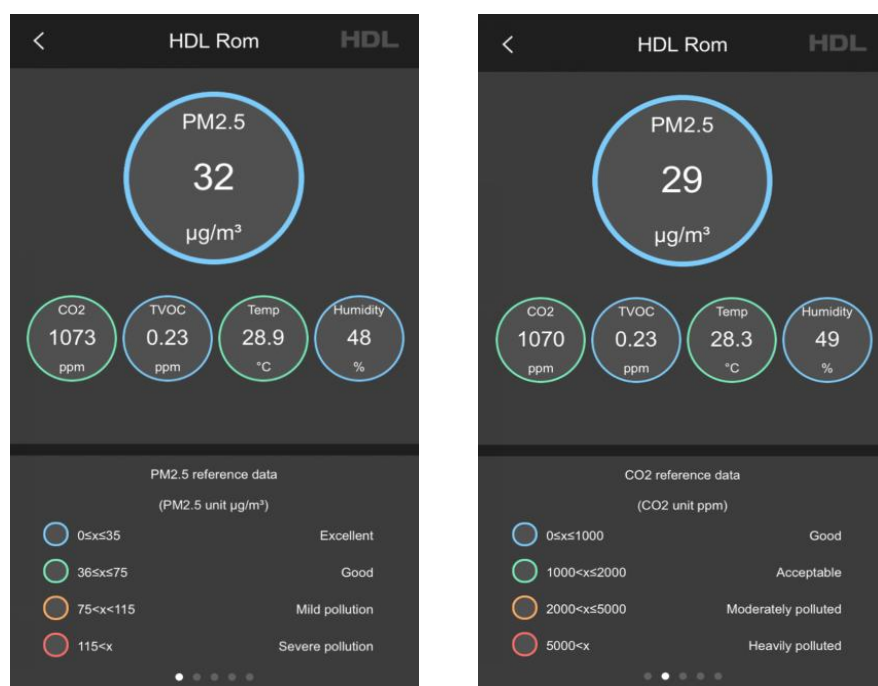
In the device page, we can modify the device remark and each sensor remark. HAIKE sensor contains sensor CO2, sensor humidity, sensor TVOC, sensor temperature and sensor PM2.5.



After adding the sensors into a room, you can see the Environmental icon in the category page. Touch the “Environmental” icon and enter the Environmental page, then you can read the sensor data here.



Touch the “Environmental” icon in the category page, we can read the detailed data of each sensor.



2.4.15 Security

If we want to control the security module, need to upload data from buspro 2 software. At first, we need to finish the security configuration from the buspro 2 software. The HDL ON subnet ID and device ID is 252-252. We need to fill in the HDL ON device ID and subnet ID in the arming setting page.

42-11\SecurityM

Basic information | Basic setting | Arming setting | Alarm commands | Vacation setting | ByPass setting | Auto dial out | Advanced security

Area No. 1 Enable

When about to arm, this module will check if everyone is OK. For example, if windows are closed. You can select up to 32 devices for checking. If you version is 2011/06/21 or above, if now the door is opened, it can output 8 commands. Only 1-16 this function.

Alarm+ByPass | Arming settings

Index(1-32) from 1 To 1 Read

Index	Alarm	Subnet ID	Device ID	Channel	Bypass	Trigger	Status	Mode	Remark
1	<input checked="" type="checkbox"/>	42	2	4	<input type="checkbox"/>	Disconnect	Close	Normal	dry contact1
2	<input type="checkbox"/>	42	10	1	<input type="checkbox"/>	Disconnect	Not online	Normal	PIR sensor
3	<input type="checkbox"/>	42	10	2	<input type="checkbox"/>	Disconnect	Not online	Normal	
4	<input type="checkbox"/>	42	2	1	<input type="checkbox"/>	Connect	Not online	Normal	
5	<input type="checkbox"/>	255	255	255	<input type="checkbox"/>	Disconnect	Not online	Normal	

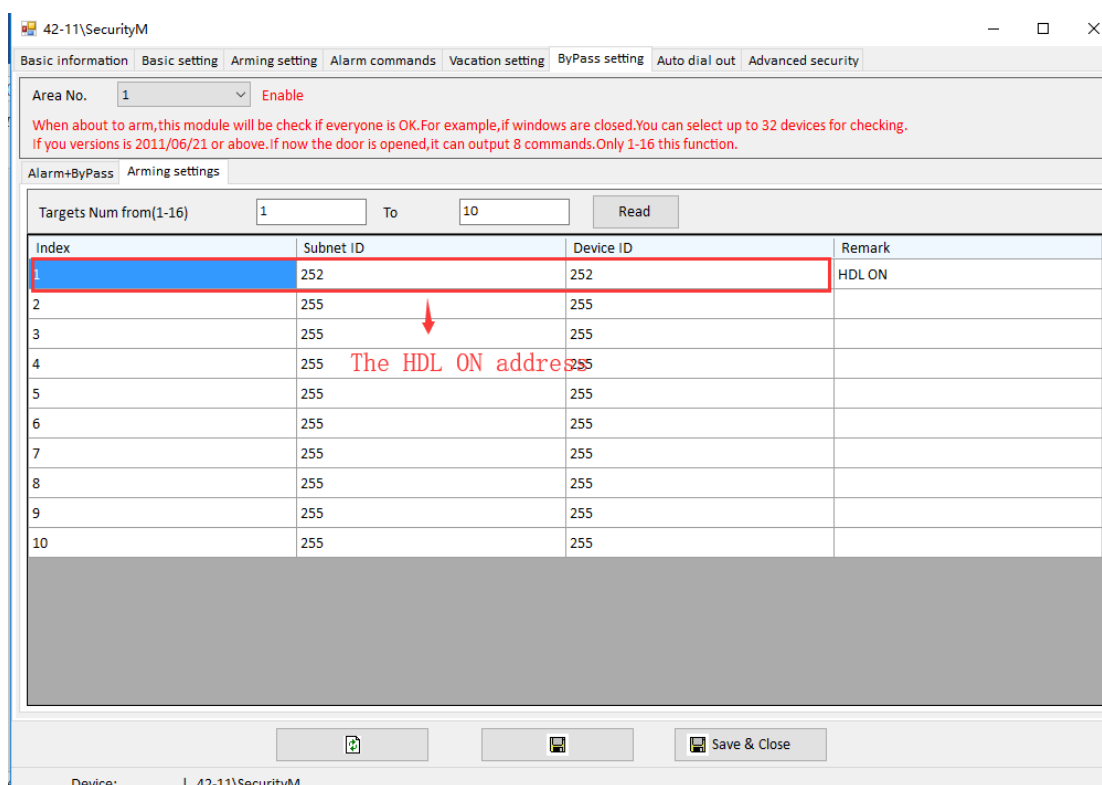
The dry contact information.

Current selected index Targets

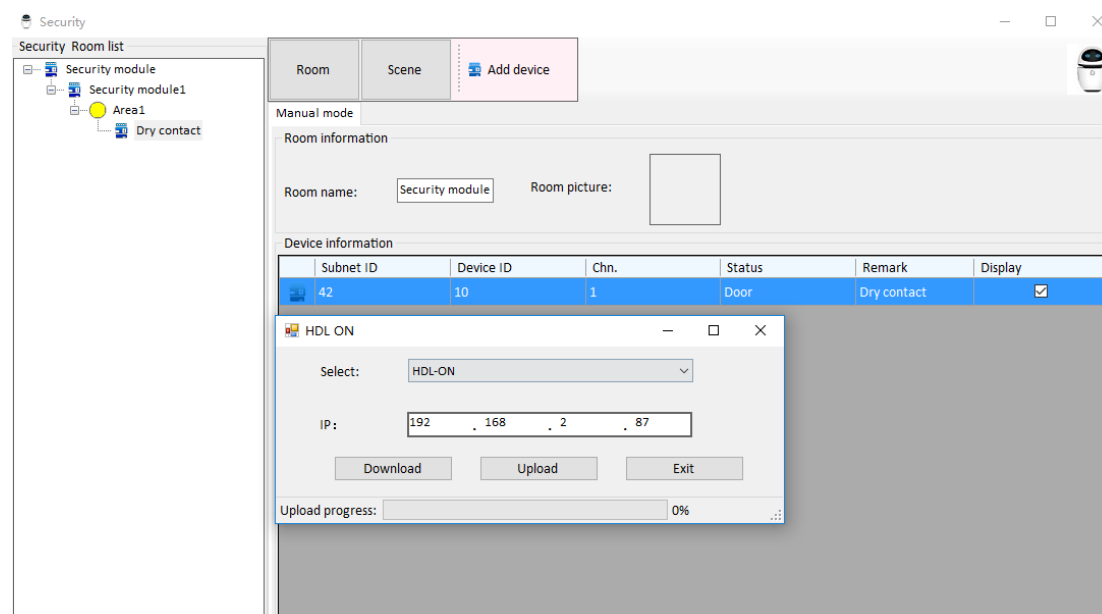
Index	Subnet ID	Device ID	Type	Param1	Param2	Param3
1	1	1	Invalid	N/A	N/A	N/A
2	255	255	Invalid	N/A	N/A	N/A
3	255	255	Invalid	N/A	N/A	N/A
4	255	255	Invalid	N/A	N/A	N/A
5	255	255	Invalid	N/A	N/A	N/A
6	255	255	Invalid	N/A	N/A	N/A
7	255	255	Invalid	N/A	N/A	N/A
8	255	255	Invalid	N/A	N/A	N/A

Save & Close

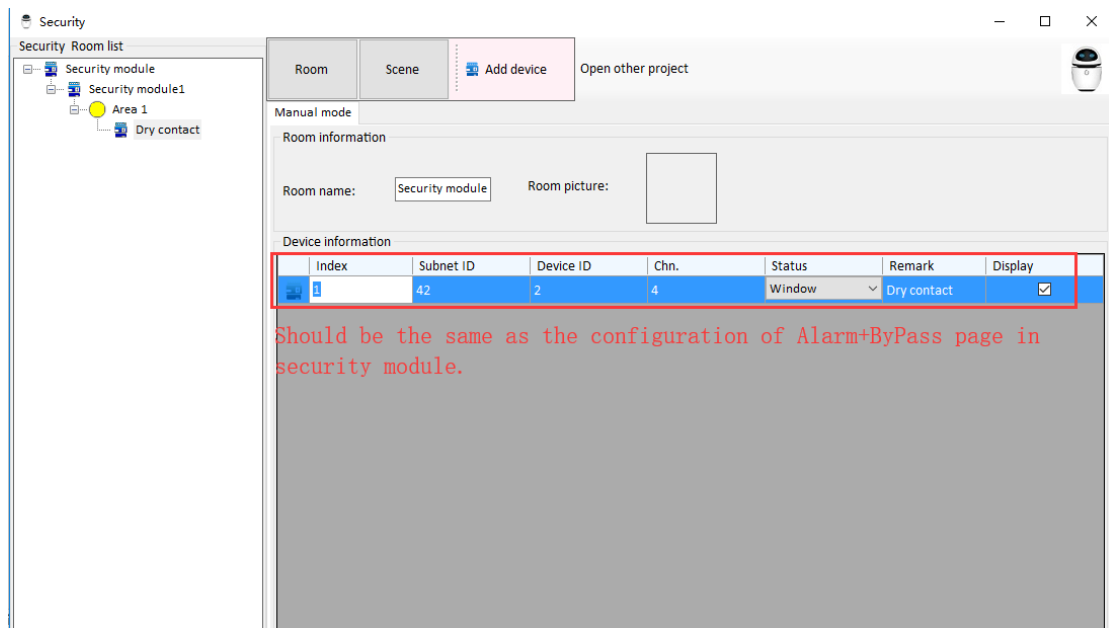
Device: 42-11\SecurityM



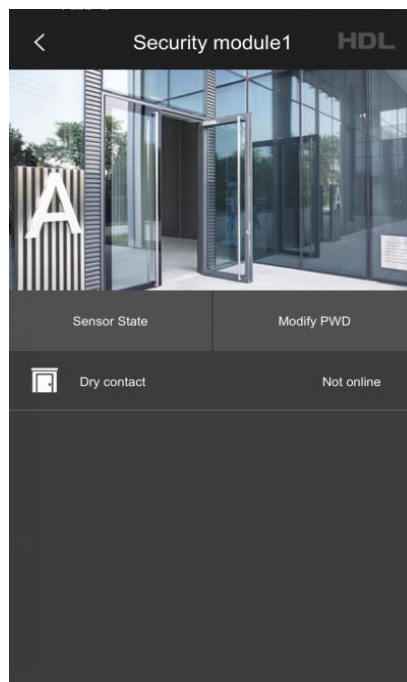
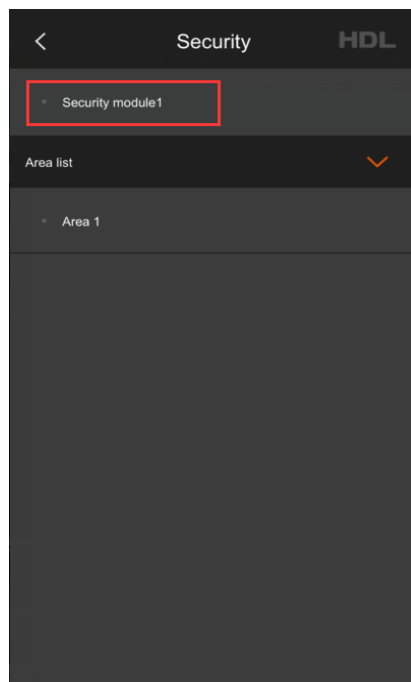
After finish the configuration on security, we need to upload the security data to HDL ON. Please refer to the upload data section in this UM to upload the security to HDL ON APP.

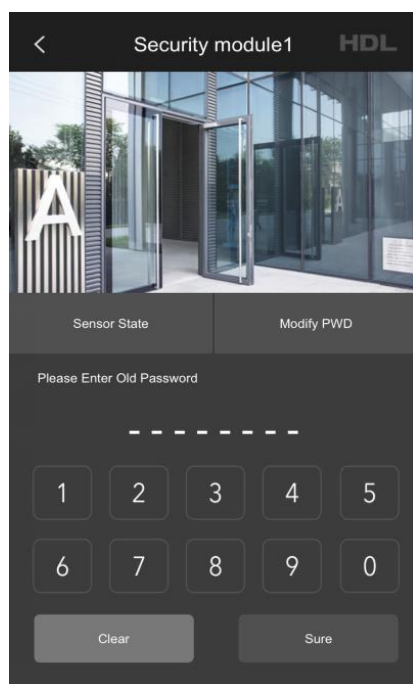


Attention: When we add the security module, first, need to add security module, then add the area, at last, add the dry contact. About the dry contacts which are connected to the security module, we also need to configure it in the HDL ON configuration page, just make sure the index, subnet ID, device ID and the channel are the same as the configuration of Alarm+ByPass page in security module.

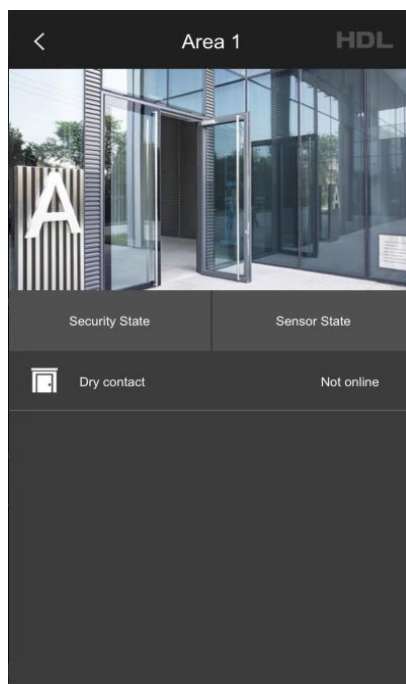
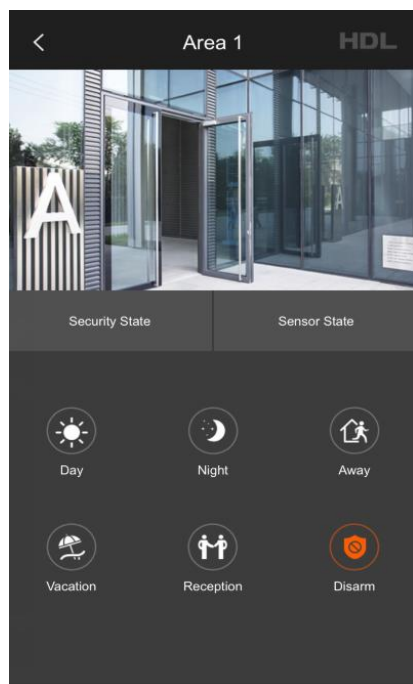


After upload the security data to HDL ON, touch the “Security” icon in the category page, then touch the security option, we can see the dry contact status and the modify the disarm password.



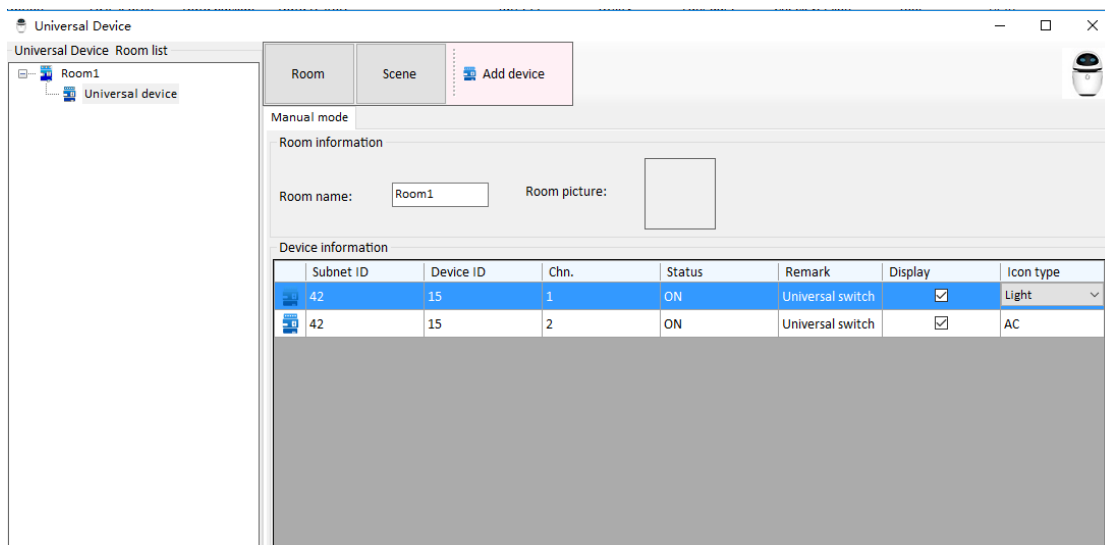


If we select the area, then we can arm and disarm the area, look at the dry contact status of the area.

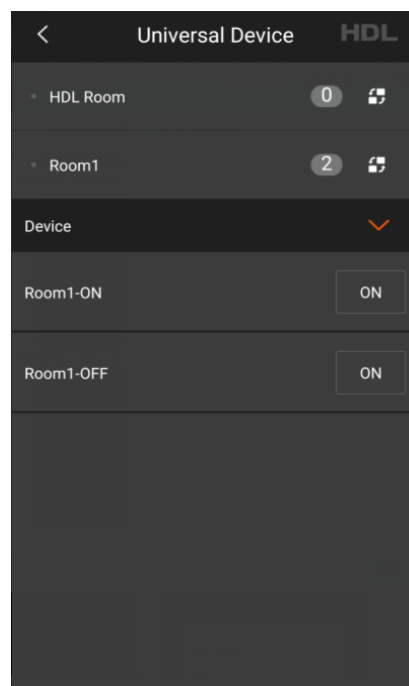
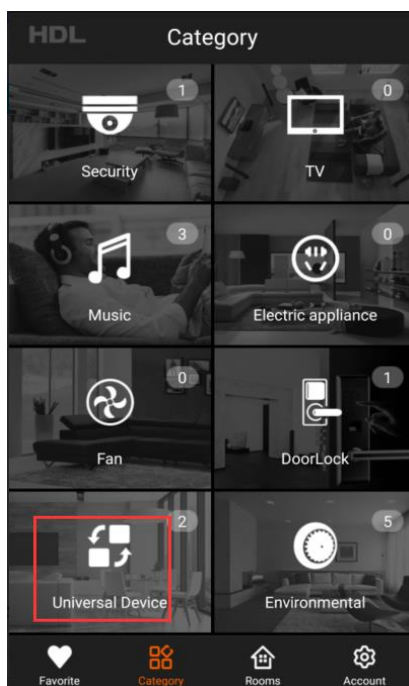


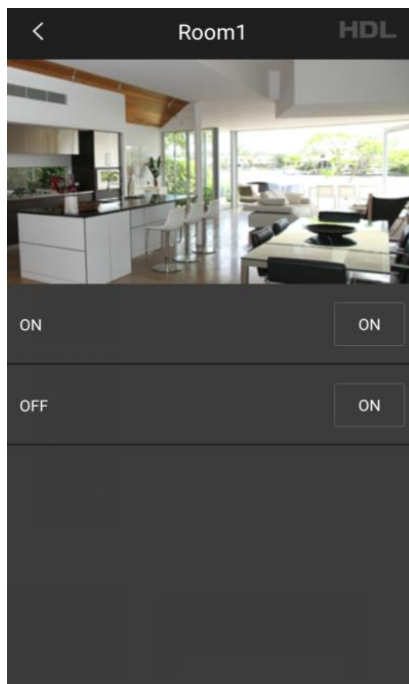
2.4.16 Universal Device

If we want to control the device by universal switch, need to upload data from buspro 2 software. We need to add the universal device to a room, then upload to the HDL ON APP.



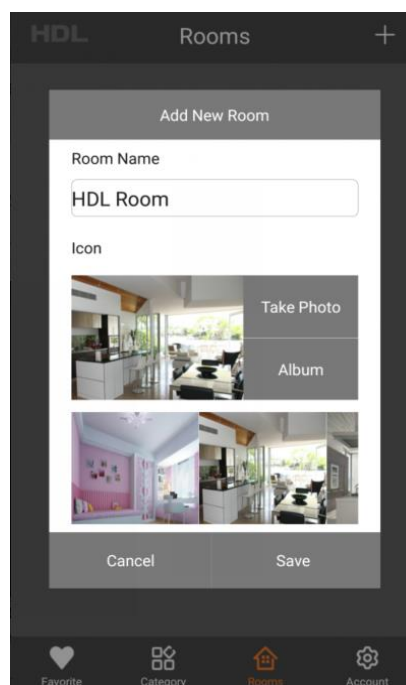
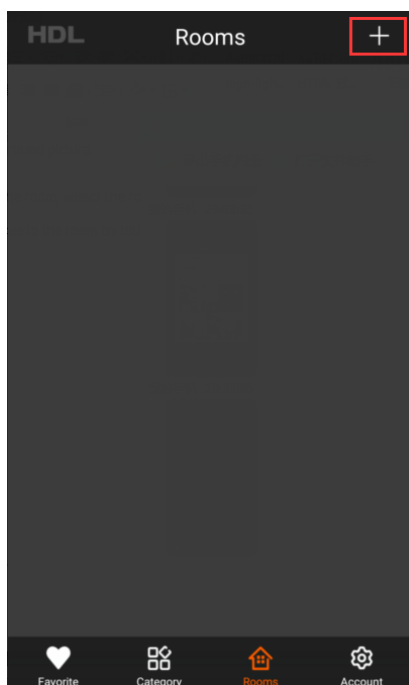
After upload the security data to HDL ON, touch the “Universal Device” icon in the category page, then we can touch the button to send the universal switch.



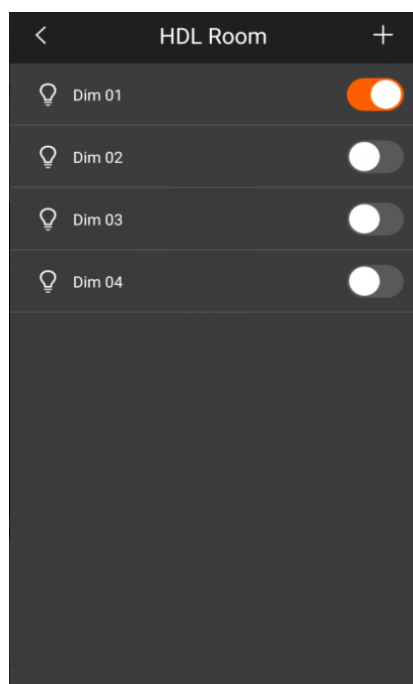
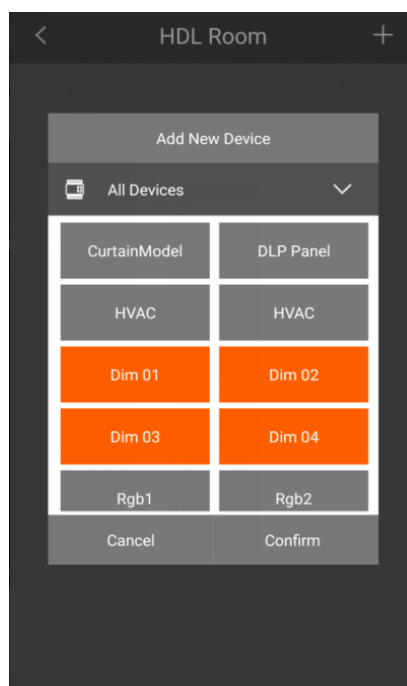
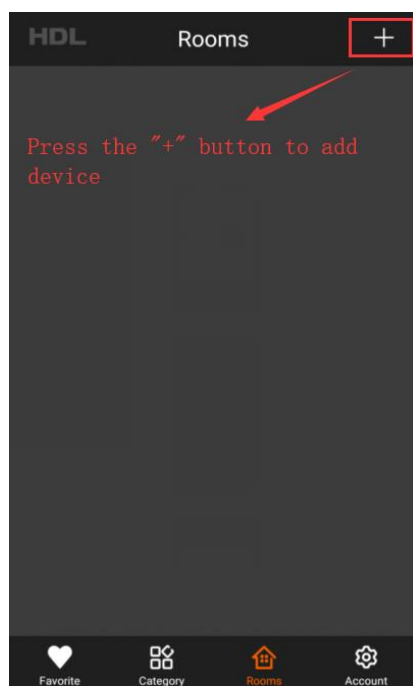


2.5 Room Setup

In the room page, after touch “Add New Room” button, you can mark the room name and set the background picture.



After create the room, select the room you want to configure, select the devices, and then add the devices to the room by touch the “confirm” button in the lower right quarter.



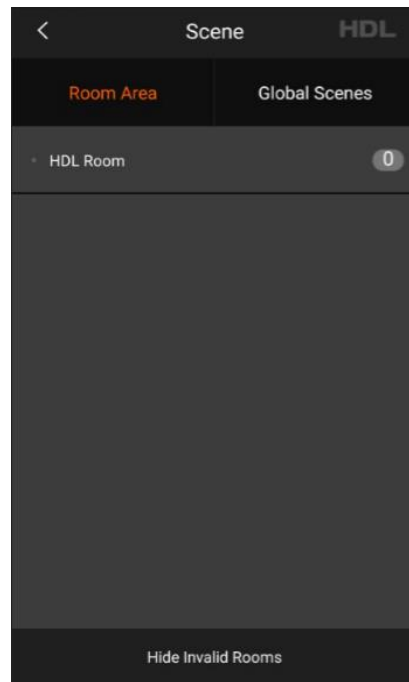
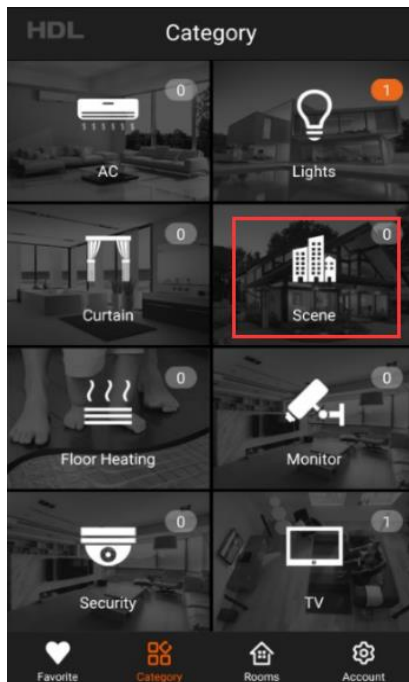
3 Scenes

Scenes include global scene and room area, the functions are not different between them, just make us manage the scenes more conveniently.

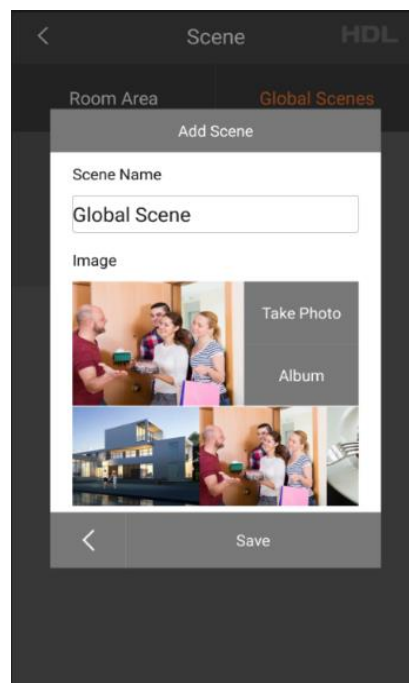
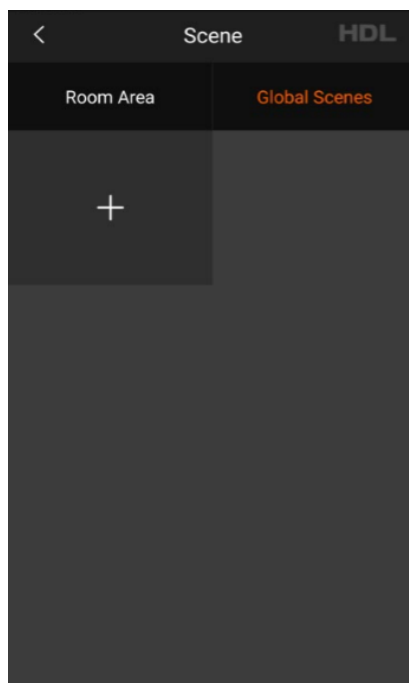
Global Scene: If you want to create a scene for the whole system, you can create global scene for managing it conveniently.

Room Area: If you want to create a scene for the current room, you can create room area

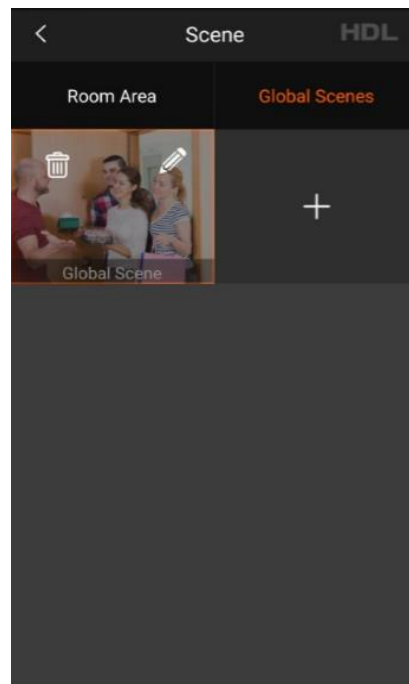
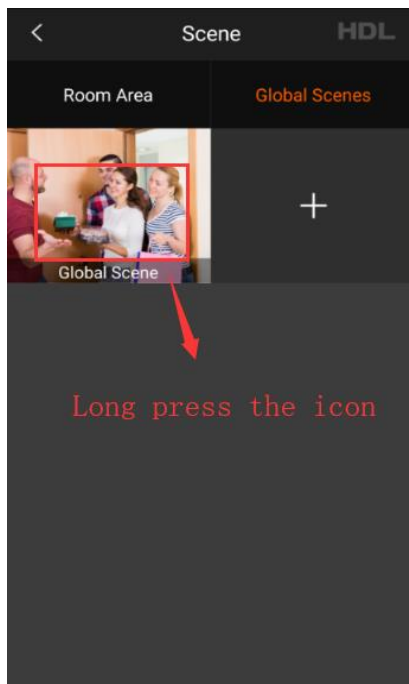
scene for managing it conveniently.



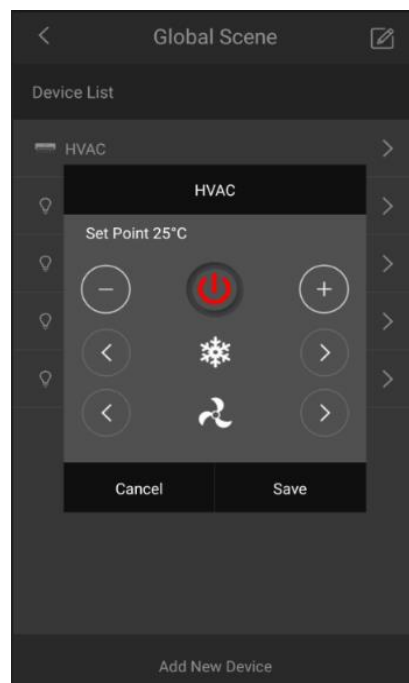
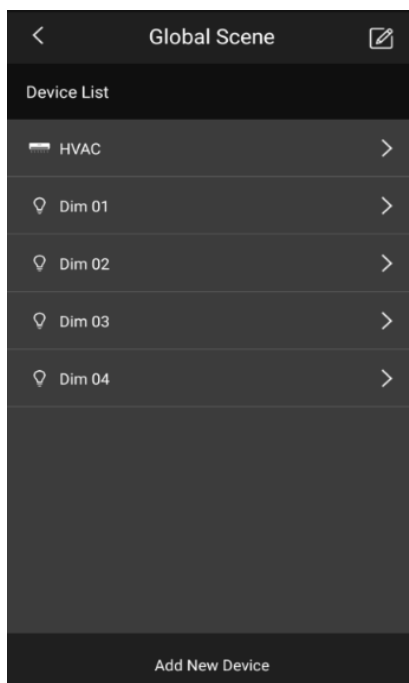
Touch the global scene button, enter the scenes page, then touch “+” button to create a global scene, fill in scene name, select background picture and save.



You can delete and program the scene by long pressing on the icon.



We can add device to current scene by touching “add device” button, and then program each device status in the current scene, for example, we can set the AC as “cool,low,25°C”.



4 Remote Access

Enable the remote function of the IP Module, if connect successfully, it will show you a tip "Remote Connection Successful"; otherwise, it will show you a tip "Network connection unavailable". It needs three conditions to remote access.

1. The IP module connect to the Internet, and enable the remote function. Please refer to the following picture to enable the remote function. Need to select remote server type, fill in the project name, user name and group name, password. The preferred server address should be 115.29.251.24, port 9999. For the alternate, just fill in 0.0.0.0 IP address, port 9999.

The screenshot displays the configuration interface for the IP module, titled "42-0\1 IP". It is divided into two main sections: "Basic Setup" and "Connection preferences".

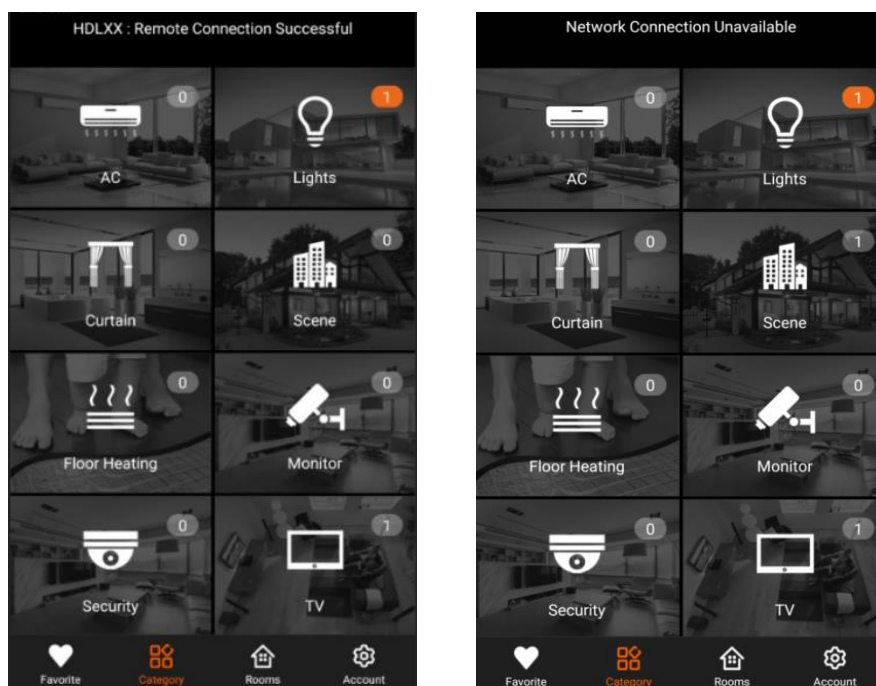
Basic Setup:

- Filter: RJ45—>485
- IP: 192 . 168 . 2 . 55
- Router IP: 192 . 168 . 2 . 1
- IP MAC: 40 . 04 . 0F . F8 . 59 . A9
- Mask IP: 255 . 255 . 255 . 0
- Port: 6000
- ☐ DHCP
- ☐ Auto DNS
- DNS I: 0 . 0 . 0 . 0
- DNS II: 0 . 0 . 0 . 0
- Buttons: Read, Save

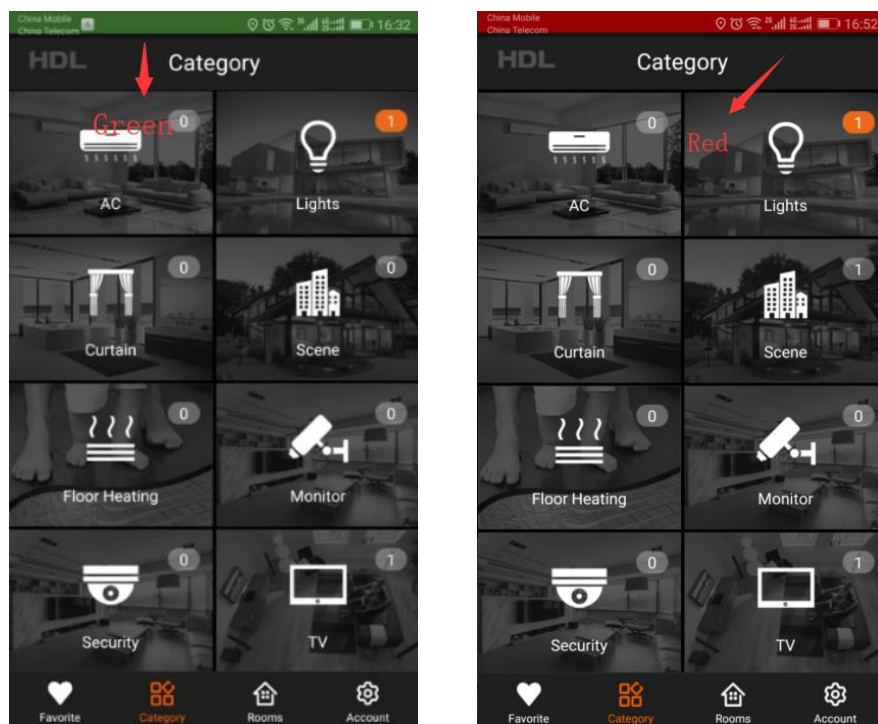
Connection preferences:

- Message: Your connection will automatically be detected. Only change these settings if you want to remote programming.
- Type: Remote Server (dropdown)
- Group name: HDLXX
- Project name: HDLXX
- User: HDLXX
- PWD: [masked]
- Preferred server: 115 . 29 . 251 . 24
- Port: 9999
- Alternate: 0 . 0 . 0 . 0
- Port: 9999
- Time zone: UTC-12 (dropdown) : 0
- ☐ Zone Enable
- Button: Save

2. You have registered an HDL ON account and login the account.
3. The phone has bound the MAC of the IP module to the residence and the IP module connected to the Internet.

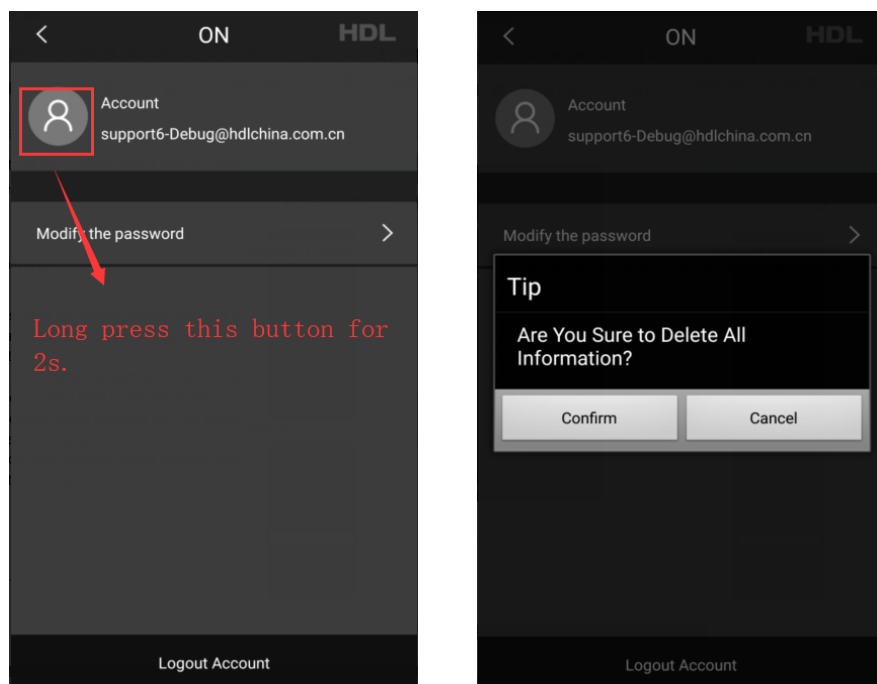


If remote connection is successful, the top area of your phone will be green background, if remote connection is failed, the top area of your phone will be red background.



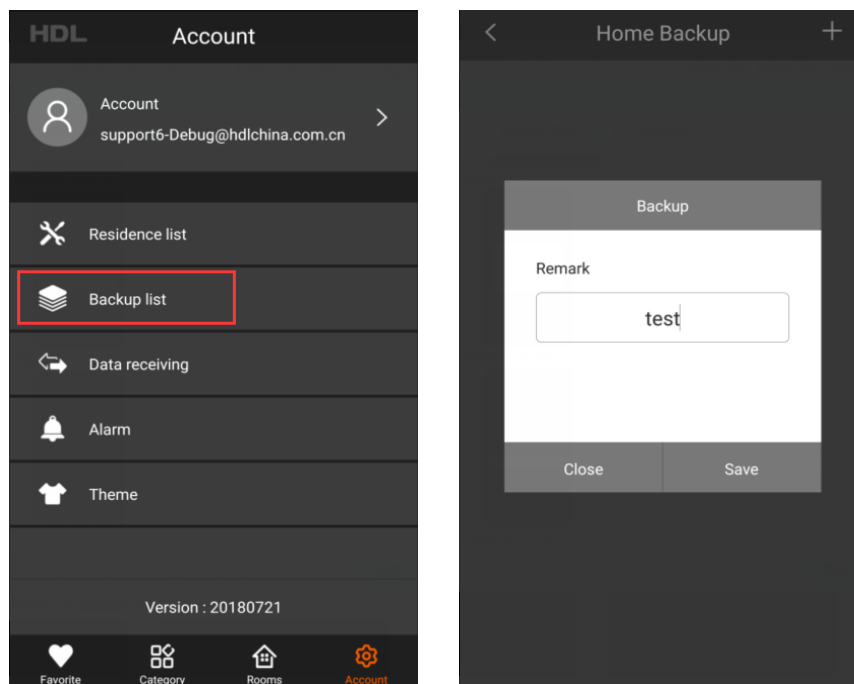
5 Delete All Project Data

You can delete all the current project data by pressing Account button for 2 seconds from account page.

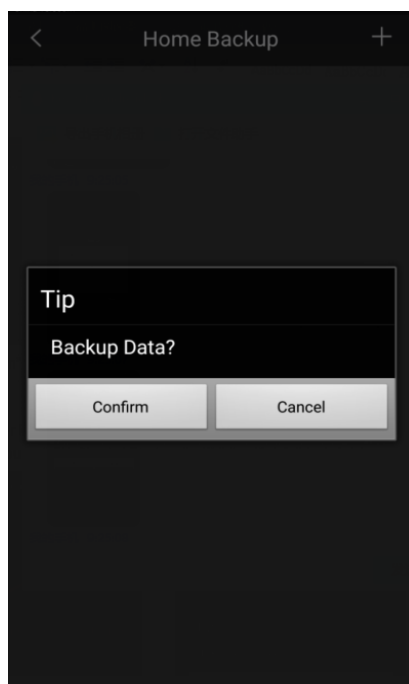


6 Backup List

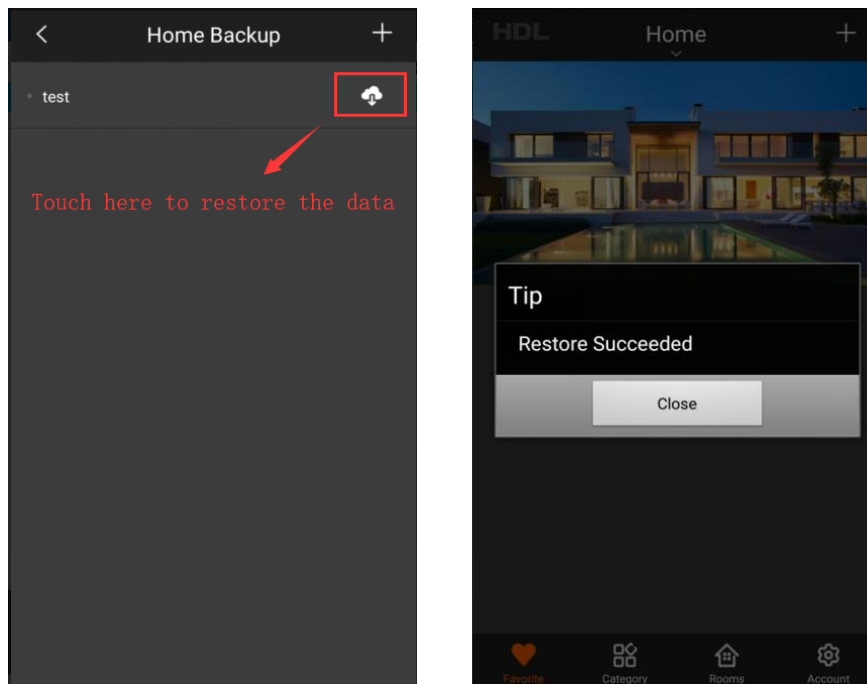
Backup: In the account page, touch “Backup list” button to enter backup page. Touch “+” button, fill in the backup file’s remark to create a backup file.



Touch “Confirm” button to backup the data.



Restore: Enter backup and restore page, touch the restore button to restore the data. And touch “close” button when it tips “Restore succeed”.

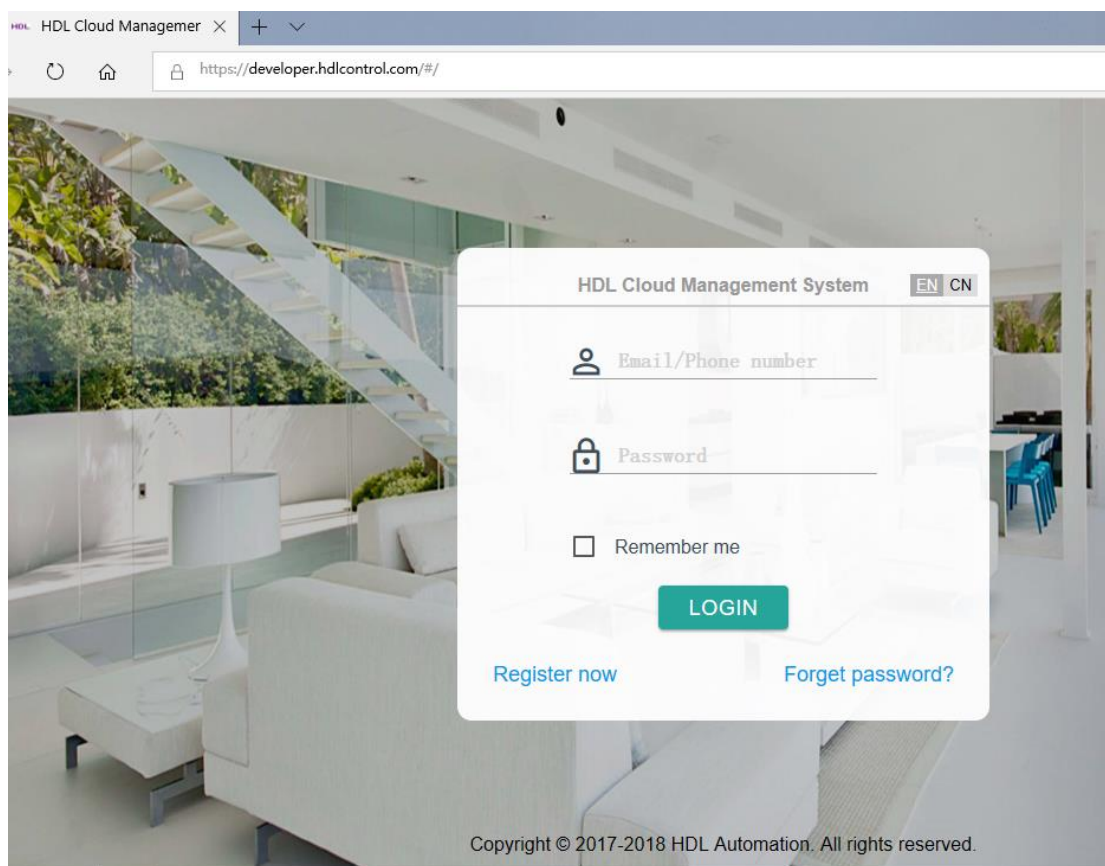


7 Alarm

HDL ON has the function of sending message. To achieve this function, We need register an account in HDL ON and configure some information in the website. The website address is <https://developer.hdlcontrol.com>.

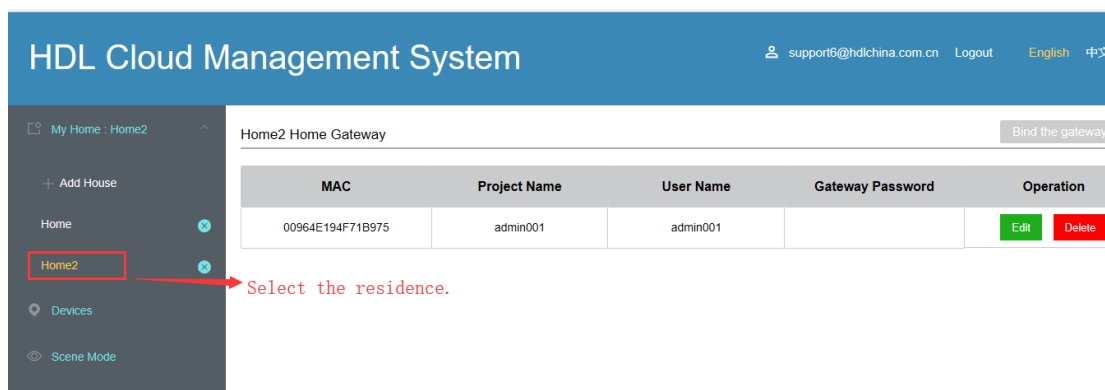
we can set it as below step:

1. Register an account in HDL ON or in the website. The following picture shows the page of "LOGIN" in the website. If you haven't registered an account in the HDL ON, you also can register account in the website. Click "Register now" and fill in the information in the new page.



2. Configure the information in the website.

① Select the residence that you want to send message to.



② Fill in the remote information from HDL Buspro Setup Tool 2 software.

Basic Setup Filter RJ45→>485

IP: 192 . 168 . 1 . 100
 Router IP: 192 . 168 . 1 . 1
 IP MAC: 40 . 03 . FC . 61 . A6 . EC
 Mask IP: 255 . 255 . 255 . 0
 Port: 6000

☒ DHCP Get IP Auto Success
☐ Auto DNS
 DNS I: 202 . 96 . 128 . 166
 DNS II: 202 . 96 . 128 . 86
 Read Save

Connection preferences

Your connection will automatically be detected. Only change these settings if you want to remote programming.

Type: Remote Server
 Group name: admin001
 Project name: admin001
 User: admin001 PWD: admin001
 Preferred server: 115 . 29 . 251 . 24 Port: 9999
 Alternate: 0 . 0 . 0 . 0 Port: 9999
 Time zone: UTC-12 : 0 ☐ Zone Enable
 Save

Active connections

IP	Port	Remain
115.29.251.24	9999	806

③ Create a new message.

HDL Cloud Management System support6@hddlchina.com.cn Logout English 中文

My Home : ssss
 Devices
 Scene Mode
 Room
 Message
 Notification Message
 History query

Notification Message

MessageID Message type SEARCH Add Message Delete

Number	SubnetID	DeviceID	MessageID	Message type	Push method:	Message content:	Operation
--------	----------	----------	-----------	--------------	--------------	------------------	-----------

1. Click "Message"
 2. Click "Notification Message"
 3. Click "Add Message"

④ Fill in the message information.

Attention: the subnet ID and device ID is come from the module which send the UV switch number to the IP module, and you can set any UV switch number from 1 to 254. For example, if I use the dry contact module send UV switch number to IP module, and the subnet ID and device ID of dry contact is 42, 2, then I should fill in 42, 2.

Message type: you can select "Hint" and "Alarm".

Push Model: you can select "Email alert" and "AppPusher".

Information content: fill in the message that you want to send to your HDL ON APP.

Message type SEARCH

SubnetID	DeviceID	MessageID	Message content:	Op
42	2	3		

Message type: ☐ Hint ☒ Alarm

Push ☐ Alarm via email ☒ App push message

method:

Message: The door is open.

content:

Subnet ID and device ID of the module which send the UV switch number to IP module.

UV switch number

3. Configure the information in the buspro 2 software.

After finish the above settings, when the IP module receive the “UV switch 3” command, then your phone will receive APP message. We can use a dry contact , a sensor or the other module send a “UV switch 3” command to the IP module, and then your phone will receive the APP message” The door is open.” For example, if the IP Module subnet ID is 42, Device ID is 0, then you can configure it as the following picture.

42-2\Dry Contact

Basic information

Subnet ID: 42 Device ID: 2 Name: Dry Contact

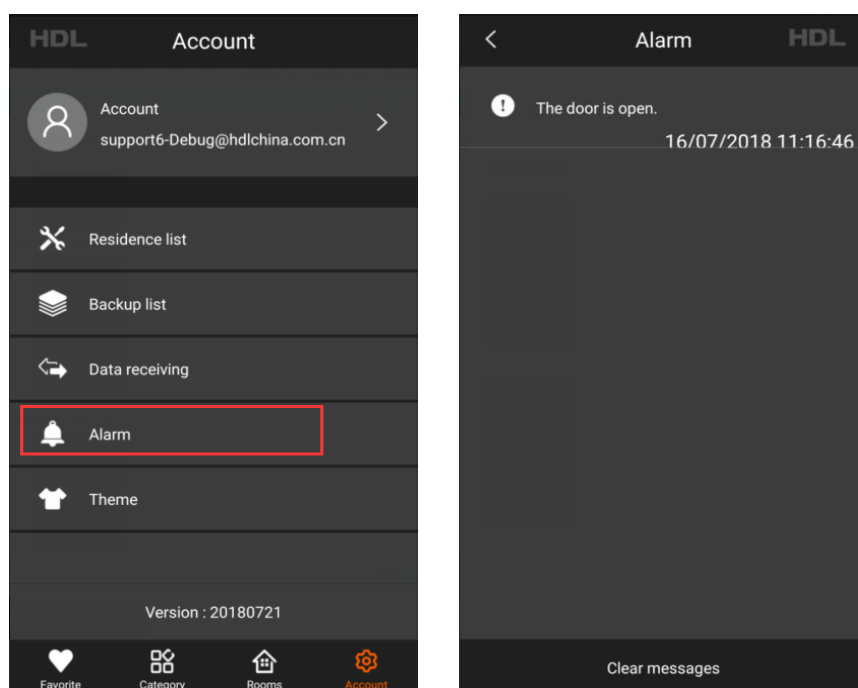
Current selected button: 1 ☒ ON ☐ OFF

Button type: Mechanical Switch Button name:

Targets

Input target number(1-99) From 1 To 5

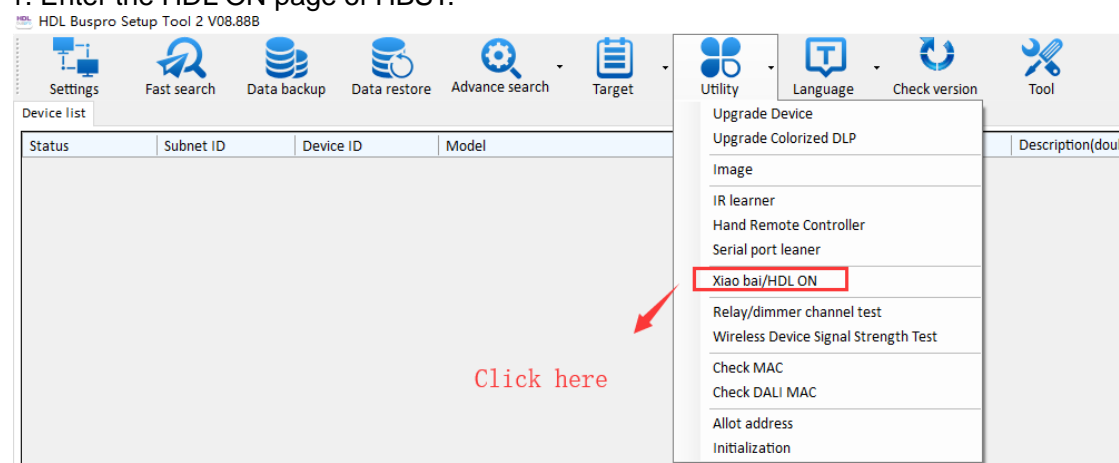
Index	Subnet ID	Device ID	Type	Param1	Param2	Param3	Param4
1	42	0	Universal Switch	3(Switch no.)	ON(Switch Status)	N/A	N/A
2	42	0	Invalid	N/A	N/A	N/A	N/A
3	42	0	Invalid	N/A	N/A	N/A	N/A
4	42	0	Invalid	N/A	N/A	N/A	N/A
5	42	0	Invalid	N/A	N/A	N/A	N/A



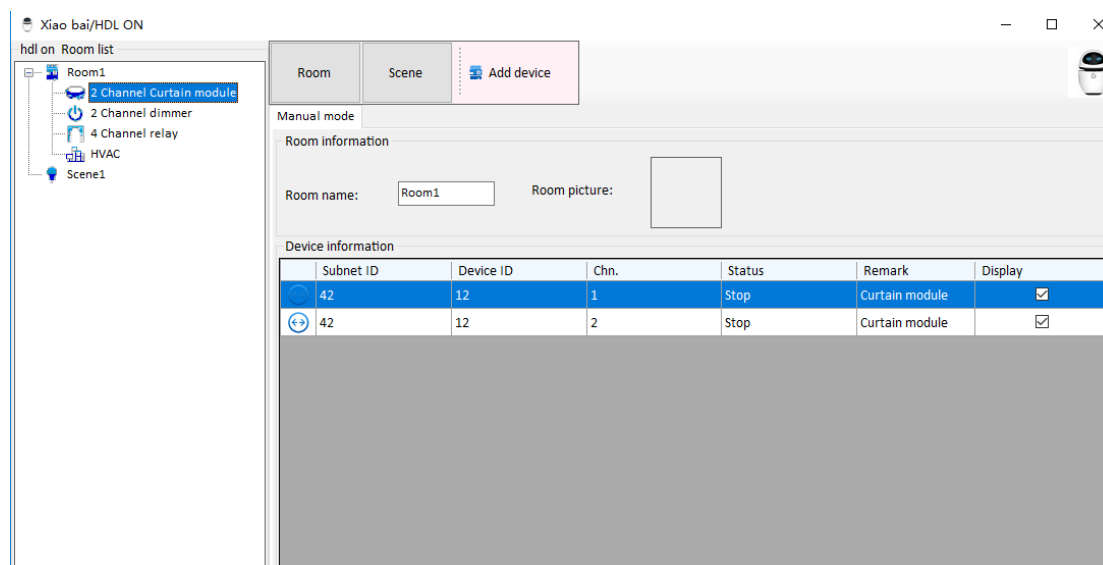
8 Upload Data

We can upload data to HDL ON from HBST. (Now support gateway module, curtain module, lighting module, AC module, floor heating module, music module and fan module and so on. If a module doesn't support HDL ON, for example SB-DN-DT0402, SB-DN-DT0601. After uploading the device data to HDL ON, we can control the device with HDL ON.

1. Enter the HDL ON page of HBST.

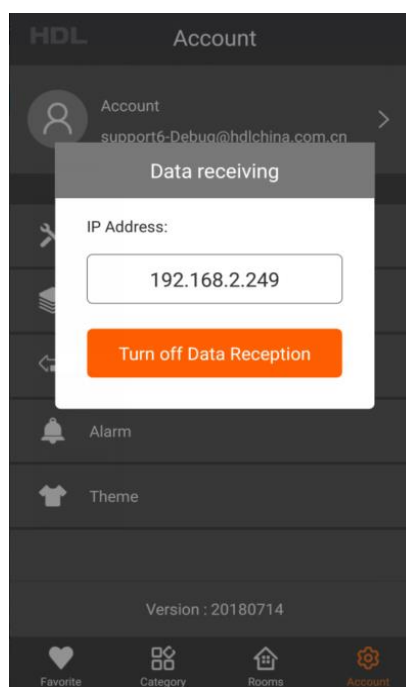
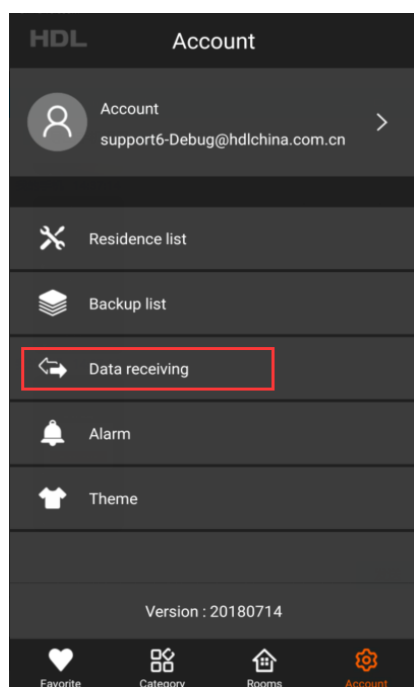


4. Configure the data in the HDL ON page. You can add devices to the room and create the scene.

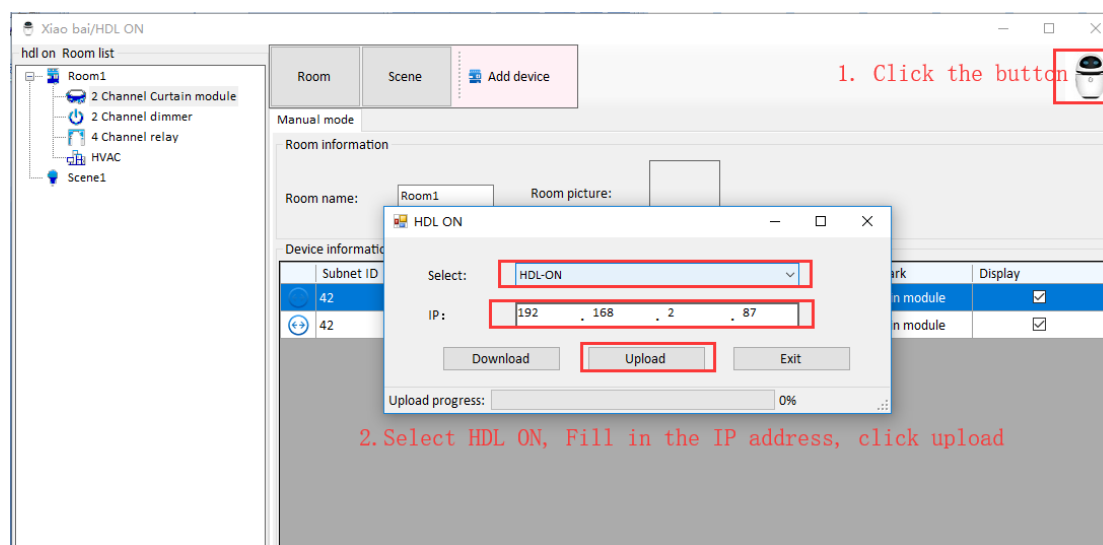


3. Upload data to HDL ON.

When uploading the data to HDL ON. The phone and the computer should connect to the same LAN(local area network). In the HDL ON account page, touch “Data Reception” to enable data reception.

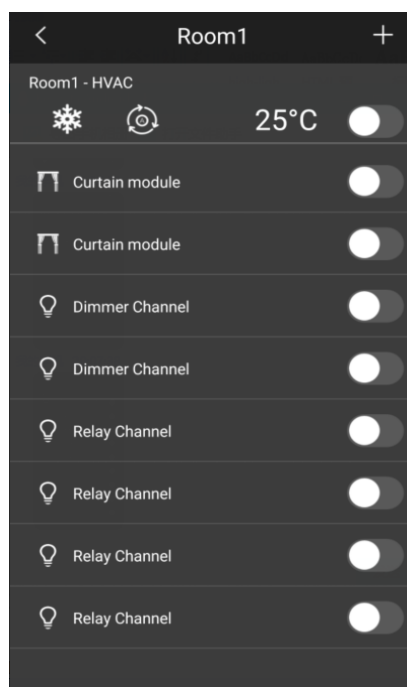
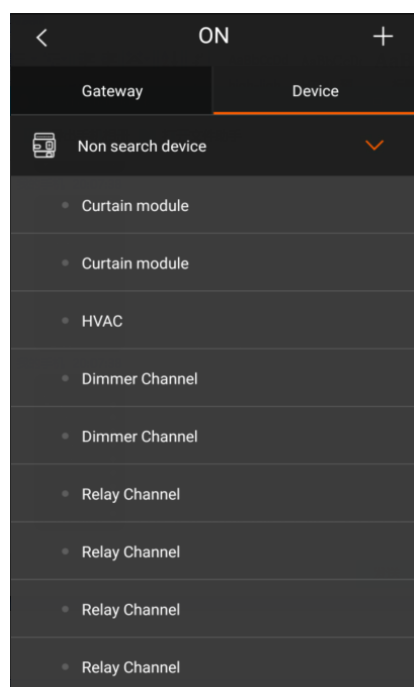


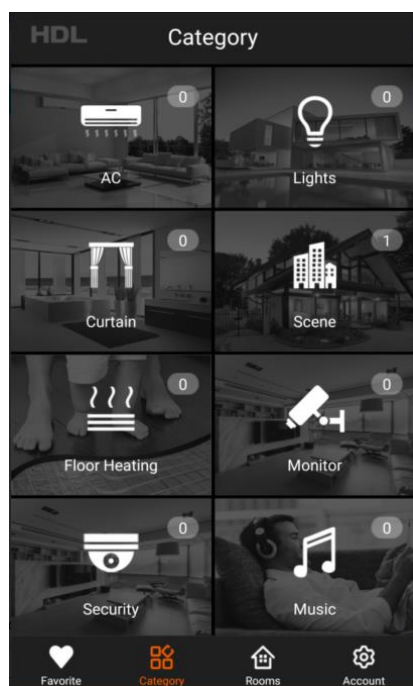
In the HDL ON page of HBST, click the HDL ON button on the top right corner, select HDL ON, fill in the phone IP in the new page, click “Upload” to upload data.



5. Configure the uploaded devices in the HDL ON.

All the added devices display in the device page of HDL ON, you also can find all the devices to in the room, you can control them in the category page.





9 NOTES

9.1 APP Download

IOS version: download the newest APP version by searching HDL ON in the Apple Store

Android version: download the newest APP version by searching HDL ON in the Google Play

9.2 Supported Device and Firmware Version

Not all devices are supported by HDL ON, please make sure that it is supported by HDL ON before control it with HDL ON. Now the below lists show the devices and the corresponding firmware versions that can be programmed by HDL ON

1. Wired Devices List

S/N	Model Number	Firmware Version
1	HDL-MD0206.432	HDL_V04.03U_2017/05/10
2	HDL-MD0403.432	HDL_V04.03U_2017/05/10
3	HDL-MD0602.432	HDL_V04.03U_2017/05/10
4	HDL-MDT0203.433	HDL_V04.03U_2017/05/10
5	HDL-MDT04015.433	HDL_V04.03U_2017/05/10
6	HDL-MDT0601.433	HDL_V04.03U_2017/05/10

7	HDL-MR0416.431	HDL_V04.10U_2016/05/23
8	HDL-MR0816.432	HDL_V04.10U_2016/05/23
9	HDL-MR1216.433	HDL_V04.10U_2016/05/23
10	HDL-MR0410.431	HDL_V04.10U_2016/05/23
11	HDL-MR0810.432	HDL_V04.10U_2016/05/23
12	HDL-MR1210.433	HDL_V04.10U_2016/05/23
13	HDL-MR1610.433	HDL_V04.10U_2016/05/23
14	HDL-MRDA0610.432	HDL_V04.02U_2017/05/04
15	HDL-MDLED0605.432	HDL_V04.03U_2016/08/12
16	HDL-MPTLC43.46	HDL_V04.31U_2016/11/31
17	HDL-MPTL14.46	HDL_V04.12U_2017/03/03
18	HDL-MPL8.48	HDL_V04.18U_2016/05/04
19	HDL-MPL8.46	HDL_V04.18U_2016/05/04
20	HDL-MPL8.48.FH	HDL_V04.18U_2016/05/04
21	HDL-MPT1.48	HDL_V05.07U_2016/05/23
22	HDL-MPT2.48	HDL_V05.07U_2016/05/23
23	HDL-MPT3.48	HDL_V05.07U_2016/05/23
24	HDL-MPT4.48	HDL_V04.20U_2016/05/23
25	HDL-MPT2.46	HDL_V04.20U_2016/05/23
26	HDL-MPT4.46	HDL_V04.20U_2016/05/23
27	HDL-MPT6.46	HDL_V04.20U_2016/05/23
28	HDL-MZBOX.20	HDL_V05.05U_2016/04/26
29	HDL-MZAP.20	HDL_V05.05U_2016/04/26
30	HDL-MZDN.432A	HDL_V06.04U_2016/12/08
31	HDL-MW02.431	HDL_V04.00U_2016/07/08
32	HDL-MVSM45B.12	HDL_V02.00U_2016/10/08
33	HDL-MWM70B.22	HDL_V01.06U_2016/07/08
34	HDL-MAC01.431	HDL_V03.11U_2016/04/05
35	HDL-MFH06.432	HDL_V04.30U_2016/04/07
36	HDL-MIRC04.40	HDL_V05.14U_2016/06/29
37	HDL-MBUS01IP.431	HDL_V05.13U_2018/02/25
38	SB-DN-48DMX	HDL_V04.04U_2017/05/05

2. Wireless Devices List

S/N	Model Number	Firmware Version
1	HDL-MPD01-RF.18	HDL_V01.29U_2017/02/20
2	HDL-MPR01-RF.18	HDL_V01.28U_2016/12/27
3	HDL-MPR02-RF.18	HDL_V01.29U_2017/01/21
4	HDL-MPC01-RF.18	HDL_V01.29U_2017/05/09
5	HDL-MPL8-RF.18	HDL_V01.28U_2017/03/07
6	HDL-MPL8-RF.16	HDL_V01.28U_2017/03/07

7	HDL-MP2B-RF.18	HDL_V01.28U_2017/01/18
8	HDL-MP4B-RF.18	HDL_V01.28U_2017/01/18
9	HDL-MP6B-RF.18	HDL_V01.28U_2017/01/18
10	HDL-MP8B-RF.18	HDL_V01.28U_2017/01/18
11	HDL-MP2B-RF.16	HDL_V01.28U_2017/01/18
12	HDL-MP4B-RF.16	HDL_V01.28U_2017/01/18
13	HDL-MP6B-RF.16	HDL_V01.28U_2017/01/18
14	HDL-MP8B-RF.16	HDL_V01.28U_2017/01/18
15	HDL-MPT1-RF.18	HDL_V04.28U_2017/03/09
16	HDL-MPT2-RF.18	HDL_V04.28U_2017/03/09
17	HDL-MPT3-RF.18	HDL_V04.25U_2016/08/09
18	HDL-MPT4-RF.18	HDL_V04.28U_2017/03/09
19	HDL-MPT1-RF.16	HDL_V04.28U_2017/03/09
20	HDL-MPT2-RF.16	HDL_V04.28U_2017/03/09
21	HDL-MPT4-RF.16	HDL_V04.28U_2017/03/09
22	HDL-MP01R-RF.18	HDL_V01.28U_2017/01/18
23	HDL-MP02R-RF.18	HDL_V01.28U_2017/01/18
24	HDL-MP03R-RF.18	HDL_V01.28U_2017/01/18
25	HDL-MP04R-RF.18	HDL_V01.28U_2017/01/18
26	HDL-MPE04-RF.18	HDL_V02.28U_2016/12/22
27	HDL-MWM70-RF.12	HDL_V01.28U_2016/12/27
28	HDL-MIR01R-RF.10	HDL_V04.28U_2017/01/11
29	HDL-MCIP-RF02.10	HDL_V02.30U_2017/12/27