

HDL[®]



RS232 Converter
HDL-MRS232.431

Description

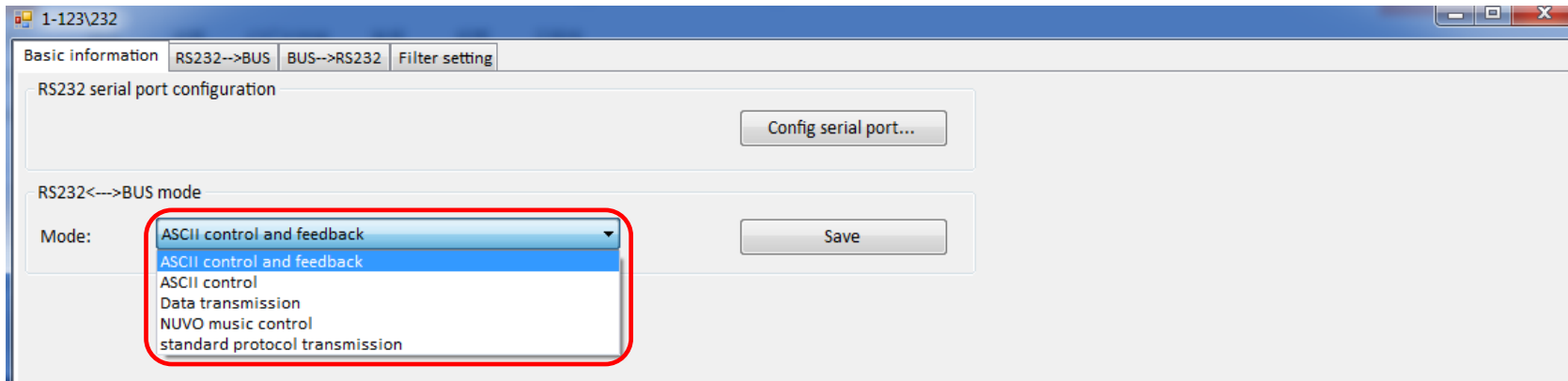
HDL-MRS232.431 is the converter between buspro and RS232/485 system, realize that control the RS232/485 system from buspro system, and vice versa.



Function

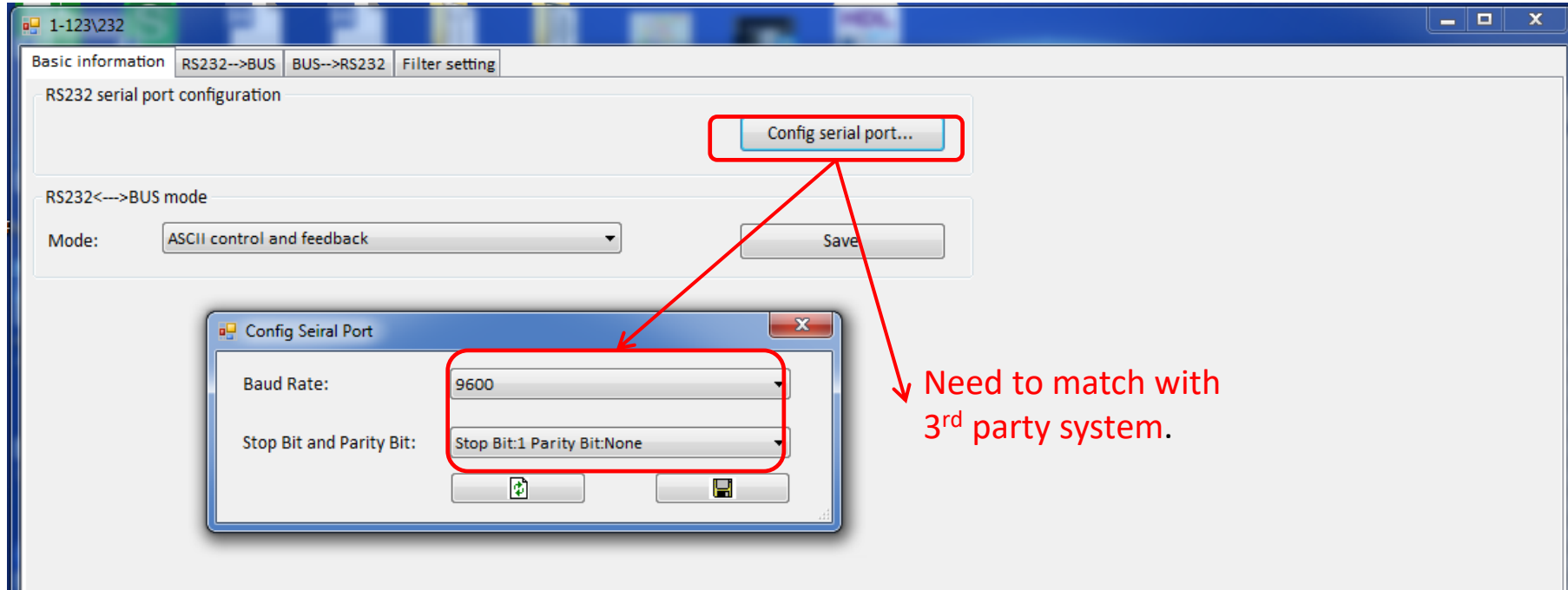
- 2 control way:
 - RS232(ASCII Code or HEX) -> Buspro
 - RS232(ASCII Code or HEX) <- Buspro
- Support ASCII code and hexadecimal
- 24 Characters ASCII length.
- RS232 interface works in all baud rates: 2400, 4800, 9600, 14400, 19200, 38400, 57600, 115200 bps
- Send and receive ASCII command
- It can receive 99 ASCII/HEX to trigger different targets

Basic information



HDL is adding more and more protocols in it, so it is possible that customers don't need to spend much time to configure it but just select the built-in protocol .

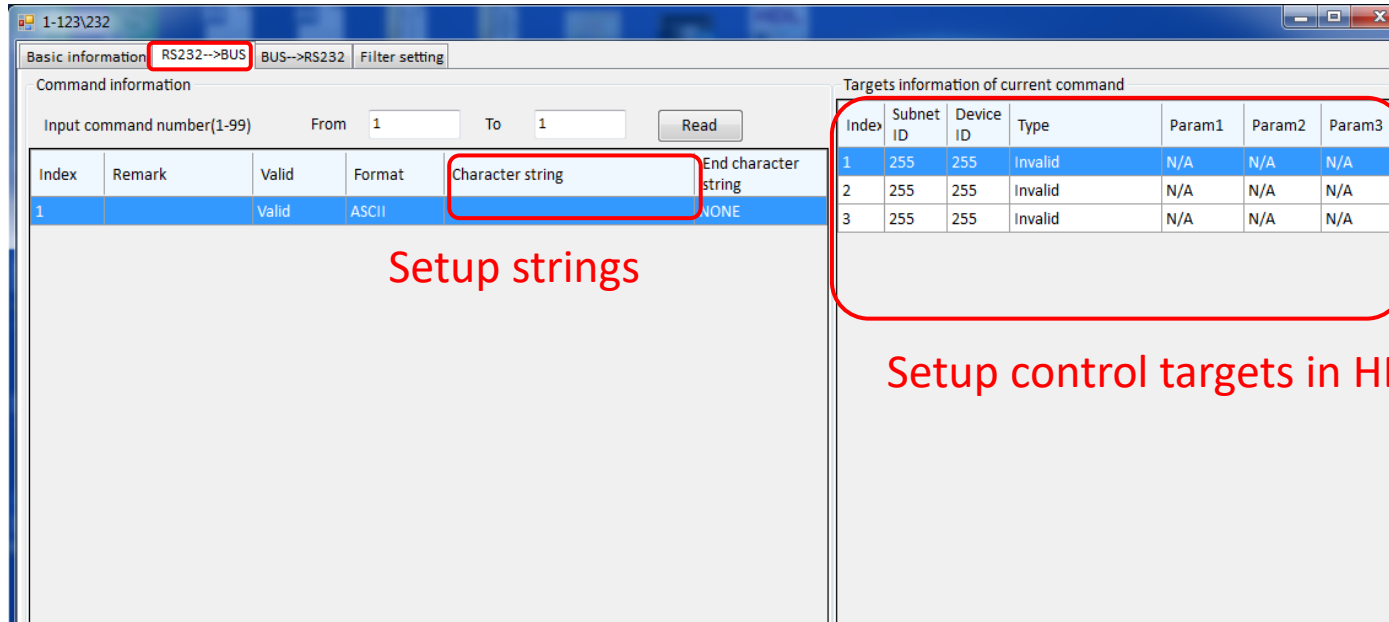
Config serial port



RS232→HDL Buspro

RS232→HDL Buspro:

It can set up to 200 strings and 20 targets for each string.



The screenshot shows the HDL Buspro software interface. The window title is "1-123\232". The "Basic information" tab is selected, showing "RS232-->BUS" and "BUS-->RS232". The "Command information" section includes "Input command number(1-99)" with "From" and "To" both set to 1, and a "Read" button. Below this is a table for setting up strings:

| Index | Remark | Valid | Format | Character string | End character string |
|-------|--------|-------|--------|------------------|----------------------|
| 1 | | Valid | ASCII | | NONE |

The "Character string" column header is highlighted with a red box. Below the table, the text "Setup strings" is written in red.

The "Targets information of current command" section contains a table:

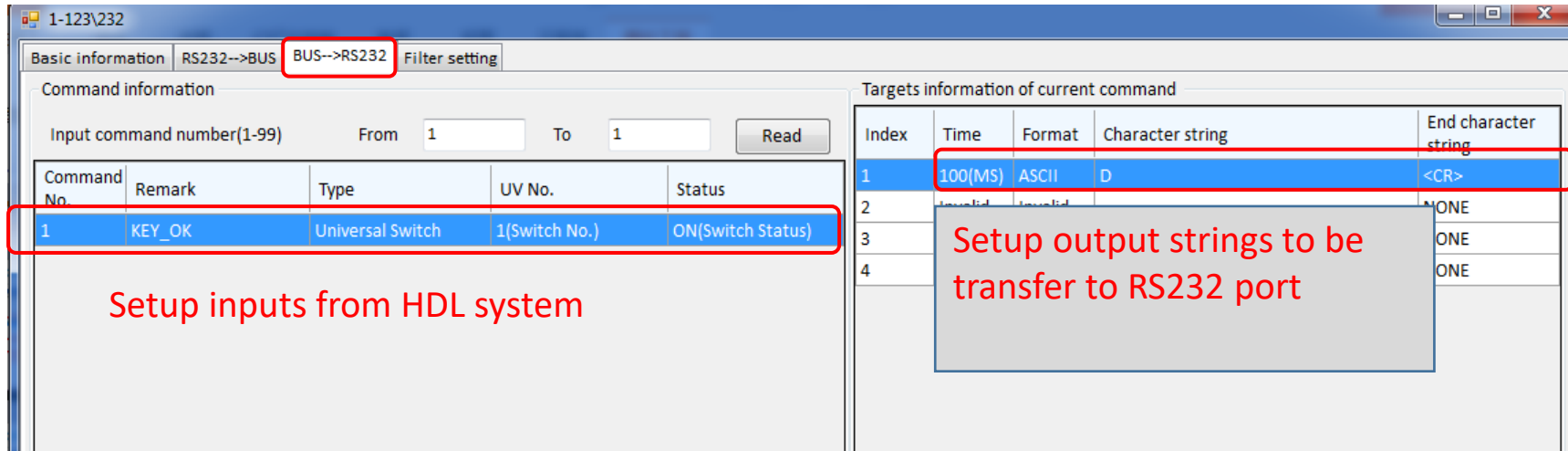
| Index | Subnet ID | Device ID | Type | Param1 | Param2 | Param3 |
|-------|-----------|-----------|---------|--------|--------|--------|
| 1 | 255 | 255 | Invalid | N/A | N/A | N/A |
| 2 | 255 | 255 | Invalid | N/A | N/A | N/A |
| 3 | 255 | 255 | Invalid | N/A | N/A | N/A |

The entire "Targets information" table is enclosed in a red box. Below it, the text "Setup control targets in HDL system." is written in red.

HDL buspro→RS232

HDL Buspro→RS232:

It can set up to 200 strings and 20 targets for each string.



The screenshot displays the HDL software interface for configuring a command. The window title is "1-123\232". The "Basic information" tab is active, showing "RS232-->BUS" and "BUS-->RS232" (the latter is highlighted with a red box). The "Command information" section includes "Input command number(1-99)" with "From" and "To" fields both set to "1", and a "Read" button. Below this is a table of command information:

| Command No. | Remark | Type | UV No. | Status |
|-------------|--------|------------------|---------------|-------------------|
| 1 | KEY_OK | Universal Switch | 1(Switch No.) | ON(Switch Status) |

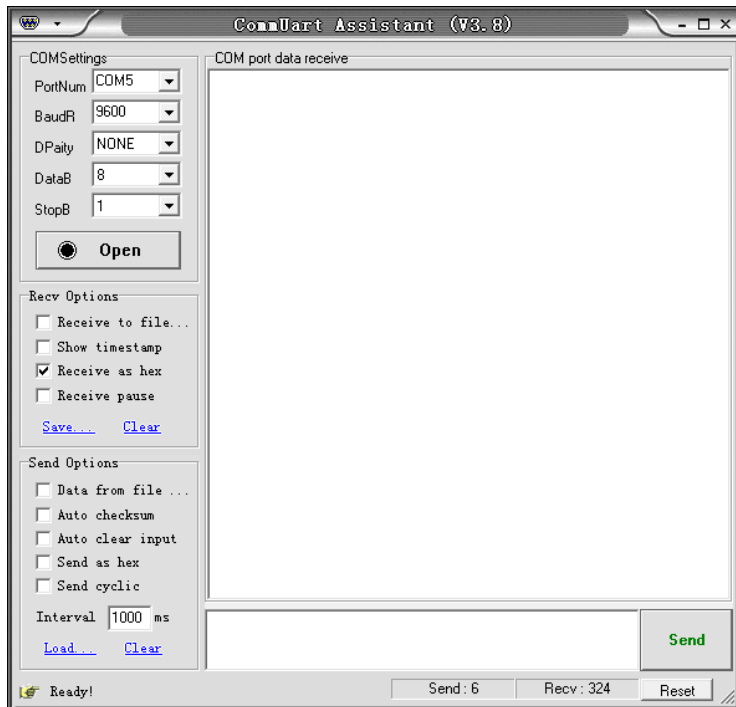
This row is highlighted with a red box. Below the table, the text "Setup inputs from HDL system" is written in red. To the right, the "Targets information of current command" table is shown:

| Index | Time | Format | Character string | End character string |
|-------|---------|---------|------------------|----------------------|
| 1 | 100(MS) | ASCII | D | <CR> |
| 2 | Invalid | Invalid | | NONE |
| 3 | | | | ONE |
| 4 | | | | ONE |

The first row of this table is highlighted with a red box. A red text box with a grey background is overlaid on the table, containing the text "Setup output strings to be transfer to RS232 port".

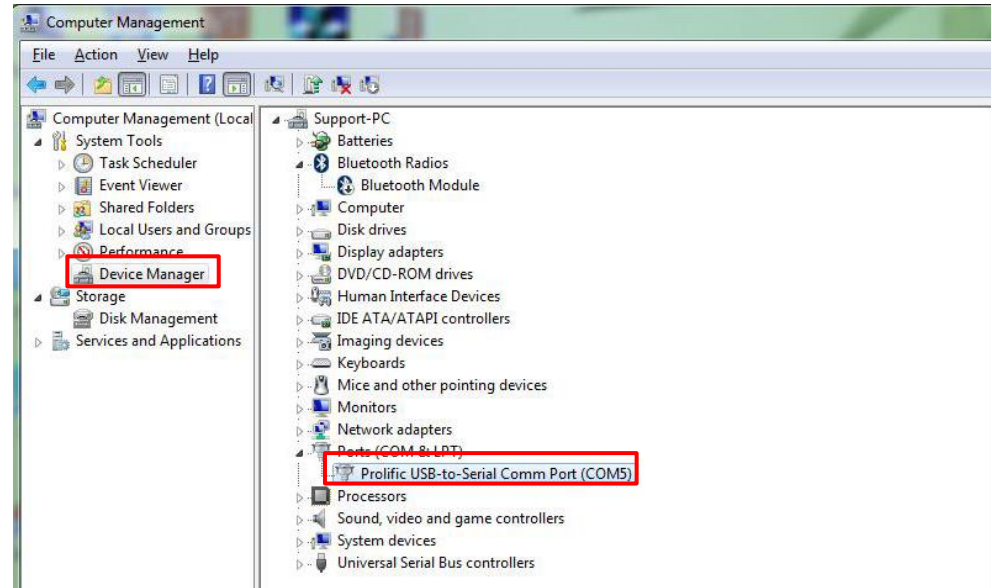
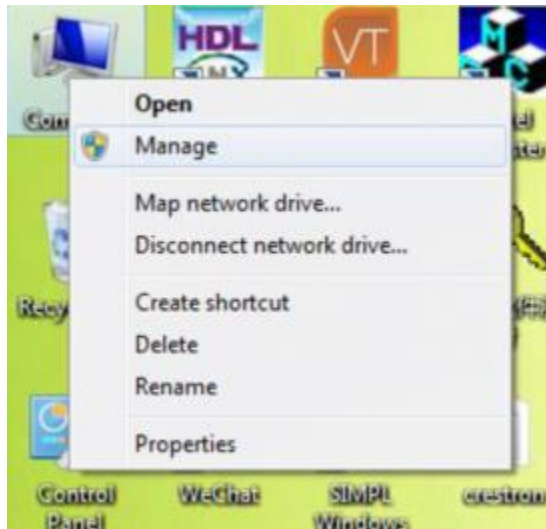
Tool

Using a tool to test the function (e.g., CommUart.exe)



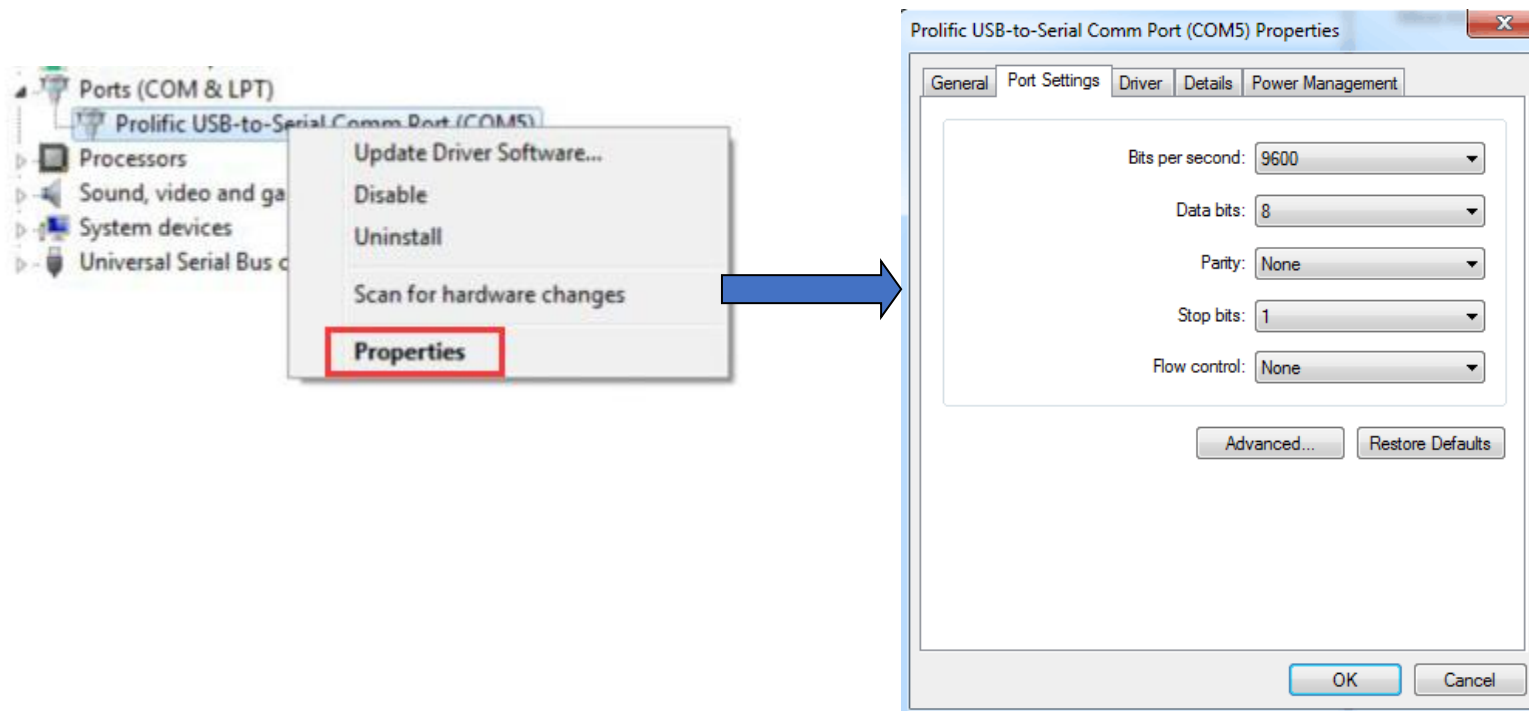
Tool

Check the COM port



Tool

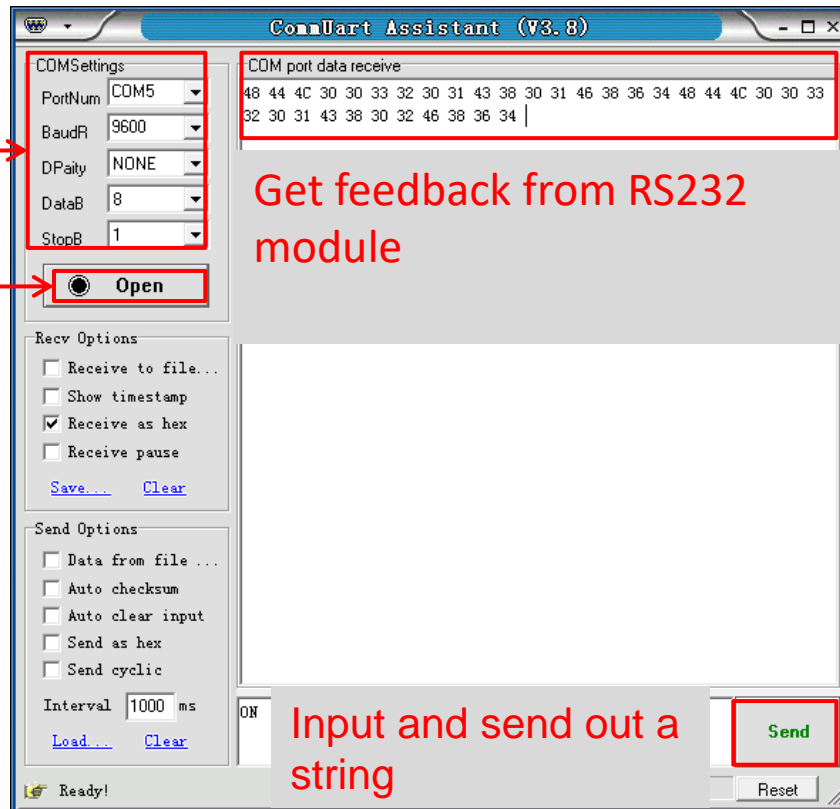
Configure the COM port



Tool

Fill in info of COM port according to last page

Enable the COM port



HDL[®]

Serious about smart buildings.