

HDL[®]



Gateway
HDL-MBUS01IP.431

Gateway Introduction

HDL-MBUS01IP.431 is the gateway between HDL Buspro system and Ethernet. It can realize the bidirectional data transmission between HDL Buspro and Ethernet.



Gateway Introduction

Setting of Network Parameter :

1-port IP interface has a default IP-192.168.10.250 and 6000 for port. Please change the user PC IP address into the same IP segment.

Steps for change IP address :

1. Modify the IP address of the user PC into 192.168.10.** (** means any) .
2. Run the 'HDL Buspro Setup tool2', find the device, change the IP address into the same IP segment of the user PC. Finish and save.
3. Change the IP address of the user PC back to previous IP.
4. Power the device off, then the new IP address will be available after power on.

Gateway Function

- ◆ Bidirectional data exchange between HDL Buspro and Ethernet.
- ◆ Supports local control, p2p control, remote control (local control by default)
- ◆ Allows maximum 4 devices to connect this module for remote control, such as iPad, iPhone, Touchlife, HDL Buspro software and so on.
- ◆ Intelligent data exchange , minimize data traffic.
- ◆ Communication: HDL Buspro, IP network.

Software Configuration

1-0网关

Basic Setup Filter RJ45-->485

IP: 192 . 168 . 10 . 211

Router IP: 192 . 168 . 10 . 1

IP MAC: 40 . 04 . 00 . 0D . FD . C8

Mask IP: 255 . 255 . 255 . 0

Port: 6000

DHCP

Auto DNS

DNS I: 16 . 0 . 0 . 0

DNS II: 0 . 0 . 0 . 0

Read Save

Connection preferences

Your connection will automatically be detected. Only change these settings if you want to remote programming.

Type: Remote Server

Group name: JJJ

Project name: JJJJ

User: JJJ PWD: 123456

Preferred server: 115 . 29 . 251 . 24 Port: 9999

Alternate: 255 . 255 . 255 . 255 Port: 0

Zone Enable

Save

Active connections

IP	Port	Remaining
----	------	-----------

label1

Refresh

IP Port Last Enter

Read Log

Device : | 1-0网关

Change the default IP and IP MAC, to avoid possible conflict.
Default IP:192.168.10.250
Default MAC:H-D-L-85-85-85

Local Network

Connection preferences

Your connection will automatically be detected. Only change these settings if you want to remote programming.

Type: Remote Server
Local Network
P2P
Remote Server
URL

Group name:

Project name:

User: JJJ PWD: 123456

Preferred server: 115 . 29 . 251 . 24 Port: 9999

Alternate: 255 . 255 . 255 . 255 Port: 0

Time zone: UTC-12 : 0 Zone Enable

Save

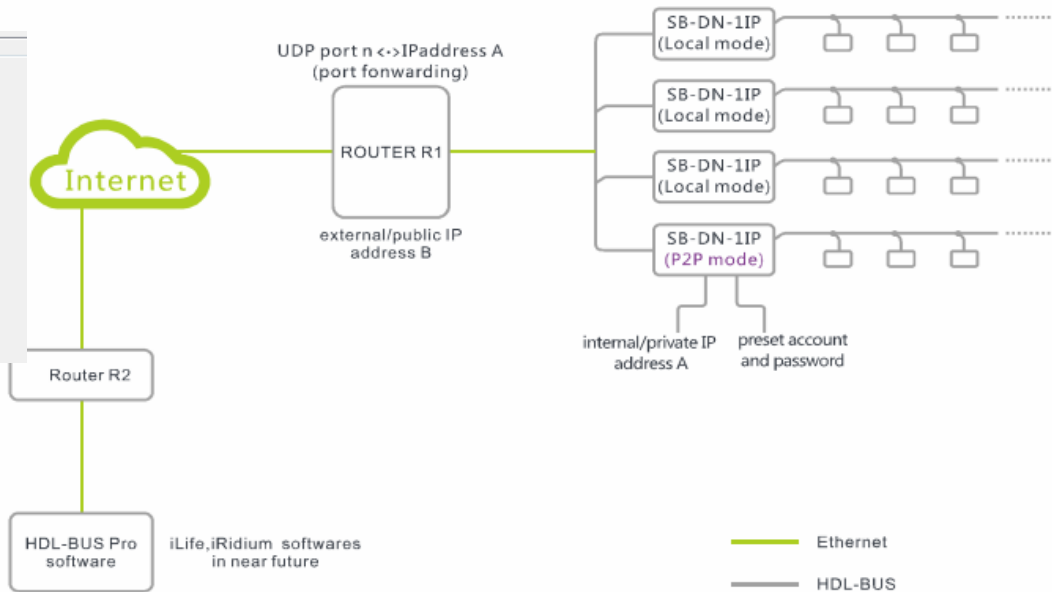
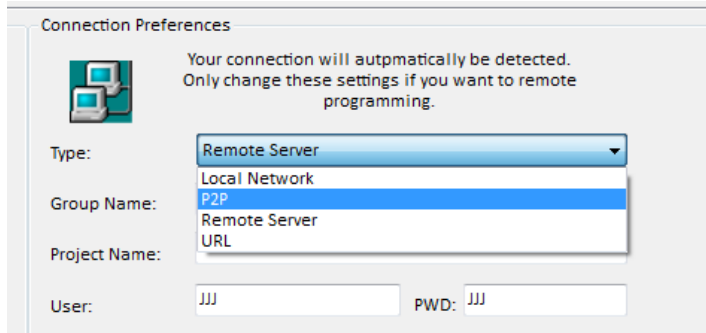
HDL-MBUS01IP.431 has 3 working types:

- ◆ Local Network
- ◆ P2P
- ◆ Remote Server

Local Network: Works as a normal HDL-MBUS01IP as it always be, a gateway between HDL Buspro and local Enternet. This mode doesn't have remote function.

P2P

P2P: In this mode, you are able to access the HDL Buspro system directly through Internet, without any help from HDL server.



Remote Server

Remote Server: This mode is suitable for both travelling programmer and end user to configure and control HDL Buspro system via Internet. Since a server is getting involved in this mode, no static public IP is needed for HDL Buspro system because the HDL-MBUS01IP in Remote Server mode will keep updating itself to the server, programmer and end user can always get info of the remote HDL MBUS01IP from the server and later access the HDL Buspro system directly.

Connection preferences

Your connection will automatically be detected. Only change these settings if you want to remote programming.

Type: Remote Server

Group name: Local Network

Project name: Remote Server

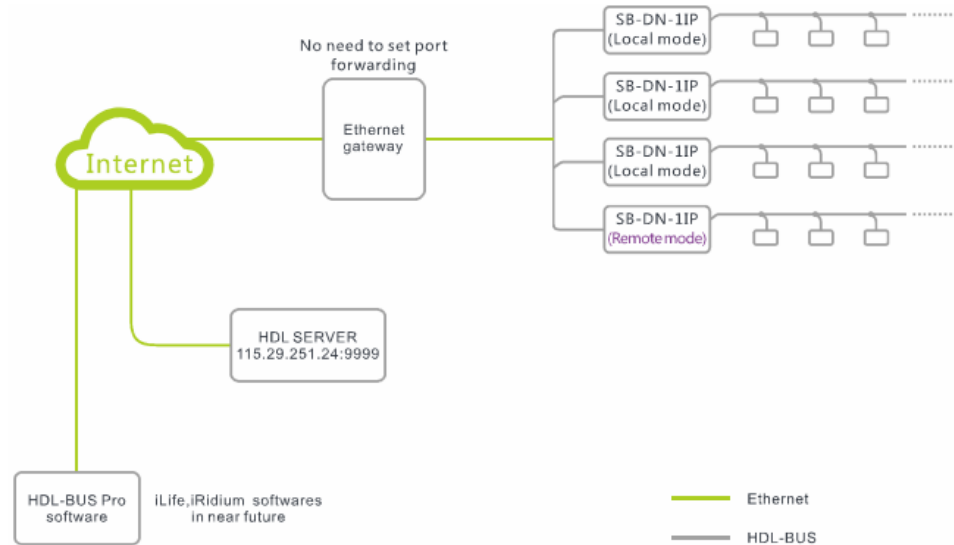
User: JJJ PWD: 123456

Preferred server: 115 . 29 . 251 . 24 Port: 9999

Alternate: 255 . 255 . 255 . 255 Port: 0

Time zone: UTC-12 : 0 Zone Enable

Save



Remote/Steps

Connection preferences

Your connection will automatically be detected. Only change these settings if you want to remote programming.

Type: Remote Server

Group name: Local Network
P2P
Remote Server

Project name: URL

User: JJJ PWD: 123456

Preferred server: 115 . 29 . 251 . 24 Port: 9999

Alternate: 255 . 255 . 255 . 255 Port: 0

Time zone: UTC-12 : 0 Zone Enable

Save

Step1: Set your Project Name, Group Name, User, PWD and click Apply.

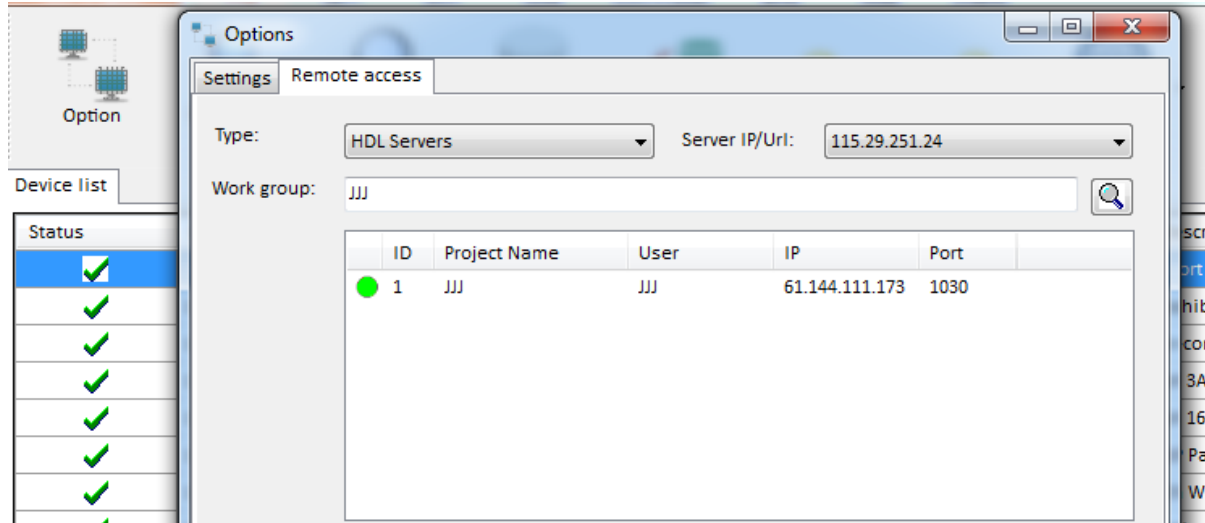
NOTE: HDL server has a fixed IP and port, 115.29.251.24:9999, do not change it, it is editable because HDL may change the server or help installation company to build their own servers in the future, in that case, the installation companies can fill in their own servers and ports.

The Interval value suggested to be 1-3m.

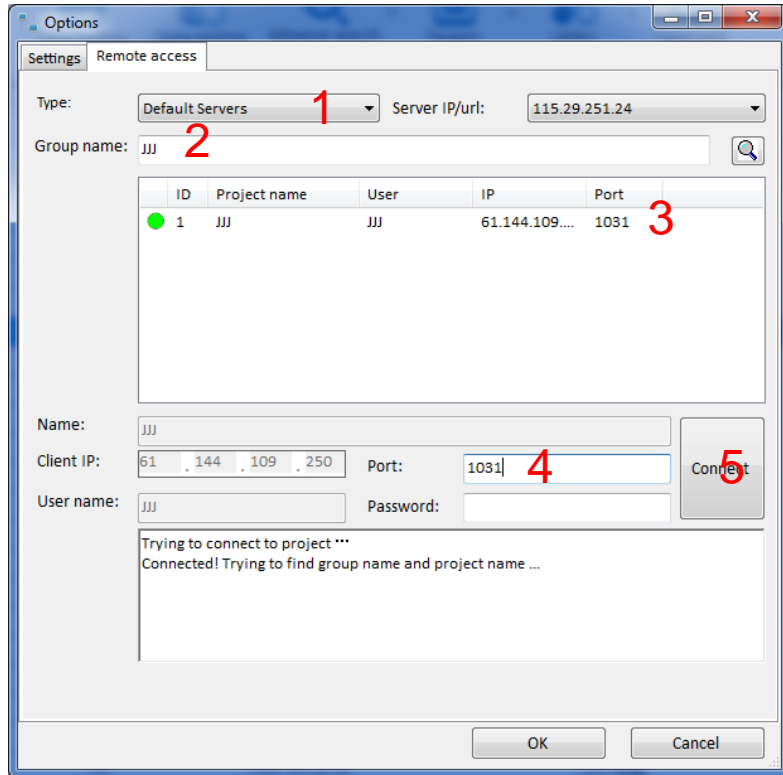
Remote/Steps

Step2:

Exit HDL Buspro Setup Tool and connect to another Internet access that has a different public IP for your PC/laptop, run the HDL Buspro Setup Tool again and select 'Options'.



Remote/Steps



Step3:

Search for the project in the pop up window, as the left picture.

(An installation company can have many projects in different sites).

Remote/Steps

HDL Buspro Setup Tool 2 V08.75B

Option Fast search Data backup Data restore Advance search Targets Utility Language Tool Check version Help

Device list

Status	Subnet ID	Device ID	Model	Name	Description[double click this column	Version
✓	1	132	HDL-MIRC01T.40	香港单1通道红外模块	Infrared signal emission,remote rece...	Unread
✓	1	188	SB-AC-Edge	香港单空调客房面板	Hotel panel only with AC	Unread
✓	1	189	HDL-MPPI3R.48	香港单3路空调底座	3CH Relay power interface	Unread
✓	1	233	HDL-MPL8.48	新音乐播放器DLP面板	DLP Panel with AC Music Clock Floor H...	Unread
✓	1	241	HDL-MDT0203.433	测试备注 + 241	2ch 3A Trailing Edge Dimming module	Unread
✓	1	244	HDL-MP01R.48	bbbb	1 Button Smart switch Digital Wall Pa...	Unread
✓	2	0	HDL-BN-4096	有线2	Bacnet<->HDL-BUS Data Converter	Unread
✓	3	0	HDL-MBUS01IP.431	有线3	1 port switchboard	Unread
✓	3	40	HDL-MDO206.432	2路6安可控硅	2ch 6A Leading Edge Dimming module	Unread
✓	3	41	HDL-MSP08M.4C	8合1	eight sensors in one	Unread
✓	3	41	HDL-MSP08M.4C	8合1	eight sensors in one	Unread
✓	3	42	HDL-MSM.431	安防模块	Advanced Security Controller	Unread
✓	3	43	HDL-MIRC01T.40	1通道红外发射模块	Infrared signal emission,remote rece...	Unread
✓	3	45	HDL-MDT0601.433	6路1安MOS管	6ch 1A Trailing Edge Dimming module	Unread
✓	3	46	HDL-MDO403.432	4路3安可控硅	4ch 3A Leading Edge Dimming module	Unread
✓	3	47	HDL-MPT4.46	4键触摸面板	4 Key touch panel with temperature	Unread
✓	3	49	HDL-MP2B.48	2长按键面板	2 keys multi-functional panel	Unread
✓	3	50	HDL-MFAN04.432	风扇调速器	Fan controller	Unread
✓	3	51	HDL-MGSM.431	GPRS模块	SMS Module II	Unread
✓	3	52	HDL-MP8B.46	8长按键面板	8 keys multi-functional panel	Unread
✓	3	53	HDL-MP02R.48	2按键圆键面板	2 Button Smart switch Digital Wall Pa...	Unread
✓	3	54	HDL-MPT02.48	2按键触摸面板	2 keys multi-functional panel	Unread
✓	3	55	HDL-MPL8.48	DLP液晶	DLP Panel with AC Music Clock Floor H...	Unread
✓	3	58	HDL-MWM70B.12	1路窗帘电机 (带从机)	1ch Window Curtain controller	Unread
✓	3	59	HDL-MWM470B.22	1路窗帘电机	1ch Window Curtain controller	Unread

Current select id: 115.29.251.24 Total device: 174 Online: 174 Offline: 0 Current Mode: Online mode

0K/s 66% 4.6K/s

Step4:

After you clicking the Apply button, the pop up window will exit automatically if it communicates with remote HDL Buspro system successfully, now you can get start to program the HDL Buspro system.

HDL[®]

Serious about smart buildings.