



# Tile Series Button Panel (Buspro) User Manual

Version: 1.0.0

Published on Jul. 5, 2019

## Content

|                                       |    |
|---------------------------------------|----|
| <b>Legal Statement</b> .....          | I  |
| <b>Update History</b> .....           | II |
| 1 Introduction.....                   | 1  |
| 2 Basic Setting.....                  | 3  |
| 3 Button Setting.....                 | 5  |
| 3.1 Button Mode Setting.....          | 5  |
| 3.2 Button Group Setting.....         | 5  |
| 3.3 Button Status Setting.....        | 6  |
| 3.4 Target Setting.....               | 7  |
| 3.4.1 Add Target.....                 | 8  |
| 3.4.2 Edit Target.....                | 8  |
| 4 Color Setting.....                  | 11 |
| 4.1 Button Status Color Setting ..... | 11 |
| 4.2 Local Color Library Setting ..... | 12 |
| 4.3 White Balance Adjustment .....    | 12 |
| 5 Sleep Group Setting .....           | 13 |

## Legal Statement

HDL has all the intellectual property rights to this document and contents thereof. Reproduction or distribution for third parties are prohibited without written authorization from HDL. Any infringement of HDL's intellectual property rights will be investigated the legal liability.

The contents of this document will be updated as the updates of product versions or other reasons. Unless otherwise agreed upon, this document is to be used as a guidance only. All the statements, information and recommendations in this document makes no warranty expressed or implied.

HDL Automation Co., Ltd.

## Update History

The form below contains the information of every update. The latest version contains all the updates of all former versions.

| No. | Version | Update Information | Date         |
|-----|---------|--------------------|--------------|
| 1   | V1.0.0  | Initial release    | Jul. 5, 2019 |
|     |         |                    |              |
|     |         |                    |              |
|     |         |                    |              |
|     |         |                    |              |

## 1 Introduction

Tile Series Button Panel, which includes 5 types, is specially designed for controlling smart devices.

This user manual takes 4 Buttons Panel A as an example to introduce the configuration process of Tile Button Panel in Buspro Setup Tool 2. The devices include:

- Tile Series Button Panel (Buspro)
- A computer with Buspro Setup Tool 2
- 1-Port Programming Gateway (HDL-MBUS01IP.431) connected to the router
- Dedicated Buspro cables

### Notice:

- ① Please refer to the datasheet attached to the product for the information of installation, wiring, specifications, etc.
- ② The pictures in this user manual are for reference only. The actual product should prevail.
- ③ The Button ID in this user manual is shown as Figure 1-1.



Figure 1-1 Button ID

- How to enter configuration page?

1. Connect the panel to the system, and open Buspro Setup Tool 2 in the computer.

2. Click “Fast Search”.
3. Double click the “Model” or “Description” column to enter configuration page, as shown in Figure 1-2, Figure 1-3.

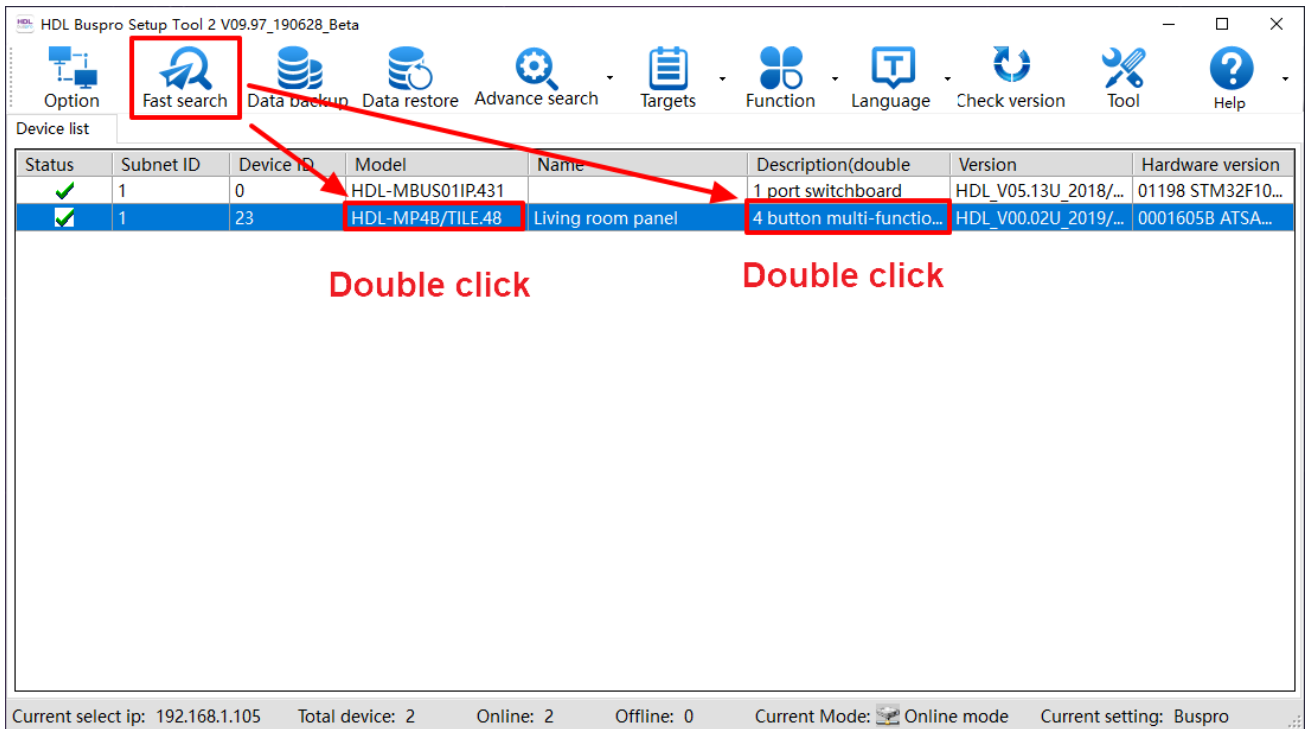


Figure 1-2 How to Enter Configuration Page

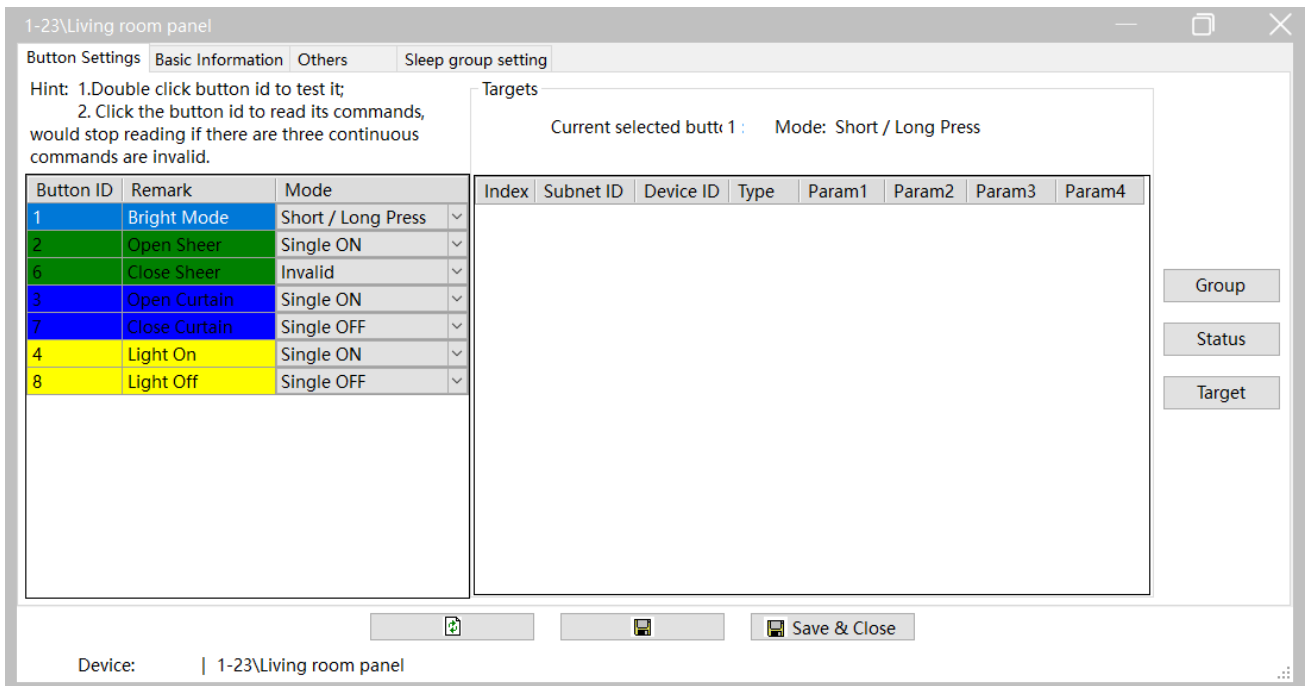


Figure 1-3 Configuration Page

## 2 Basic Setting

Click “Basic Information” in configuration page, as shown in Figure 2-1. This page includes the following setting options:

- ① **Indicator Intensity:** includes LCD backlight and status indicator
  - LCD backlight: means the backlight brightness in standby status.
  - Status indicator: means the indicator brightness when indicating status.
- ② **Press time setting:** includes the time setting of long press and double click.
  - Long Press: Keep pressing the button longer than the set time period, and the system will identify as “Long Press”. The range is from 0.3s to 25s.
  - Double Click: The time interval between two clicks shorter than the set time period will be identified as “Double Click”. The range is from 0.1s to 2s.
- ③ **Min. dimming value setting:** means the minimum dimming value. The light brightness will not decrease under this value during dimming operation.
- ④ **Auto Lock:** if enabled, the panel will be locked (NOT entering standby mode) in 20s after the last operation. Press Button 1 and 4 can unlock/lock the panel.
- ⑤ **Broadcast temperature:** Built-in temperature sensor in Tile Panel enables temperature detection. The temperature data, which can be adjusted with the slider, can be broadcast to corresponding device if the Subnet ID and Device ID is set.
- ⑥ **Standby display and page setting:** to enable/disable energy-saving mode, and related configuration. If energy-saving mode is enabled, the detailed configuration includes:
  - Delay: to set the time period between the last operation and entering the energy-saving mode.
  - LCD standby level: the backlight brightness in energy-saving mode
  - Indicator standby level: the indicator brightness in energy-saving mode
  - Trigger when wake up: if enabled, the target will be triggered when wake up the panel by pressing the button; if disabled, when the panel is in energy-saving mode, the first press will wake up the panel, and the second press is to trigger the target.

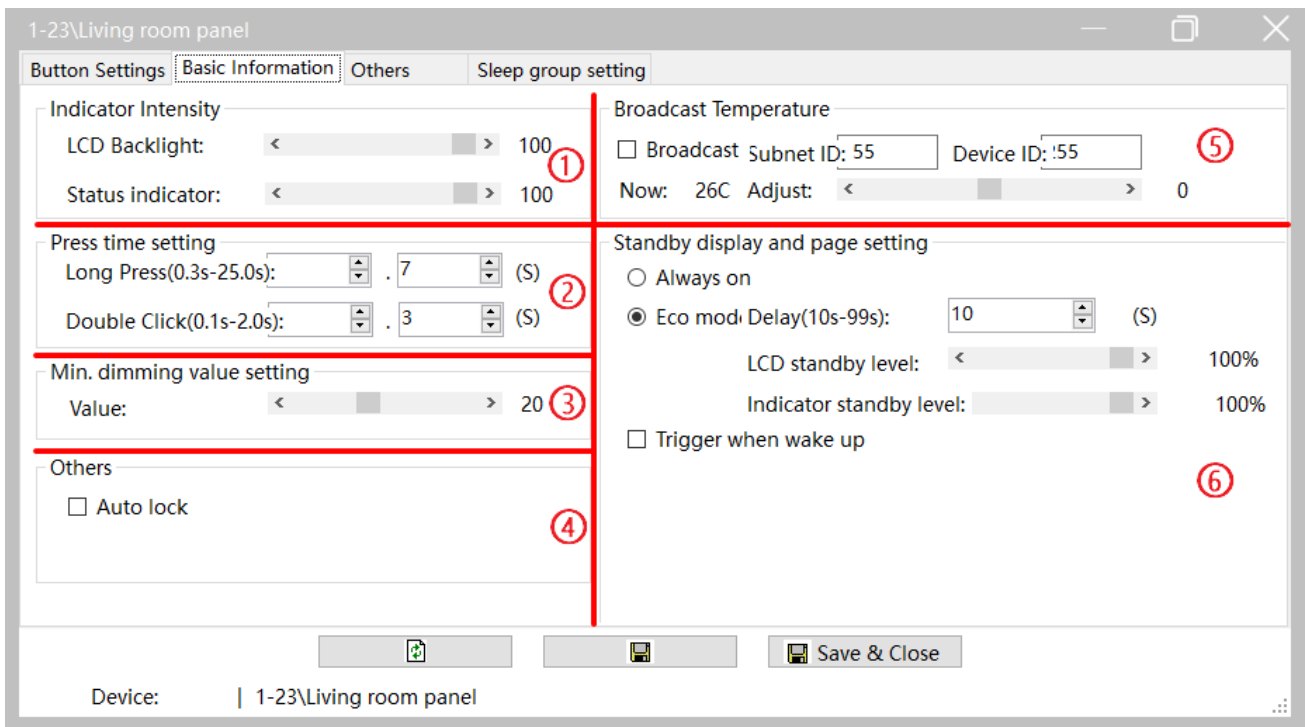


Figure 2-1 Basic Information Setting Page



### 3 Button Setting

“Button Setting” page will be opened by default in configuration page, as shown in Figure 3-1.

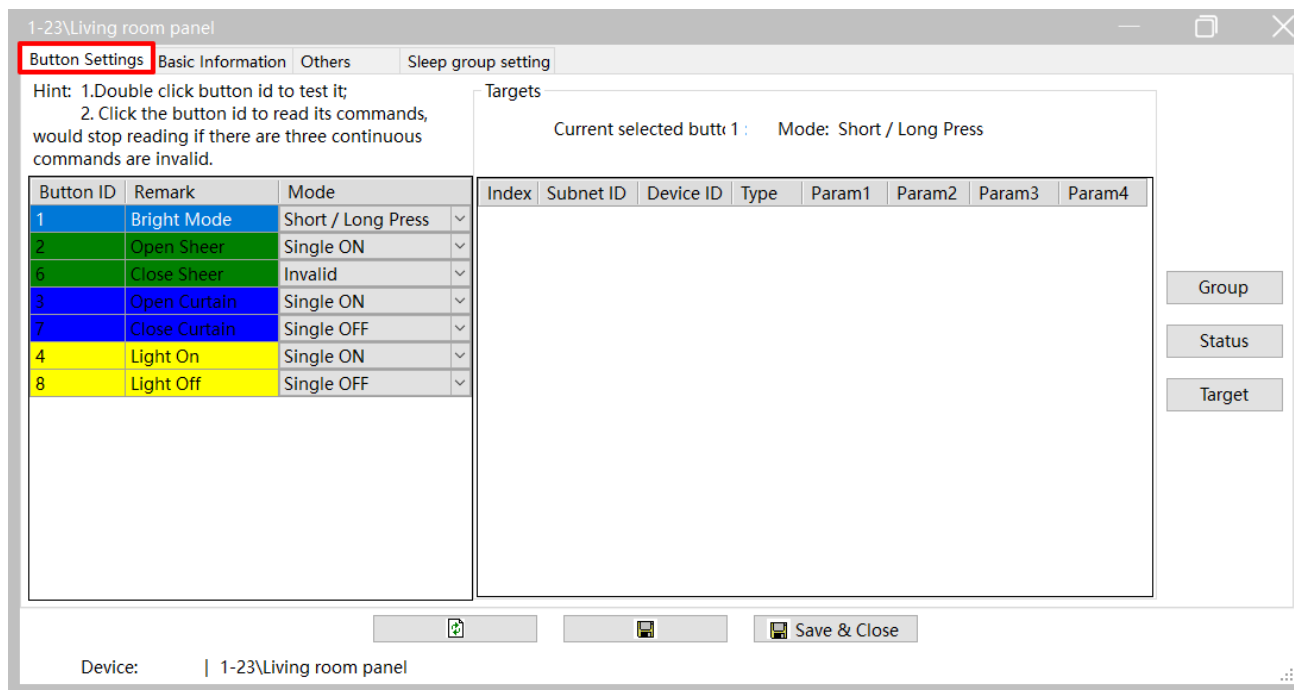


Figure 3-1 Button Setting Page

#### 3.1 Button Mode Setting

User may set button mode and button remarks on the left of Button Setting page.

#### 3.2 Button Group Setting

One button group includes two buttons, which can be divided or combined. The two buttons have the same function after combination.

Click “Group” Button to open Button Group window, as shown in Figure 3-2.

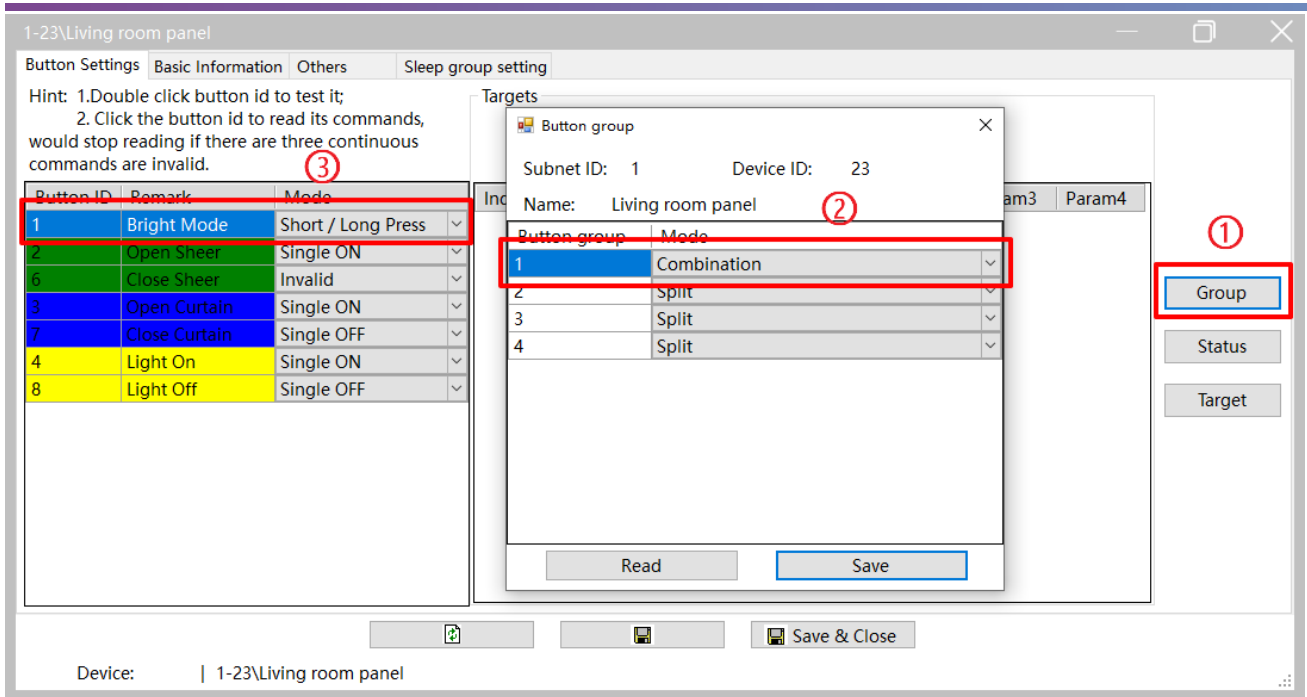


Figure 3-2 Button Group Setting

Take Group 1 (including Button 1 and 5) as an example. Set the mode to “Combination”, click “Save” to save and quit, thus Button 1 and 5 are combined into Group 1 (Button 5 is hidden, as shown in Mark ③ of Figure 3-2). Then Button 1 and 5 have the same function, which can be set in “Button Mode”.

### 3.3 Button Status Setting

Click “Status” Button to open Button Status window, as shown in Figure 3-3. This page includes the following setting options:

- ① Status indicator: to enable/disable the status indicator of this button.
- ② Dimming: to enable/disable the dimming function of this button.
- ③ Dimming value: if enabled, the panel may memorize the dimming status of the lights when the light is turned off, and recall the status after when turned on.
- ④ Mutual and Linkage: please keep default.

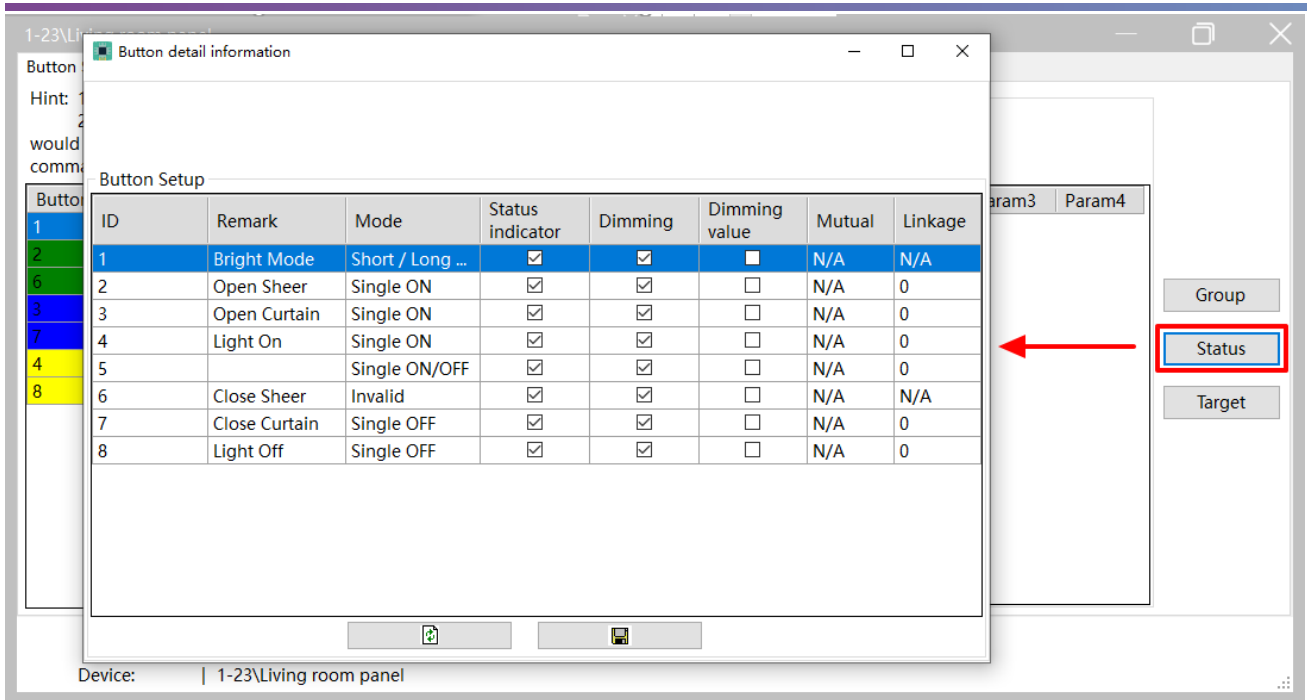


Figure 3-3 Button Status Setting

### 3.4 Target Setting

Select the button for target configuration on the left, and click “Target” button on the right to open “Target Configuration” window, as shown in Figure 3-4.

**Notice:**

The number of the target depends on the button mode, ONLY one target is supported except “Combination ON”, “Combination OFF”, “Combination ON/OFF”, “Double click/combined”, “Short/long press”, “Short press/long jog”.

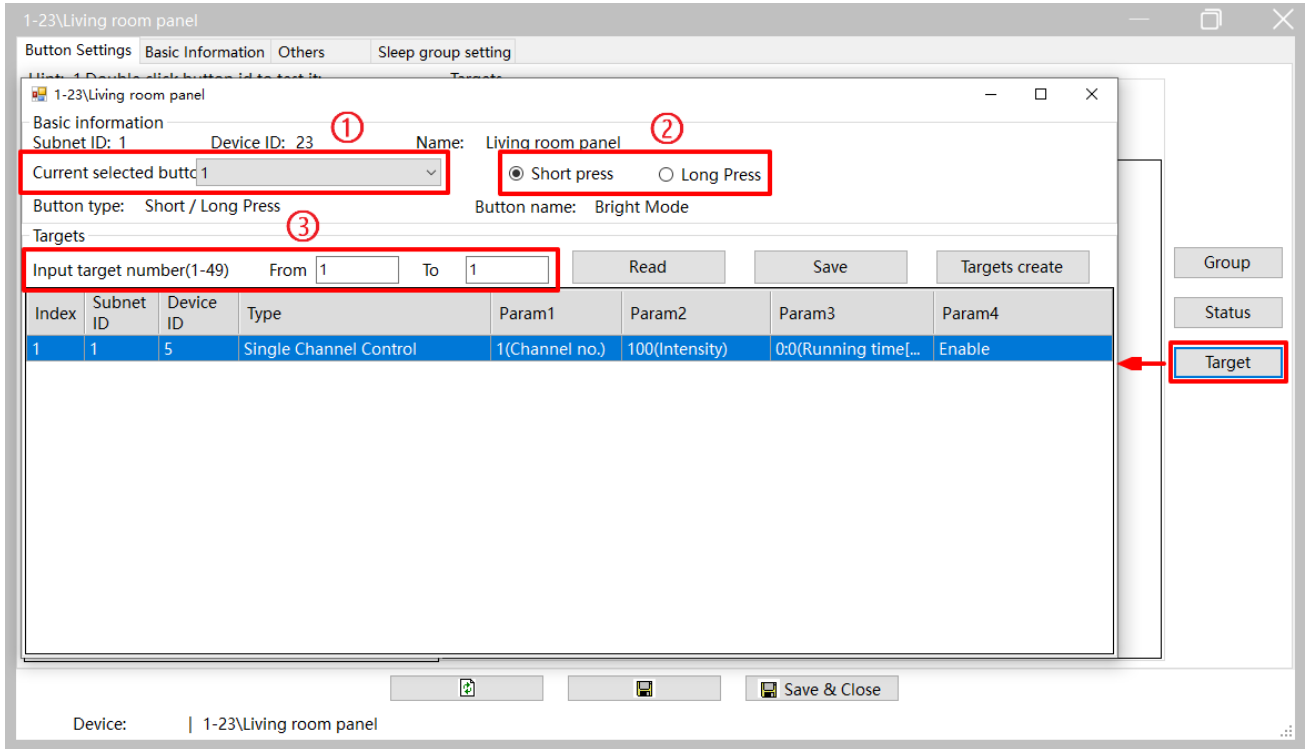


Figure 3-4 Button Target Configuration

### 3.4.1 Add Target

If the button supports two or more targets, then the user can add target. This part takes “adding two more targets to the long press mode of Button 1” as an example.

1. Set the mode of Button 1 to “Short/long press” on the left of button configuration page.
2. Select Button 1, and click “Target Configuration” to open target configuration window.
3. Select “Long Press” in button status type (Mark ② of Figure 3-4).
4. The total target number will be 3 if 2 more targets is to be added as there’s 1 target by default. Thus, enter “from 1 to 3” in “Input target number”, and click “Read” button.
5. Then there will be 3 targets in the target list below, click “Save”.

### 3.4.2 Edit Target

Add targets according to [Add Target](#), and then the targets can be configured.

(Continued from the preceding part)

Click the target in target list, and edit its Subnet ID, Device ID, Type, and other parameters (according to the selection of Type). Click “Save” to save changes.

Notice: About “Target Creation”

“Target Creation” provides a more convenient way to add target(s) to the button. Its function is similar to creating scenes and add it to the button in order for the button to control the targets.

The following ways can be followed to enter “Target Creation” (As shown in Figure 3-5):

- ① Click “Targets” → “Targets Templates” in the main page of Buspro Setup Tool 2.
- ② Click “Button Settings” → “Targets” → “Targets create”.

The following 4 areas are included in this page:

- ① Device list: includes the devices that has been searched in Buspro Setup Tool.
- ② Device button list: shows the buttons of the device, and device can be selected above.
- ③ Template list
- ④ Template target list: includes the targets of current template.

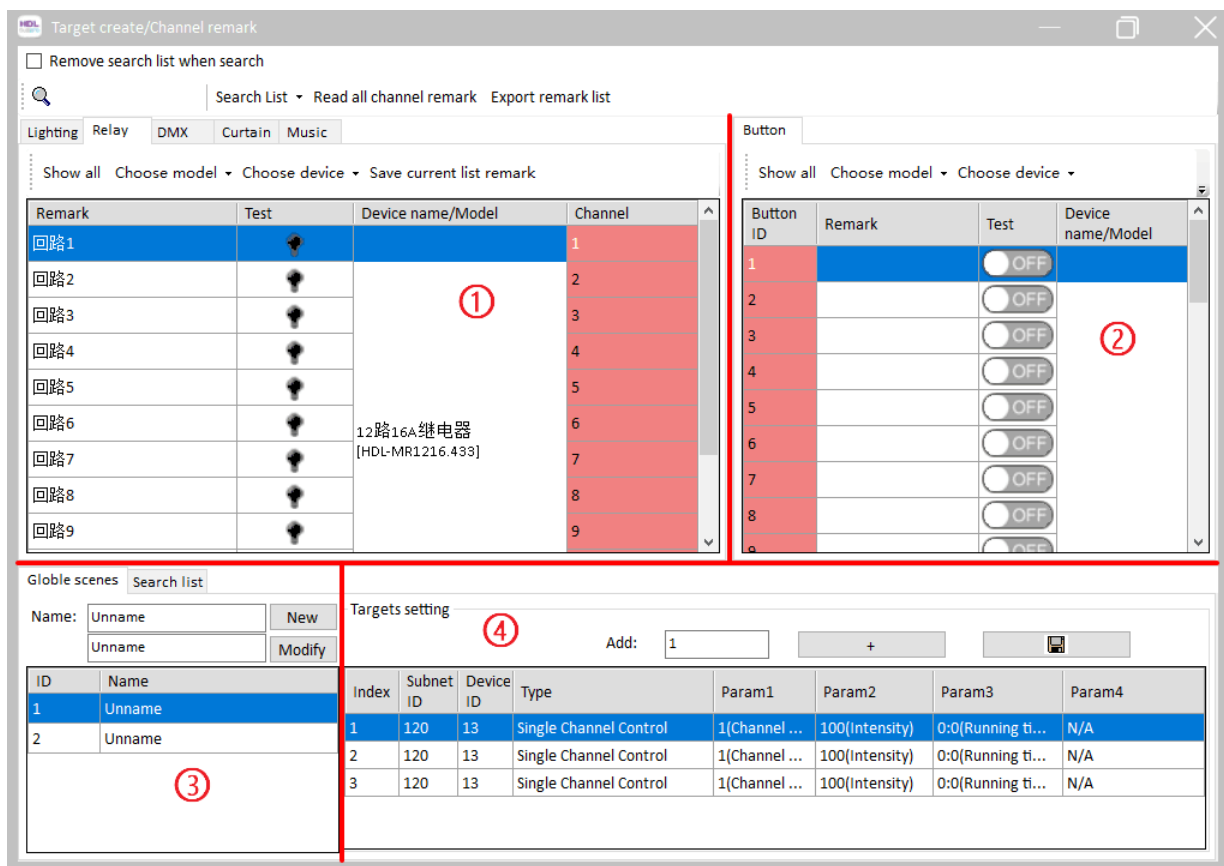


Figure 3-5 Target Creation

To edit template, select the template in ③ and edit in ④. “Template” is only for saving the targets temporarily in order for editing and is not assigned to any button.

User may add the target to the button in the following 2 ways:

- ① Drag the device in ① (red part) to corresponding button in ② (red part).
- ② Select the targets in ④ (multi-selection with Shift/Ctrl supported), right click and select “Copy selected row”. Return to Button Target Configuration Page (Figure 3-4) and right click on target list and select “Paste”, then click “Save”.

## 4 Color Setting

Click “Others” in configuration page, as shown in Figure 4-1. Color Setting includes the following setting options:

- ① Button Status Color Setting
- ② Local Color Library Setting
- ③ White Balance Adjustment

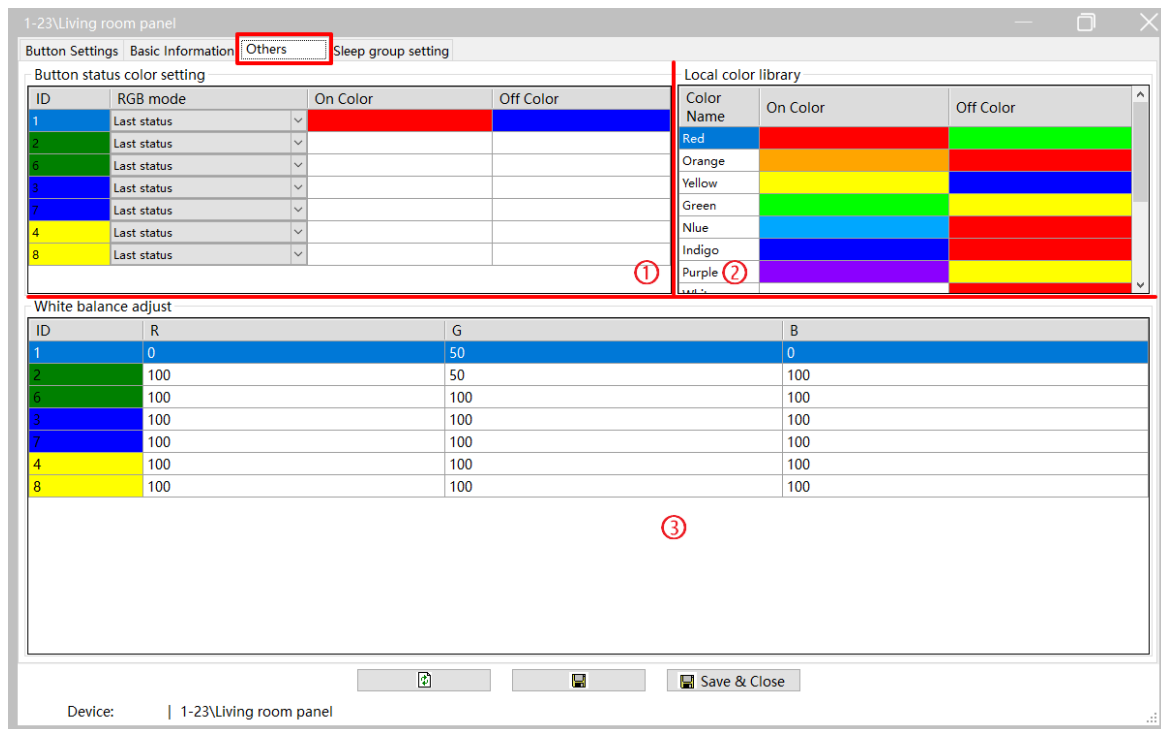


Figure 4-1 Color Setting

### 4.1 Button Status Color Setting

One button may be set with different colors according to its status. This area is divided into 3 groups: RGB mode, On color, Off color.

1. RGB Mode:
  - None: no backlight is set for this button, despite that the button can control targets.
  - Flicker once: the indicator flicker only once when pressed. If selected, the color is set to white and can not be changed.
  - Last status: Press the button, and the indicator will indicate the targets in different

status.

2. On color:

The indicator color when the target is on (only valid for “Last status” in RGB Mode)

3. Off color:

The indicator color when the target is off (only valid for “Last status” in RGB Mode)

### 4.2 Local Color Library Setting

Press Button 2 and 3 to set on color and off color. The system has 8 pairs of color by default, which can not be changed. User may select with Button 2 or 3. The changes will be saved in 20s after the last operation.

User may customize 5 pairs of color aside from the 8 default pairs. Select the color in corresponding groups, as shown in Figure 4-2.

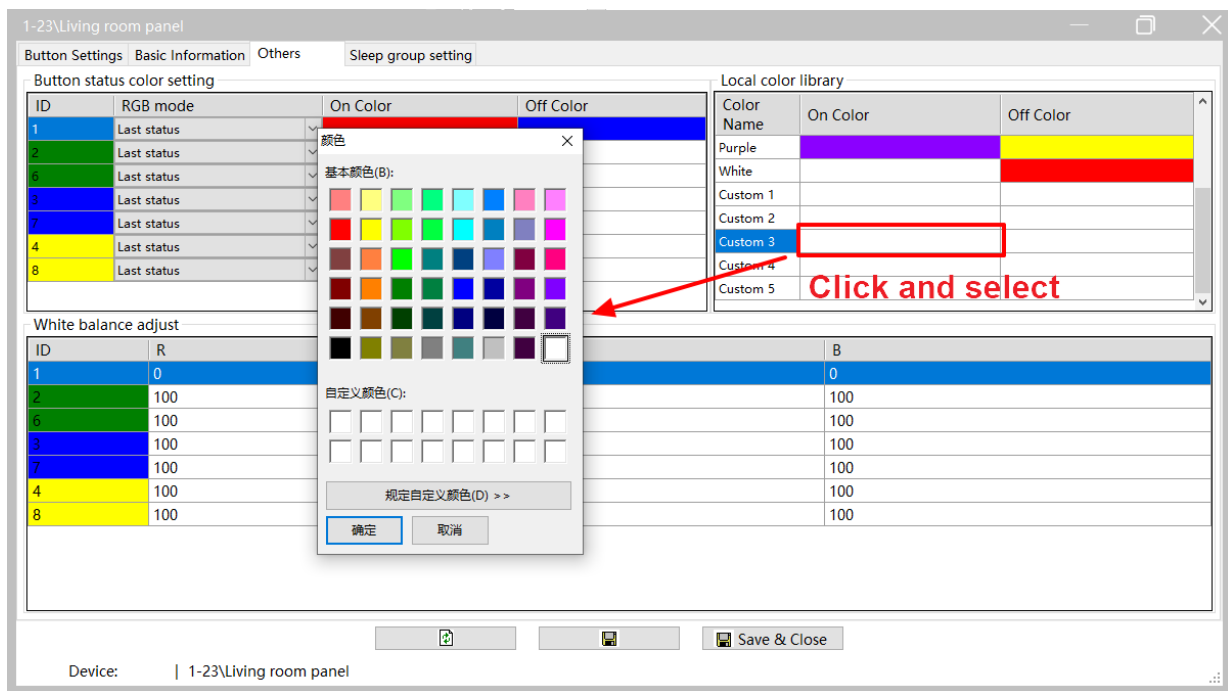


Figure 4-2 Edit Local Color Library

### 4.3 White Balance Adjustment

If the indicator color is not accurate, please set the button indicator color to white in “Button Status Color Setting”, and edit the RGB value (from 0 to 100) in “White Balance Adjustment” to adjust white color, in order for correct indicator color.



## 5 Sleep Group Setting

The panel has two status: Sleep and Standby

- Sleep: triggered by command, and the panel will enter sleep mode (similar to pressing the power button for the mobile phone to enter sleep mode)
- Standby: in a set period of time after last operation, the system enters standby mode automatically (similar to the mobile phone entering standby mode with no operation for a short period of time)

“Sleep Group” refers to the following situation: if one panel is waken up from sleep/standby mode, other panels in the same sleep group will be waken up as well. Through configuration, one panel can send command for all the panels in the same sleep group to enter sleep mode. Despite that the standby status of the panels in the same sleep group stay independent.

Click “Sleep Group Setting” in configuration page, as shown in Figure 5-1.

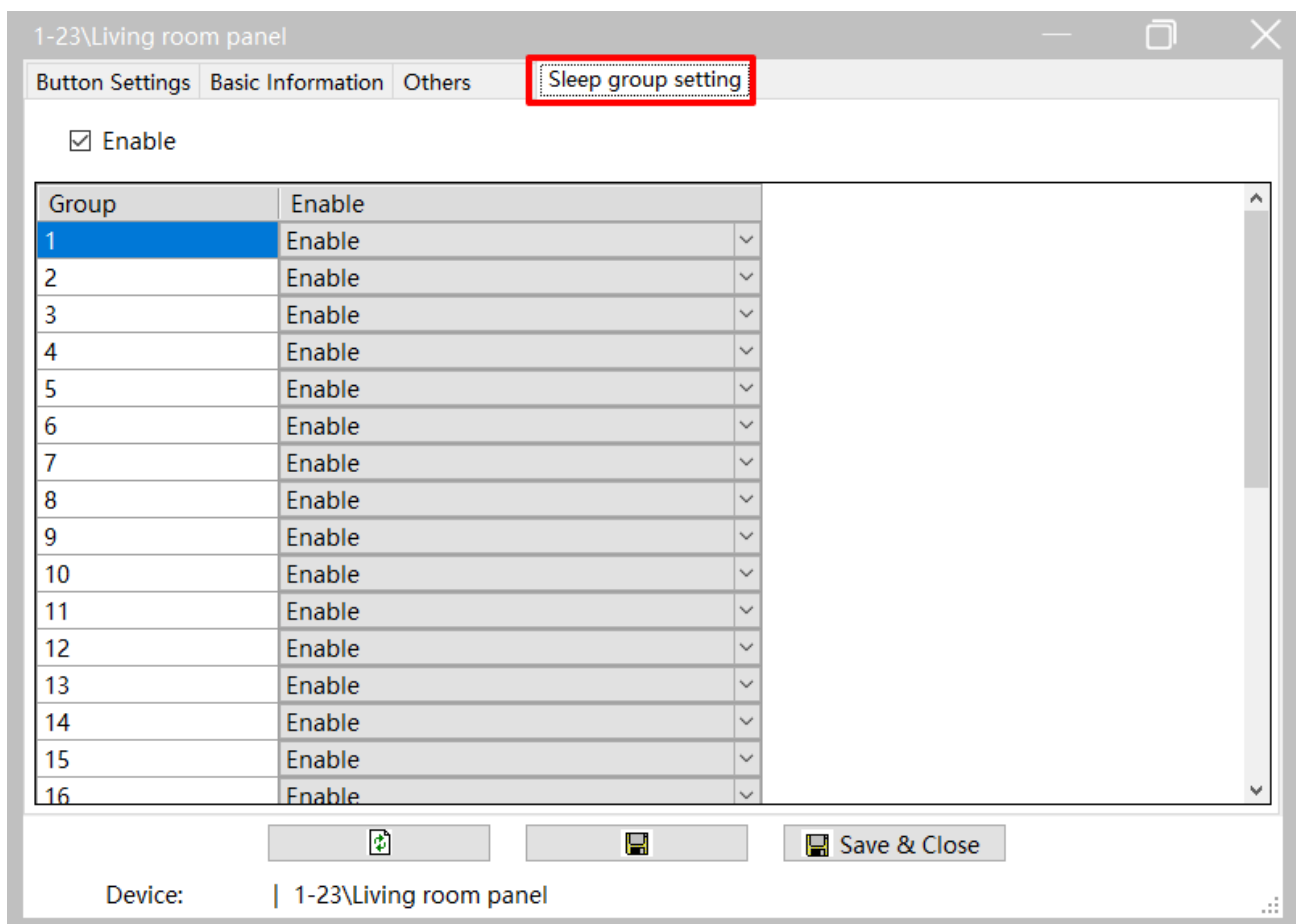


Figure 5-1 Sleep Group Configuration

Check “Enable” to enable the sleep group function of the panel, otherwise the panel stays independent in the system and its sleep status does not affect other panels.

Add the panel to the corresponding sleep group by selecting “Enable”. The system has 32 sleep groups by default. Select “Enable” to add the panel to the corresponding sleep group, and when the panel is waken up, other panels in the sleep group will also be waken up.