

Parameters

Electrical Parameters (from HDL-MPPI.48):

Power supply	DC12-30V
Buspro power consumption (from HDL-MPPI.48)	24mA/DC24V
Card type	MIFARE ONE S50 13.56Hz

Environmental Conditions:

Working temperature	-5°C~45°C
Working relative humidity	Up to 90%
Storage temperature	-20°C~+60°C
Storage relative humidity	Up to 93%

Approved

CE

RoHS

Product Information:

Dimensions	86×86×20.5 (mm)
Weight	107(g)
Housing material	Aluminum, ABS
Installation	EU wall box
Protection degree	IP20

Important Notes

- It must be used in conjunction with HDL-MPPI.48 device (be installed in wall-box).
- Buspro cable — HDL Bus/KNX cable, 0.8mm single-core copper cable.
- Buspro connection — Series connection (hand-in-hand).
- Installation — EU wall box.
- Third party card: when use the third party RF card, make sure to open the password of data area.

Installation Step

- Connect bus cables. Make sure the color of wire complies with the definition.
- Make sure the Buspro cable type is correct and has no short circuit.
- Mount the HDL-MPPI.48 in the wall-box.
- Put this device into HDL-MPPI.48.

Overview



HDL-MHIC.48 is the master card panel for energy control of hotel guest room and it has built-in Mirare FR card reader. Guest card, service card, cleaner card, maintenance staff card, manager card, etc can be recognized by the master card

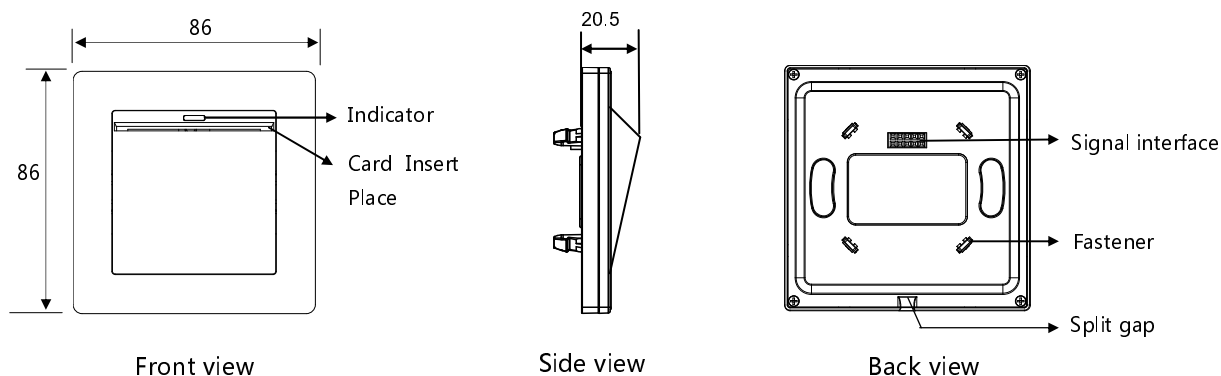
Functions

- Master card for energy & power management.
- ID recognition, enables different scenes for different types of cards.
- Type of card: Guest card, service card, cleaner card, maintenance staff card, manager card, etc.
- Control of mechanical switch can be configured when insert the card or take off the card, maximum 49 targets can be controlled by the switch. Maximum 99 targets can be controlled under other key mode.
- Online upgrading from Buspro is available.

HDL Buspro Definition for Cable

HDL Buspro	HDL-Buspro/KNX
DC24V	Red
COM	Black
DATA-	White
DATA+	Yellow

Dimensions and Wiring



Notes:

Card: The new cards have to be assigned by the hotel guest room management software. There are totally 5 types of cards: Guest card, service card, cleaner card, maintenance staff card, manager card. When you use different cards, you can control different targets.

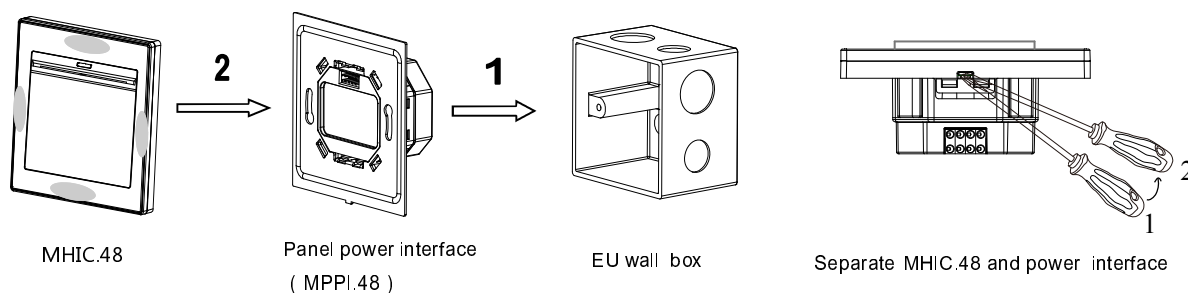
Indicator: After power on, it turns to red. It turns to green after insert the card.

Master Card panel: The info of the panel should match the info of the card.

Signal interface and fastener: Connect to panel power interface (MPPI.48).

Split gap: Insert the slotted screwdriver to the split gap, separate the panel and power module (MPPI.48).

Installation



Installation: Hold the edge of MHIC.48 (shown as above), insert the power interface module vertically. Do not push this module too hard.

Split: Insert a 2.5mm screwdriver to the split gap, pry up from position 1 to 2, wiring hole will open. Then separate the MHIC.48 and MPPI.48.

Safety precaution



- The screw down strength should not exceed 0.2Nm.
- Do not make wrong connection on Bus interface, it will damage the Bus interface of this module.
- Never let liquids get into this module, it will damage this device.
- Do not get AC power into Bus wire, it will damage all devices in the system.

Packing List

- | | |
|-----------------|----|
| ■ Datasheet | ×1 |
| ■ HDL - MHIC.48 | ×1 |

