

## Parameters

### Electrical Parameters (from HDL-MPPI.48):

BUS power supply	12-30VDC
BUS power consumption (from HDL-MPPI.48)	30mA/DC24V

### Environmental Conditions:

Working temperature	-5°C~45°C
Working relative humidity	Up to 90%
Storage temperature	-20°C~+60°C
Storage relative humidity	Up to 93%

### Approved

CE

RoHS

### Product Information:

LCD resolution	160x80
Dimensions	86×86×10.5 (mm)
Weight	141.5(g)
Housing material	Glass/Aluminum, ABS, PC
Installation	EU wall box
Protection degree	IP20

## Important Notes

- It must work in conjunction with HDL-MPPI.48 device (be installed in wall-box).
- Buspro cable — HDL Bus/KNX cable, 0.8mm single-core copper cable.
- Buspro Connection — Series connection (hand-in-hand).
- Installation — 86×86mm EU wall box.

## Installation Step

- Connect Buspro cables. Make sure the color of wire complies with the definition.
- Make sure the Buspro cable type is correct and has no short circuit.
- Mount the HDL-MPPI.48 in the wall-box.
- Put this device into HDL-MPPI.48.

## HDL Buspro Definition for Cable

CAT5/CAT5E	HDL Buspro	HDLBuspro/KNX
Brown/ Orange	DC24V	Red
Brown white/ Orange white	COM	Black
Blue white/Green white	DATA-	White
Blue/ Green	DATA+	Yellow

## Overview

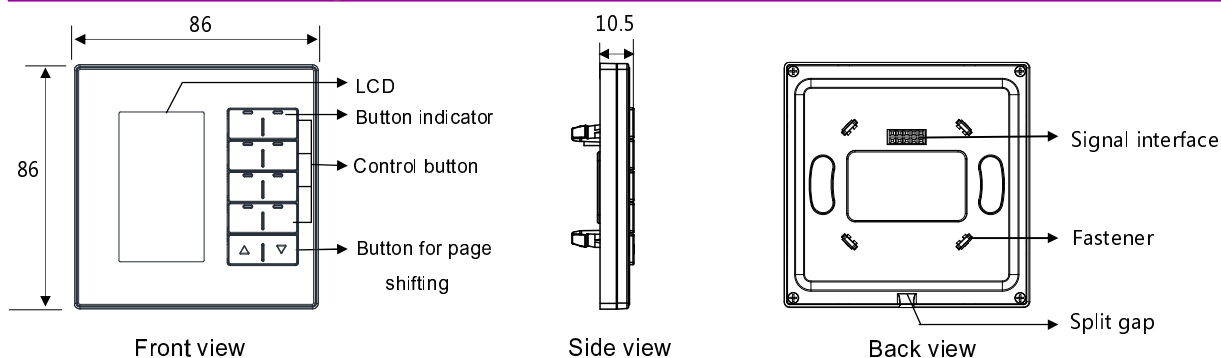


**HDL-MPL8.48** 8-button multifunction LCD switch is a new generation of wall-mounted switch with new design. It has 8 control buttons and the left & right side of the button can be programmed separately. 2 buttons are used for the page switching. Each button can be displayed with an icon in the LCD screen, witch is customized for final user.

## Functions

- Adjustable LCD Backlit and LED indicator.
- Specified page for Floor Heating, HVAC, Music.
- Icon for Key Buttons can be customized by users.
- Button combination and Double Button combination function available.
- Button mutual exclusion available.
- Upgrading online from HDL Buspro is available.
- Multi Key Mode: Invalid, Single on-off, single on, single off, Combination on-off, combination on, combination off, double click/single on-off, double click/combination on-off, momentary, clock, short/long press, short press/long momentary press, hyperlink.
- Multi Key control Mode: Scene, Sequence, timer switch, universal switch, single channel on-off, broadcast scene, broadcast channel, curtain, GPRS Control, Panel Control, alarm control, music play, General control.
- Functions including the following: Lock, Turn on/off AC, Cooling & heating for AC, Auto temperature setting, Fan Speed regulating, AC Mode setting, AC Temperature regulating, backlight adjusting, AC Lock, Backlight and status indicator light setting, floor heating temperature and mode setting etc.
- Communication : HDL Buspro.

## Dimensions and Wiring



**LCD:** Display icon, user can design icon from manage software.

**Button Indicator:** Indicates the status of the controlled target. On-Status on, Off-Status off. User can define the color of status.

**Control Button:** To control target.

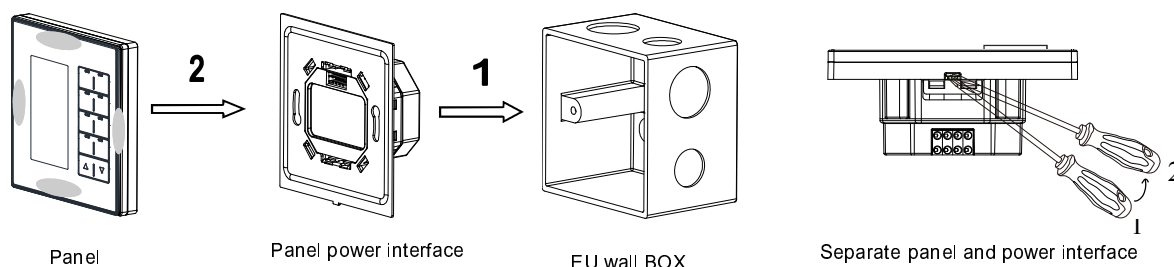
**Button for page shifting:** For user to select different pages.

**Signal interface and fastener:** Connect to panel power interface (MPPI.48).

**Split gap:** Insert a slotted screwdriver to the split gap, separate the panel and power module (MPPI.48).

**Read and modify the address:** Keep pressing the first row (button 1 or button 2) and the forth row (button 7 or button 8) to enter into the panel setting page. Choose the "SYSTEM", keep pressing the button 1 or button 2, you can modify the subnet ID and device ID. Other functions in this item are straightforward to set

## Installation



**Installation:** Hold the edge of the panel (shown as above), insert the power interface module vertically. Do not push the panel too hard.

**Split:** Insert a 2.5mm-screwdriver to the split gap, pry up from position 1 to 2, wiring hole will open. Then separate the panel and MPPI.48.

## Safety attention



- The screw down torque should not exceed 0.1Nm
- Mounting position: indoor.
- Do not make wrong connection on Buspro interface, it will damage the Buspro interface of this module.
- Never let liquids get into the module, it will damage this device.
- Do not get AC power into Bus wire, it will damage all devices in the system.

## Package contents

- Panel \*1 / Datasheet \*1

