

Parameters

Electrical Parameters (from HDL-MPPI.48):

Power Supply	DC12-30V
Power consumption	30mA/DC24V(MPL8.48)
(from HDL-MPPI.48)	20mA/DC24V(MP8B.48)

Environmental Conditions:

Working Temperature	0°C~45°C
Working relative Humidity	Up to 90%
Storage Temperature	-20°C~+60°C
Storage relative Humidity	Up to 93%

Approved

CE

RoHS

Product Information:

LCD Resolution	240x80(MPL8.48)
Dimensions	172.5x86x10.5 (mm)
Weight	
Housing material	Glass/Aluminum , ABS, PC
Installation	EU wall box
Protection	IP20

Important Notes

- It must work in conjunction with HDL-MPPI.48 device (be installed in wall-box).
- Buspro cable—HDL Bus/KNX cable, 0.8mm single-core copper cable.
- Buspro Connection—Series connection (hand-in-hand).
- Installation—EU wall box.

HDL Buspro Definition for Cable

CAT5/CAT5E	HDL Buspro	HDLBuspro/KNX
Brown/ Orange	DC24V	Red
Brown white/ Orange white	COM	Black
Blue white/Green white	DATA-	White
Blue/ Green	DATA+	Yellow

Safety precaution



- The screw down strength should not exceed 0.1Nm
- Mounting position: indoor
- Do not make wrong connection on Buspro interface, it will damage the Buspro interface of this module
- Never let liquids get into the module, it will damage this device
- Do not get AC power into Bus wire, it will damage all devices in the system

Overview



HDL-MPL8.48 8-button multifunction LCD switch is a new generation of wall-mounted switch with new design. It has 8 control buttons and the left & right side of the button can be programmed separately. There are 2 buttons are used for the page switching. Each button can display an icon in the LCD screen and the icon can be customized for final user.

HDL-MP8B.48 8-button multifunction panel. Plate material and color are easy to replace.

Functions

(MPL8.48)

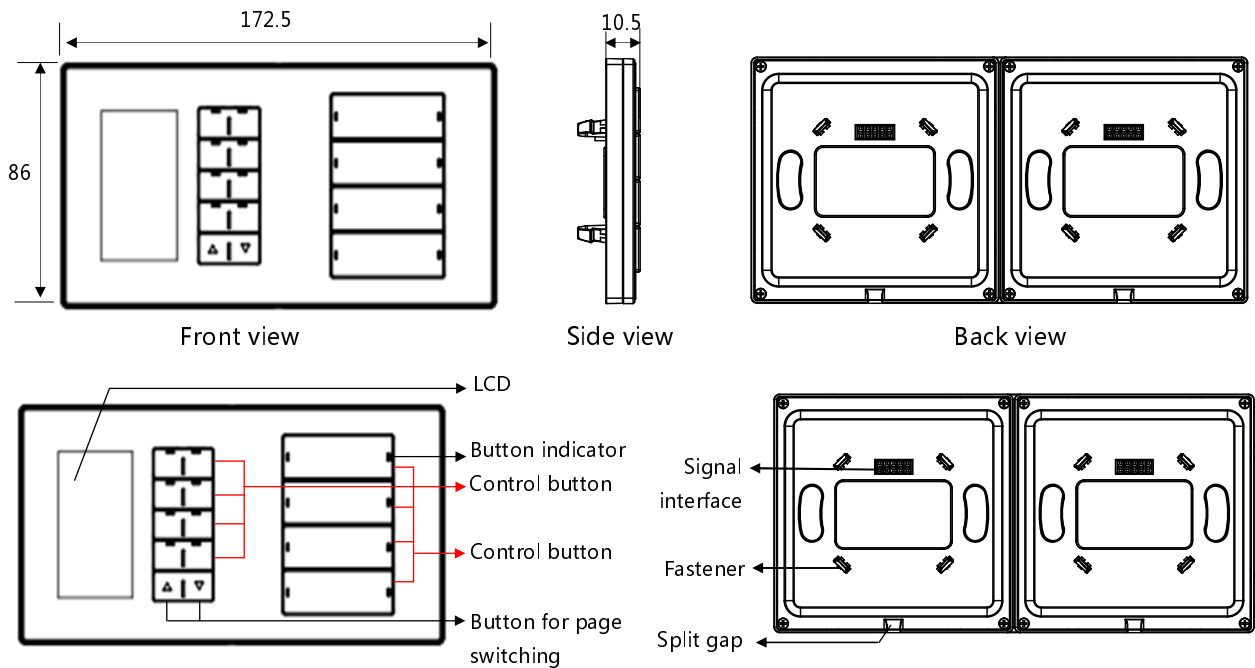
- Specified page for Floor Heating, HVAC, Music .
- Icon for Key Buttons can be customized by user.
- Button combination and Double Button combination function available.
- Button mutual exclusion available.
- Functions including the following: option IR Receiver, Lock, Turn on/off AC, Cooling & heating for AC, Auto temperature setting, Fan Speed regulating, AC Mode setting, AC Temperature regulating, backlight adjusting, AC Lock, Backlight and status indicator light setting, floor heating temperature and mode setting, etc.

(MPL8.48 & MP8B.48)

- Multi Key Mode: Invalid, Single on-off, single on, single off, Combination on-off, combination on, combination off, double click/single on-off, double click/combination on-off, momentary, clock, short/long press, short press/long momentary press, hyperlink.
- Multi Key control Mode: Scene, Sequence, timer switch, universal switch, single channel on-off, broadcast scene, broadcast channel, curtain, GPRS Control, Panel Control, alarm control, music play, General control.
- Adjustable LCD Backlight and LED Indicator.
- Upgrading online from HDL BUS is available.
- Communication : HDL Buspro.



Dimensions and Wiring



LCD: Display icon, user can design icon from management software.

Button Indicator: Indicates the status of the controlled target. On–Status on; Off–Status off. User can define the color of status.

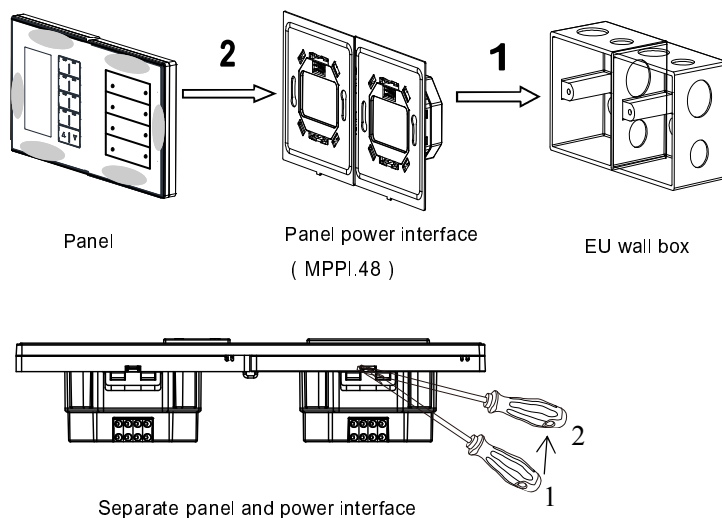
Control Button: To control targets.

Button for page shifting: For user to select different pages.

Signal interface and fastener: Connect to panel power interface (MPPI.48).

Split gap: Insert a slotted screwdriver to the split gap, separate the panel and power module (MPPI.48).

Installation



Installation: Hold the edge of panel, (see pictures on the left), insert the power interface module vertically. Do not push the panel too hard.

Split: Insert a 2.5mm-screwdriver to the split gap, pry up from position 1 to 2, wiring hole will open. Then separate the panel and MPPI.48.