

Parameters

Electrical Parameters (from HDL-MPPI.46):

Power Supply	DC12-30V
Power consumption (from HDL-MPPI.46)	20mA/DC24V

Environmental Conditions:

Working Temperature	-5°C~45°C
Working relative Humidity	Up to 90%
Storage Temperature	-20°C~+60°C
Storage relative Humidity	Up to 93%

Approved

CE
RoHS

Product Information:

Dimensions	86×116.5×10.5 (mm)
Weight	MPT2.46:137.5(g); MPT4.46: 143(g) MPT6.46:
Housing material	Glass
Installation	US wall box
Protection	IP20

Important Notes

- It must work in conjunction with HDL-MPPI.46.
- Real product may be different from pictures on the right.**
- Touch performance – touch panel sensitivity need to be readjusted after installation.
- IR receiver function – only available for customized touch panel with IR receiving hole.
- The cover can be replaced by the user .
- Buspro cable - HDL Buspro/KNX cable, 0.8mm single-core copper cable.
- BusproConnection - Series connection (hand-in-hand).
- Installation - US wall box.

Installation Step

- Connect bus cables. Make sure the color of wire complies with the definition
- Make sure the Buspro cable type is correct and has no short circuit
- Mount the HDL-MPPI.46 in the wall-box
- Put this device into HDL-MPPI.46

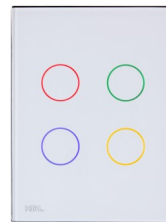
HDL Buspro Definition for Cable

CAT5/CAT5E	HDL Buspro	HDLBuspro/KNX
Brown/ Orange	DC24V	Red
Brown white/ Orange white	COM	Black
Blue white/Green white	DATA-	White
Blue/ Green	DATA+	Yellow

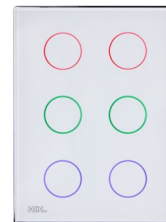
Overview



HDL-MPT2.46



HDL-MPT4.46



HDL-MPT6.46

Multi-function control panel, embedded with RGB LED backlight for each touch button, any color is available for the button via setting in HDL Buspro configuration tools software.

Functions

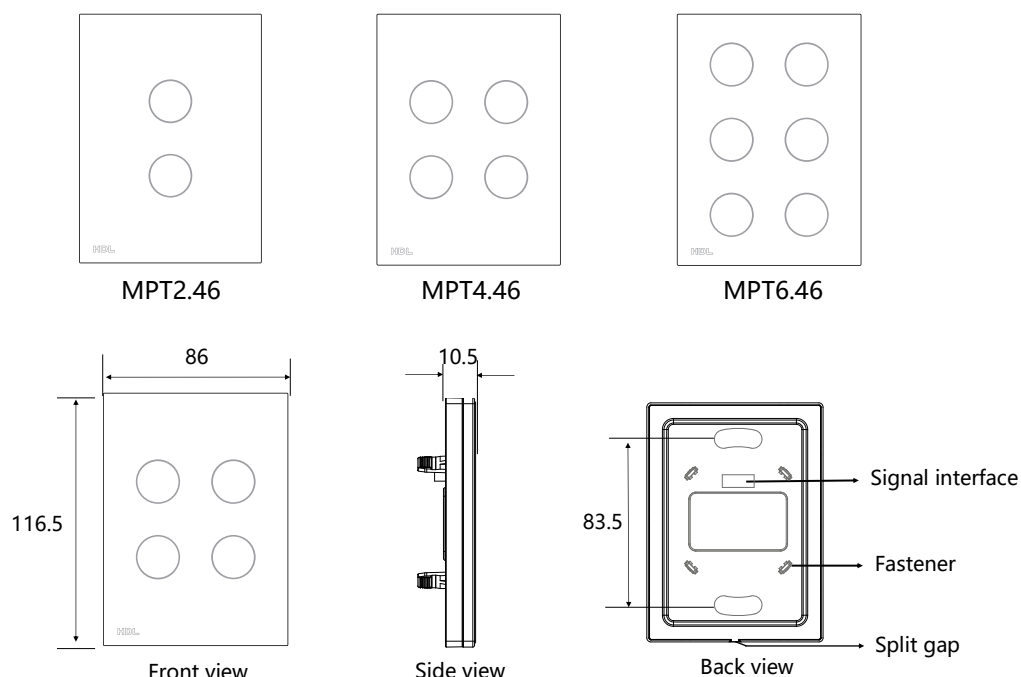
- Key Mode: Single on/off, Single on, Single off, Combination on, Combination off, Combination on/off, Short/long press, Short press/long press..
- Key Control Type: Scene, Sequence, Timer, Universal Switch, Single Channel Control, Broadcast Scene, Broadcast Channel, Curtain Control, GPRS Control, Panel Control, Security Module, Music Play, Universal Control, etc.
- Built-in IR receiver, need to replace a plate with an IR receiving hole to enable the IR remote control function.
- IR remote control function.
- Adjustable backlight color and intensity .
- Support HDLBuspro online upgrading .
- Customized image for touch panel.

Safety attention



- The screw down strength should not exceed 0.1Nm
- Mounting position: indoor
- Do not make wrong connection on Buspro interface, it will damage the Buspro interface of this module
- Never let liquids get into the module, it will damage this device
- Do not get AC power into Bus wire , it will damage all devices in the system
- Ensure good ventilation
- Avoid contact with liquids and aggressive gases

Dimensions and Wiring



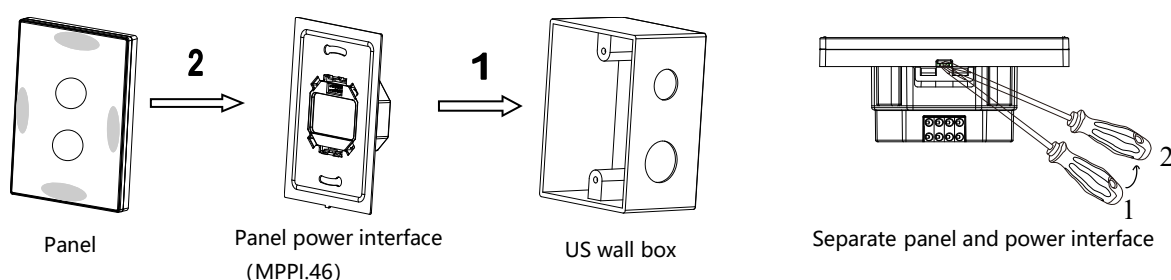
Touch button function: On/off, dimming.

Address modification: Press any of button for 15s, all the backlights will flash, the address of this device can be changed on HDL Buspro software: submenu "address management→address modify".

Signal interface and fastener: Connect to panel power interface (MPPI.46).

Split gap: Insert a slotted screwdriver to the split gap, separate the panel and power module (MPPI.46).

Installation



Installation: Hold the edge of panel (shown as above), insert the power interface module vertically. Do not push the panel too hard.

Split: Insert a 2.5mm-screwdriver to the split gap, pry up from position 1 to 2, and then the wiring hole will open. Then separate the panel and MPPI.46.

Glass plate replacement: Insert a small size straight screwdriver into the gap of the left side or right side of glass cover (shown as above), to pick up the glass cover, then put the new cover in right place, then press the grey area to lock the cover

Packing List

■ Datasheet*1 / Panel *1