



# Prism Lite Series Touch Panel User Manual

(Applicable for HDL-MPTF02.48/46,

HDL-MPTF04.48/46, HDL-MPTF06.48/46)

Version: 1.0.0

Published on Nov. 06, 2019

## Content

<b>Legal Statement</b> .....	I
<b>Update History</b> .....	II
1 Introduction .....	1
2 Basic Setting .....	3
3 Button Setting .....	5
3.1 Button Mode Setting .....	5
3.2 Button Status Setting .....	5
3.3 Target Setting .....	6
4 Button Status Color Setting .....	9
4.1 Button Status Color Setting .....	10
4.2 White Balance Adjustment .....	10
5 Sleep Group Setting .....	11

## Legal Statement

HDL has all the intellectual property rights to this document and contents thereof. Reproduction or distribution for third parties are prohibited without written authorization from HDL. Any infringement of HDL's intellectual property rights will be investigated the legal liability.

The contents of this document will be updated as the updates of product versions or other reasons. Unless otherwise agreed upon, this document is to be used as a guidance only. All the statements, information and recommendations in this document makes no warranty expressed or implied.

HDL Automation Co., Ltd.

## Update History

The form below contains the information of every update. The latest version contains all the updates of all former versions.

No.	Version	Update Information	Date
1	V1.0.0	Initial release	Nov. 06, 2019

## 1 Introduction

Prism Lite Series Touch Panel (hereinafter referred to as Prism Panel) is specially designed for home automation to control smart devices, and EU standard and US standard are available.

This user manual takes US standard 6-button panel as an example to introduce the configuration process of Prism Panel in Buspro Setup Tool 2. The devices include:

- Prism Lite Series Touch Panel
- A computer with Buspro Setup Tool 2
- 1-Port Programming Gateway (HDL-MBUS01IP.431) connected to the router
- Dedicated Buspro cable(s)

### Notice:

- ① Please refer to the datasheet attached to the product for the information of installation, wiring, specifications, etc.
- ② The pictures in this user manual are for reference only. The actual product should prevail.
- ③ The Button ID in this user manual is shown as Figure 1-1.

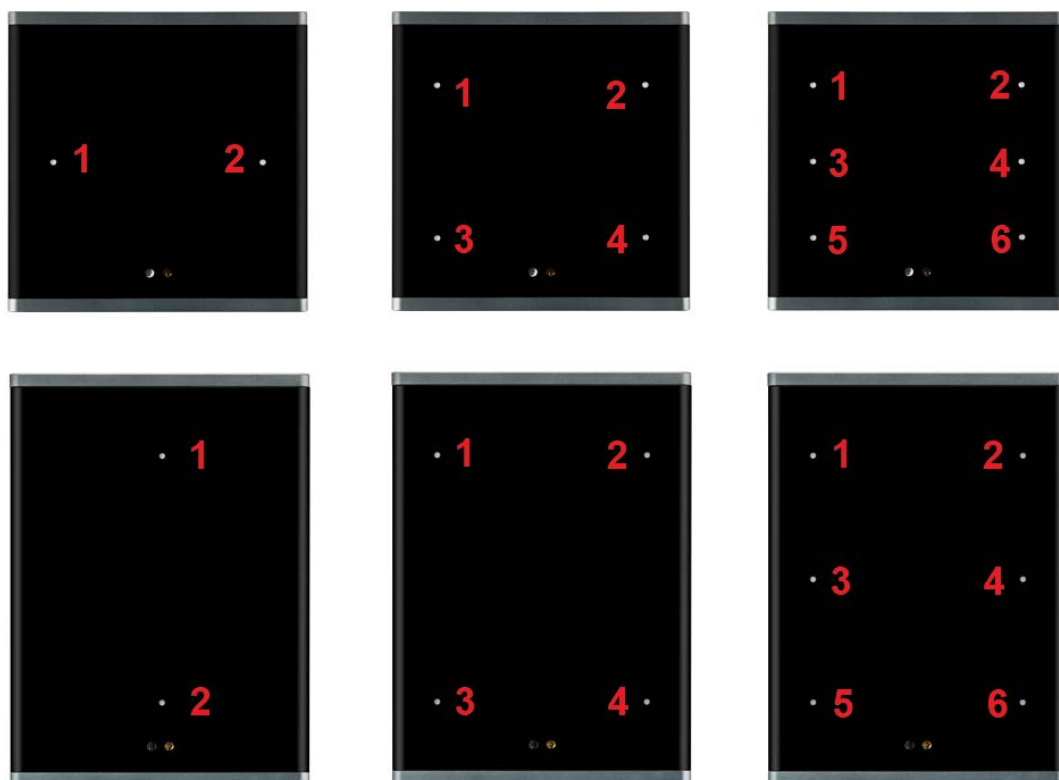
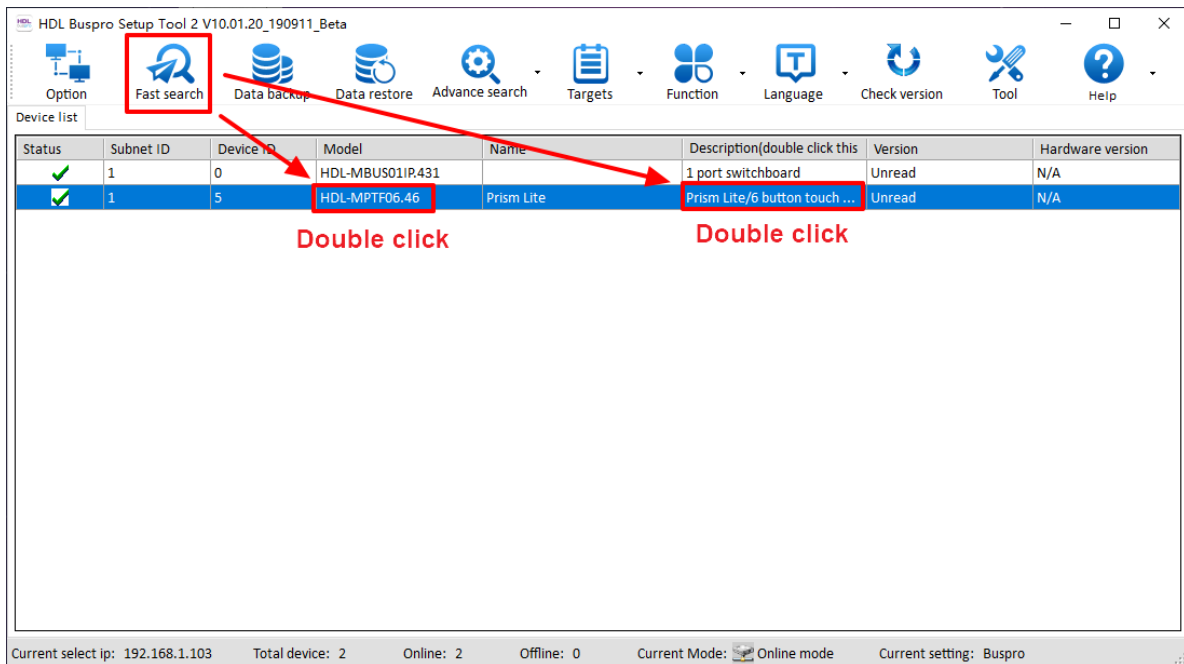


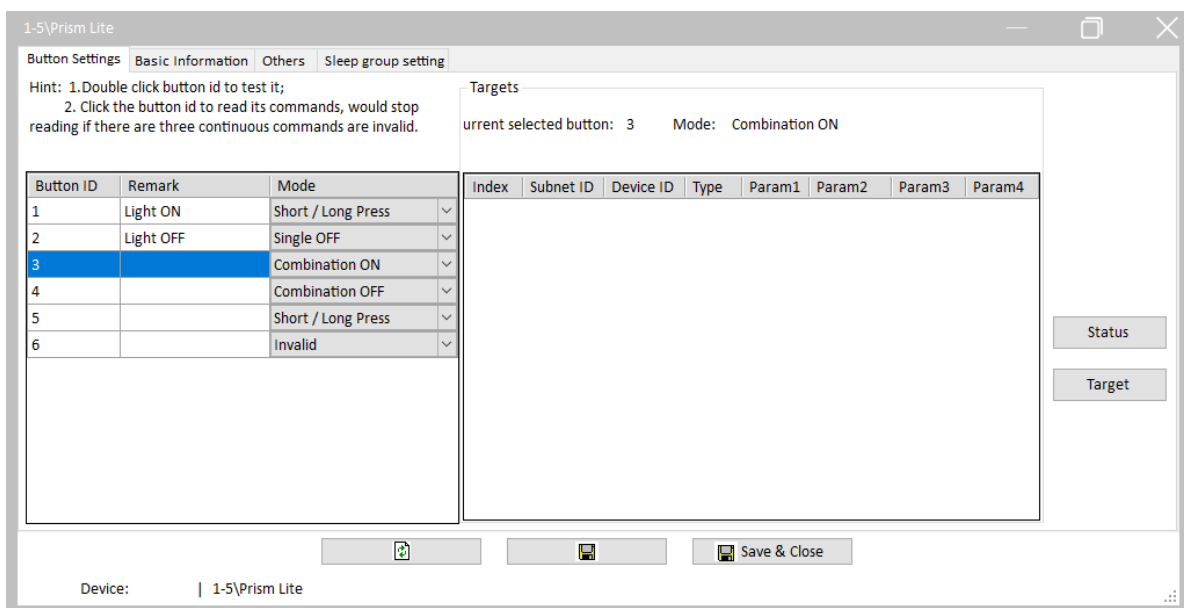
Figure 1-1 Button ID (Top: EU, Bottom: US)

### ➤ How to Enter Configuration Page?

1. Connect the panel to the system, and open Buspro Setup Tool 2 in the computer.
2. Click “Fast Search”.
3. Double click the “Model” or “Description” column to enter configuration page, as shown in Figure 1-2, Figure 1-3.



**Figure 1-2 How to enter configuration page**

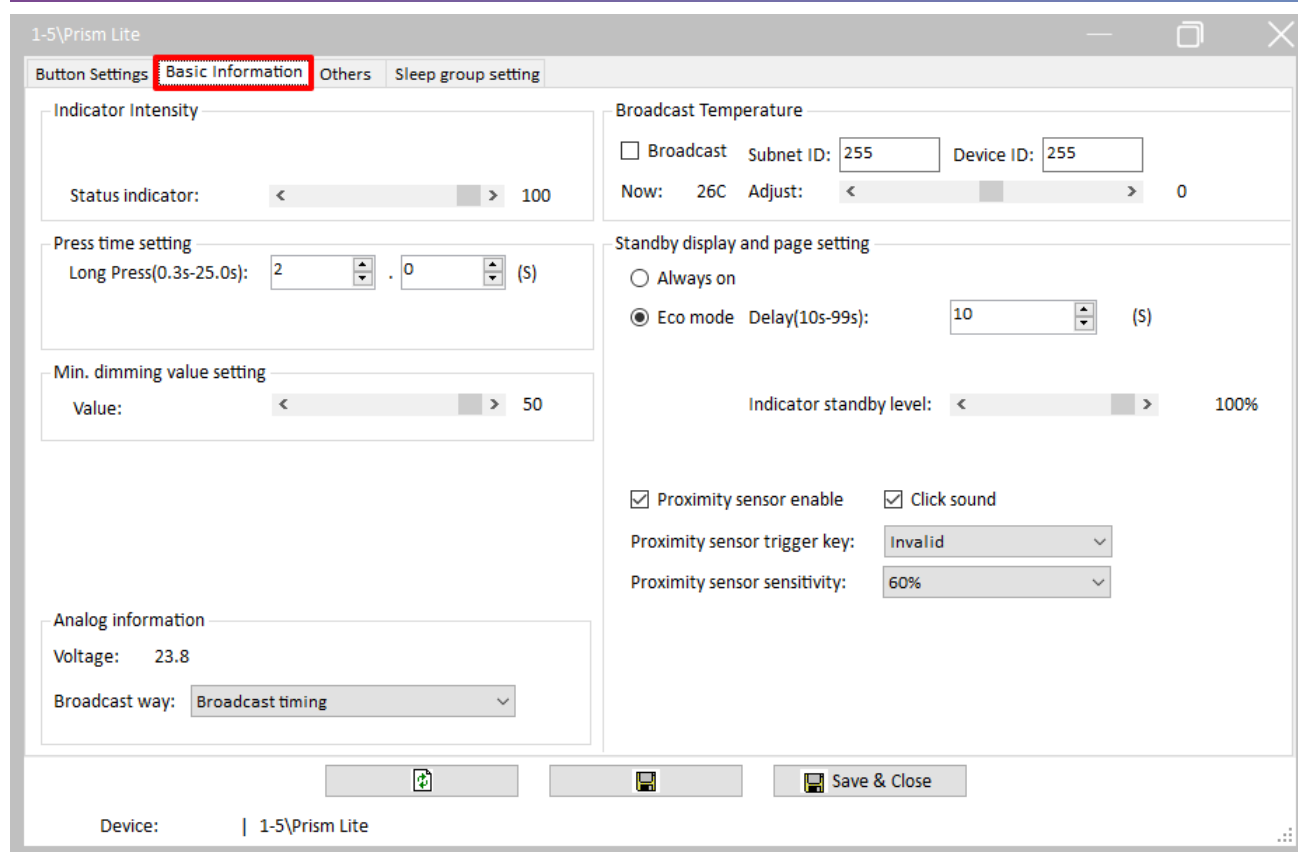


**Figure 1-3 Configuration page**

## 2 Basic Setting

Click “Basic Information” in configuration page, as shown in Figure 2-1. This page includes the following setting options:

- ① Indicator Intensity: includes status indicator (button indicator) brightness adjustment.
- ② Press time setting: includes the time setting of long press.
  - Long Press: Keep pressing the button longer than the time period, and the system will identify as “Long Press”. The range is from 0.3s to 25s.
- ③ Min. dimming value setting: means the minimum dimming value. The light brightness will not fall under this value during dimming operation.
- ④ Analog information setting: to enable/disable timing analog broadcast, or read panel voltage.
- ⑤ Broadcast temperature: Built-in temperature probe in Tile Panel enables temperature detection. The temperature data can be broadcast to corresponding device if the Subnet ID and Device ID is set. The temperature data can be adjusted with the slider.
- ⑥ Standby display and page setting:
  - Always ON: enable keeping the panel on
  - Eco mode: to enable the panel to enter eco mode automatically. If enabled, the delay time and indicator standby brightness can be set behind.
  - Proximity sensor enable: to enable the proximity sensor of Prism Panel
  - Click sound: to enable button sound
  - Proximity sensor trigger key: to trigger target when the panel senses human body.
  - Proximity sensor sensitivity: to set the sensitivity of proximity sensor, and higher value means the sensor is more sensitive.

**Figure 2-1 Basic information setting**



### 3 Button Setting

“Button Setting” page will be opened by default in configuration page, as shown in Figure 3-1.

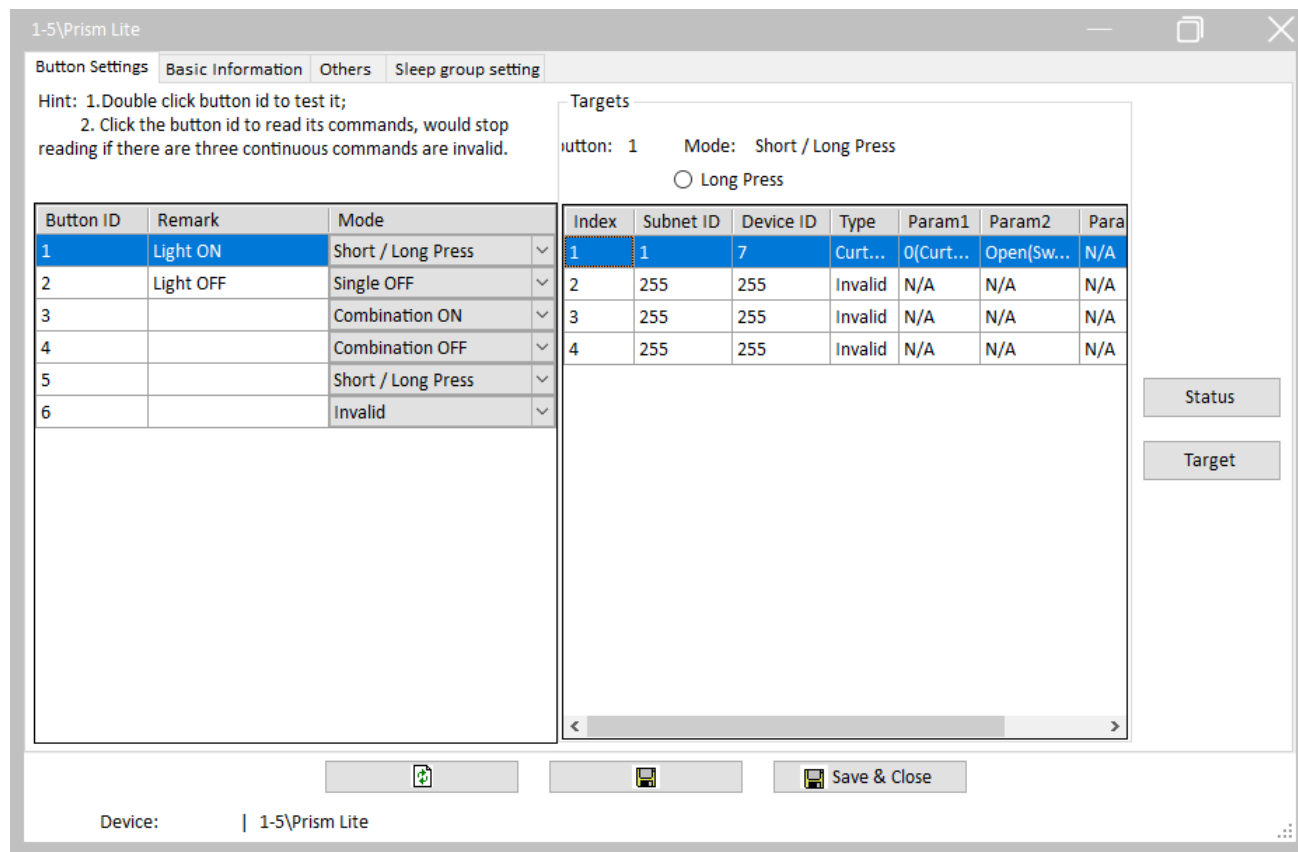


Figure 3-1 Button setting

#### 3.1 Button Mode Setting

User may set button mode and button button remarks on the left of Button Setting page.

#### 3.2 Button Status Setting

Click “Button Status” button to open Button Status window, as shown in Figure 3-2. This page includes the following setting options:

- ① Status indicator: to enable/disable the status indicator of this button.
- ② Dimming: to enable/disable the dimming function of this button.
- ③ Dimming value: if enabled, the panel may memorize the dimming status of the lights when

the light is turned off, and recall the status when turned on next time.

- ④ Mutual: only available when “Combination ON”, “Combination OFF” or “Combination ON/OFF” is selected. The ON/OFF status of the selected buttons are mutually exclusive. (Only one group of exclusive relationships is available in Prism Panel.)
- ⑤ Linkage: only available when “Single ON”, “Single OFF” or “Single ON/OFF” is selected. Enter the button ID to link 2 buttons together for controlling one same target. The target of the button with the smaller ID should prevail, while 0 means no button is linked to this button.

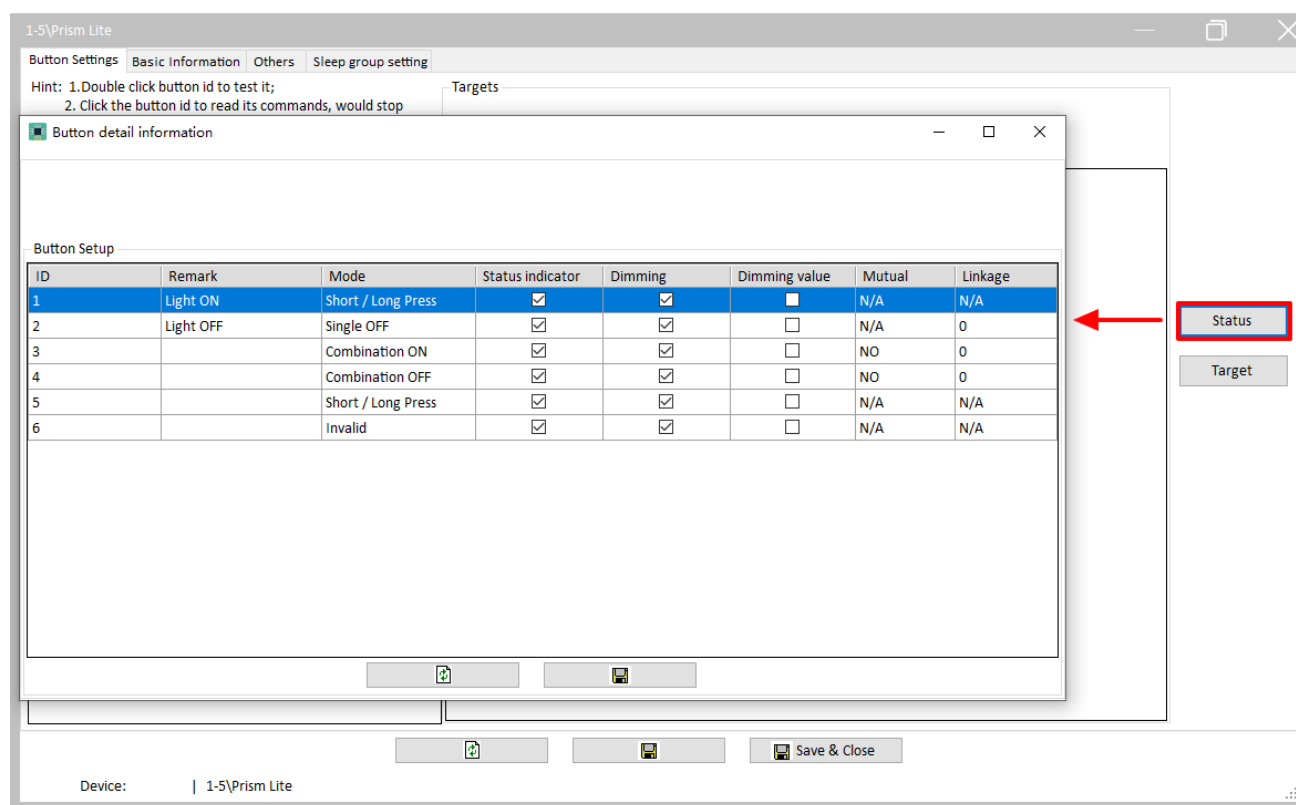


Figure 3-2 Button status setting

### 3.3 Target Setting

Select the button for target configuration on the left, and click “Target” button on the right to open “Target” window, as shown in Figure 3-3.

#### Notice:

The number of the target depends on the button mode, Only one target is supported except “Combination ON”, “Combination OFF”, “Combination ON/OFF”, “Double click/combined”, “Short/long press”, “Short press/long jog”.

1-5\Prism Lite

Basic information

Subnet ID: 1 Device ID: 5 Name: Prism Lite

Current selected button: 1

Short press Long Press

Button type: Short / Long Press Button name: Light ON

Targets

Input target number(1-49) From 1 To 1

Read Save Targets create

Index	Subnet ID	Device ID	Type	Param1	Param2	Param3	Param4
1	1	7	Curtain Switch	0	Open	N/A	N/A

Invalid  
Scene  
Sequence  
Timer Switch  
Universal Switch  
Single Channel Control  
Curtain Switch  
GPRS Control  
Panel Control  
Broadcast Scene  
Broadcast Channel  
Security Module  
Music Control  
Universal Control  
Infrared Control  
Logic Light Adjust

Figure 3-3 Button target configuration

If the button supports two or more targets, users can add targets. This part takes “adding two more targets to the long press mode of Button 1” as an example.

1. Set the mode of Button 1 to “Short/Long press” on the left of button configuration page.
2. Select Button 1, and click “Target” to open target configuration window.
3. Select “Long Press” in button status type (Mark ② of Figure 3-3).
4. The total target number will be 3 if 2 more targets is to be added as there’s 1 target by default. Thus, enter “from 1 to 3” in “Input target number”, and click “Read” button.
5. Then there will be 3 targets in the target list below.
6. Click the target in target list, and edit its Subnet ID, Device ID, Type, and other parameters (according to the selection of Type). Click “Save” to save changes.

#### Notice: About “Target Creation”

“Target Creation” provides a more convenient way to add target(s) to the button. Its function is similar to creating scenes and add it to the button in order for the button to control the targets.

The following ways can be followed to enter “Target Creation”:

- ① Click “Targets” → “Targets Templates” in the main page of Buspro Setup Tool 2.
- ② Click “Button Settings” → “Targets” → “Targets create”.

The following 4 areas are included in this page, as shown in Figure 3-4:

- ① Device list: includes the devices that have been searched in Buspro Setup Tool.
- ② Device button list: shows the buttons of the device, and device can be selected above.
- ③ Template list
- ④ Template target list: includes the targets of current template.

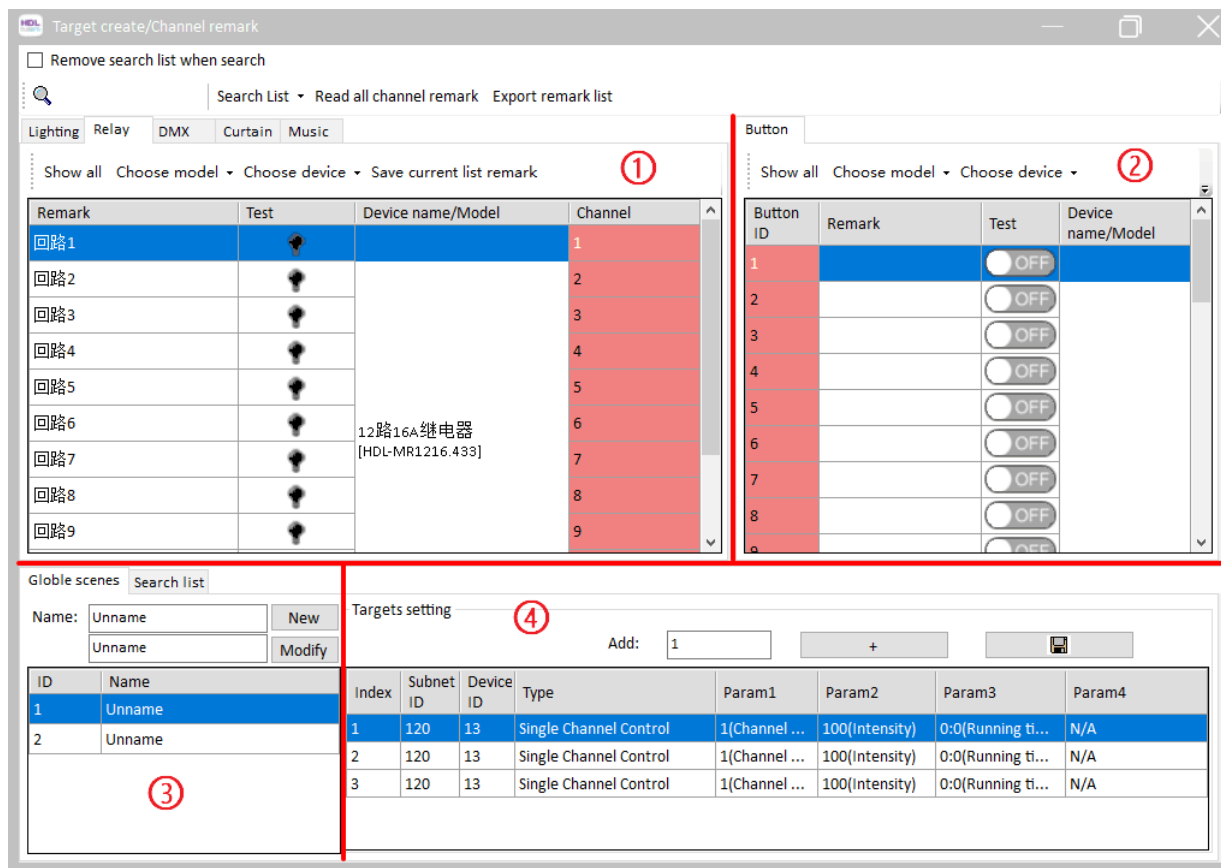


Figure 3-4 Target creation

To edit template, select the template in ③ and edit in ④. “Template” is only for saving the targets temporarily in order for editing and is not assigned to any button. User may add the target to the button in the following 2 ways:

- ① Drag the device in ① (red part) to corresponding button in ② (red part).
- ② Select the targets in ④ (multi-selection with Shift/Ctrl supported), right click and select “Copy selected row”. Return to Button Target Configuration Page (Figure 3-3) and right click on target list and select “Paste”, then click “Save”.

## 4 Button Status Color Setting

Click “Others” in configuration page, as shown in Figure 4-1. Color Setting includes the following 2 setting options:

- ① Button status color setting
- ② White balance adjust

The screenshot shows the '1-5\Prism Lite' configuration window. The 'Others' tab is selected, displaying two main sections: 'Button status color setting' and 'White balance adjust'.

**Button status color setting**

ID	On Color	Off Color	Sensitivity
1			60
2			75
3			65
4			70
5			65
6			75

**White balance adjust**

ID	R	G	B
1	100	100	100
2	100	100	100
3	100	100	100
4	100	100	100
5	100	100	100
6	100	100	100

At the bottom, there are three buttons: a refresh icon, a save icon, and a 'Save & Close' button. The 'Device:' field shows '1-5\Prism Lite'.

Figure 4-1 Color setting

## **4.1 Button Status Color Setting**

One button may be set with different color according to its status. On color, off color and sensitivity are included in this setting area:

1. On color: the indicator color when the target is on
2. Off color: the indicator color when the target is off
3. Sensitivity: to set the button sensitivity (it is recommended to keep the value by default).

## **4.2 White Balance Adjustment**

If the indicator color is not accurate, please set the button indicator color to white in “Button status color setting”, and edit the RGB value (from 0 to 100) in “White Balance Adjustment” to adjust white color, in order for correcting indicator color.

## 5 Sleep Group Setting

This panel has two status: Sleep and Standby

- Sleep: triggered by command, and the panel will enter sleep mode (similar to pressing the power button for the mobile phone to enter sleep mode)
- Standby: in a set period of time after last operation, the system enters standby mode automatically (similar to the mobile phone entering standby mode with no operation for a short period of time)

“Sleep Group” refers to the following situation: if one panel is woke up from sleep/standby mode, other panels in the same sleep group will be woke up as well. Through configuration, one panel can send command for all the panels in the same sleep group to enter sleep mode. Despite that the standby status of the panels in the same sleep group stays independent.

Click “Sleep Group Setting” in configuration page, as shown in Figure 5-1.

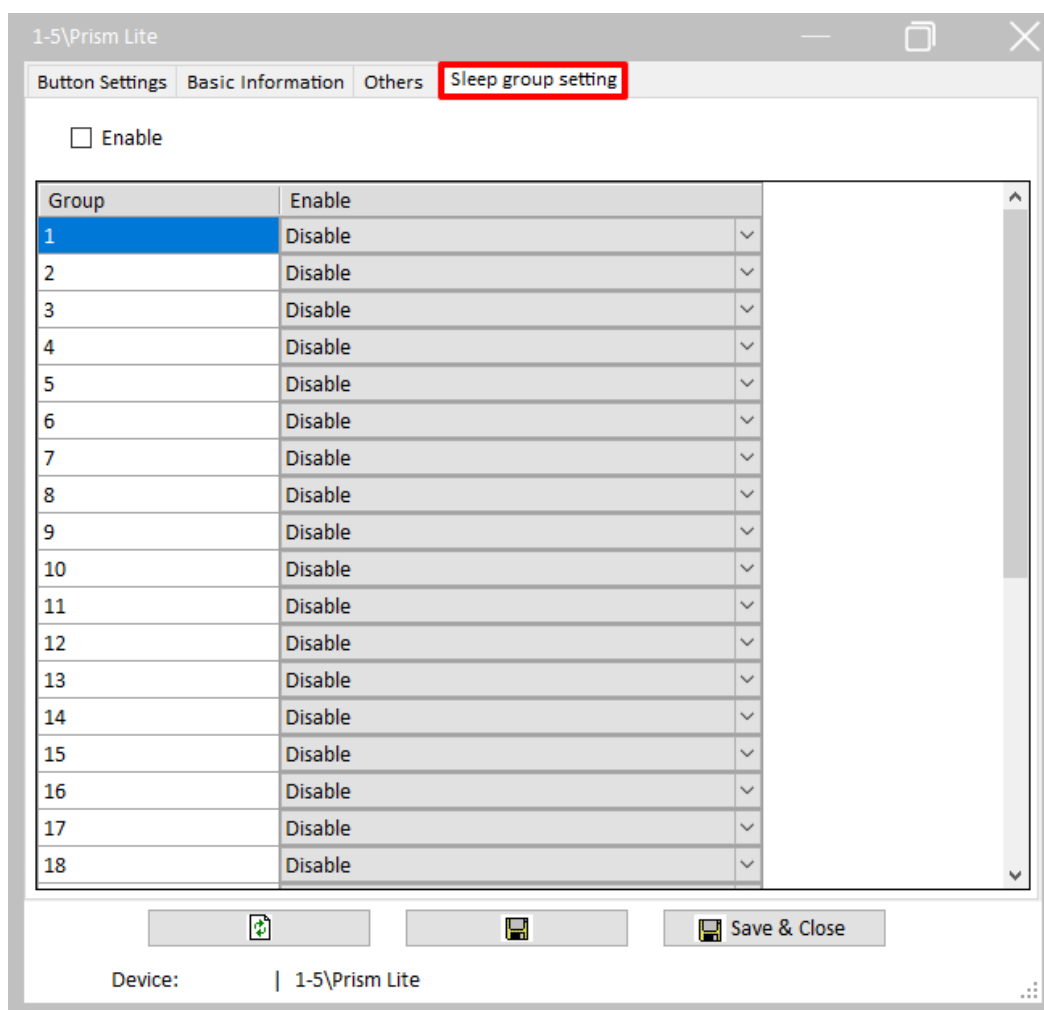


Figure 5-1 Sleep group configuration

Check “Enable” to enable the sleep group function of the panel, otherwise the panel stays independent in the system and its sleep status does not affect other panels.

Add the panel to the corresponding sleep group by selecting “Enable”. The system has 32 sleep groups by default. Select “Enable” to add the panel to the corresponding sleep group, and when the panel is woke up, other panels in the sleep group will also be waken up.